

# DIAMOND H SUBDIVISION 1st AMENDMENT

PART OF THE NORTHEAST QUARTER OF SECTION 22, T.7N., R.2W., SLB&M, U.S. SURVEY  
WEBER COUNTY, UTAH  
MAY, 2016



**NARRATIVE**  
(NO SCALE)

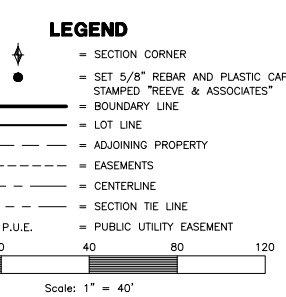
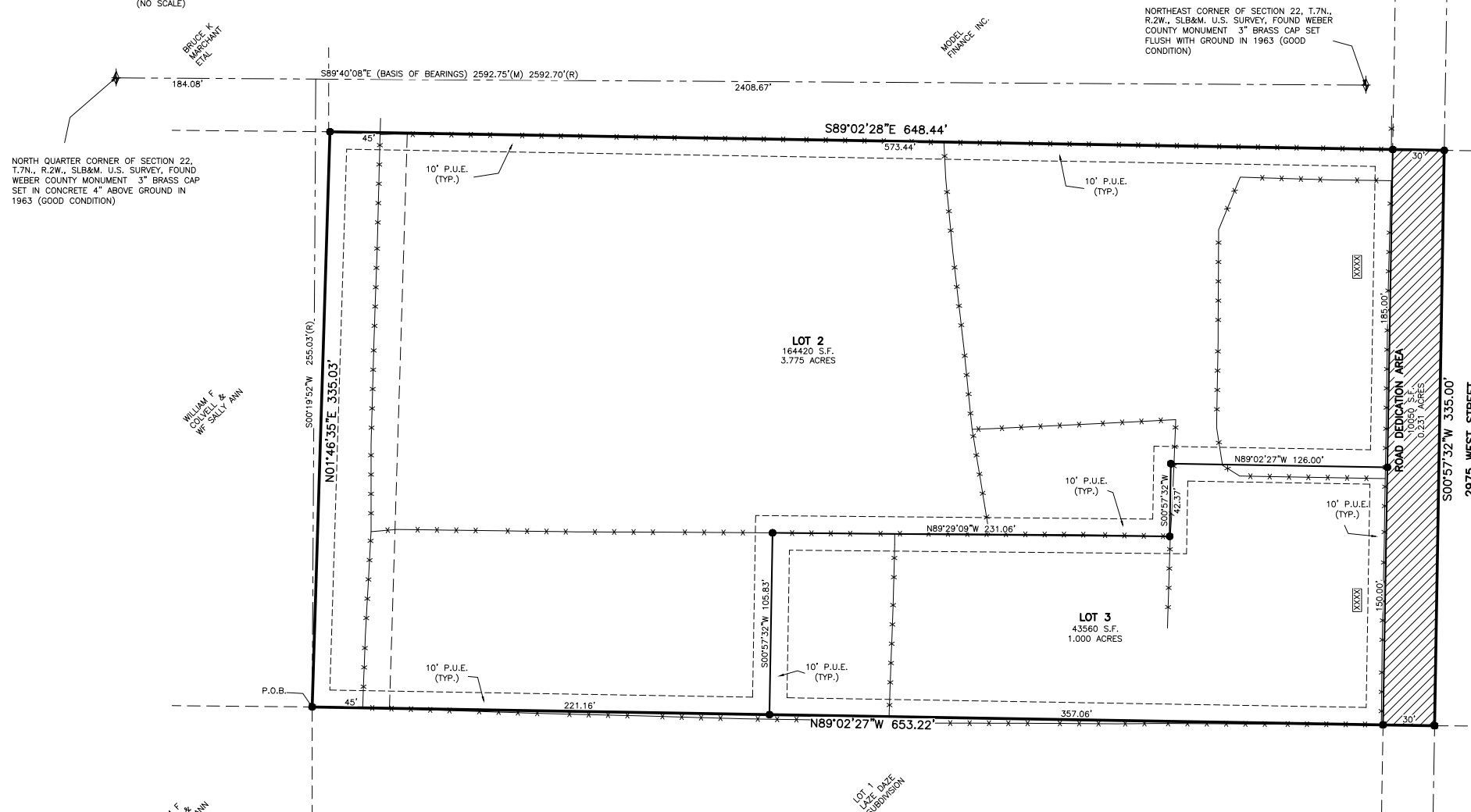
A north arrow, scale, and date.

Contour map with, unless specified otherwise by the county engineer, two-foot contour intervals.

The existing location, widths and other dimensions of all existing or platted streets and other important features such as, but not limited to, railroad lines, sanitary sewers, storm drains, water supply mains, fire hydrants, water wells, land drains, culverts, watercourses, wetlands, stream corridor setbacks, floodplain, fence lines or other lines of occupation, exceptional topography, easements and buildings and structures within and immediately adjacent (within 30 feet) to the tract of land to be subdivided.

The location, widths and other dimensions of proposed public streets, private streets, or private access rights-of-way, alleys, utility easements, pathways, parks, other open spaces and lots with proper labeling of spaces to be dedicated to the public or designated as private streets or private access rights-of-way.

The location of percolation test holes on each lot.



**NARRATIVE**

THE PURPOSE OF THIS PLAT IS TO DIVIDE THIS PROPERTY INTO LOTS AND STREETS. ALL BOUNDARY CORNERS AND REAR LOT CORNERS WERE SET WITH A 5/8" REBAR AND PLASTIC CAP STAMPED "REEVE & ASSOCIATES". ALL FRONT LOT CORNERS WERE SET WITH A LEAD PLUG IN THE TOP BACK OF CURB AT THE EXTENSION OF THE SIDE LOT LINES.

**BASIS OF BEARINGS**

THE BASIS OF BEARINGS FOR THIS PLAT IS THE SECTION LINE BETWEEN THE NORTH QUARTER CORNER AND THE NORTHEAST CORNER OF SECTION 22, TOWNSHIP 7 NORTH, RANGE 2 WEST, SALT LAKE BASE AND MERIDIAN, U.S. SURVEY, SHOWN HEREON AS S89°40'08"E

**DEVELOPER INFO.**

TOM HADLEY  
3973 N. 2975 W.  
OGDEN, UTAH  
84404

**BOUNDARY DESCRIPTION**

ALL OF LOT 1, OF DIAMOND H SUBDIVISION, IN THE OFFICE OF THE WEBER COUNTY RECORDER. MORE PARTICULARLY DESCRIBED AS FOLLOWS.

PART OF THE NORTHEAST QUARTER OF SECTION 22, TOWNSHIP 7 NORTH, RANGE 2 WEST, SALT LAKE BASE AND MERIDIAN, U.S. SURVEY, DESCRIBED AS FOLLOWS:  
BEGINNING AT A POINT ON THE CENTERLINE OF A DITCH, SAID POINT BEING S89°40'08"E ALONG THE SECTION LINE 184.08 FEET AND S00°19'52"W 840.25 FEET FROM THE NORTH QUARTER CORNER OF SAID SECTION 22; THENCE N01°46'35"E ALONG SAID CENTERLINE 335.03 FEET; THENCE S89°02'28"E 648.44 FEET; THENCE S00°57'32"W 335.00 FEET TO THE NORTH BOUNDARY OF LAZE DAZE SUBDIVISION; THENCE N89°02'27"W ALONG SAID NORTH BOUNDARY 653.22 FEET TO THE POINT OF BEGINNING.  
CONTAINING 218,027 SQUARE FEET OR 5.005 ACRES, MORE OR LESS

**WEBER COUNTY PLANNING COMMISSION APPROVAL**

THIS IS TO CERTIFY THAT THIS SUBDIVISION PLAT WAS DULY APPROVED BY THE WEBER COUNTY PLANNING COMMISSION.  
SIGNED THIS \_\_\_\_\_ DAY OF \_\_\_\_\_, 20\_\_\_\_.

\_\_\_\_\_  
CHAIRMAN, WEBER COUNTY PLANNING COMMISSION

**WEBER COUNTY ENGINEER**

I HEREBY CERTIFY THAT THE REQUIRED PUBLIC IMPROVEMENT STANDARDS AND DRAWINGS FOR THIS SUBDIVISION CONFORM WITH THE COUNTY STANDARDS AND THE AMOUNT OF THE FINANCIAL GUARANTEE IS SUFFICIENT FOR THE INSTALLATION OF THESE IMPROVEMENTS.

\_\_\_\_\_  
WEBER COUNTY ENGINEER

**WEBER COUNTY COMMISSION ACCEPTANCE**

THIS IS TO CERTIFY THAT THIS SUBDIVISION PLAT, THE DEDICATION OF STREETS AND OTHER PUBLIC WAYS AND FINANCIAL GUARANTEE OF PUBLIC IMPROVEMENTS ASSOCIATED WITH THIS SUBDIVISION, THEREON ARE HEREBY APPROVED AND ACCEPTED BY THE COMMISSIONERS OF WEBER COUNTY, UTAH.

SIGNED THIS \_\_\_\_\_ DAY OF \_\_\_\_\_, 20\_\_\_\_.

\_\_\_\_\_  
CHAIRMAN, WEBER COUNTY COMMISSION

ATTEST \_\_\_\_\_ TITLE \_\_\_\_\_

**WEBER COUNTY SURVEYOR**

I HEREBY CERTIFY THAT THE WEBER COUNTY SURVEYOR'S OFFICE HAS REVIEWED THIS PLAT FOR MATHEMATICAL CORRECTNESS, SECTION CORNER DATA, AND FOR HARMONY WITH LINES AND MONUMENTS ON RECORD IN COUNTY OFFICES. THE APPROVAL OF THIS PLAT BY THE WEBER COUNTY SURVEYOR DOES NOT RELIEVE THE LICENSED LAND SURVEYOR WHO EXECUTED THIS PLAT FROM THE RESPONSIBILITIES AND/OR LIABILITIES ASSOCIATED THEREWITH.

SIGNED THIS \_\_\_\_\_ DAY OF \_\_\_\_\_, 20\_\_\_\_.

\_\_\_\_\_  
WEBER COUNTY SURVEYOR

**WEBER COUNTY ATTORNEY**

I HAVE EXAMINED THE FINANCIAL GUARANTEE AND OTHER DOCUMENTS ASSOCIATED WITH THIS SUBDIVISION PLAT, AND IN MY OPINION THEY CONFORM WITH THE COUNTY ORDINANCE APPLICABLE THERETO AND NOW IN FORCE AND EFFECT.

SIGNED THIS \_\_\_\_\_ DAY OF \_\_\_\_\_, 20\_\_\_\_.

\_\_\_\_\_  
WEBER COUNTY ATTORNEY

**Weber County Recorder**

Entry No. \_\_\_\_\_ Fee Paid \_\_\_\_\_  
And Recorded, \_\_\_\_\_  
At \_\_\_\_\_ In Book \_\_\_\_\_  
Of The Official Records, Page \_\_\_\_\_  
Recorded For: \_\_\_\_\_  
Weber County Recorder \_\_\_\_\_  
Deputy \_\_\_\_\_

**SURVEYOR'S CERTIFICATE**

I, **TREVOR J. HATCH**, DO HEREBY CERTIFY THAT I AM A REGISTERED PROFESSIONAL LAND SURVEYOR IN THE STATE OF UTAH IN ACCORDANCE WITH TITLE 58, CHAPTER 22, PROFESSIONAL ENGINEERS AND LAND SURVEYORS ACT; AND THAT I HAVE COMPLETED A SURVEY OF THE PROPERTY DESCRIBED ON THIS PLAT IN ACCORDANCE WITH SECTION 17-23-17 AND HAVE VERIFIED ALL MEASUREMENTS, AND HAVE PLACED MONUMENTS AS REPRESENTED ON THIS PLAT, AND THAT THIS PLAT OF **DIAMOND H SUBDIVISION** IN **WEBER COUNTY**, UTAH, HAS BEEN DRAWN CORRECTLY TO THE DESIGNATED SCALE AND IS A TRUE AND CORRECT REPRESENTATION OF THE HEREIN DESCRIBED LANDS INCLUDED IN SAID SUBDIVISION, BASED UPON DATA COMPILED FROM RECORDS IN THE **WEBER COUNTY** RECORDER'S OFFICE AND FROM SAID SURVEY MADE BY ME ON THE GROUND. I FURTHER CERTIFY THAT THE REQUIREMENTS OF ALL APPLICABLE STATUTES AND ORDINANCES OF **WEBER COUNTY** CONCERNING ZONING REQUIREMENTS REGARDING LOT MEASUREMENTS HAVE BEEN COMPLIED WITH.

SIGNED THIS \_\_\_\_\_ DAY OF \_\_\_\_\_, 20\_\_\_\_.

9031945  
UTAH LICENSE NUMBER **TREVOR J. HATCH**

PROFESSIONAL LAND SURVEYOR  
9031945  
TREVOR J. HATCH  
STATE OF UTAH

**OWNERS DEDICATION AND CERTIFICATION**

WE THE UNDERSIGNED OWNERS OF THE HEREIN DESCRIBED TRACT OF LAND, DO HEREBY SET APART AND SUBDIVIDE THE SAME INTO LOTS AND STREETS AS SHOWN ON THE PLAT AND NAME SAID TRACT **DIAMOND H SUBDIVISION**, AND DO HEREBY DEDICATE TO PUBLIC USE ALL THOSE PARTS OR PORTIONS OF SAID TRACT OF LAND DESIGNATED AS STREETS, THE SAME TO BE USED AS PUBLIC THOROUGHFARES AND ALSO TO GRANT AND DEDICATE A PERPETUAL RIGHT AND EASEMENT OVER, UPON AND UNDER THE LANDS DESIGNATED HEREON AS PUBLIC UTILITY, STORM WATER DETENTION PONDS DRAINAGE EASEMENTS AND CANAL MAINTENANCE EASEMENT, THE SAME TO BE USED FOR THE INSTALLATION MAINTENANCE AND OPERATION OF PUBLIC UTILITY SERVICE LINE, STORM DRAINAGE FACILITIES, IRRIGATION CANALS OR FOR THE PERPETUAL PRESERVATION OF WATER CHANNELS IN THEIR NATURAL STATE WHICHEVER IS APPLICABLE AS MAY BE AUTHORIZED BY THE GOVERNING AUTHORITY, WITH NO BUILDINGS OR STRUCTURES BEING ERRECTED WITHIN SUCH EASEMENTS AND TO HEREBY GRANT TO THE OWNERS OF LOT 34, THEIR HEIRS AND ASSIGNS, AND PERPETUITY, A 20 FOOT ACCESS EASEMENT AS SHOWN HEREON, SAID DRIVE ACCESS TO BE MAINTAINED BY THE OWNER OF LOT 34.

SIGNED THIS \_\_\_\_\_ DAY OF \_\_\_\_\_, 20\_\_\_\_.

\_\_\_\_\_  
TOM HADLEY

**ACKNOWLEDGMENT**

STATE OF UTAH )ss.  
COUNTY OF \_\_\_\_\_ )

ON THE \_\_\_\_\_ DAY OF \_\_\_\_\_, 20\_\_\_\_, PERSONALLY APPEARED BEFORE ME, THE UNDERSIGNED NOTARY PUBLIC, \_\_\_\_\_ (AND) \_\_\_\_\_ SIGNER(S) OF THE ABOVE OWNER'S DEDICATION AND CERTIFICATION, WHO BEING BY ME DULY SWORN, DID ACKNOWLEDGE TO ME \_\_\_\_\_ SIGNED IT FREELY, VOLUNTARILY, AND FOR THE PURPOSES THEREIN MENTIONED.

\_\_\_\_\_  
COMMISSION EXPIRES \_\_\_\_\_ NOTARY PUBLIC

**ACKNOWLEDGMENT**

STATE OF UTAH )ss.  
COUNTY OF \_\_\_\_\_ )

ON THE \_\_\_\_\_ DAY OF \_\_\_\_\_, 20\_\_\_\_, PERSONALLY APPEARED BEFORE ME, THE UNDERSIGNED NOTARY PUBLIC, \_\_\_\_\_ (AND) \_\_\_\_\_ BEING BY ME DULY SWORN, ACKNOWLEDGED TO ME THEY ARE \_\_\_\_\_ AND \_\_\_\_\_ OF SAID CORPORATION AND THAT THEY SIGNED THE ABOVE OWNER'S DEDICATION AND CERTIFICATION FREELY, VOLUNTARILY, AND IN BEHALF OF SAID CORPORATION FOR THE PURPOSES THEREIN MENTIONED.

\_\_\_\_\_  
COMMISSION EXPIRES \_\_\_\_\_ NOTARY PUBLIC

**Project Info.**

Surveyor: **T. HATCH**  
Designer: **D. CAVE**  
Begin Date: **5-3-2016**  
Name: **DIAMOND H SUBDIVISION**  
Number: **6725-01**  
Revision: \_\_\_\_\_  
Scale: **1"=40'**  
Checked: \_\_\_\_\_

**RA**  
**Reeve & Associates, Inc.**  
5160 SOUTH 1500 WEST, RIVERDALE, UTAH, 84405  
TEL: (801) 621-3100 FAX: (801) 621-2666 www.reeve-asso.com