

Easement vacation for Charles Adams

Allen Estates Phase 2, Lot 27

PARCEL NUMBER: 154290012

Vacate 10 foot PUBLIC UTILITY & DRAINAGE EASEMENT on **east** side of property

(S21 deg. 56' 39" E)

Vacate PUBLIC UTILITY & DRAINAGE EASEMENT on **south** side of property

(S70 deg. 50' 18" W)

Vacate PUBLIC UTILITY & DRAINAGE EASEMENT on **west** side of property

(S 28 deg. 24' 29" E)

SEE EXHIBIT A

EXHIBIT A

PART OF THE NE.1/4, OF SECTION 28, T.6N., R.2W., S.L.B. & M. ALLEN ESTATES SUBDIVISION PHASE 2

429

TAXING UNIT: 377

IN WEBER COUNTY

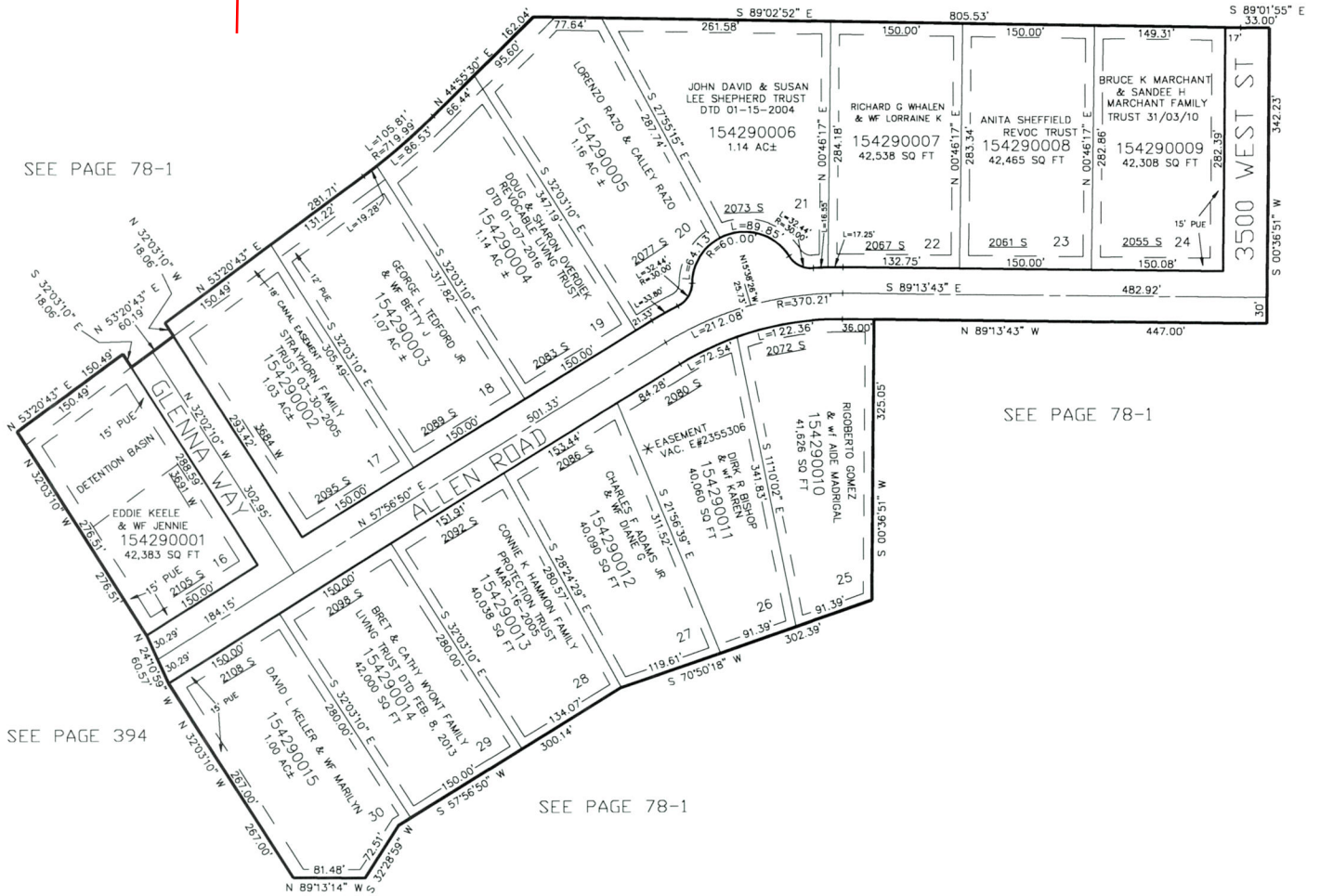
SCALE 1" = 100'



SEE PAGE 78-1

SEE PAGE 78-1

SEE PAGE 78-1



SEE PAGE 394

SEE PAGE 78-1

10' UTILITY & DRAINAGE EASEMENTS EACH SIDE OF PROPERTY LINES AS INDICATED BY DASHED LINES EXCEPT AS OTHERWISE SHOWN.

FOR COMPLETE ENG DATA SEE ORIGINAL DEDICATION PLAT IN BOOK 64, PAGE 86 OF RECORDS.