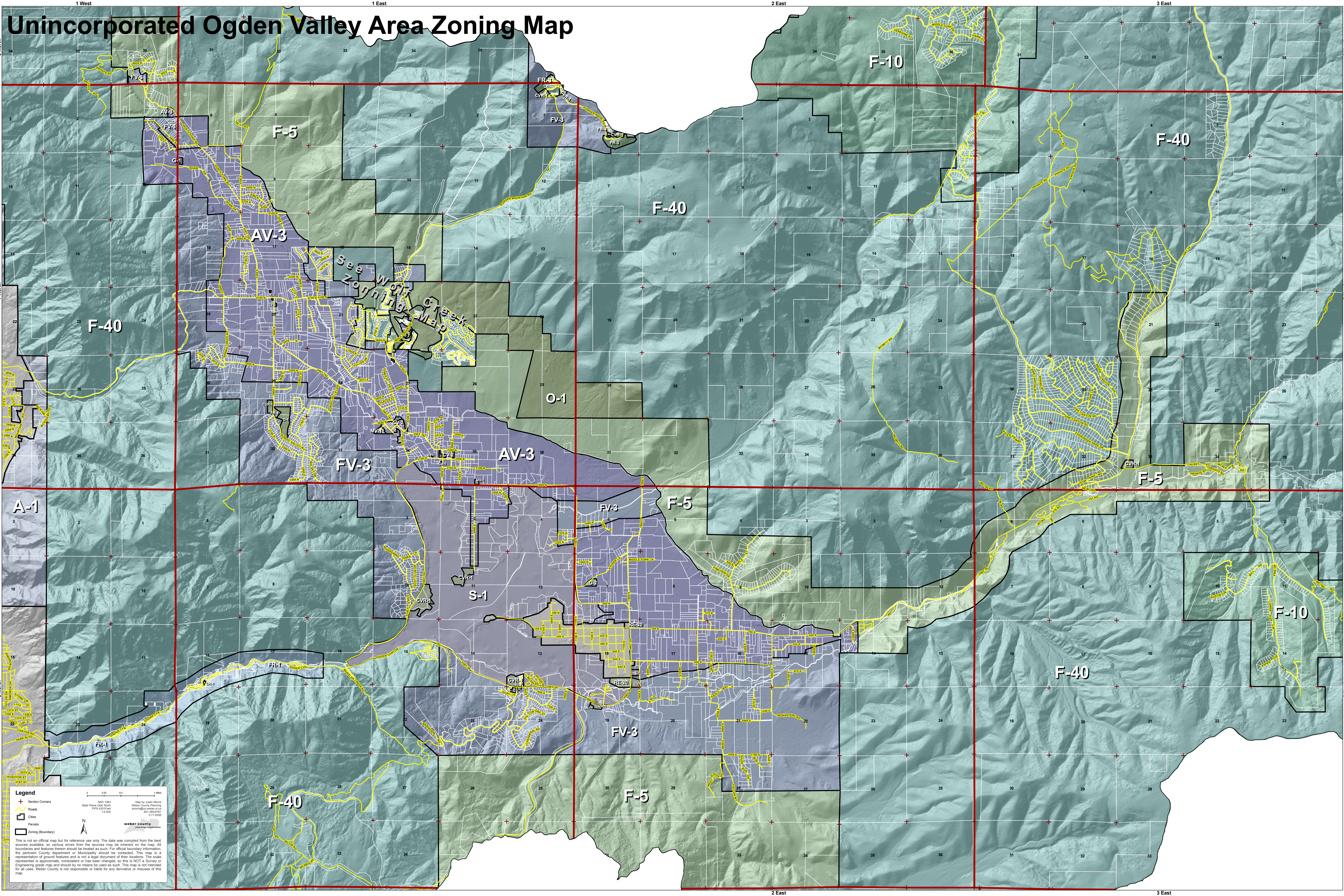


Unincorporated Ogden Valley Area Zoning Map



Legend

- Section Corners
- Roads
- Cities
- Parcels
- Zoning (Boundary)

Scale: 0 0.25 0.5 1 Miles

NAD 1983
State Plane Utah North
FIPS 4301 feet
15,000

Map by Justin Morris
Weber County Planning
jmorris@weber.net
435-298-8751
3-17-2008

weber county
planning department

This is not an official map but for reference use only. The data was compiled from the best sources available, so various errors from the sources may be inherent on the map. All boundaries and features therein should be treated as such. For official boundary information, the pertinent County, department, or Municipality should be contacted. This map is a representation of ground features and is not a legal document of their locations. The scale represented is approximate, regardless of how been changed, so this is NOT a Survey or Engineering grade map and should by no means be used as such. This map is not intended for all uses. Weber County is not responsible or liable for any derivative or misuses of this map.