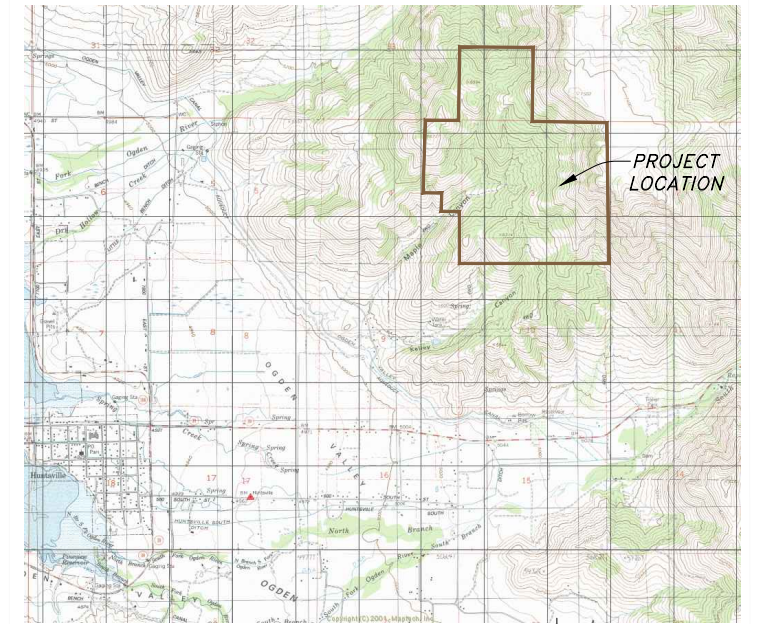


Preliminary Plat For
THE SANCTUARY NORTH
 HUNTSVILLE, WEBER COUNTY, UTAH



VICINITY MAP
 NOT TO SCALE

LEGEND:

- 50' Private Roadway
- 50' Private Driveway Easement
- Exist. 12' wide Green Hills Loop Trail
- Exist. Trail or Road
- Winter Habitat Protected Trail (Motorized Vehicles Prohibited from Jan. 1st to Apr. 7th)
- Proposed 12' wide Equestrian/Nordic Trail
- Future 50' Private Road
- Minimum Building Envelope (75'x100')
- Limited Building Area (Less than 25% slope)
- Future Building Area (Less than 25% slope)
- Building Setbacks: Front = 75' min. Side = 40' min. Rear = 30' min.
- Well Site & 100' Radius Protection Zone
- Septic Site
- Check Dam
- Conservation Easement Area

PROPOSED LOT LAYOUT SUBJECT TO PLANNING APPROVAL

NOTE:
 NO SNOWMOBILE OR SINGLE SEAT
 ATV ALLOWED ON ANY TRAILS

HANSEN & ASSOCIATES, INC.
 Consulting Engineers and Land Surveyors
 538 North Main Brigham City, Utah 84302
 67 East 100 North Logan, Utah 84321
 Brigham City Logan
 (435) 723-3491 Ogden (435) 752-9197
 (435) 723-7663 (801) 399-4905 (435) 752-8272

