

Vaquero Village

What type of native grasses are you proposing in the open spaces?

50% of the landscaping must be in turf grass. It is recommended that the open space is not seeded with native grasses. There should be a mixture of flower beds, trees, turf grass and drought resistant plants in order to meet the requirements of 108-1-4(3).

the landscape plan shows 28 autumn blazes. Please add two more trees.

Plant Table

Quantity	Symbol	Scientific Name	Common Name	Planting Size
30	(+)	Acer freemanii 'Jeffersred'	Autumn Blaze Maple	2" cal.
20	(⊗)	Malus 'Prairie Fire'	Prairie Fire Crabapple	2" cal.
14	(⊙)	Pinus nigra	Austrian Pine	8"-12" B&B

Seed with native grasses.

IRRIGATION NOTES: All irrigation shall be provided by a private secondary water system. Use PVC lateral lines between trees. Connect to lateral lines with Netofim techline tubing, as shown in detail on Sheet L2.

Irrigation Schedule

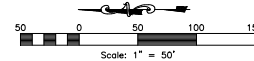
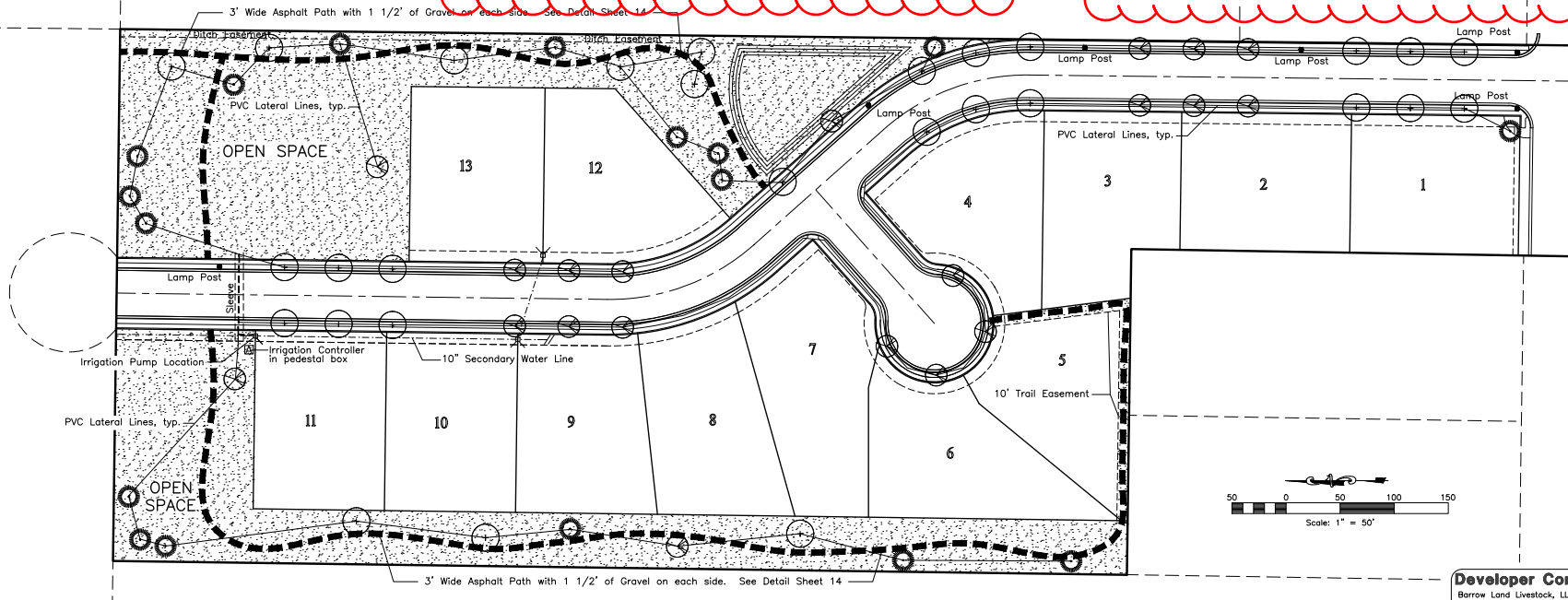
LATERAL LINE - CLASS 200 PVC, SIZED AS FOLLOWS
 3/4" (0-10 gpm), 1" (10-16 gpm), 1 1/4" (16-26 gpm),
 1 1/2" (26-35 gpm), 2" (35-55 gpm)
 CAN USE POLY PIPE FOR DRIP IRRIGATION.

RAINBIRD ESP 12 LXME:120 VAC INDOOR/OUTDOOR MOUNT BASE CONTROLLER. MOUNT ON OUTDOOR PEDESTAL.

SLEEVING - SCHEDULE 40 PVC, 2 SIZES GREATER THAN INTERIOR PIPE
 SLEEVING USED WHENEVER IRRIGATION IS PLACED UNDER PAVED AREAS.

1-1/2" MAINLINE - SCHEDULE 40 PVC

Total area of open space=162,637 sq ft
 50% should be in turf grass (81318.5 sq ft)



Developer Contact:

Barrow Land Livestock, LLC
 Dean & Justin Barrow
 6835 W. 900 S.
 Ogden, UT 84404
 (801) 514-8194



REVISIONS	DESCRIPTION
DATE	BY
4-3-17	Revised Comments

Revised: 4-28-17
Vaquero Village Cluster Subdivision Phase 1
 WEBER COUNTY, UTAH
Landscape & Irrigation Plan



Project Info.
 Engineer: NATE REYE
 Drafter: C. KINGSLEY
 Begin Date: 1-4-16
 Name: VAQUERO VILLAGE CLUSTER SUBDIVISION PHASE 1
 Number: 6352-01

Sheet **14**
 13 Sheets

1/4/2016 J. L. L... - Project: 100286023\Vaquero\Vaquero - Landscape.dwg