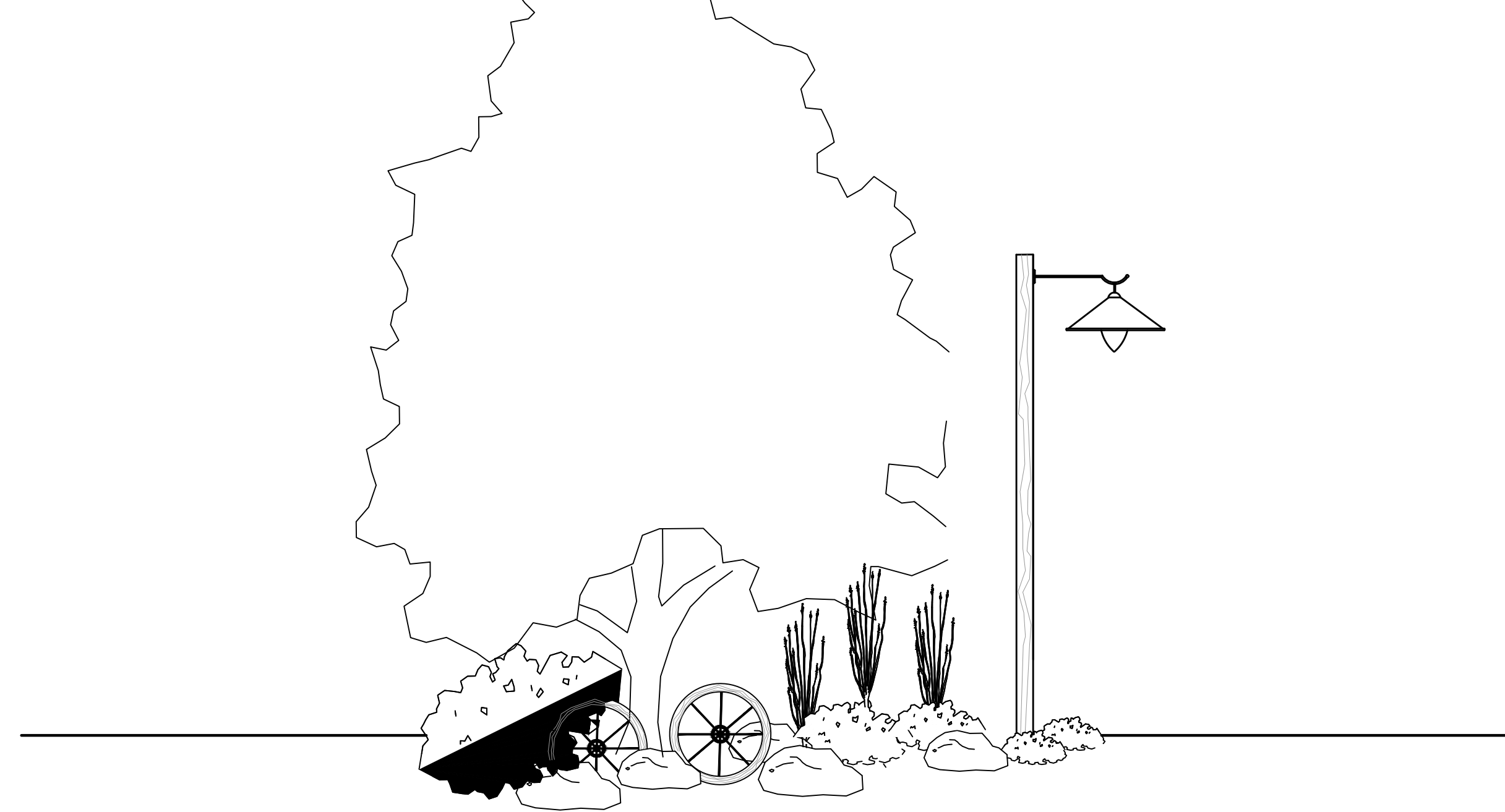


# Vaquero Village



## Plant Table

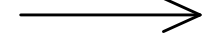

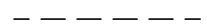

TREES

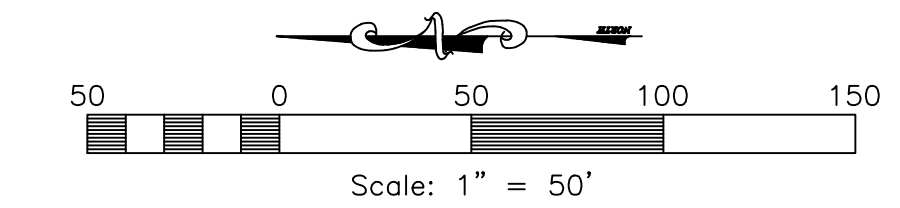
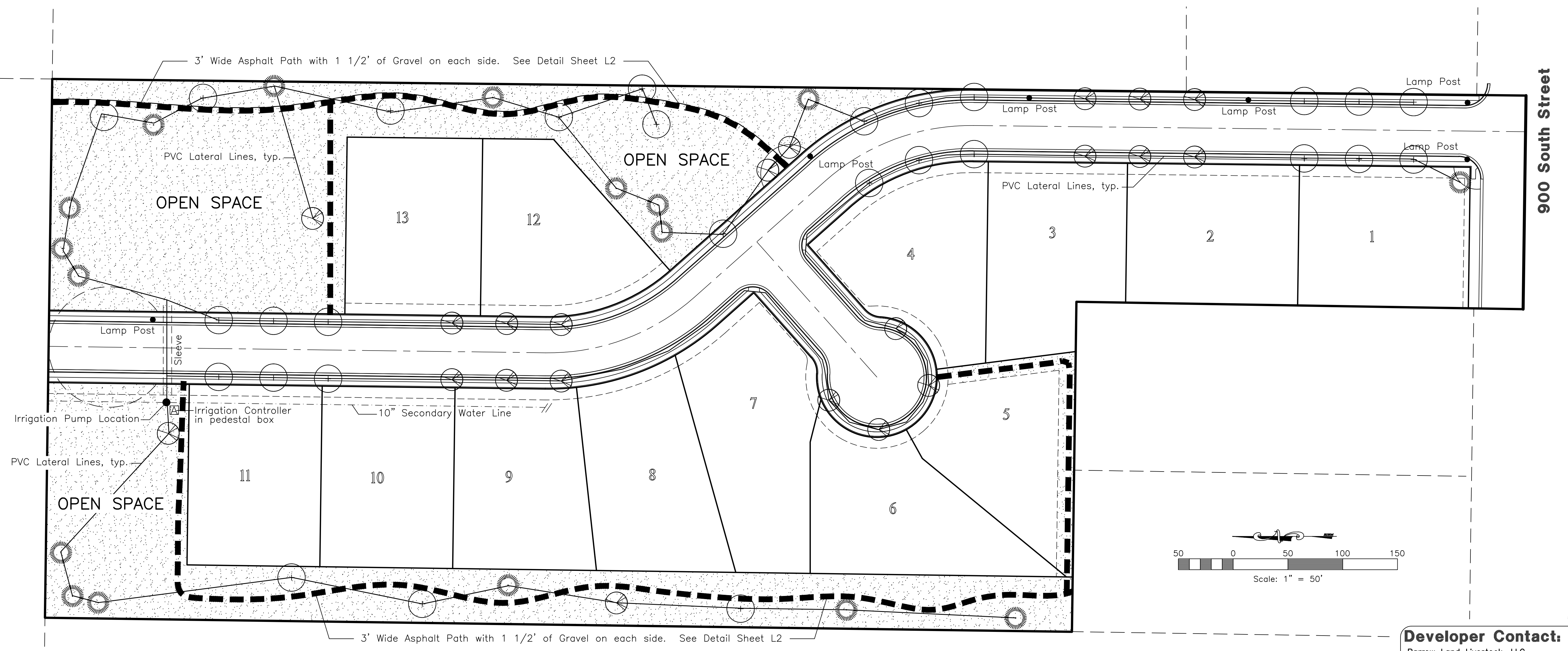
Quantity	Symbol	Scientific Name	Common Name	Planting Size
30	(+)	Acer freemanii 'Jeffersred'	Autumn Blaze Maple	2" cal.
21	(X)	Malus 'Prairie Fire'	Prairie Fire Crabapple	2" cal.
17	(O)	Pinus nigra	Austrian Pine	8'-12' B&B

 Seed with native grasses.

IRRIGATION NOTES: All irrigation shall be provided by a private secondary water system. Use PVC lateral lines between trees. Connect to lateral lines with Netafim techline tubing, as shown in detail on Sheet L2.


## Irrigation Schedule

	LATERAL LINE - CLASS 200 PVC, SIZED AS FOLLOWS 3/4" (0-10 gpm), 1" (10-16 gpm), 1 1/4" (16-26 gpm), 1 1/2" (26-35 gpm), 2" (35-55 gpm)	
	RAINBIRD ESP 12 LXME:120 VAC	INDOOR/OUTDOOR MOUNT BASE CONTROLLER.
	SLEEVEING - SCHEDULE 40 PVC, 2 SIZES GREATER THAN INTERIOR PIPE SLEEVEING USED WHENEVER IRRIGATION IS PLACED UNDER PAVED AREAS.	
	1-1/2" MAINLINE - SCHEDULE 40 PVC	



**Developer Contact:**  
 Barrow Land Livestock, LLC  
 Dean & Justin Barrow  
 6835 W. 900 S  
 Ogden, UT, 84404  
 (801) 514-8194

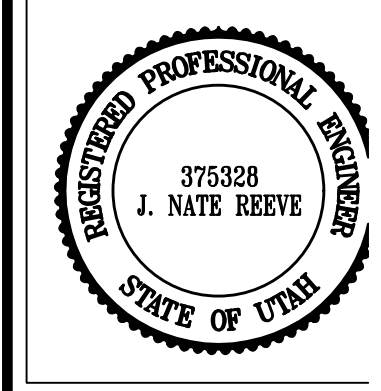
**Reeve & Associates, Inc.**  
 920 CHAMBERS STREET, SUITE 14, OGDEN, UTAH 84403  
 TEL: (801) 827-3100 FAX: (801) 827-8866 WWW.REEVE-ASSOC.COM



REVISIONS	DESCRIPTION

**Vaquero Village**  
 REESE CITY, WEBER COUNTY, UTAH

**Landscape & Irrigation Plan**



**Project Info.**  
 Engineer: J. NATE REEVE  
 Drafter: C. KINGSLEY  
 Begin Date: 4-4-16  
 Name: REESE STATION  
 SUBDIVISION  
 PHASE 1  
 Number: 6352-01

1/4/2016 | dreyolds | c:\6352\01 - Parcel 100360013\landscape\barrow Landscape.dwg