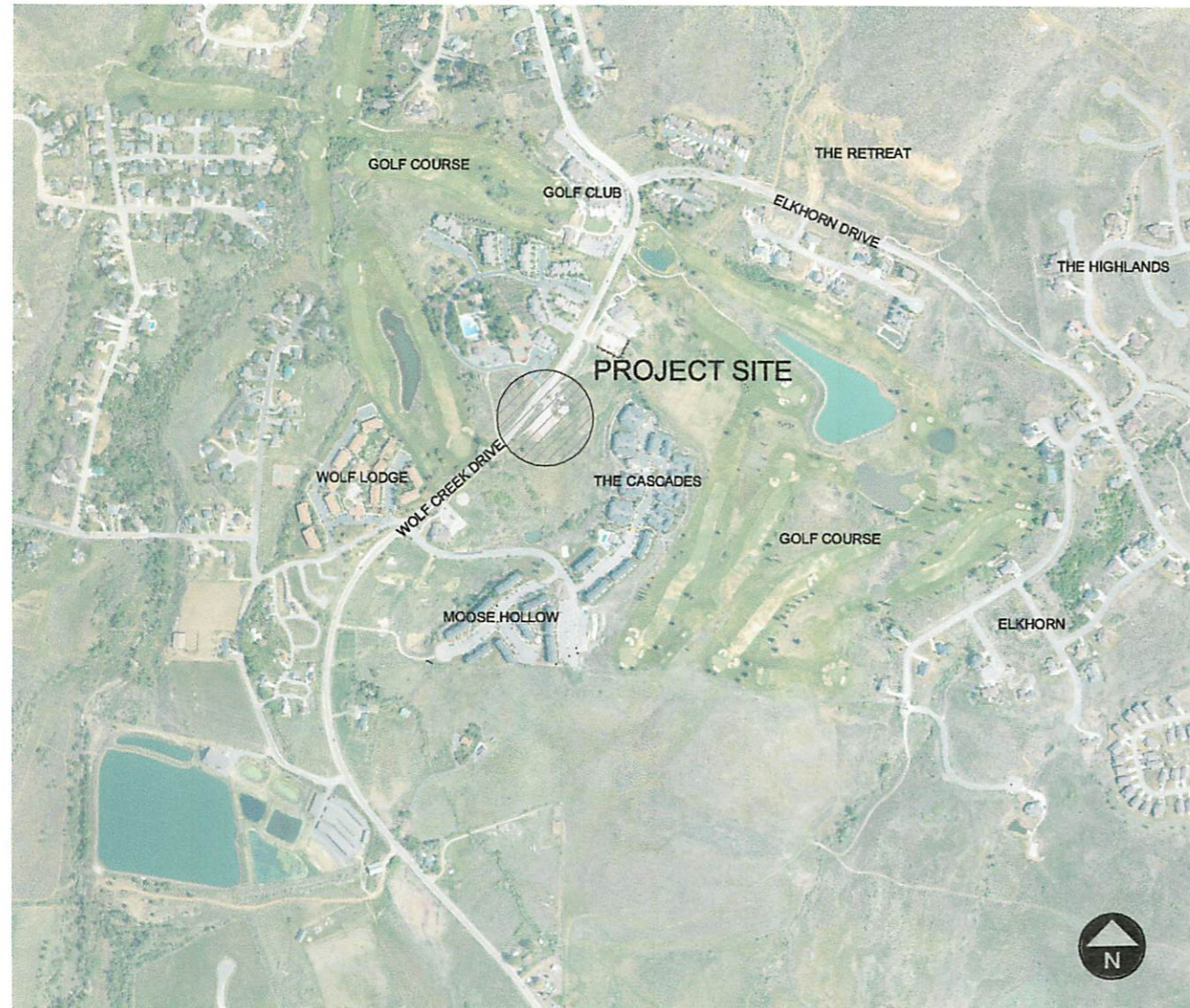


WOLF CREEK RESORT

BASECAMP SITE - DESIGN REVIEW

LOCATION MAP:



PREPARED FOR:

WOLF CREEK RESORT
JOHN LEWIS
ERIC HOUSEHOLDER
EDEN, UTAH 84310
801.745.3737

CONSULTANTS:

LAND PLANNING:
LANGVARDT DESIGN GROUP
ERIC LANGVARDT, LANDSCAPE ARCHITECT
1525 WESTMORELAND DRIVE
SALT LAKE CITY, UTAH 84105
801.583.1295

ARCHITECTURE:
RIDGELINE DESIGN ARCHITECTS
JADE SEWELL
1708 EAST 5550 SOUTH #20
SOUTH OGDEN, UTAH 84403
801.791.0001

SHEET INDEX:

L1.0 COVER SHEET
L1.1 SITE PLAN

WOLF CREEK RESORT
BASECAMP SITE - DESIGN REVIEW
WEBER COUNTY, UTAH

DATE:	MARCH 2016
PROJECT:	000.0000.00
DRAWN BY:	EL
REVIEW BY:	EL
VERSION:	DESIGN REVIEW
REVISIONS:	

SHEET TITLE:
COVER SHEET

SHEET NUMBER:
L1.0

7110
1988

MOORE CREEK BASIN

DESIGN SHEET
MOORE CREEK BASIN

1

7110
1988
SHEET INDEX

MOORE CREEK BASIN
DESIGN SHEET
NO. 1

MOORE CREEK BASIN
DESIGN SHEET
NO. 1

MOORE CREEK BASIN
DESIGN SHEET
NO. 1



MOORE CREEK BASIN
DESIGN SHEET
NO. 1