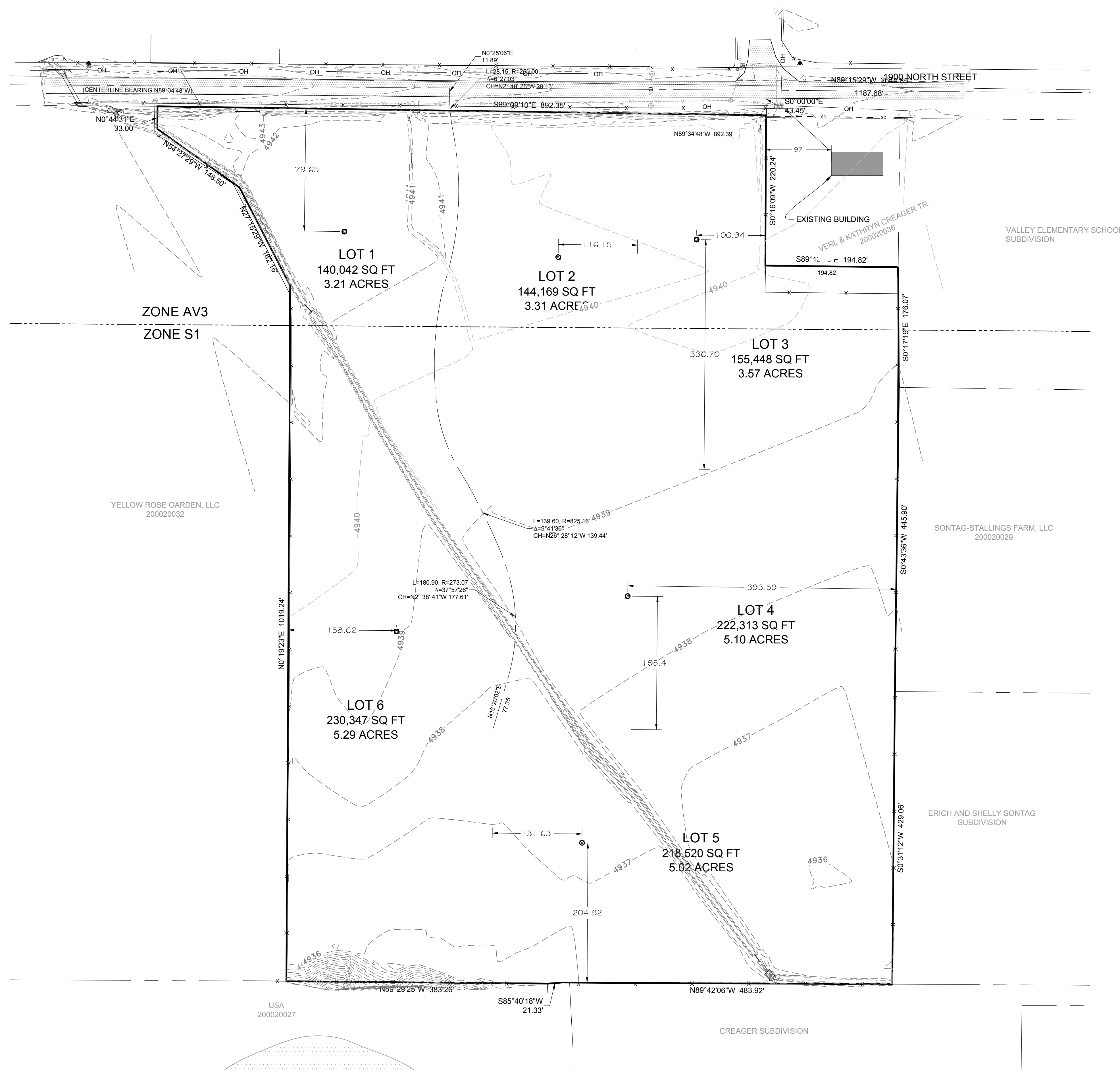


REFLECTIONS SUBDIVISION
 PART OF THE NORTHWEST QUARTER OF SECTION 2,
 TOWNSHIP 6 NORTH, RANGE 1 EAST,
 SALT LAKE BASE AND MERIDIAN
 WEBER COUNTY, UTAH
 APRIL 2016
 EXISTING CONDITIONS PLAN



LEGEND

	WEBER COUNTY MONUMENT AS NOTED
	SET 24"x5/8 REBAR AND CAP MARKED GARDNER ENGINEERING
	PROPERTY LINE
	INTERIOR LOT LINE
	ADJACENT PARCEL
	SECTION LINE
	CENTER LINE
	EXISTING FENCE
	PUBLIC UTILITY AND ACCESS EASEMENT
	EXISTING STORM DRAIN LINE
	EXISTING COMMUNICATION LINE
	EXISTING OVERHEAD POWER LINE
	EXISTING WATER LINE
	EXISTING GAS LINE
	EXISTING ASPHALT

NOTE:
 EXISTING UTILITIES ARE SHOWN FOR THE CONVENIENCE
 OF THE CONTRACTOR ONLY. THE CONTRACTOR IS
 RESPONSIBLE FOR THE PROTECTION OF ALL UTILITIES.
 THE ENGINEER BEARS NO RESPONSIBILITY FOR THE
 UTILITIES NOT SHOWN OR SHOWN INCORRECTLY.

Know what's below. 811
Call 811 before you dig.
BLUE STAKES OF UTAH
 UTILITY NOTIFICATION CENTER, INC.
www.bluestakes.org
 1-800-662-4111

