



Index

- I. Inventory Recommendation Summary
- II. Inventory Recommendation Detail
- III. Overview Photographs
- IV. Satellite Map
- V. Driving Maps
- VI. CAD Site Plan
- VII. Code Research
- VIII. Elevation Overview
- IX. Proposed Recommendations

Inventory Recommendation Summary

Sign No.	INVENTORY		RECOMMENDATION	
	Existing Sign Type	Action	Sign Type	Sign Type Description
E01 ✓	Wall Sign	Remove and Install	Custom	Custom
E02 ✓	Banner	Remove and Install	Wall Sign	
E03 ✓	Banner	Remove and Install	Wall Sign	
E04 ✓	Monument Sign	Remove and Install	Pylon Sign	
E05 ✓	Directional Sign	Remove and Scrap	N/A	
E06 ✓	Directional Sign	Remove and Scrap	N/A	
E07 ✓	Window Vinyl	Remove and Scrap	N/A	
E08	Banner	Leave Sign	N/A	
E09	Banner	Leave Sign	N/A	
E10 ✓	Informational Sign	Remove and Scrap	N/A	
E11	Wall Sign	Remove and Install	Wall Sign	
N01		New Install	Door Vinyl	
N02		New Install	Awning	

Inventory Recommendation Detail

E01

INVENTORY



Sign Text		
SHINE COLLISION REPAIR		
Existing Sign Type		
Wall Sign		
Height	Width	Depth
49"	73"	14 5/8"
Letter Height	OAH Above Grade	
N/A	12'	
Sign Material	Mount	
Aluminum	Flush-Wall	
Face Type	Face Material	
N/A	Plex	
Retainer Type	Retainer Size	
N/A	N/A	
V.O Height	V.O. Width	
N/A	N/A	
Surface Color	Surface Material	
N/A	Aluminum	
Available Height	Available Width	
90"	90"	
Double Faced	Illumination Type	
	Internal	

Comments

RECOMMENDATION



Proposed Action	
Remove and Install	
Proposed Sign Type	
Custom	
Sign ID	
Face replacement	
Description	
Custom	
Signage Text	
gerber COLLISION & GLASS	
Wall Repair	
Replace existing faces, paint cabinet and retainer blue	

Comments

REVIEWED FOR CODE COMPLIANCE

DATE 10/8/15 PR SMurray
CEO

see Addendum - last 3 pages
10/26/15
SMurray

Murray, Stuart

From: Nina Jackson <nina@gilliessigns.com>
Sent: Thursday, October 22, 2015 11:59 AM
To: Murray, Stuart
Subject: Gerber Permit Revision
Attachments: Gerber Ogden Awning.pdf; Gerber Ogden Awning Mounting.pdf

Categories: Red Category

Good Morning Stuart!

Attached is the size and mounting detail for the Gerber awnings. So the revision from the initial permit is as follows:

- EO1 - Face replacement and paint cabinet. Install 3 new awnings.
- EO2 - Remove existing banner and install non-illuminated sign.
- EO3 - Remove existing banner and install non-illuminated sign.

Permit # STR-2015-09-01657. Please let me know if there is anything else you need from me.

Thank you so much!
Ruth Gillies
Gillies Signs
801-554-4333 cell
801-973-4330 office

Inventory Recommendation Detail

E02

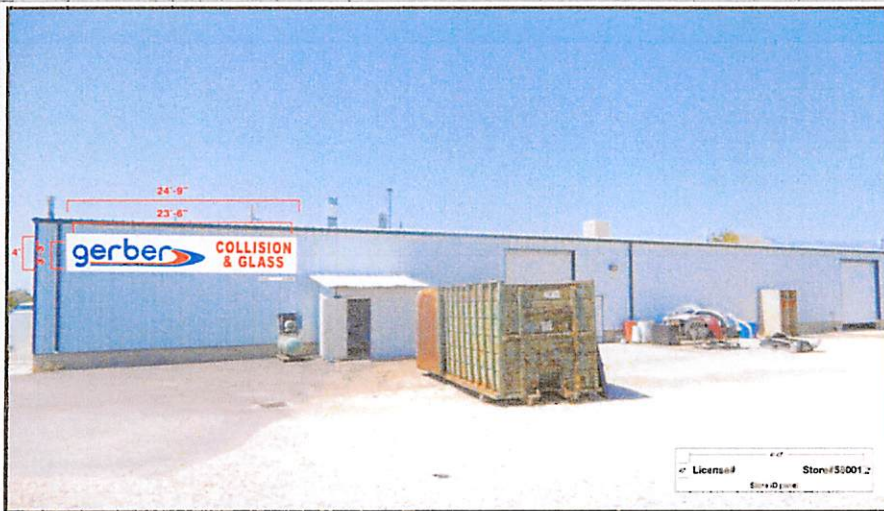
INVENTORY



Sign Text		
SHINE COLLISION REPAIR		
Existing Sign Type		
Banner		
Height	Width	Depth
4' 3"	10'	N/A
Letter Height	OAH Above Grade	
N/A	N/A	
Sign Material	Mount	
Banner Material	Flush-Wall	
Face Type	Face Material	
N/A	Banner Material	
Retainer Type	Retainer Size	
N/A	N/A	
V.O Height	V.O. Width	
N/A	N/A	
Surface Color	Surface Material	
N/A	Aluminum	
Available Height	Available Width	
N/A	150'	
Double Faced	Illumination Type	
	Non-Illuminated	

Comments

RECOMMENDATION



Proposed Action	
Remove and Install	
Proposed Sign Type	
Wall Sign	
Sign ID	
3' 3" X 23' 6" Non-illum wall sign & small license	
Description	
Custom	
Signage Text	
gerber COLLISION & GLASS	
Wall Repair	
Remove banner, seal holes and install new sign	

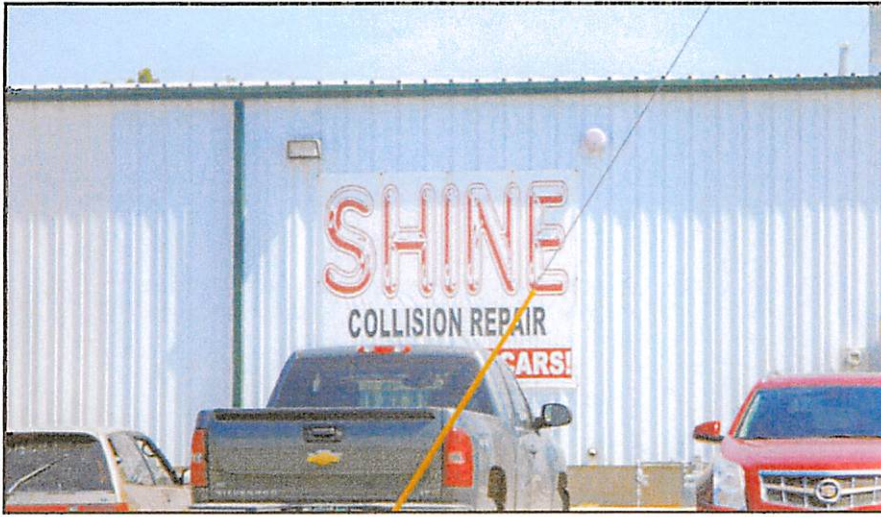
Comments

small sign has to be placed underneath that includes LICENSE # and STORE # per the State Regulations

Inventory Recommendation Detail

E03

INVENTORY



Sign Text		
SHINE COLLISION REPAIR		
Existing Sign Type		
Banner		
Height	Width	Depth
8'	9' 10"	N/A
Letter Height	OAH Above Grade	
N/A	N/A	
Sign Material	Mount	
Banner Material	Flush-Wall	
Face Type	Face Material	
N/A	Banner Material	
Retainer Type	Retainer Size	
N/A	N/A	
V.O Height	V.O. Width	
N/A	N/A	
Surface Color	Surface Material	
N/A	Aluminum	
Available Height	Available Width	
N/A	N/A	
Double Faced	Illumination Type	
	Non-Illuminated	

Comments

RECOMMENDATION



Proposed Action
Remove and Install
Proposed Sign Type
Wall Sign
Sign ID
3' 3" X 23' 6" Non-illuminated Wall sign
Description
Custom
Signage Text
gerber COLLISION & GLASS
Wall Repair
Remove existing banner, seal holes and patch, install new sign

Comments

Inventory Recommendation Detail

E04

INVENTORY



Sign Text		
SHINE COLLISION REPAIR		
Existing Sign Type		
Monument Sign		
Height	Width	Depth
4'	8'	N/A
Letter Height	OAH Above Grade	
N/A	N/A	
Sign Material	Mount	
Wood	Double Pole	
Face Type	Face Material	
N/A	Wood	
Retainer Type	Retainer Size	
N/A	N/A	
V.O Height	V.O. Width	
N/A	N/A	
Surface Color	Surface Material	
N/A	N/A	
Available Height	Available Width	
N/A	N/A	
Double Faced	Illumination Type	
YES	Non-Illuminated	

Comments

RECOMMENDATION



Proposed Action	
Remove and Install	
Proposed Sign Type	
Pylon Sign	
Sign ID	
Pylon - 5'1" x 14'9" - 17'11"OAH - 75sq ft	
Description	
Pylon - 5'1" x 14'9" - 17'11"OAH - 75sq ft	
Signage Text	
gerber COLLISION & GLASS	
Wall Repair	
Remove existing 2 pole sign, install new pylon and foundation	

Comments

Pending zone approval.

NOT CORRECT PLACEMENT OF PYLON. SEE NEXT PAGE.

Google Maps

E 04



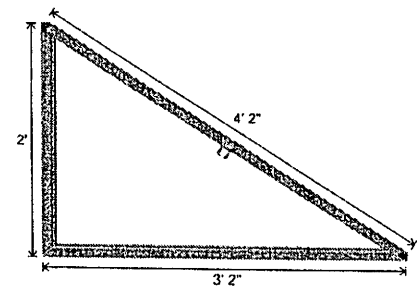
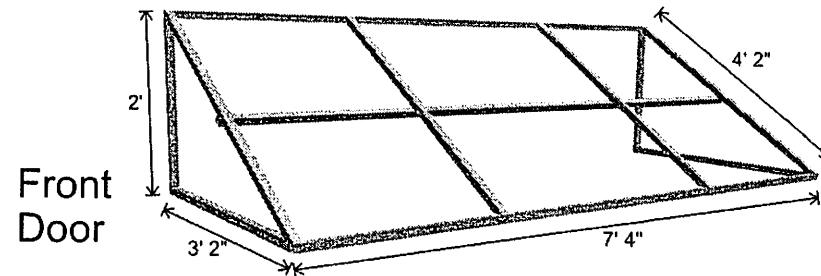
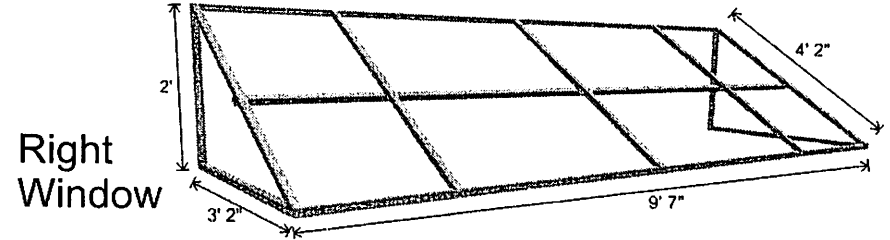
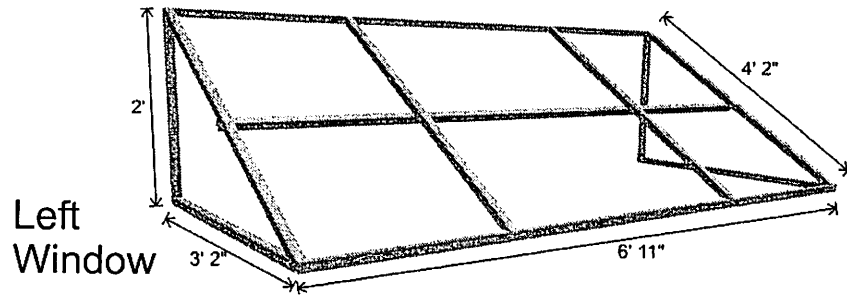
Image capture: Sep 2011 © 2016 Google

Ogden, Utah

Street View - Sep 2011



Gerber Ogden, Utah



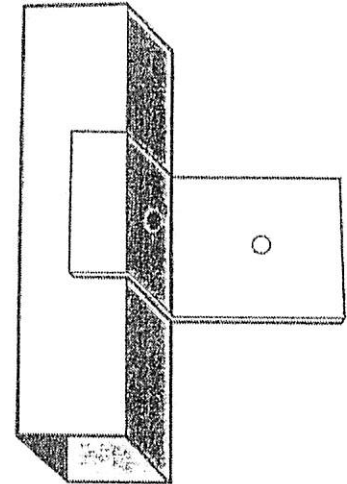
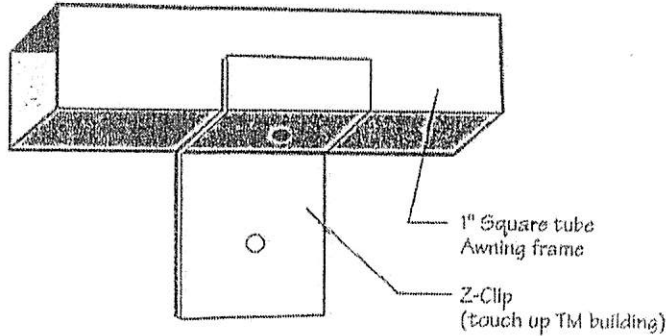
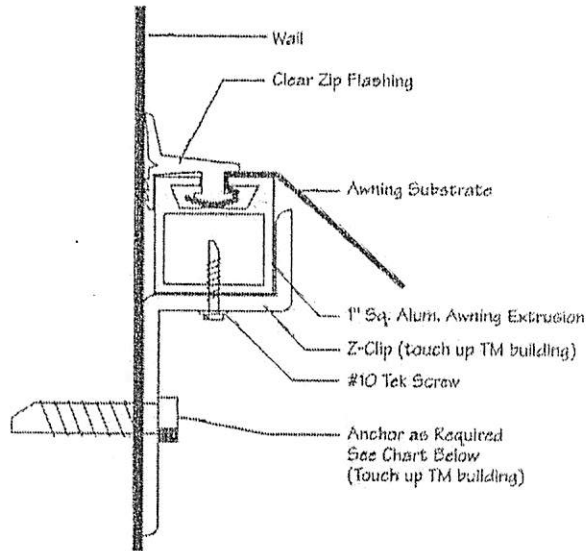
10.15.15

camelcanvas.com



Quality Since 1919

Frame: Welded aluminum 1" x 1" x .100 tube
Fabric: BTF 19 18oz Sapphire Blue F.R. Vinyl



The Awnings may be mounted on the wall using the Z Bracket clips that ship with the awnings. You may also bolt straight through the frame into the building using the appropriate wood (or metal) screw.

Mount the Z brackets on the wall, prior to dropping the awning on the clips. Leave the brackets a little slack for getting the awning in, then tighten up after hanging the awning.

Z brackets or bolts must also be attached to some of the vertical back bars to prevent wind uplift and provide safer awning attachment.

If there is a corner or frame break on a awning that meets and attaches to another awning corner or break, it is very important that these two pieces align and are bolted snug together to avoid a light leak. You may need to use a C-clamp to pull all of the frames together.

A bead of silicone should be smoothly and cleanly applied on the inside frame break to prevent water leaks.

	Masonry	Wood	Metal
1/4" Bolts Thru Wall	☒	☒	☒
1/4" Lags w/Shields	☒		
3/8" Lag Bolts		☒	
1/4" Toggle Bolts			☒

Mounting Hardware* Chart

***Note**

The engineer has not inspected the building. The mounting hardware shown on this drawing is suggested only. Actual mounting details are to be determined by the installer or a local engineer. Copies of this drawing should not be considered a certified document.

Z-Clip Awning Attachment Detail