

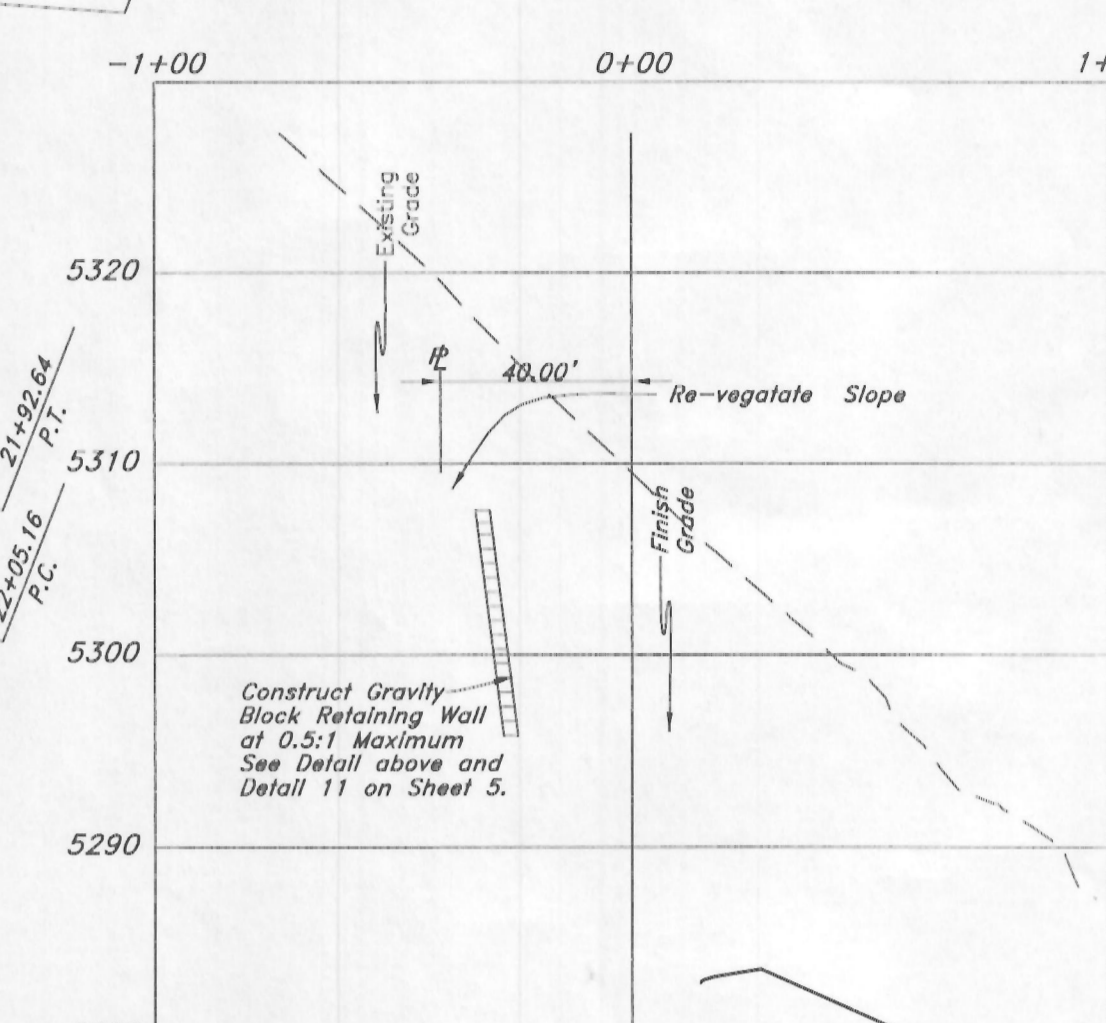
Legend

(Note: All items may not appear on drawing)

- ### Erosion Control Notes :
1. Sandbags will be placed at discharge locations to contain and divert storm water through straw bales.
 2. An earthen berm 6" high will be constructed to contain the storm water and divert it to discharge areas.
 3. Storm water will be discharged into an existing drainage system. Existing Lines shall be inspected prior to Certificate of Occupancy and cleaned if necessary.
 4. The Storm Water Prevention Plan shall conform to all State Division of Environmental Protection Regulations.

- Sanitary Sewer Manhole
- Water Manhole
- Storm Drain Manhole
- Electric Manhole
- Catch Basin
- Proposed Fire Hydrant
- Exist. Fire Hydrant
- Proposed Water Valve
- Sanitary Sewer Valve
- Culinary Water Line
- Gas Line
- Irrigation Line
- Storm Drain Line
- Telephone Line
- Secondary Water Line
- Underground Power Line
- Land Drain Line
- Flowline of Ditch
- Polyvinyl Chloride
- Top of Asphalt
- Edge of Asphalt
- Centerline
- Flowline
- Top of Curb
- Rim
- RM
- Finish Grade
- Exist. Grade
- 95.33TA
- 95.721A
- Direction of Flow Monument
- Section Corner
- Rebar & Cap
- Existing Asphalt
- Proposed Asphalt
- Heavy Duty Asphalt
- Concrete
- Building or Structure

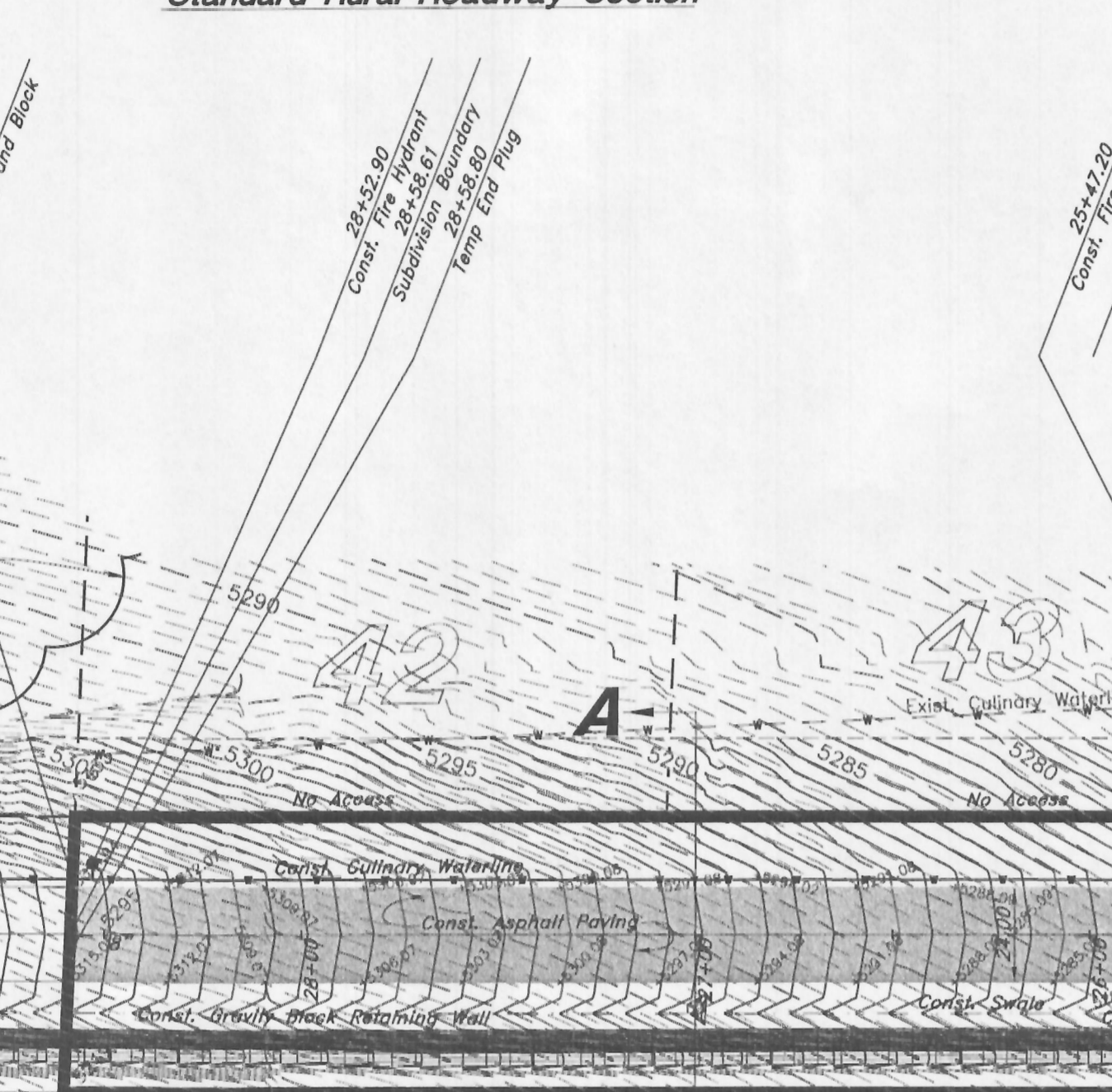
Note: Cut and Fill slopes need to conform with the geotechnical report.



Road Cross Section (A-A)

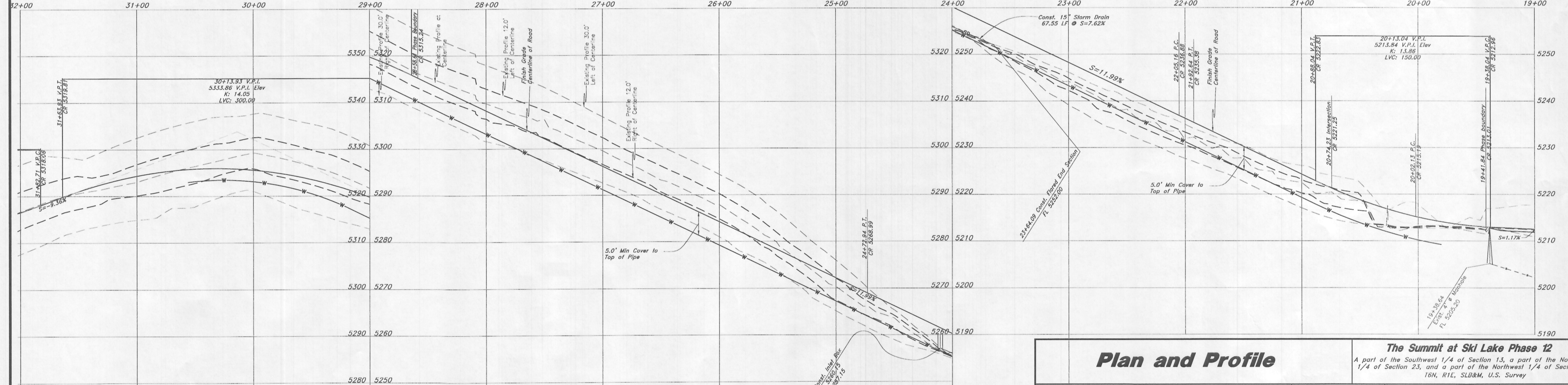
Standard Rural Roadway Section

STREET DESIGN	R.O.W. WIDTH	Surface Course WIDTH	Shoulder WIDTH
1 Minor and/or Private	50'	24'	4'
Standard Residential	60'	24'	4'
Collector	66'	28'	5'
2) Minor Arterial	80'	44' (30")	4' 3/4
2) Major Arterial	100'	(Consult County Engineer for Specific Requirements)	



Via Cortina

60' Wide Right of Way



Plan and Profile

The Summit at Ski Lake Phase 12
 A part of the Southwest 1/4 of Section 13, a part of the Northeast 1/4 of Section 23, and a part of the Northwest 1/4 of Section 24, 16N, 11E, SLB&M, U.S. Survey

GREAT BASIN ENGINEERING NORTH
 CONSULTING ENGINEERS AND SURVEYORS
 5746 South 1475 East - Suite 200
 Ogden, Utah 84403
 P.O. Box 150048, Ogden, Utah 84415
 Ogden (801)384-4615 Salt Lake City (801)531-0232 Fax (801)384-7844

SCALE : 1" = 40'
 DRAWN : RB
 11N224

DATE : 26 Jun, 2013
 REVISIONS :

DRWG. NO. 2
 Of 5