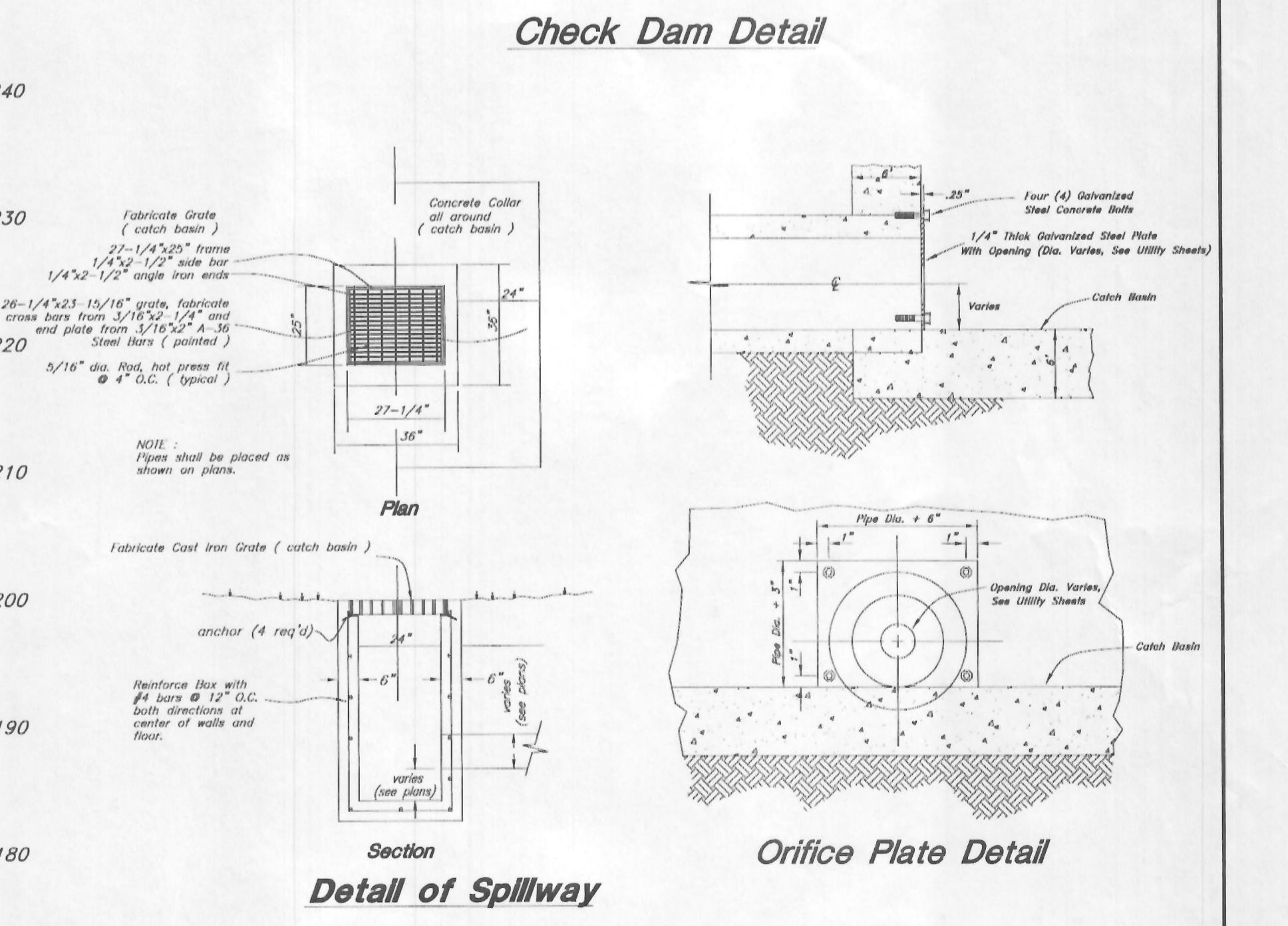
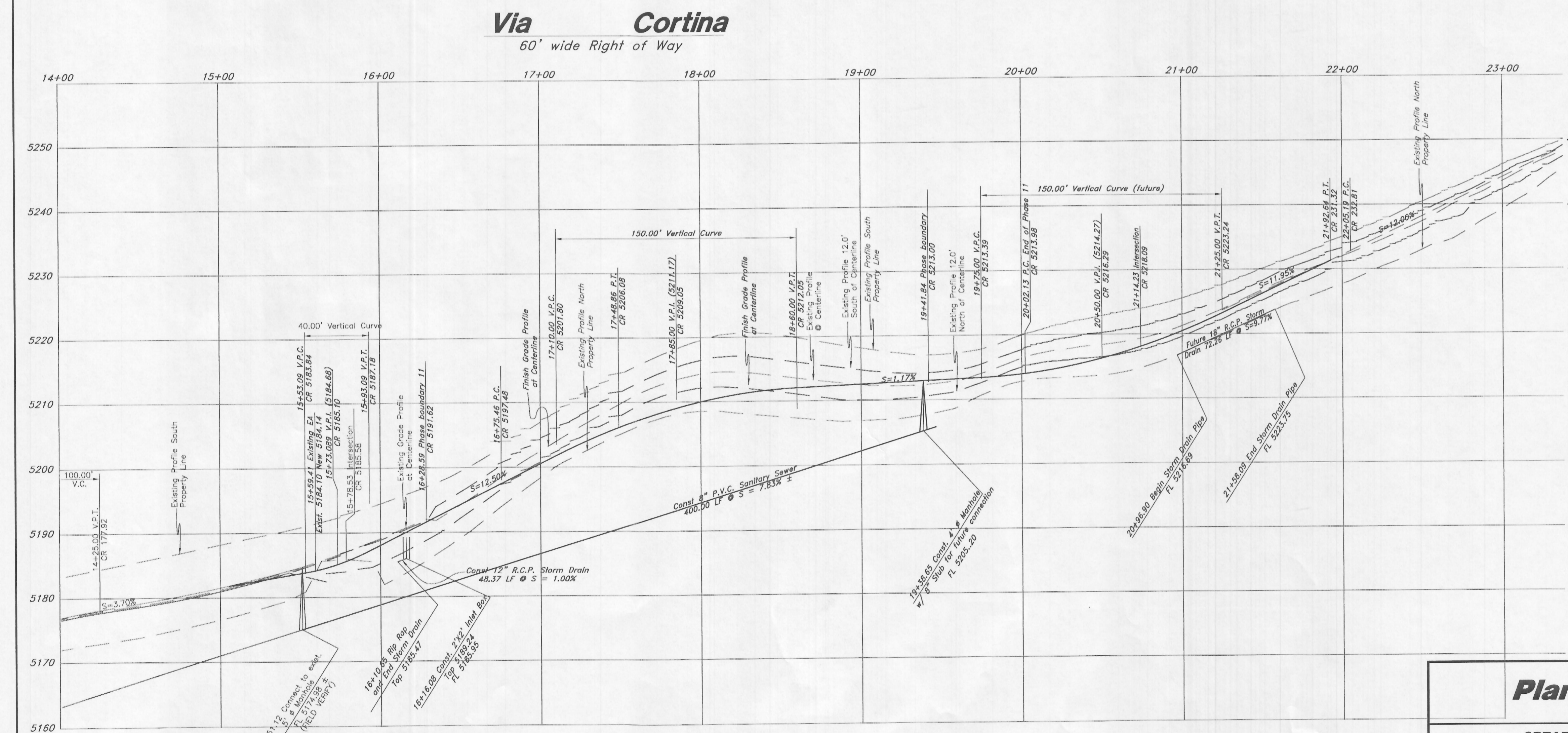


### Legend

(Note: All items may not appear on drawing)

Sanitary Sewer Manhole	⊙
Water Manhole	⊙
Storm Drain Manhole	⊙
Electric Manhole	⊙
Catch Basin	⊙
Proposed Fire Hydrant	⊙
Exst. Water Valve	⊙
Proposed Water Valve	⊙
Sanitary Sewer Line	—S—
Culinary Water Line	—W—
Gas Line	—G—
Irrigation Line	—I—
Storm Drain Line	—SD—
Telephone Water Line	—TW—
Secondary Water Line	—SW—
Underground Power Line	—P—
Land Drain Line	—LD—
Fence	—X—X—
Flowline of Ditch	—F—
Polyvinyl Chloride	—PVC—
Top of Asphalt	—EA—
Edge of Asphalt	—E—
Centerline	—CL—
Flowline	—FL—
Top of Curb	—TC—
Rim	—RM—
Finish Grade	—FG—
Exst. Grade	—EG—
Direction of Flow	→
Monument	⊙
Section Corner	⊙
Rebar & Cap	⊙
Existing Asphalt	▨
Proposed Asphalt	▨
Heavy Duty Asphalt	▨
Concrete	▨
Building or Structure	▨



## Plan and Profile

**GREAT BASIN ENGINEERING NORTH**  
CONSULTING ENGINEERS AND SURVEYORS

5746 South 1475 East - Suite 200  
Ogden, Utah 84403  
P.O. Box 150048, Ogden, Utah 84415  
Ogden (801)304-4015 Salt Lake City (801)301-0222 Fax (801)302-7044

**The Summit at Ski Lake Phase 11**  
A part of the Southwest 1/4 of Section 13, a part of the Northeast 1/4 of Section 23, and a part of the Northwest 1/4 of Section 24, T6N, R1E, S18&M, U.S. Survey

SCALE: 1" = 40'  
DATE: 17 Dec, 2010  
DRAWN: TK  
REVISIONS: 19 Sep, 2012  
96N120SUMMIT 11AAMP

DRWG. NO. 1  
Of 3