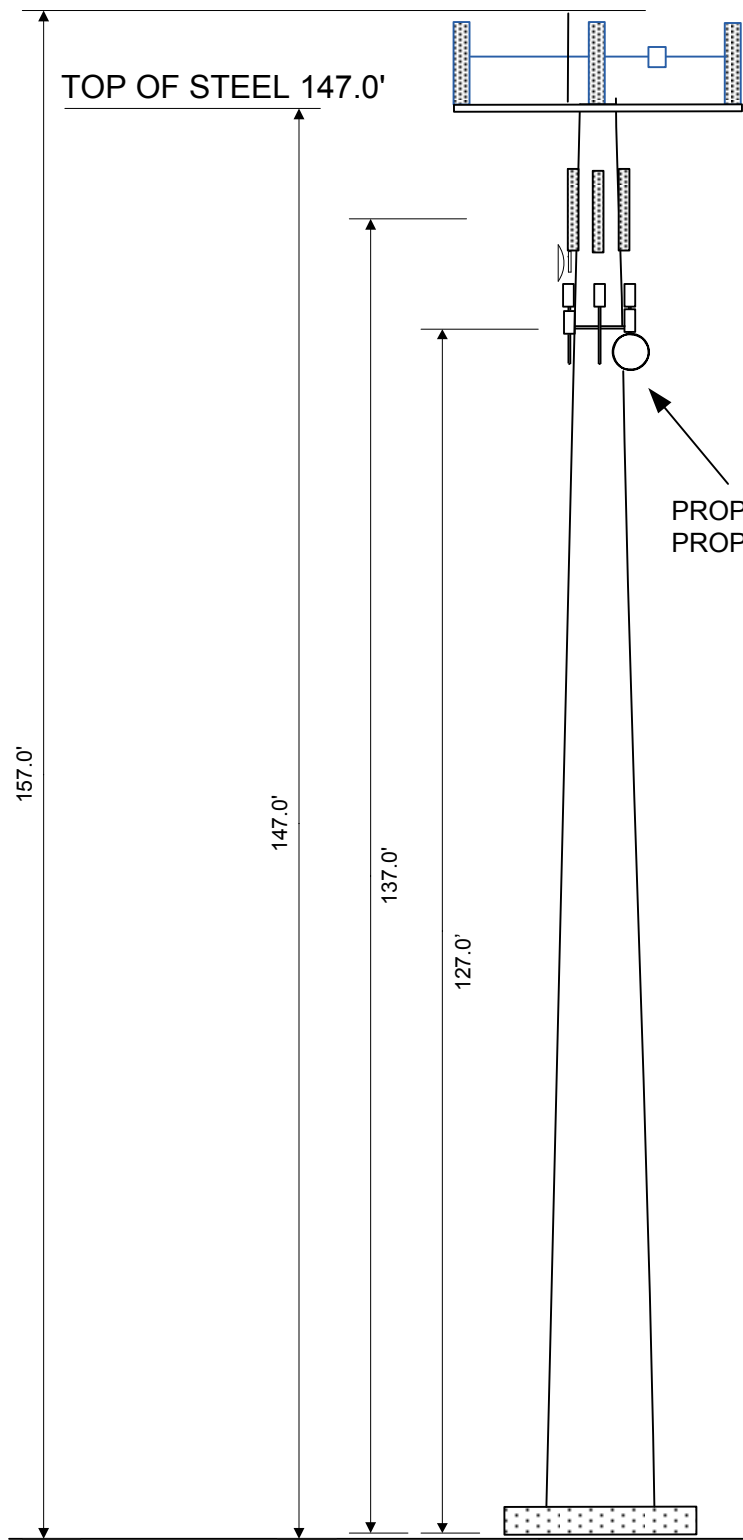


TOP OF APPURTENANCE / TOP OF LIGHTENING ROD 157.0'

TOP OF STEEL 147.0'



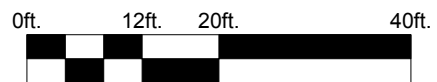
PROPOSED PANEL ANTENNAS (9) AZ-45/190/270 @ 147.0'  
 PROPOSED 19" BOB/SSB/RET/RCU/RRU/RRH (5) AZ - 45/190/270  
 MOUNT HEIGHT@ 147.0'


LEASED 6'9" ANTENNAS (3)  
 MOUNT HEIGHT@ 137.0' AZ - 40/160/290  
 LEASED 2.0' STANDARD DISH ANTENNA (1)  
 MOUNT HEIGHT@ 137.0' AZ - 306

PROPOSED PANEL ANTENNAS (10) AZ-0/60/120/180/240/300 @ 127'  
 PROPOSED 2.0' STANDARD DISH ANTENNA (1) AZ-167 @ 127'

**ENTRY / EXIT PORTS**

HEIGHT ( O.C.)	3 FT	8 FT	80FT	90FT	100FT	127FT	134FT	NA	NA
SIZE	2'x9"	2'x9"	8"x 5"	8" x5"	11" x 8"	11" x 8"	6" x 8"	NA	NA
Azimuth	90	180	90	90	140	140	100	NA	NA
Azimuth	270	NA	270	270	230	230	290	NA	NA
Azimuth	NA	NA	NA	NA	360	360	NA	NA	NA
Azimuth	NA	N/A	NA	NA	NA	NA	N/A	N/A	N/A



 American Tower Corporation	NORTH OGDEN			
	TOWER ELEVATION			
Jim Anderson	SIZE <b>B</b>	DATE 04-08-13	Site # <b>310320</b>	REV <b>4</b>
4/18/2014	SCALE 1" = 10'			SHEET 2 OF 4