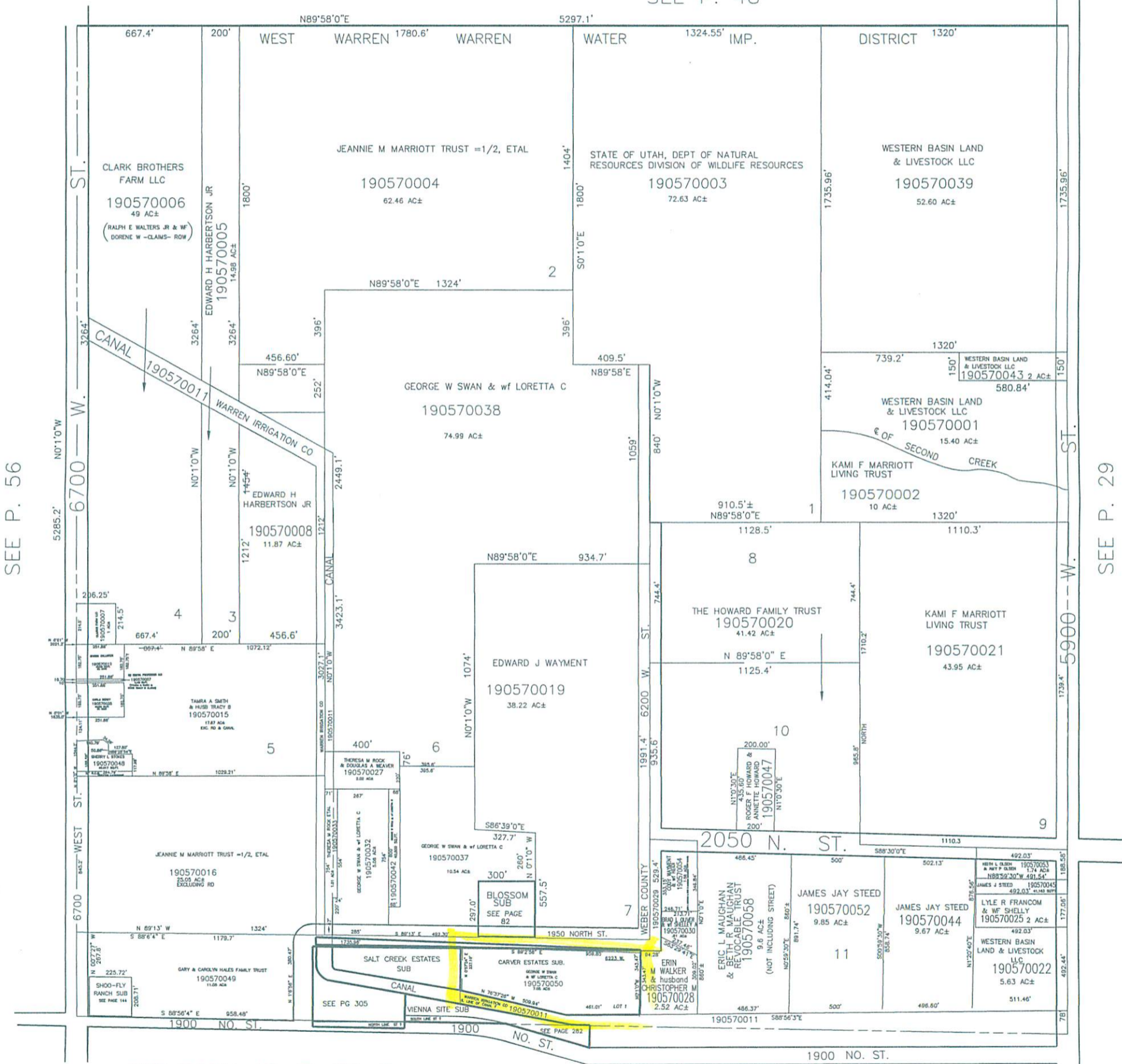


SECTION 36, T.7N.,R3W., S.L.B.&M.
IN WEBER COUNTY
SCALE 1" = 400'

TAXING UNIT: 108

SEE P. 48



SEE P. 56

SEE P. 29

SEE BOOK 10, P. 28-3

SEE BOOK 10, P. 28

NOTE: SEE ORIGINAL PLAT IN BOOK 6, P.71 FOR COMPLETE DATA