

N 7

TAXING UNIT: 317

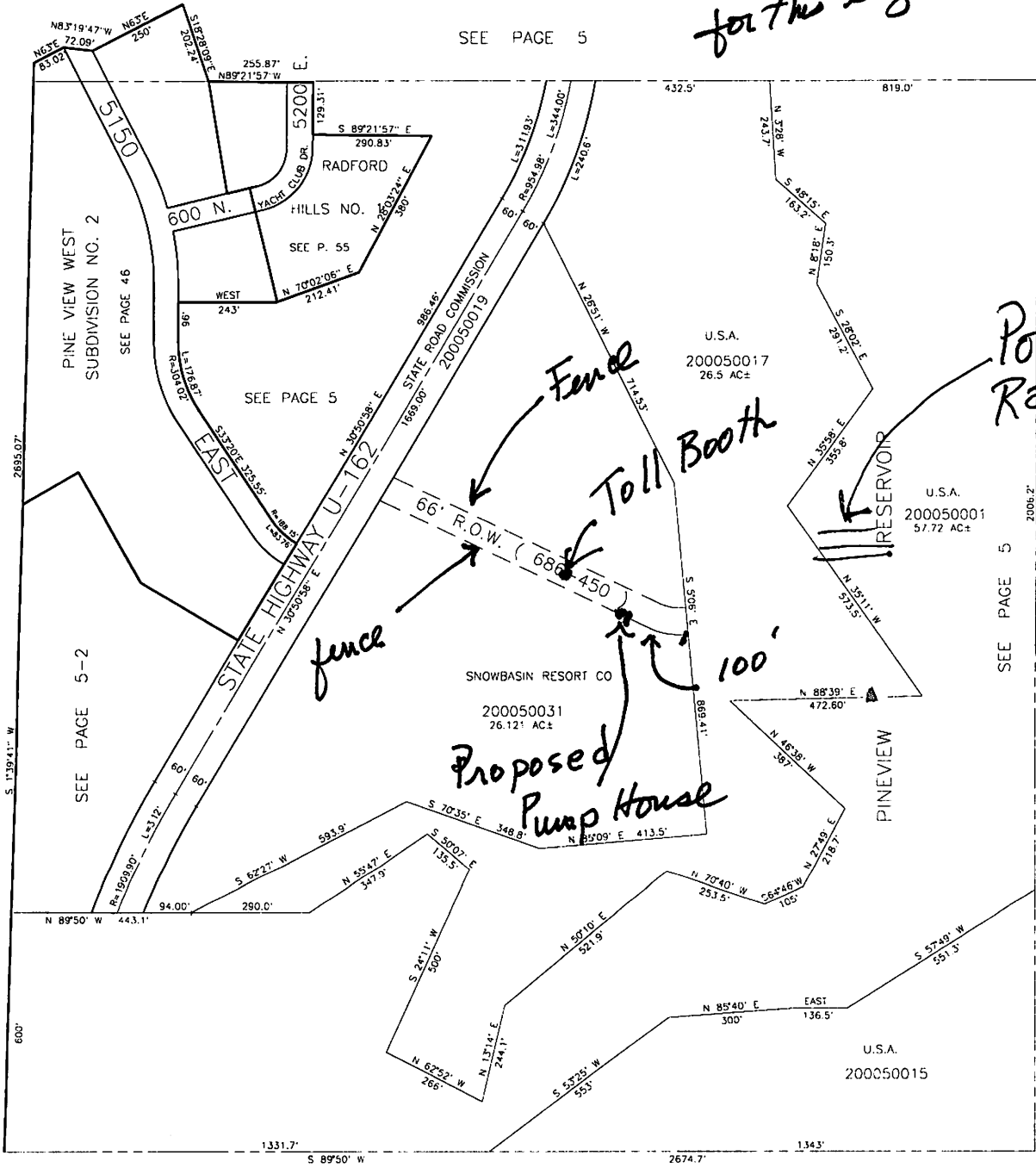
SECTION 10, T.6N., R.1E., S.L.B. & M.

IN WEBER COUNTY
SCALE 1" = 200'

SEE PAGE 5

Scale not correct for this size map.

SPURLOCK SUBDIVISION PLAT 1
SEE PAGE 6 & 7



S 1

Pine View West
Pumphouse site plan

SR 16Z

NW
↑
↓
SE

(686-450)

66' R.O.W.



to Boat Ramp
and Parking

Pinus Mugo (cover
vegetation)

Port Ramp
Entry Station

Pinus Mugo (cover vegetation)

6' x 12' Board & Batten Pump
House - Asphalt Shingles for
roof and Composite cedar
tone siding

2-pipe ballards filled with
concrete - Caution yellow

