

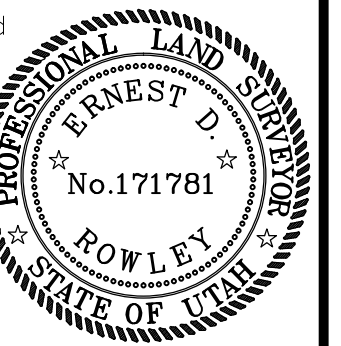
Annexation to Taylor–West Weber Water District Resolution No. ___ and Annexation to Central Weber Sewer Improvement District Resolution No. ___

PART OF THE NE 1/4 OF SECTION 4, TOWNSHIP 5 NORTH,
RANGE 2 WEST, SALT LAKE BASE & MERIDIAN
Weber County, Utah, Prepared Sept. 21, 2015

NE cor Sec 4, T5N, R2W, SLB&M, 1962
location documented by the Weber County
Surveyors Office on tie sheet 11-21 having
W.Co.S. NAD27 coordinates of X=1844960.81
Y=318192.15

SURVEYOR'S CERTIFICATE

I, Ernest D. Rowley, do hereby certify that I am a professional land surveyor in the State of Utah and hold license no. 171781-2201 in accordance with Title 58, Chapter 22 known as the Professional Engineers and Land Surveyors Licensing Act. That I have prepared this plat in accordance with UCA 17-23-20. That this plat and the description hereon are sufficient to enable the county surveyor to establish the boundary on the ground and sufficient to enable the county recorder to identify, for tax purposes, each tract or parcel included within the boundary.



BOUNDARY DESCRIPTION

A tract of land in the Northeast Quarter of Section 4, Township 5 North, Range 2 West, Salt Lake Base and Meridian, having a basis of bearing of South 00°53'10" West between the monumented locations of the Northeast Corner (W.Co.S. NAD1927 published grid coordinates of X=1844960.81 Y=318192.15) and the East Quarter Corner (W.Co.S. NAD1927 published grid coordinates of X=1844919.86 Y=315544.49) of said Section 4, said tract being a part of land deeded Entry#2398898 on Mar 19, 2009, being described as follows:
BEGINNING at a point located 535.45 feet South 00°53'10" West along the monumented section line and 40.00 feet North 89°06'50" West to the deeded right of way line of 3500 West Street as conveyed by Warranty Deed Entry#2740825 recorded on Jun 16, 2015, FROM said Northeast Corner of Section 4;
RUNNING thence South 00°53'10" West 300.00 feet, along the right of way of 3500 West Street as conveyed by Warranty Deeds Entry# 2740825 recorded on Jun 16, 2015 and Entry#2727225 recorded on Mar 23, 2015;
Thence South 87°57'00" West 255.84 feet;
Thence North 00°53'10" East 163.18 feet;
Thence North 14°12'10" West 139.01 feet;
Thence North 62°57'31" East 71.00 feet;
Thence South 27°27'39" East 58.81 feet;
Thence North 62°57'31" East 73.05 feet;
Thence South 89°06'50" East 136.49 feet, to the point of beginning.
Containing 1.8375 acres, more or less.

WEBER COUNTY SURVEYOR

This plat is hereby approved as a final local entity plat as required by UCA 17-23-20.
Approved this ___ day of _____, 20___.

Weber County Surveyor

WATER DISTRICT ACCEPTANCE

I hereby certify that this annexation to the Taylor–West Weber Water District has been accepted by the District by Resolution passed on the ___ day of _____, 20___.

Approved this ___ day of _____, 20___.

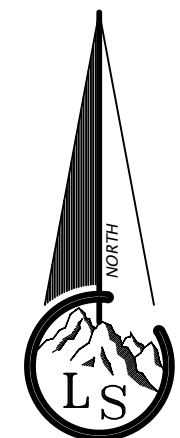
District Manager

SEWER DISTRICT ACCEPTANCE

I hereby certify that this annexation to the Central Weber Sewer Improvement District has been accepted by the District by Resolution passed on the ___ day of _____, 20___.

Approved this ___ day of _____, 20___.

District Manager

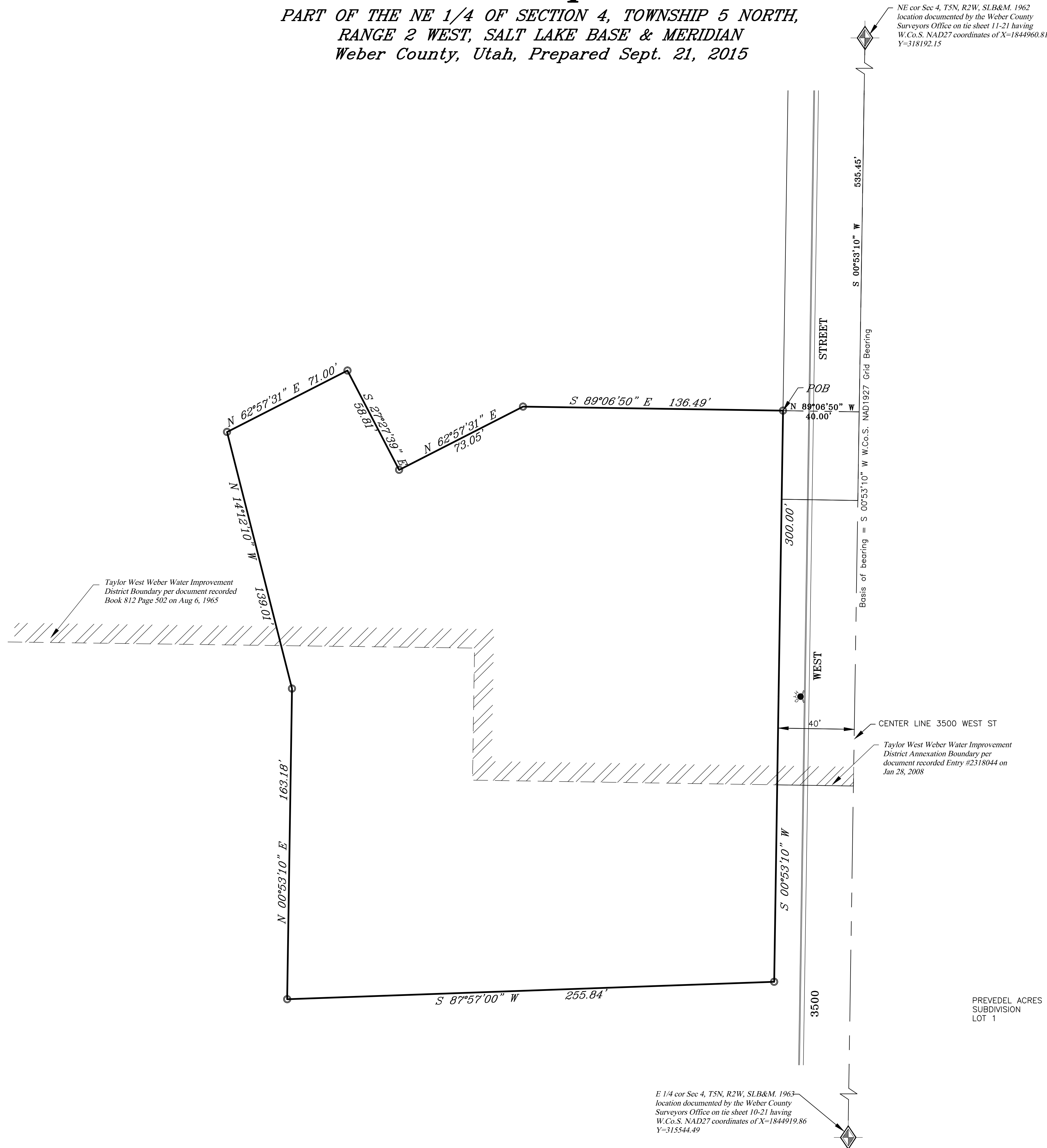
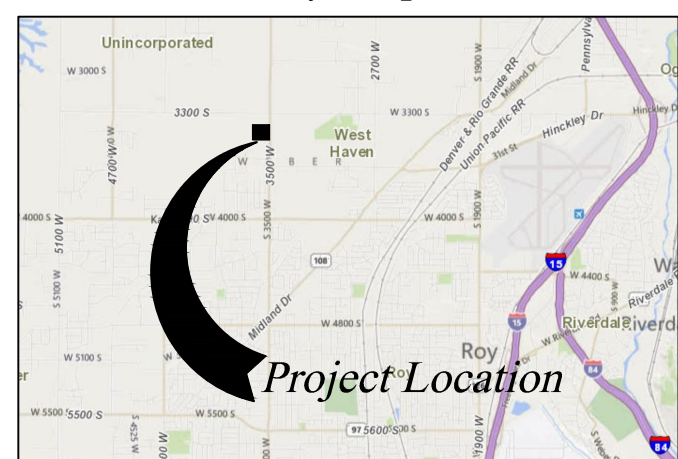


Scale ~ 1" = 30'

Legend

- EXISTING DISTRICT BOUNDARY
- STREET CENTERLINE
- SECTION CORNER
- STREET MONUMENT

Vicinity Map



Taylor West Weber Water Improvement
District Boundary per document recorded
Book 812 Page 502 on Aug 6, 1965

Taylor West Weber Water Improvement
District Annexation Boundary per
document recorded Entry #2318044 on
Jan 28, 2008

E 1/4 cor Sec 4, T5N, R2W, SLB&M, 1962
location documented by the Weber County
Surveyors Office on tie sheet 10-21 having
W.Co.S. NAD27 coordinates of X=1844919.86
Y=315544.49

PREVEDEL ACRES
SUBDIVISION
LOT 1

Landmark Surveying, Inc. <small>A Complete Land Surveying Service www.LandmarkSurveyUtah.com</small>		4646 South 3500 West - #A-3 West Haven, UT 84401 801-731-4075	Weber County Recorder Entry no. _____ Fee paid _____ Filed for record and recorded ___ day of _____, 2015. at _____ in book _____ of official records, on page _____ County Recorder: Leann H Kilts By Deputy: _____
CLIENT: Wayne and/or Colton Prevedel Address: 3369 South 3500 West, West Haven, Utah 84401			
NE 1/4 of Section 4, Township 5 North, Range 2 West, Salt Lake Base and Meridian.			
Revisions _____ DRAWN BY: EDR CHECKED BY: _____ DATE: 9/21/2015 FILE: 3481			