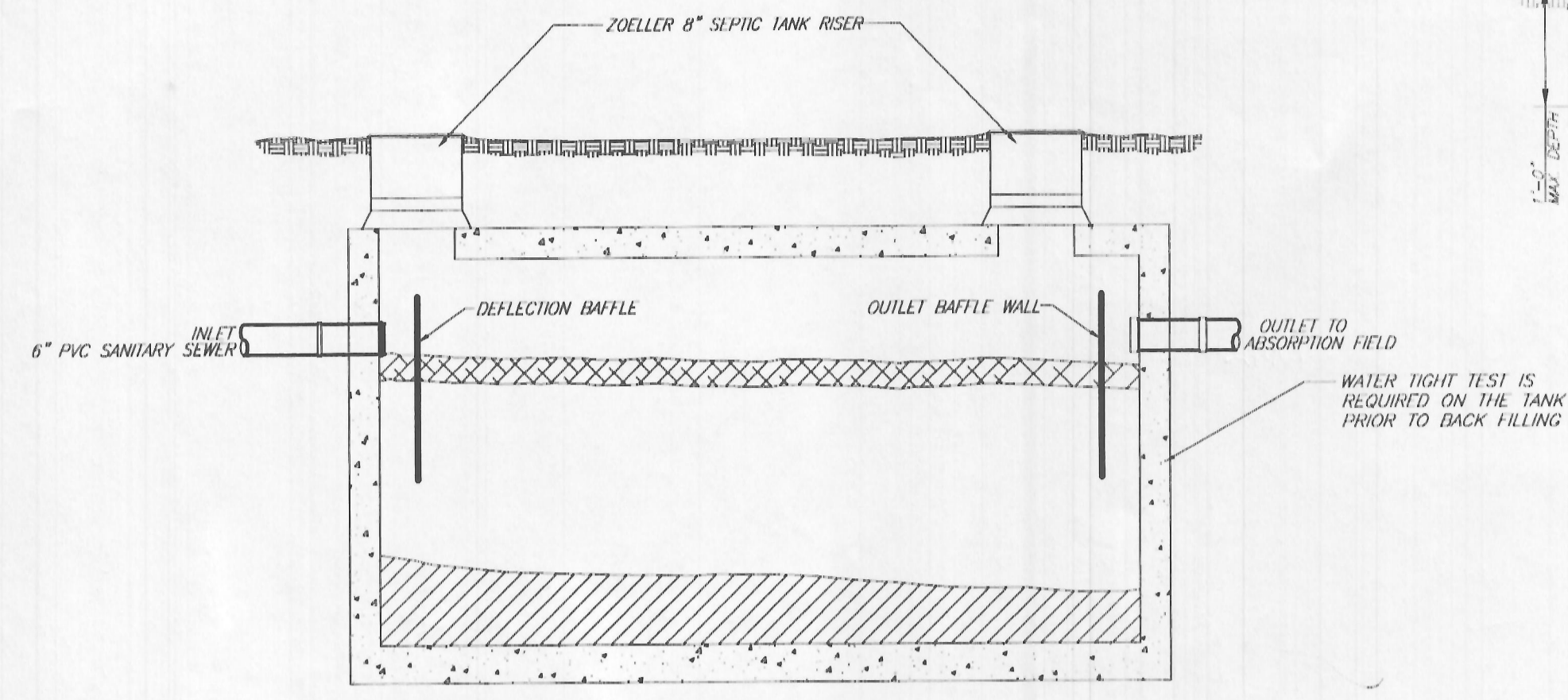
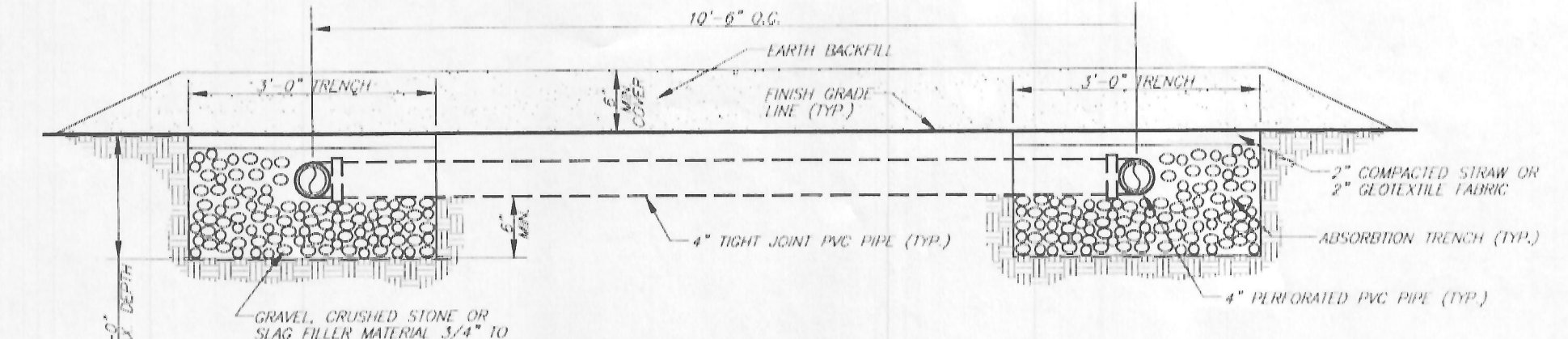


Typical Absorption Field
SCALE: NTS

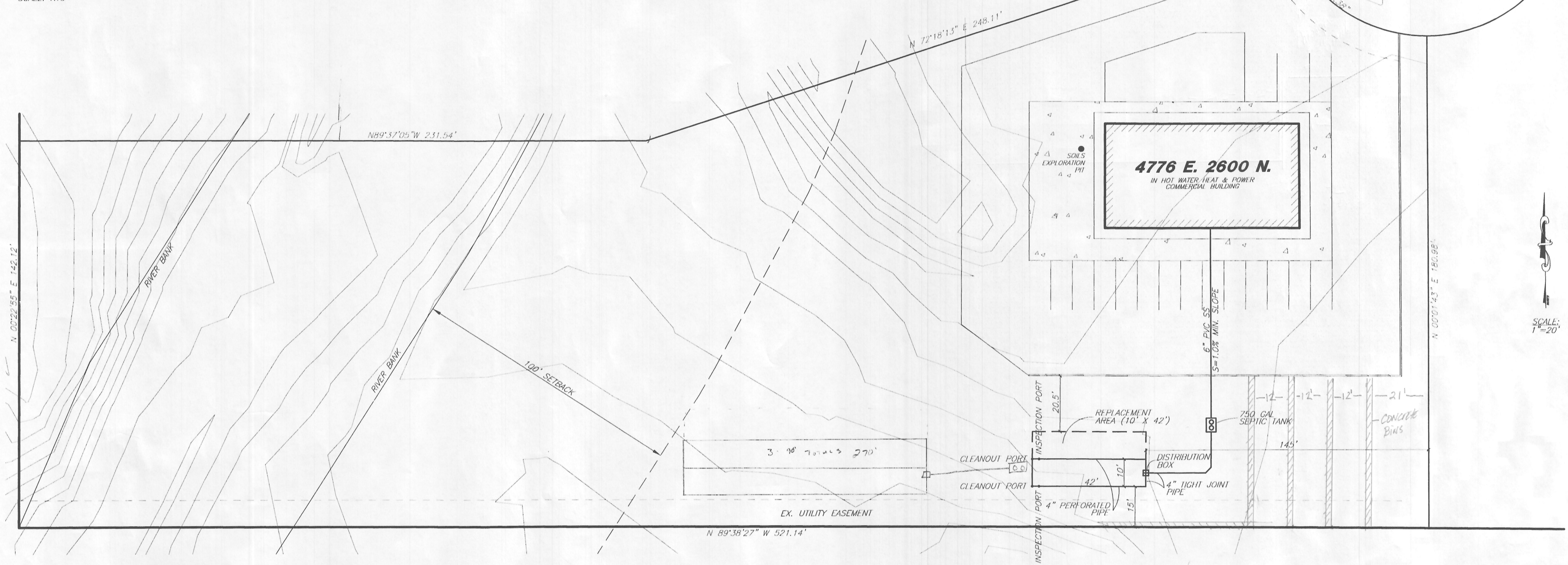
1. 4" PVC PERFORATED PIPE LEVEL THROUGHOUT ITS LENGTH
2. 4" PVC PIPE LAID WITH TIGHT JOINTS
3. 6" PVC PIPE



Septic Tank Detail
SCALE: NTS



Detail-Absorption Trench
SCALE: NTS



Notes

1. THE STONE OR "GRAVEL" FILL USED IN ABSORPTION FIELD TRENCHES SHALL CONSIST OF CRUSHED STONE, GRAVEL, OR SIMILAR MATERIAL, RANGING FROM 3/4 TO 2 1/2 INCHES IN DIAMETER. IT WILL BE FREE FROM FINES, DUST, SAND, OR ORGANIC MATERIAL AND SHALL BE DURABLE, AND RESISTANT TO SLAKING AND DISSOLUTION. IT SHALL EXTEND THE FULL WIDTH OF THE TRENCH, SHALL BE NOT LESS THAN 6 INCHES DEEP BENEATH THE BOTTOM OF THE DISTRIBUTION PIPES, AND SHALL COMPLETELY ENCASE AND EXTEND AT LEAST 2 INCHES ABOVE THE TOP OF THE DISTRIBUTION TRENCH.
2. THE DISTRIBUTION PIPE SHALL BE CENTERED IN THE ABSORPTION TRENCH AND PLACED THE ENTIRE LENGTH OF THE TRENCH.
3. IN LOCATIONS WHERE THE SLOPE OF THE GROUND OVER THE ABSORPTION FIELD AREA IS RELATIVELY FLAT, THE TRENCHES SHOULD BE INTERCONNECTED TO PRODUCE A CLOSED-LOOP OR CONTINUOUS SYSTEM AND THE DISTRIBUTION PIPES SHOULD BE LEVEL.
4. AT GRADE SYSTEMS MAY NOT BE INSTALLED ON SLOPING GROUND GREATER THAN 4%.
5. A 10' MIN. DISTANCE BETWEEN SEPTIC TANK AND DISTRIBUTION TEE WILL BE REQUIRED FOR PLACEMENT OF A PIPING CHAMBER, WHICH WILL BE REQUIRED FOR CONVERSION TO A PRESSURE DISTRIBUTION SYSTEM SHOULD THE ORIGINAL SYSTEM FAIL.
6. SYSTEMS SHALL BE MONITORED AT A PERIOD OF 6 MONTHS AND 1 YEAR AFTER INITIAL USE OF THE SYSTEM, AND ANNUALLY THEREAFTER, FOR A TOTAL OF 5 YEARS.
7. REPAIRS MUST BE MADE AS SOON AS POSSIBLE AFTER A MALFUNCTION IS DISCOVERED.
8. NO TREES, CONCRETE, STRUCTURES, LIVESTOCK, OR ACTIVITY OVER THE AT-GRADE SYSTEM, NOR REPLACEMENT AREA.
9. SURFACE WATER TO BE DIRECTED AWAY FROM THE AT-GRADE SYSTEM.

Proprietary Notice
This document contains information proprietary to Reeve and Associates, Inc. It may not be disclosed to others for any purpose or used for installation purposes without the written permission of Reeve and Associates, Inc.

Engineer's Notice To Contractors
THE EXISTENCE AND LOCATION OF ANY UNDERGROUND UTILITY PIPES OR STRUCTURES SHOWN ON THESE PLANS WERE OBTAINED FROM AVAILABLE INFORMATION PROVIDED BY OTHERS. THE LOCATIONS SHOWN ARE APPROXIMATE AND SHALL BE CONFIRMED IN THE FIELD BY THE CONTRACTOR, SO THAT ANY NECESSARY ADJUSTMENT CAN BE MADE IN ALIGNMENT AND/OR GRADE OF THE PROPOSED IMPROVEMENT. THE CONTRACTOR IS REQUIRED TO CONTACT THE UTILITY COMPANIES AND TAKE DUE PRECAUTIONARY MEASURE TO PROTECT ANY UTILITY LINES SHOWN, AND ANY OTHER LINES OBTAINED BY THE CONTRACTORS RESEARCH, AND OTHERS NOT OF RECORD OR NOT SHOWN ON THESE PLANS.

THE ENGINEERS OF REEVE & ASSOCIATES, INC. DISCLAIM ANY LIABILITY FOR ANY CHANGES MADE TO ENGINEERS' PLANS OR SPECIFICATIONS WITHOUT THEIR CONSENT.

Absorption Field Trench

SEEPAGE = 40.00 MINUTES / INCH OVER ENTIRE AREA
TRENCH WIDTH = 3 FT
TRENCH LENGTH = VARIES (SEE MAP)
SPACING FROM EDGE TRENCH TO EDGE TRENCH = 7.5 FT
FIELD AREA = 25 GALLONS PER DAY PER EMPLOYEE
8 EMPLOYEES MAX
25 x 8 = 200 GALLONS PER DAY
MAX RATE OF APPLICATION (GAL PER S.F. PER DAY) = 0.8
200/0.8 = 250 S.F.
250 S.F./3 I.F. TRENCH = 84 I.F. TRENCH

Septic Tank

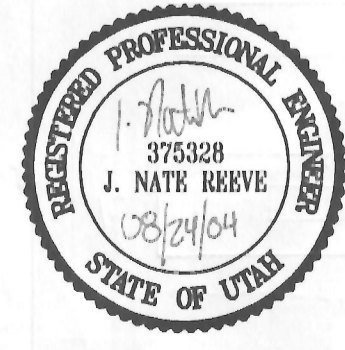
750 GALLON

REEVE & ASSOCIATES, INC.
Civil Engineering • Structural Engineering
Surveying • Land Planning • Landscape Architecture
EXECUTIVE BUILDING, 4155 S. HARRISON BLVD., #310
OGDEN, UTAH 84403
(801) 821-3100 FAX (801) 821-2666

**Conventional
Drainfield Design**

**In Hot Water Heat & Power
Lot #19 Valley Junction**
PART OF THE NW 1/4 OF SECTION 18, T17N, R1E, S1E & M
BEAR, GARFIELD COUNTY
UTAH
AUGUST, 2004

DESIGNED BY: J. REEVE
DRAWN BY: J. REEVE
DATE: 8-27-04
REVISIONS
1
2
3
LOT #19 VALLEY JUNCTION
PROJECT NO. 4864-01
SHEET 1 SHEETS



Blue Stakes Location Center
**Call: Toll Free
1-800-662-4111**
Two Working Days Before You Dig

THESE PLANS AND SPECIFICATIONS ARE THE PROPERTY OF REEVE & ASSOCIATES, INC., EXECUTIVE BUILDING, 4155 S. HARRISON BLVD., #310, OGDEN, UTAH, 84403, AND SHALL NOT BE COPIED, REDUCED, OR REPRODUCED WITHOUT THEIR WRITTEN PERMISSION.