

PHASE 1F AT POWDER MOUNTAIN

THE SOUTHEAST QUARTER OF SECTION 6, TOWNSHIP 7 NORTH, RANGE 2 EAST, SALT LAKE BASE AND MERIDIAN
WEBER COUNTY, UTAH
AUGUST 2016

NORTHEAST CORNER SECTION 6, TOWNSHIP 7 NORTH, RANGE 2 EAST
SALT LAKE BASE AND MERIDIAN
FOUND 1944 GLO BRASS CAP, GOOD CONDITION
(CLOSING CORNER 17.68" SOUTH)

FOUND WEBER COUNTY LINE MONUMENT PER WEBER COUNTY SURVEYOR 2013, GOOD CONDITION

BASIS OF BEARINGS
N 89°55'51" W 1381.07'
(N 89°56'05" W 1380.98'
RECORD)
STATE PLANE GRID PER WEBER COUNTY SURVEY OFFICE

NORTHEAST CORNER SECTION 1, TOWNSHIP 7 NORTH, RANGE 1 EAST
SALT LAKE BASE AND MERIDIAN
FOUND GLO 1944 BRASS CAP, GOOD CONDITION

EAST 1/4 COR. SECTION 6, TOWNSHIP 7 NORTH, RANGE 2 EAST
SALT LAKE BASE AND MERIDIAN.

WEST 2808.543'

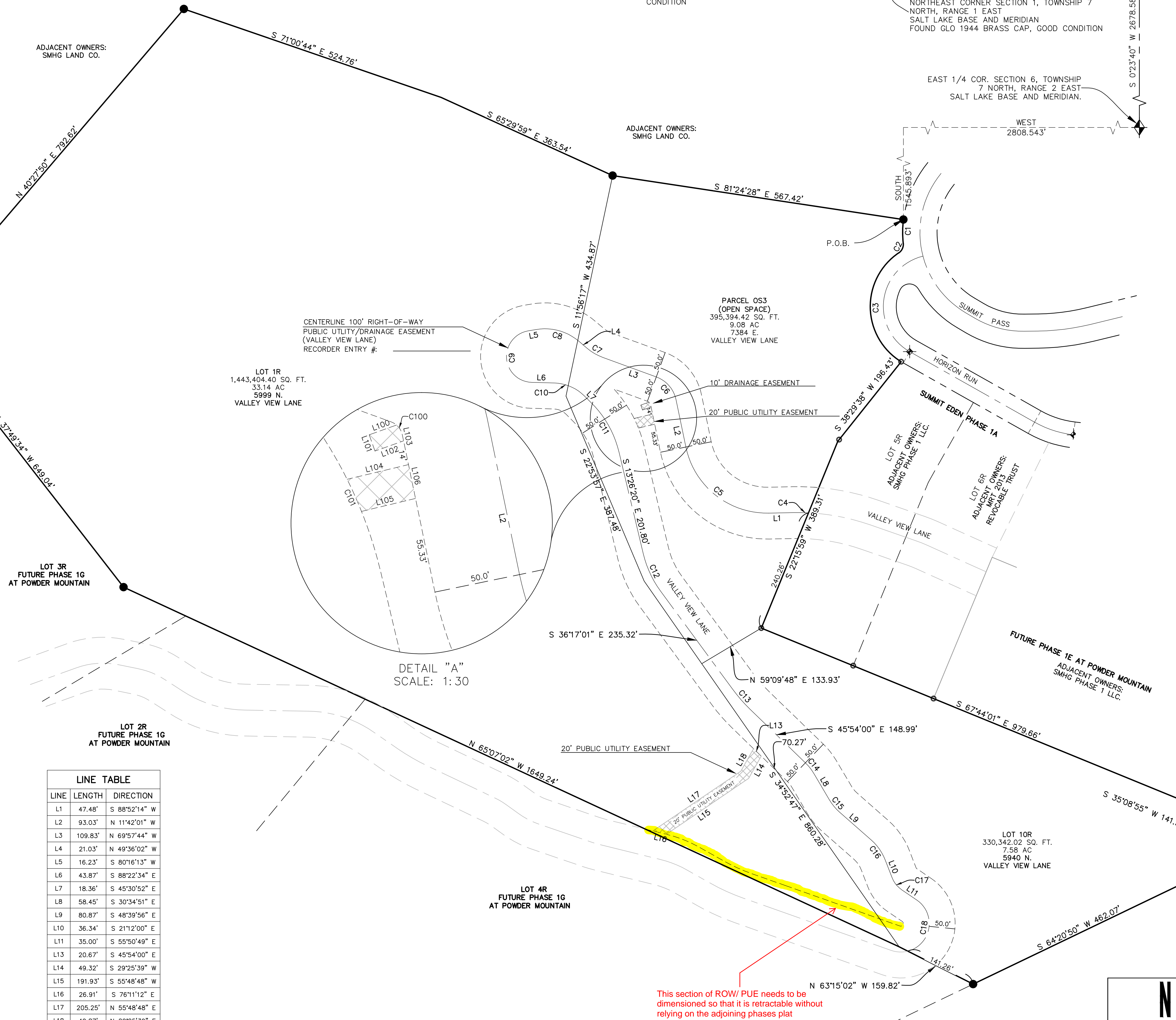
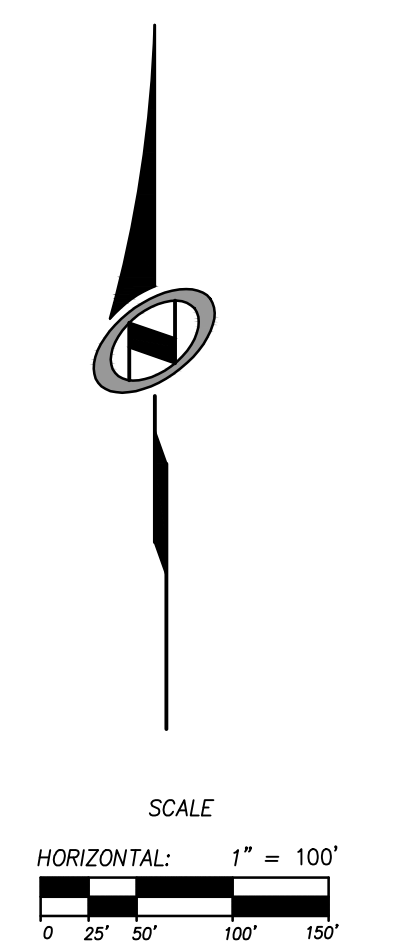
LINE TABLE		
LINE	LENGTH	DIRECTION
L100	16.82'	S 70°23'45" W
L101	10.00'	S 19°36'15" E
L102	17.56'	S 70°23'45" W
L103	3.66'	N 11°42'01" W
L104	36.51'	N 76°33'40" E
L105	32.12'	N 76°33'40" E
L106	20.01'	S 11°42'01" E

CURVE TABLE					
CURVE	LENGTH	RADIUS	DELTA	LONG CHORD	LENGTH
C100	10.17'	10.00'	58°15'43"	N 40°49'53" W	9.74'
C101	20.36'	250.00'	4°39'59"	N 24°09'33" W	20.36'

CURVE TABLE					
CURVE	LENGTH	RADIUS	DELTA	LONG CHORD	LENGTH
C1	45.92'	206.26'	12°45'25"	S 0°26'40" W	45.83'
C2	21.56'	20.00'	61°46'12"	S 24°57'03" W	20.53'
C3	249.16'	125.00'	114°12'17"	S 11°5'59" E	209.91'
C4	29.34'	425.00'	3°57'20"	N 89°09'05" W	29.34'
C5	221.81'	160.00'	79°25'44"	S 51°24'53" E	204.47'
C6	61.01'	60.00'	58°15'43"	N 40°49'53" W	58.42'
C7	35.54'	100.00'	20°21'42"	S 59°46'53" E	35.35'
C8	87.49'	100.00'	50°07'45"	N 74°39'55" W	84.73'
C9	147.17'	50.01'	168°37'13"	S 4°03'34" E	99.52'
C10	63.59'	85.00'	42°51'42"	N 66°56'43" W	62.11'
C11	111.97'	200.00'	32°04'33"	N 29°28'36" W	110.51'
C12	79.74'	200.00'	22°50'41"	S 24°51'40" E	79.22'
C13	50.35'	300.00'	9°36'59"	S 41°05'31" E	50.29'
C14	26.74'	96.83'	15°49'25"	N 38°14'26" W	26.66'
C15	31.56'	100.00'	18°05'05"	S 39°37'23" E	31.43'
C16	47.94'	100.00'	27°27'56"	N 34°55'58" W	47.48'
C17	30.24'	50.00'	34°38'49"	S 38°31'24" E	29.78'
C18	126.31'	55.00'	131°34'53"	N 9°56'37" E	100.33'

LINE TABLE		
LINE	LENGTH	DIRECTION
L1	47.48'	S 88°52'14" W
L2	93.03'	N 11°42'01" W
L3	109.83'	N 69°57'44" W
L4	21.03'	N 49°36'02" W
L5	16.23'	S 80°16'13" W
L6	43.87'	S 88°22'34" E
L7	18.36'	S 45°30'52" E
L8	58.45'	S 30°34'51" E
L9	80.87'	S 48°39'56" E
L10	36.34'	S 21°12'00" E
L11	35.00'	S 55°50'49" E
L13	20.67'	S 45°54'00" E
L14	49.32'	S 29°25'39" W
L15	191.93'	S 55°48'48" W
L16	26.91'	S 76°11'12" E
L17	205.25'	N 55°48'48" E
L18	49.87'	N 29°25'39" E

LEGEND	
	BOUNDARY LINE
	LOT LINE
	SECTION LINE
	QUARTER SECTION LINE
	ADJOINER DEED LINES
	AREA TIE LINES
	STREET MONUMENTS
	FOUND REBAR WITH PLASTIC CAP STAMPED "NOLTE ASSOC."
	SET REBAR WITH PLASTIC CAP STAMPED "NOLTE ASSOC."
	EASEMENT



OWNER
SMHG PHASE 1, LLC
3632 N. WOLF CREEK DR.
EDEN, UT 84310

This section of ROW/ PUE needs to be dimensioned so that it is retractable without relying on the adjoining phases plat

Sheet 2 of 2

RECORDED #
STATE OF UTAH, COUNTY OF WEBER,
RECORDED AND FILED AT THE
REQUEST OF: _____
ENTRY NO: _____
DATE: _____ TIME: _____
BOOK: _____ PAGE: _____
FEE \$ _____
WEBER COUNTY RECORDER

N|V|5
NOLTE VERTICALFIVE
5217 SOUTH STATE STREET, SUITE 200 MURRAY, UT 84107
801.743.1300 TEL 801.743.0300 FAX WWW.NOLTE.COM