

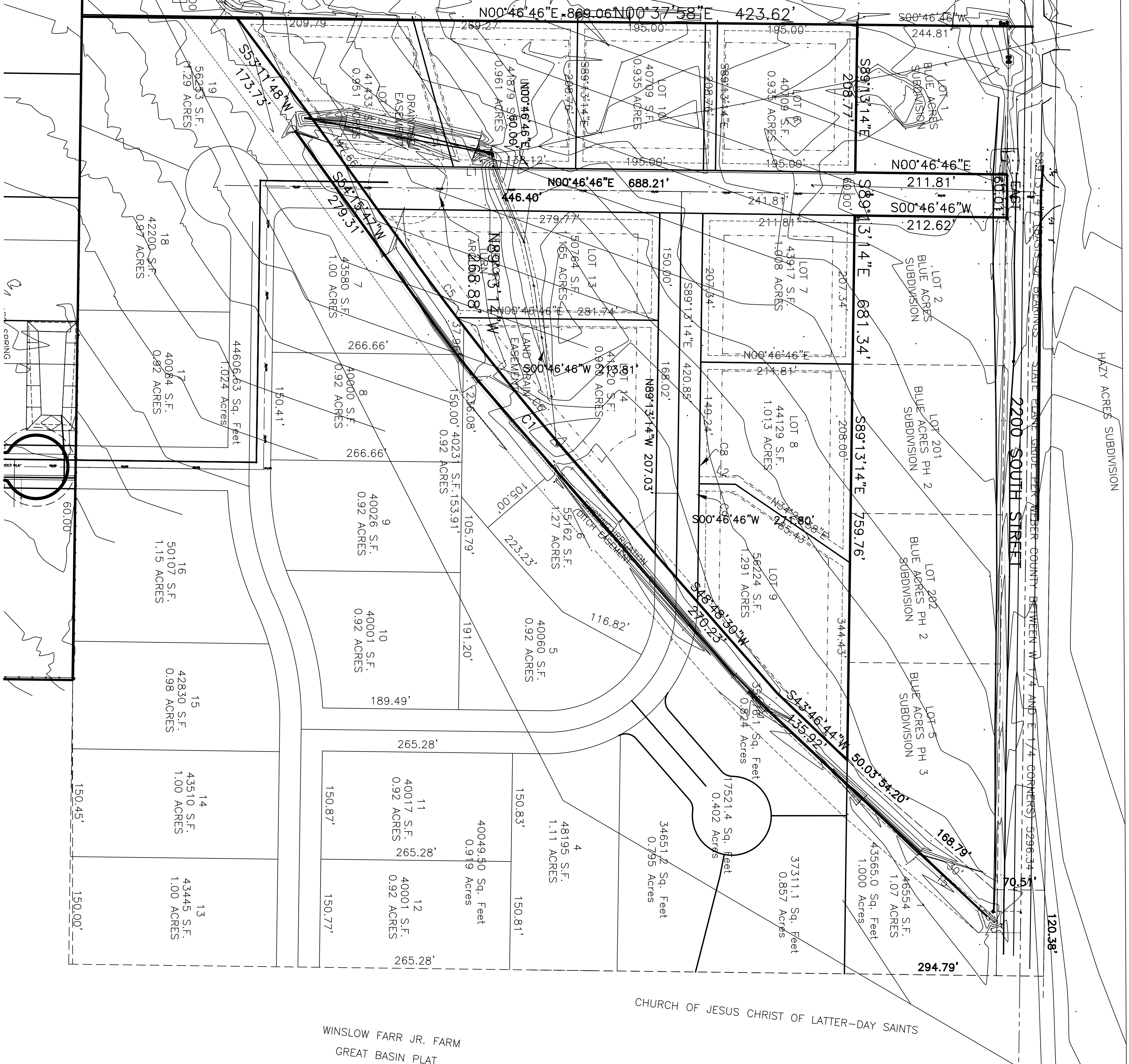
WEST QUARTER CORNER OF SECTION 28, TOWNSHIP 6 NORTH, RANGE 2 WEST, SALT LAKE BASE AND MERIDIAN, U.S. SURVEY, FOUND 3" BRASS-CLIP SET IN CONCRETE 3" BELOW ROAD SURFACE (1981)

**LEGEND**

- SECTION CORNER
- BOUNDARY LINE
- BOUNDARY SET BACK
- ADJOINING PROPERTY
- EASEMENTS
- SECTION/TIE LINE
- ROAD DEDICATION
- PUBLIC UTILITY EASEMENT

Scale: 1" = 100'

FOUR W.S. PARTNERSHIP



WINSLOW FARR JR. FARM  
GREAT BASIN PLAT

CHURCH OF JESUS CHRIST OF LATTER-DAY SAINTS