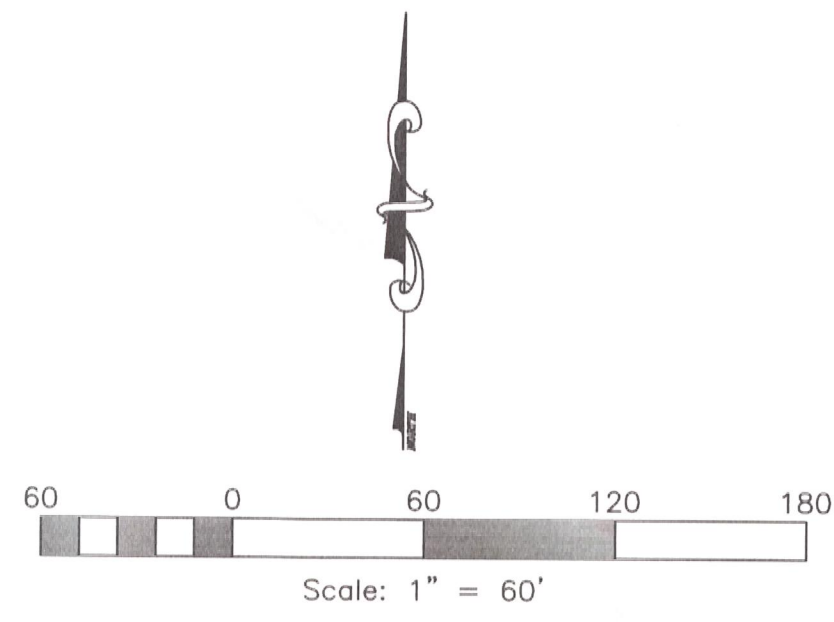
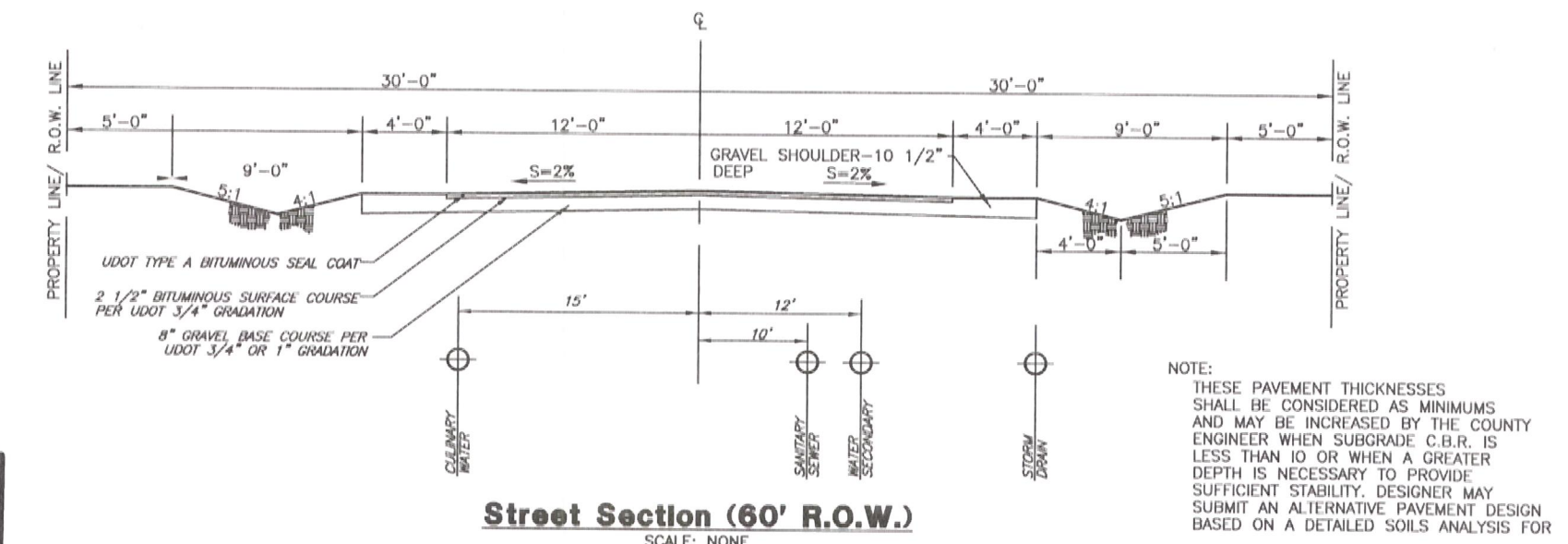
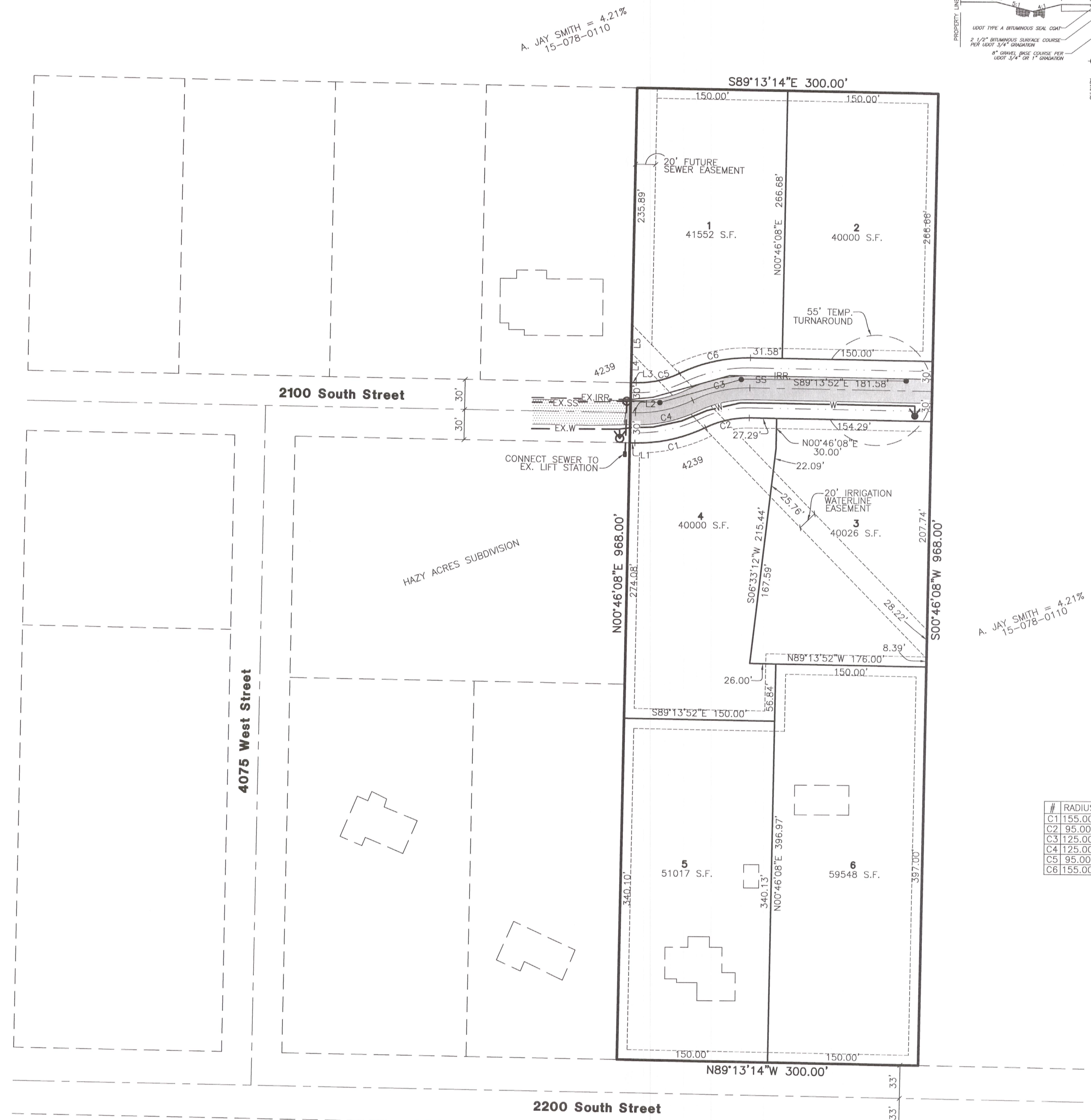


**Vicinity Map**  
SCALE: NONE



- Legend**
- SS = PROPOSED SANITARY SEWER LINE
  - EX.SS = EXISTING SANITARY SEWER LINE
  - IRR = PROPOSED IRRIGATION WATER LINE
  - EX.IRR = EXISTING IRRIGATION WATER LINE (SIZE VARIES)
  - W = PROPOSED CULINARY WATER LINE (SIZE VARIES)
  - EX.W = EXISTING CULINARY WATER LINE
  - SD = PROPOSED STORM DRAIN (SIZE VARIES)
  - EXIST SD = EXISTING STORM DRAIN
  - = PROPOSED FIRE HYDRANT
  - = PROPOSED SANITARY SEWER MANHOLE
  - = EXISTING SANITARY SEWER MANHOLE
  - [Hatched] = EXISTING ASPHALT SURFACE
  - [Solid Grey] = PROPOSED ASPHALT SURFACE
  - [Dashed] = EXISTING STRUCTURE



**Line Table**

LINE	BEARING	DISTANCE
L1	S89°12'58"E	5.16'
L2	N89°12'58"W	5.17'
L3	N89°12'58"W	5.18'
L4	N00°46'08"E	29.71'
L5	N00°46'08"E	28.22'

**Curve Table**

#	RADIUS	ARC LENGTH	CHD LENGTH	TANGENT	CHD BEARING	DELTA
C1	155.00'	72.89'	72.22'	37.13'	S77°18'43"W	26°56'38"
C2	95.00'	44.65'	44.24'	22.75'	S77°18'16"W	26°55'44"
C3	125.00'	58.75'	58.21'	29.93'	S77°18'16"W	26°55'44"
C4	125.00'	58.78'	58.24'	29.95'	N77°18'43"E	26°56'38"
C5	95.00'	44.67'	44.26'	22.76'	N77°18'43"E	26°56'38"
C6	155.00'	72.85'	72.18'	37.11'	S77°18'16"W	26°55'44"

# Russell Property

Weber County, Utah

**Developer:**  
Gabbard Homes  
Lonnie Gabbard  
4052 S. 5025 W.  
West Haven, UT. 84401  
(801) 390-1050

**Reeve & Associates, Inc.**  
1845 WEST 1000 SOUTH, SUITE 100, OGDEN, UTAH 84403  
TEL: (801) 390-1050 FAX: (801) 390-1050  
LAND ENGINEERS • CIVIL ENGINEERS • LAND SURVEYORS  
ARCHITECTS • STRUCTURAL ENGINEERS • LANDSCAPE ARCHITECTS

REVISIONS	DESCRIPTION

**Russell Property**  
PART OF THE NW 1/4 OF SECTION 28, T.6N., R.2W., S.L.B. & M., U.S. SURVEY  
WEBER COUNTY, UTAH

**Preliminary Plan**

**Project Info.**  
Engineer: N. Reeve  
Designer: C. Cove  
Begin Date: JUNE 1, 2015  
Name: RUSSELL PROPERTY  
Number: 6554-01

Sheet **1** of 1 Sheets

NOTES:  
1. CONTOURS ARE SHOWN WITH A ONE FOOT INTERVAL.  
THESE PLANS AND SPECIFICATIONS ARE THE PROPERTY OF REEVE & ASSOCIATES, INC., 920 CHAMBERS STREET, SUITE 14, OGDEN, UTAH 84403, AND SHALL NOT BE PHOTOCOPIED, RE-DRAWN, OR USED ON ANY PROJECT OTHER THAN THE PROJECT SPECIFICALLY DESIGNED FOR, WITHOUT THEIR WRITTEN PERMISSION. THE OWNERS AND ENGINEERS OF REEVE & ASSOCIATES, INC. DISCLAIM ANY LIABILITY FOR ANY CHANGES OR MODIFICATIONS MADE TO THESE PLANS OR THE DESIGN THEREON WITHOUT THEIR CONSENT.