

SCALE $\frac{1}{4} = 1$ FOOT

" Pole Barn "

Building Size 32' X 36' Barn

1152 sq FT

WALLS	SOUTH	27 -	
	NORTH	18 -	2x16
	EAST	25 -	8'
	WEST	25 -	5'
PARTITION	NORTH	8 -	2x6 - 16' } 8
		1 -	9' x 12' } 8
2nd Floor Posts	SOUTH	20 -	2" x 12" x 16' joist 16FT WITH LARK
	NORTH	20 -	2" x 12" x 16' joist 16FT OR 17FT
	EAST & WEST	46 -	TGI 5' FT.

Factory Roof Tiles
2 FT. OS.

26'-4"

46 - 2x4 x 12

6"

TGI
2' OS

18" OS

TGI

8' FT

1' FT

10' FT

5'

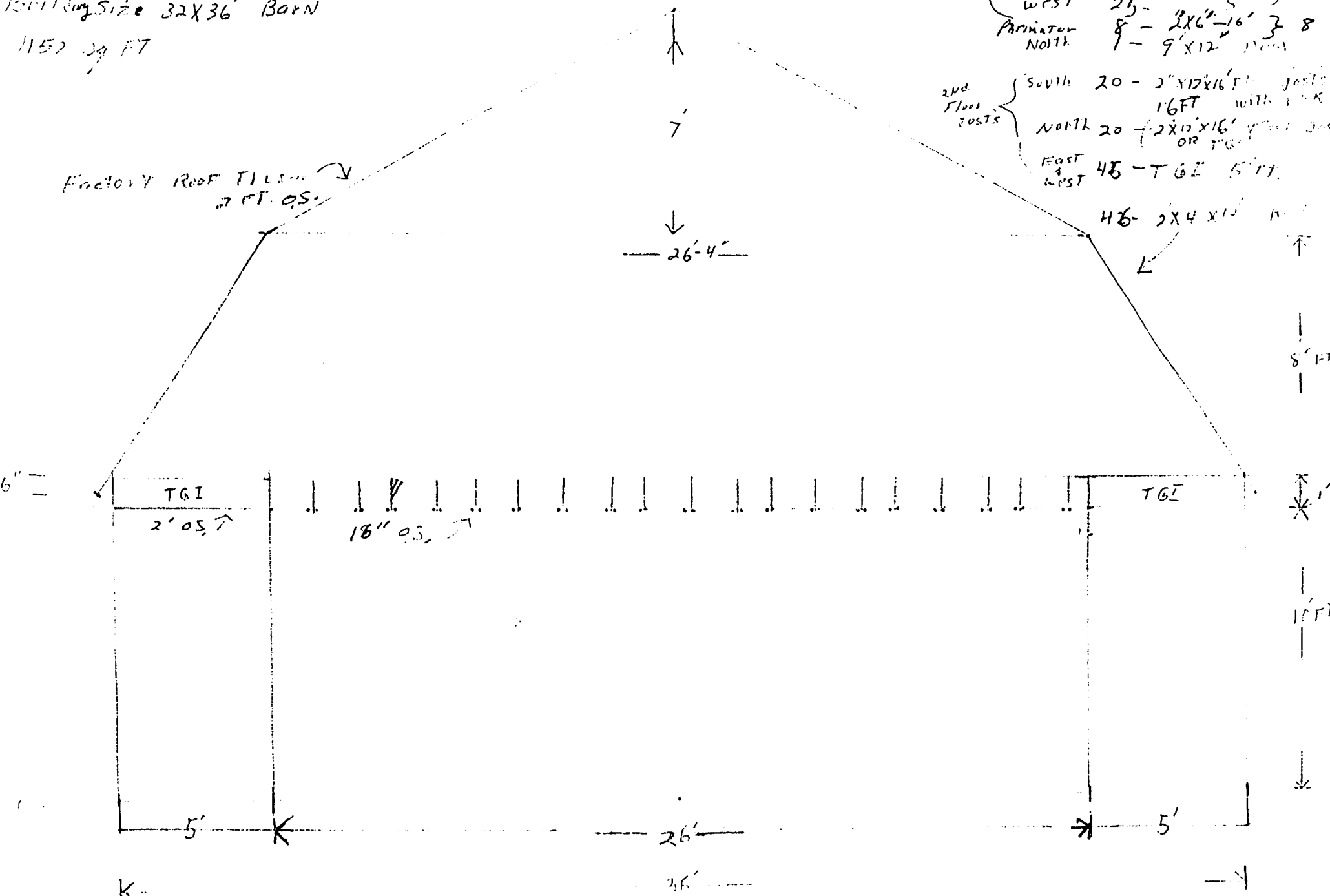
26'

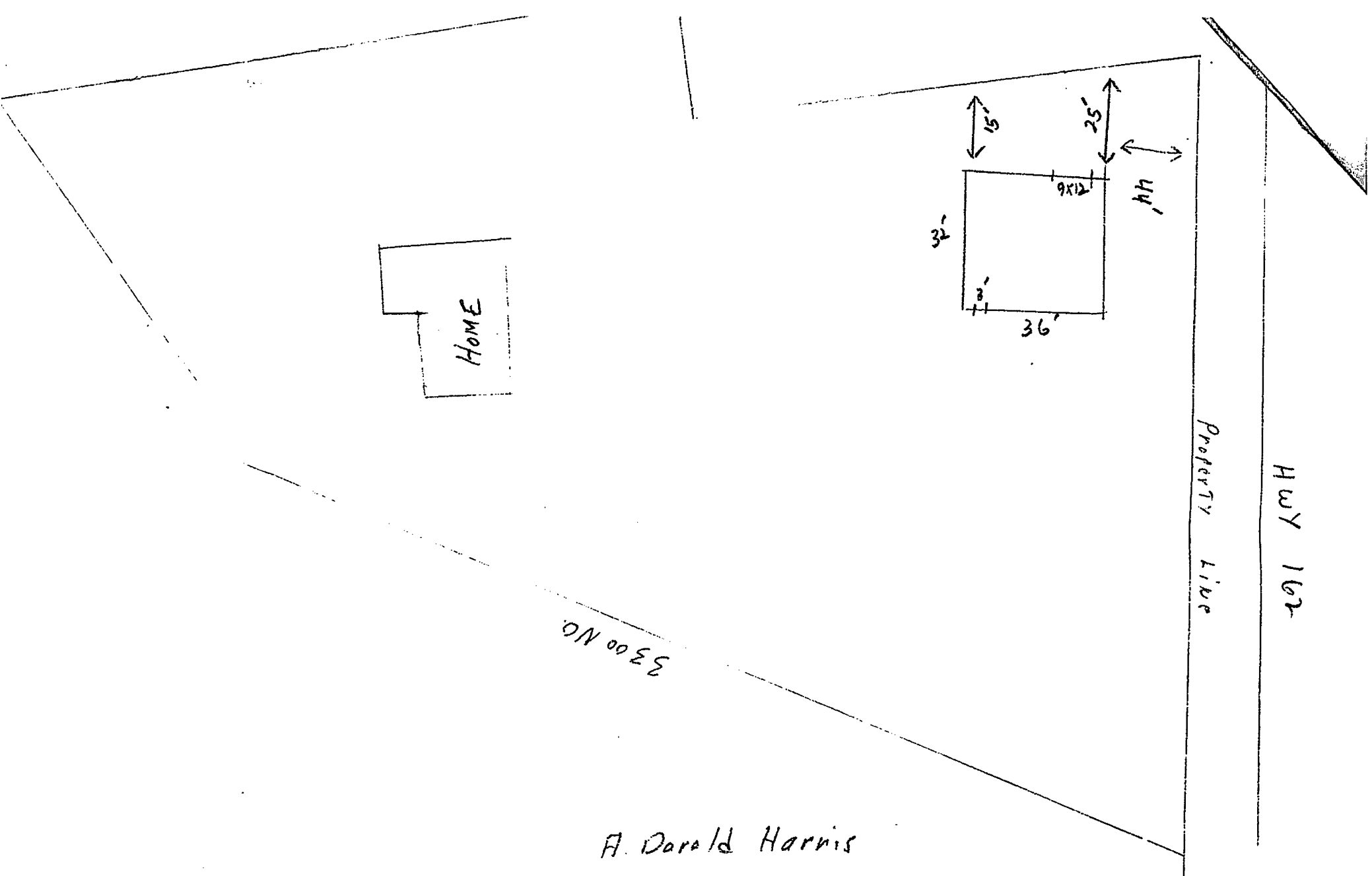
5'

K-

36'

-

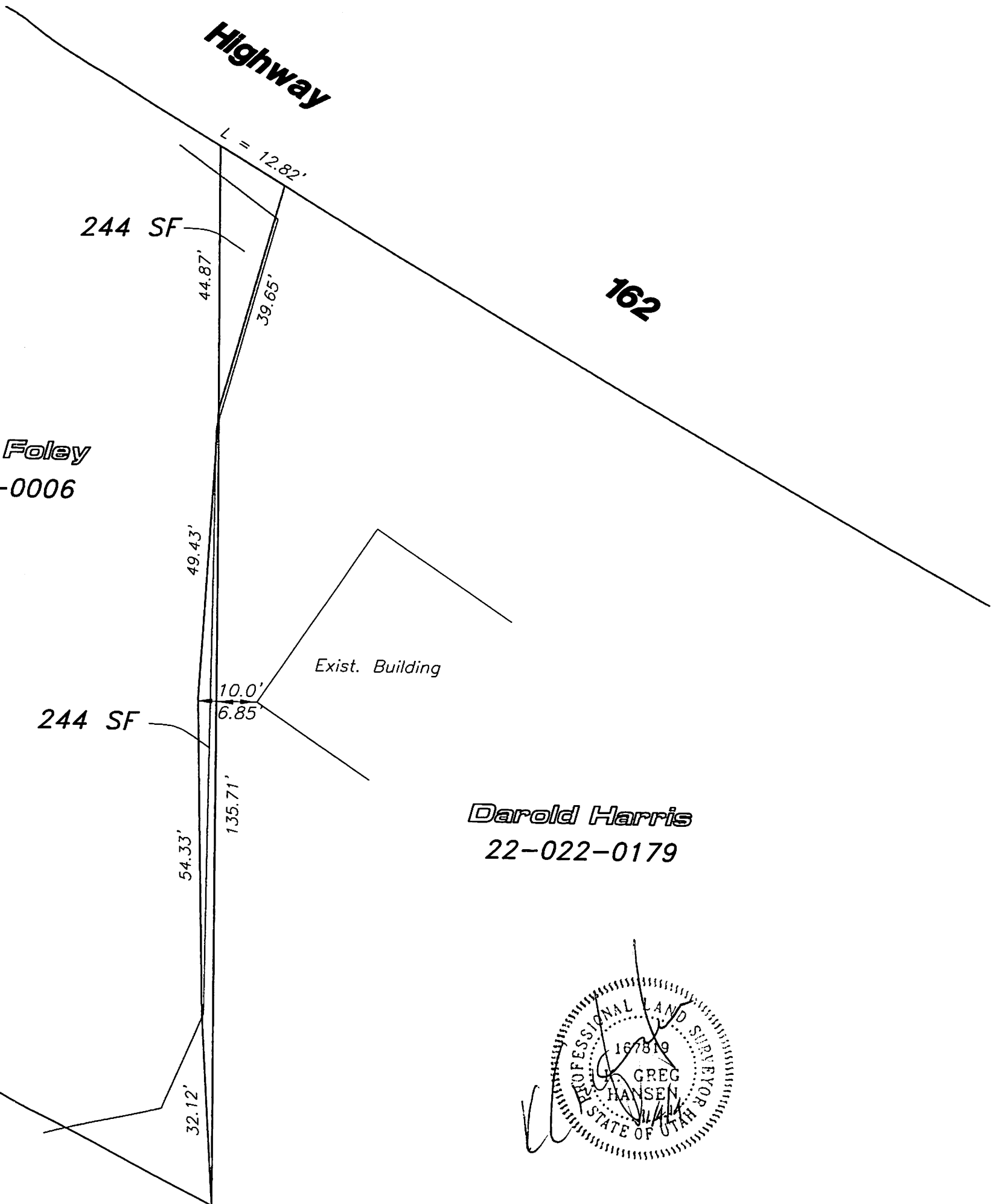
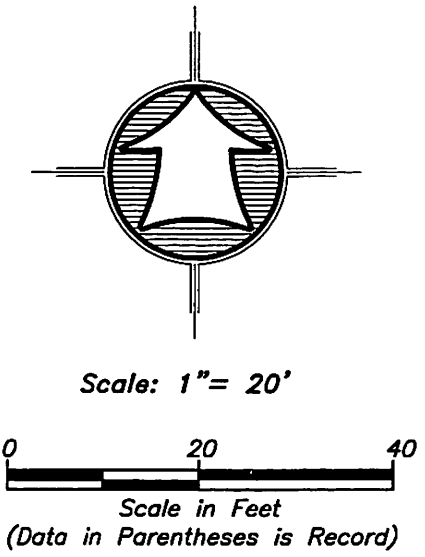




A. Darold Harris
3912 E 3300 NO.
Liberty UTAH 84310

The proposed parcel boundary adjustment has been reviewed and approved for compliance with applicable County and State Codes.

As Will:
Sean W. Wilkinson
Planning Director



Darold Harris
22-022-0179

