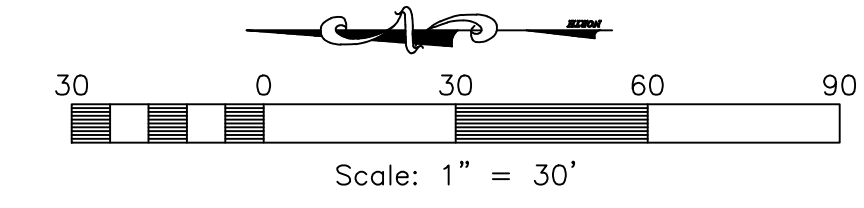
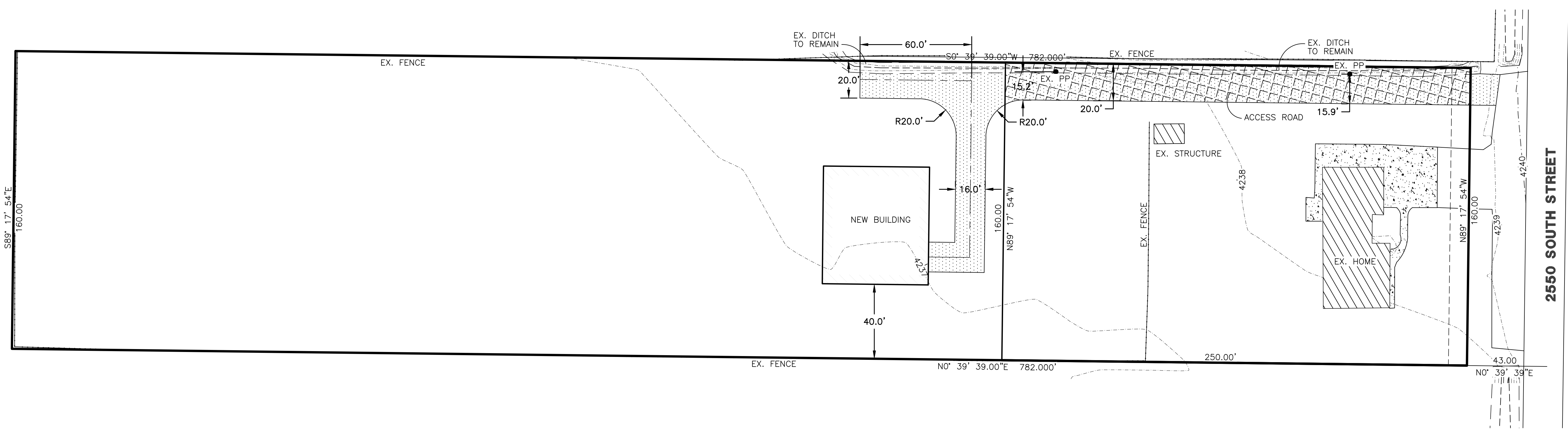


# DOYLE HESS SUBDIVISION

WEBER COUNTY, UTAH  
JUNE, 2015



Vicinity Map  
NOT TO SCALE



**LEGEND**

- = 20' PRIVATE RIGHT OF WAY
- = ACCESS ROAD  
6" GRAVEL ON COMPACTED ROAD BASE



**Engineer's Notice To Contractors**  
THE EXISTENCE AND LOCATION OF ANY UNDERGROUND UTILITY PIPES OR STRUCTURES SHOWN ON THESE PLANS WERE OBTAINED FROM AVAILABLE INFORMATION PROVIDED BY OTHERS. THE LOCATIONS SHOWN ARE APPROXIMATE AND SHALL BE CONFIRMED IN THE FIELD BY THE CONTRACTOR, SO THAT ANY NECESSARY ADJUSTMENT CAN BE MADE IN ALIGNMENT AND/OR GRADE OF THE PROPOSED IMPROVEMENT. THE CONTRACTOR IS REQUIRED TO CONTACT THE UTILITY COMPANIES AND TAKE DUE PRECAUTIONARY MEASURE TO PROTECT ANY UTILITY LINES SHOWN, AND ANY OTHER LINES OBTAINED BY THE CONTRACTOR'S RESEARCH, AND OTHERS NOT OF RECORD OR NOT SHOWN ON THESE PLANS.

**Developer Contact:**  
Doyle Hess  
PH: (801) 452-3565

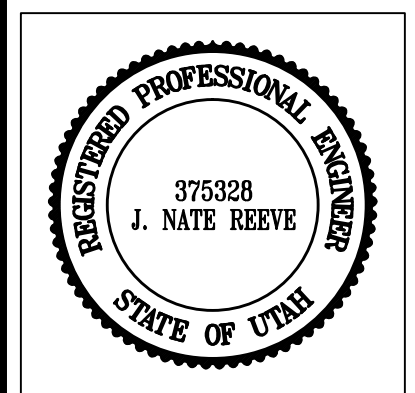
Blue Stakes Location Center  
**Call: Toll Free**  
**1-800-662-4111**  
Two Working Days Before You Dig

**Reeve & Associates, Inc.**  
920 CHAMBERS STREET, SUITE 14, OGDEN, UTAH 84403  
TEL: (801) 621-2100 FAX: (801) 621-2666 www.reeve-assoc.com  
LAND PLANNERS • CIVIL ENGINEERS • LAND SURVEYORS  
TRAFFIC ENGINEERS • STRUCTURAL ENGINEERS • LANDSCAPE ARCHITECTS

REVISIONS	DESCRIPTION

**Doyle Hess Subdivision**  
WEBER COUNTY, UTAH

**Cover/Index Sheet**



**Project Info.**

Engineer:	J. NATE REEVE
Drafter:	S. TAGGART
Begin Date:	JULY 14, 2015
Name:	DOYLE HESS SUBDIVISION
Number:	6561-01

Sheet	<b>1</b>
<b>1</b>	Sheets