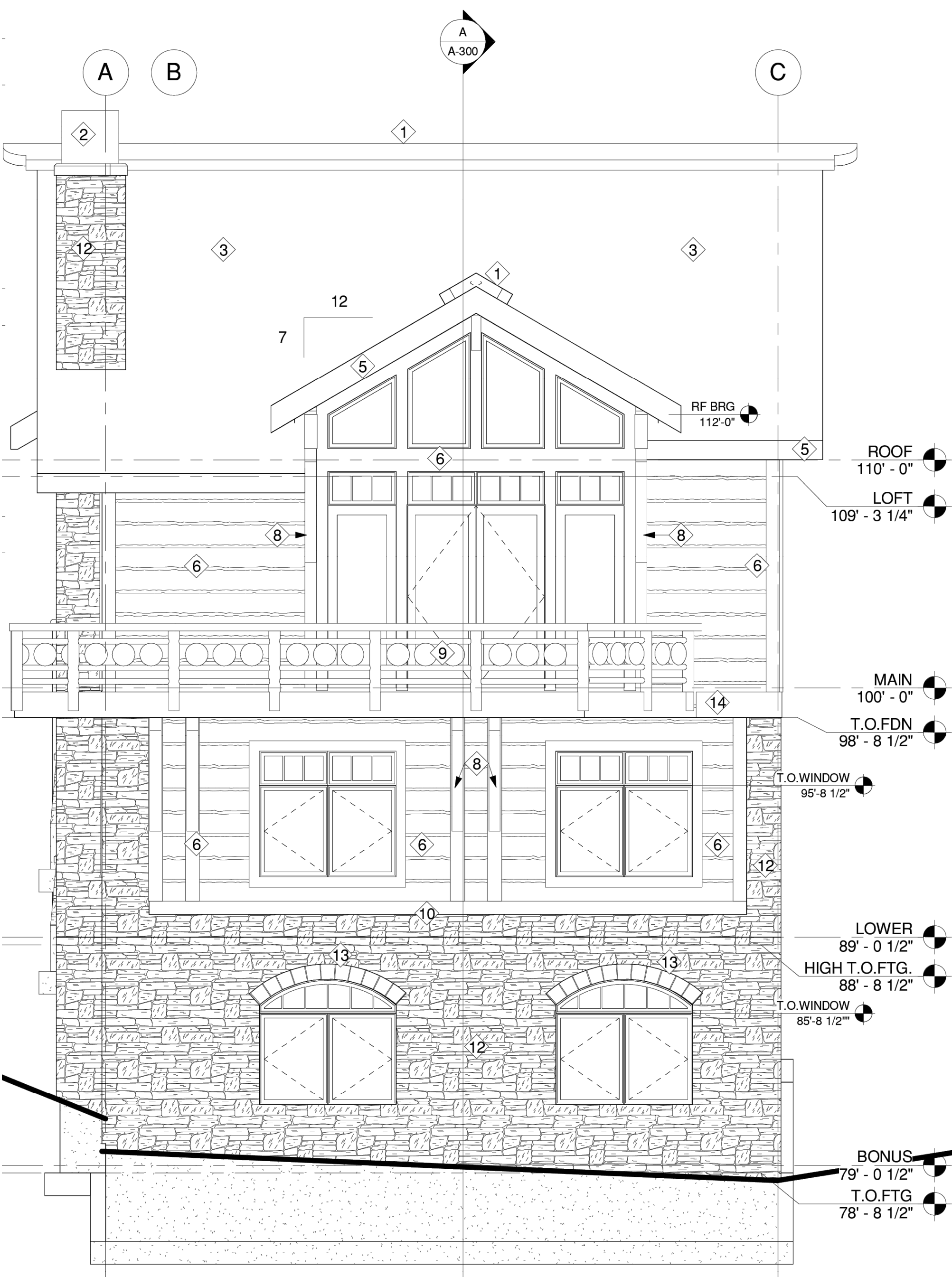


SUNDOWN CONDOMINIUMS - PHASE 3
A UTAH CONDOMINIUM PROJECT
LOCATED IN THE NORTHEAST QUARTER OF SECTION 1,
TOWNSHIP 7 NORTH, RANGE 1 EAST, SALT LAKE BASE AND MERIDIAN,
WEBER COUNTY, UTAH



1 SOUTH ELEVATION
1/4" = 1'-0"



2 WEST ELEVATION
1/4" = 1'-0"

C:\USERS\WILLIAMSON\WORK\ITEMS 2020-2022\SUNDOWN CONDOS - POWDER MOUNTAIN\SUNDOWN CONDOMINIUMS PLAT PHASE 3.DWG

DEVELOPER: GUY WILLIAMS gwilliams@fawkesconsultants.com	S2 2	COUNTY RECORDER
ENTRY NO. _____ FEE PAID _____		FILED FOR AND RECORDED _____
AT _____, IN BOOK _____ OF OFFICIAL		RECORDS, PAGE _____ RECORDED
FOR _____		COUNTY RECORDER
BY: _____		

LAYTON SURVEYS LLC
Professional Land Surveying
837 S. 500 W., STE. 201
(801) 663-1641 willis.long@laytonsurveys.com WOODS CROSS, UT 84010