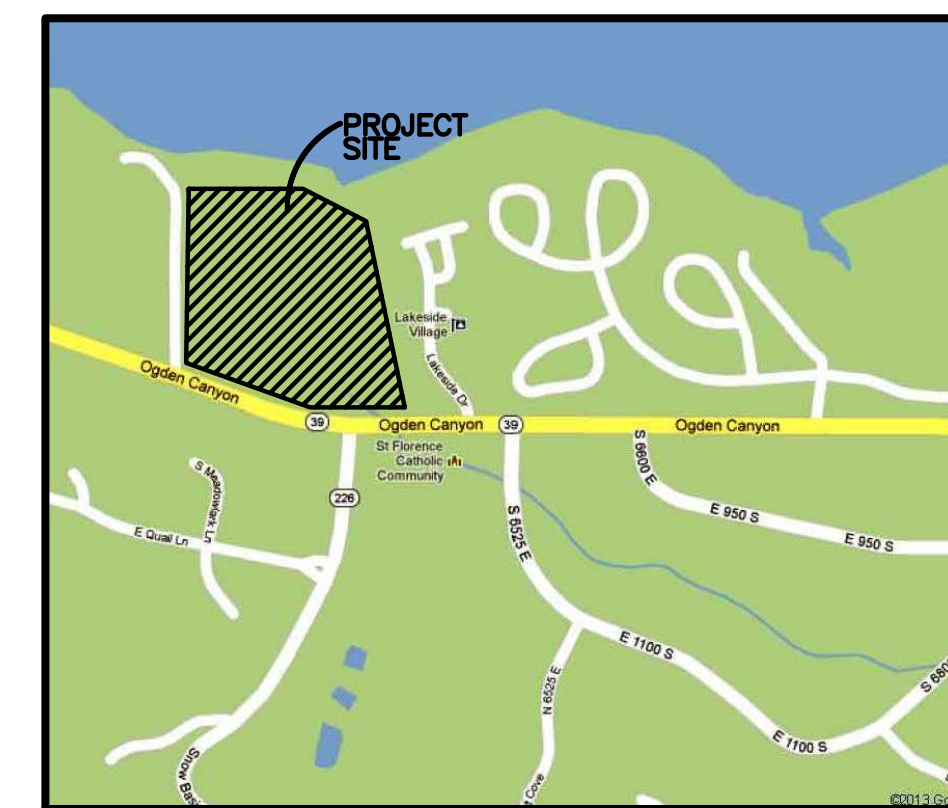


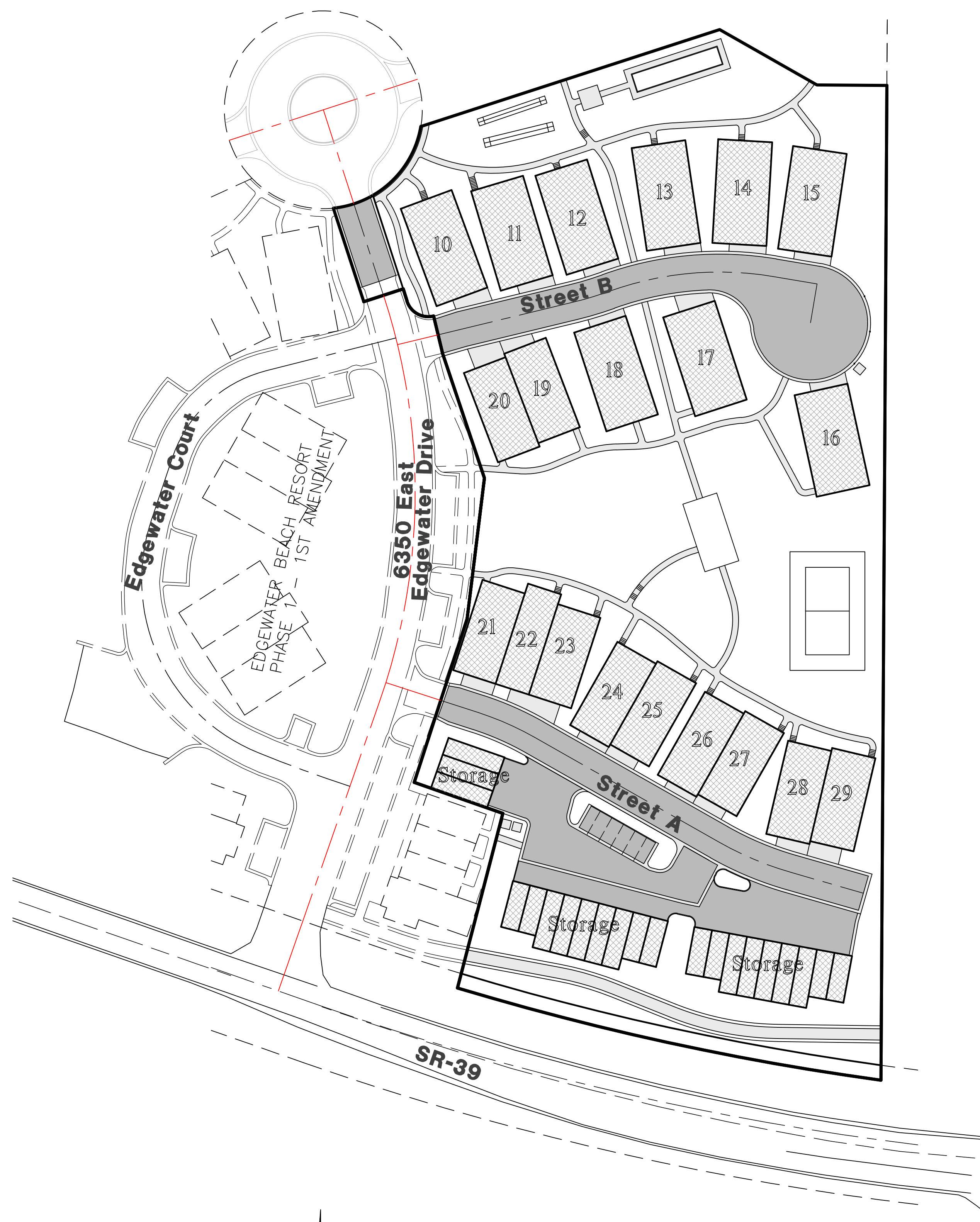
EDGEWATER BEACH RESORT

Phase-2 Improvement Plans

WEBER COUNTY, UTAH
MARCH 2015

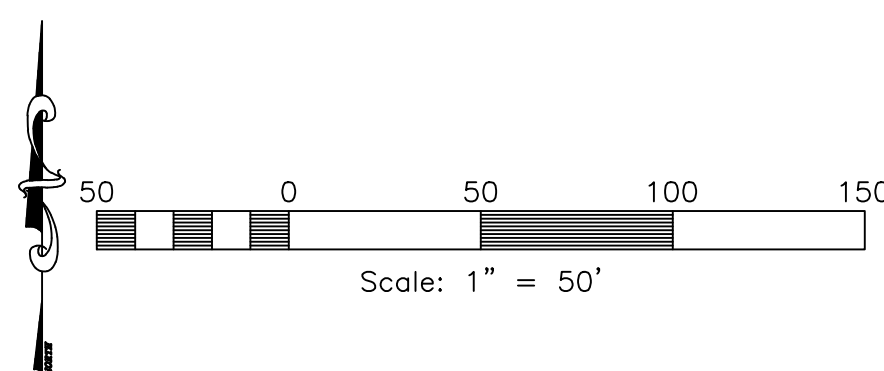


Vicinity Map
NOT TO SCALE



Sheet Index

- Sheet 1 - Cover/Index Sheet
- Sheet 2 - Notes & Legend Sheet
- Sheet 3 - Street A 10+50.00-14+50.00
- Sheet 4 - Street B 12+00.00-16+00.00
- Sheet 5 - Grading Plan
- Sheet 6 - Utility Plan
- Sheet 7 - Utility Plan
- Sheet 8 - Civil Details
- Sheet 9 - Storm Water Pollution Prevention Plan Exhibit
- Sheet 10 - Storm Water Pollution Prevention Plan Details
- Sheet 11 - Landscape Plan
- Sheet 12 - Landscape Details



Elevation Datum

SITE BENCHMARK:
BENCH MARK MONUMENT NO. 3-JRH
ELEVATION 4969.025

Engineer's Notice To Contractors

THE EXISTENCE AND LOCATION OF ANY UNDERGROUND UTILITY PIPES OR STRUCTURES SHOWN ON THESE PLANS WERE OBTAINED FROM AVAILABLE INFORMATION PROVIDED BY OTHERS. THE LOCATIONS SHOWN ARE APPROXIMATE AND SHALL BE CONFIRMED IN THE FIELD BY THE CONTRACTOR, SO THAT ANY NECESSARY ADJUSTMENT CAN BE MADE IN ALIGNMENT AND/OR GRADE OF THE PROPOSED IMPROVEMENT. THE CONTRACTOR IS REQUIRED TO CONTACT THE UTILITY COMPANIES AND TAKE DUE PRECAUTIONARY MEASURE TO PROTECT ANY UTILITY LINES SHOWN, AND ANY OTHER LINES OBTAINED BY THE CONTRACTOR'S RESEARCH, AND OTHERS NOT OF RECORD OR NOT SHOWN ON THESE PLANS.

Developer Contact:

Dan Ross
Jack Fisher Homes
1148 W. Legacy Crossing
Centerville, UT 84014
PH: (801) 335-8500

Blue Stakes Location Center

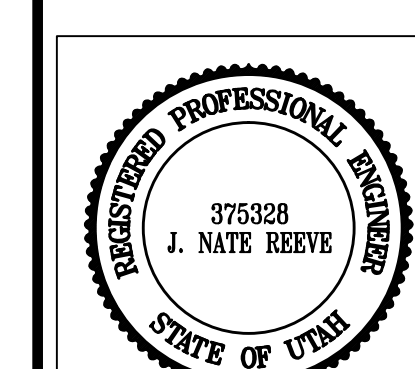
Call: Toll Free
1-800-662-4111
Two Working Days Before You Dig

Reeve & Associates, Inc.
920 CHAMBERS STREET, SUITE 14, OGDEN, UTAH 84403
TEL: (801) 621-2100 FAX: (801) 621-2666 WWW.REEVE-ASSOC.COM
LAND PLANNERS • CIVIL ENGINEERS • LAND SURVEYORS
TRAFFIC ENGINEERS • STRUCTURAL ENGINEERS • LANDSCAPE ARCHITECTS

REVISIONS	DESCRIPTION
DATE	

Edgewater Beach Resort
Phase-2
WEBER COUNTY, UTAH

Cover/Index Sheet



Project Info.

Engineer:	J. NATE REEVE, P.E.
Drafter:	R. HANSEN
Begin Date:	MARCH 2, 2015
Name:	EDGEWATER BEACH RESORT PHASE-2
Number:	6240-03

Sheet	12
1	Sheets