

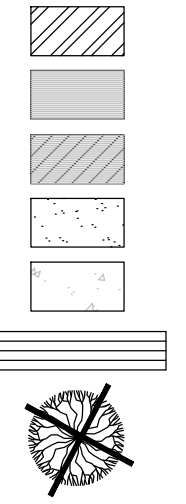
3500 West Street

San. Sewer Manhole
Water Manhole
Storm Drain Manhole
Cleanout
Electrical Manhole
Catch Basins
Exist. Fire Hydrant
Fire Hydrant
Exist. Water Valve
Water Valve
Sanitary Sewer
Culinary Water
Gas Line
Irrigation Line
Storm Drain
Telephone Line
Secondary Waterline
Power Line
Fire Line
Land Drain
Power pole
Power pole w/guy
Light Pole
Fence
Flowline of ditch
Overhead Power line

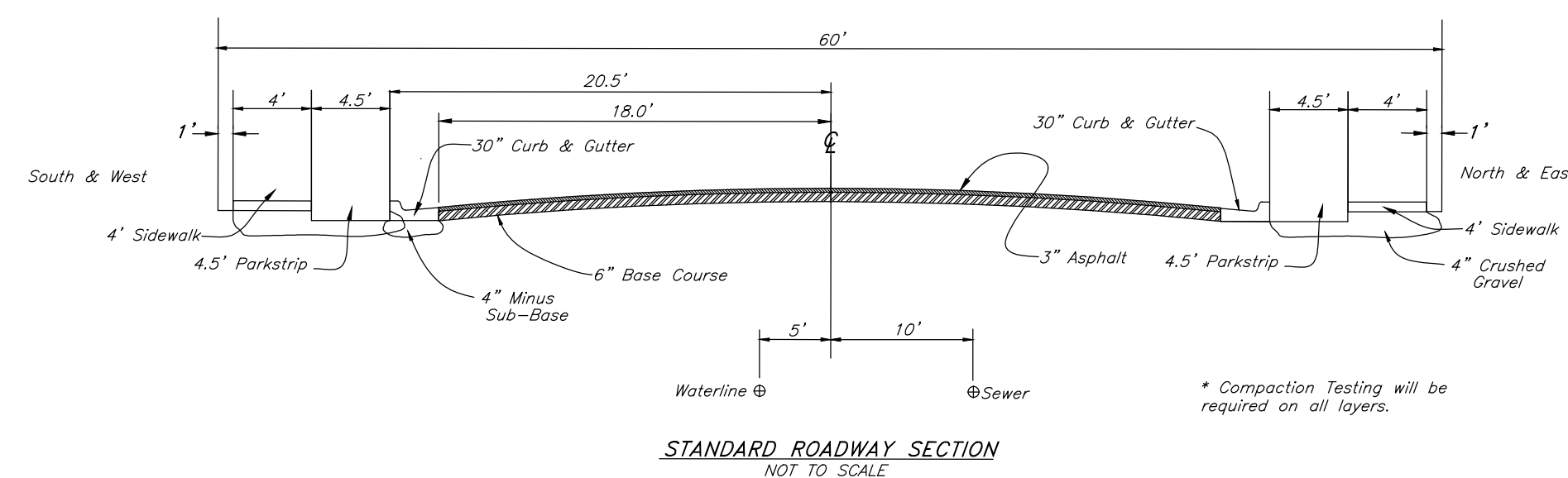
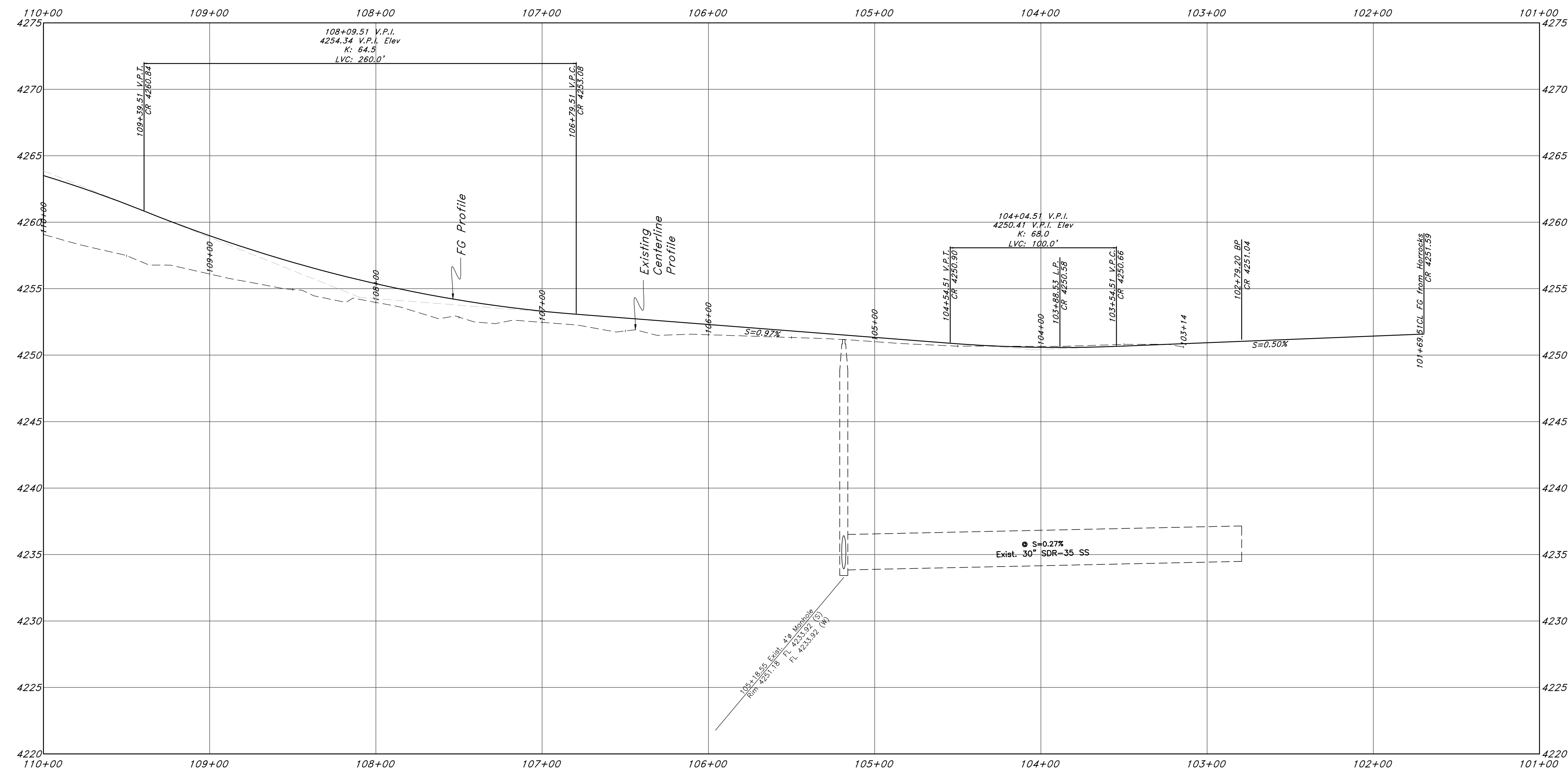
(Note: All Items may not appear on drawing)

Corrugated Metal Pipe	CMP
Concrete Pipe	CP
Reinforced Concrete Pipe	RCP
Urethane Pipe	UP
Polystyrene Pipe	PS
Top of Asphalt	EA
Edge of Asphalt	EL
Centerline	CL
Flowline	FL
Finish Floor	FF
Top of Curb	TC
Top of Wall	TW
Top of Walk	FW
Top of Concrete	TCN
Natural Ground	NG
Finish Grade	FG
Match Existing	ME
Fire Department Connection	FDC
Finish Contour	— 90 —
Exist. Contour	— 90 —
Finish Grade	95.3714
Exist. Grade	95.7214
Ridge Line	R

Existing Asphalt
New Asphalt
Heavy Duty Asphalt
Existing Concrete
New Concrete
Spill Curb & Gutter
Demo Tree



Coordinate with Weber County on Construction Requirements for 3500 West Street.



- GENERAL NOTES:**
1. All construction must meet or exceed Weber County Standards.
 2. Culinary Water services will be extended 10' beyond Right-of-way line and Centered in Lots.
 3. Sanitary Sewer will be extended 10' beyond the Right-of-way line 10.0' on the Downhill side of the Center of Lots.
 4. Saw Cut Existing Asphalt to provide a smooth clean edge.
 5. Contractor responsible to loop pressurized utility lines to maintain separation between pipes and cover over top of pipe from finished grade.

Call before you Dig
Avoid cutting underground utility lines. It's costly.

**Call
811**

1-800-862-4111

Plan & Profile

Winslow Far Jr. Farm - Phase 1
2200 South 3500 West

Weber County, Utah
A part of Section 28, T6N. R2W, SLB&M, U.S. Survey

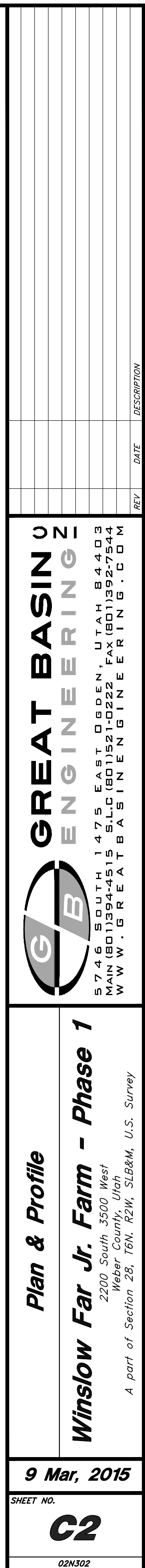
9 Mar, 2015

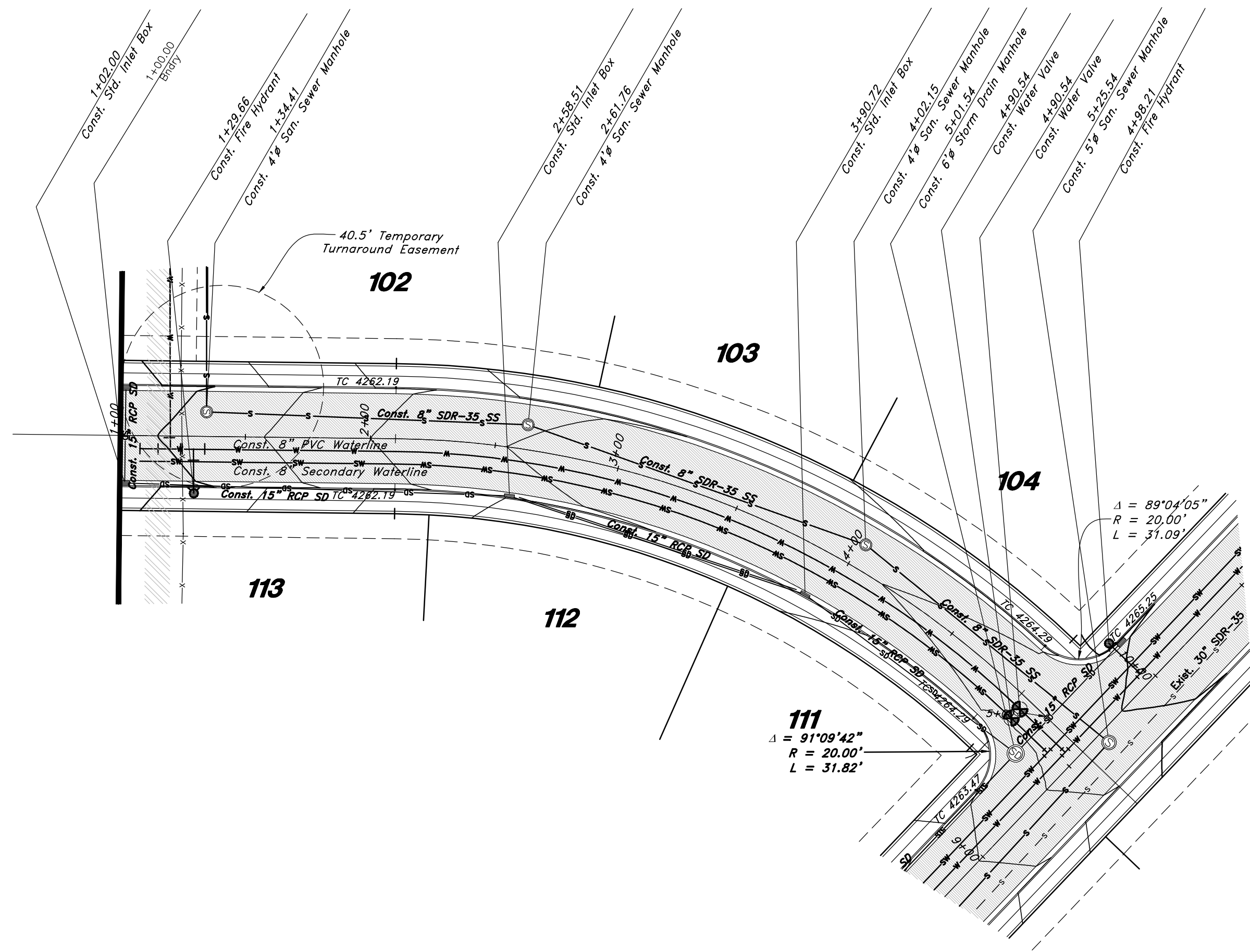
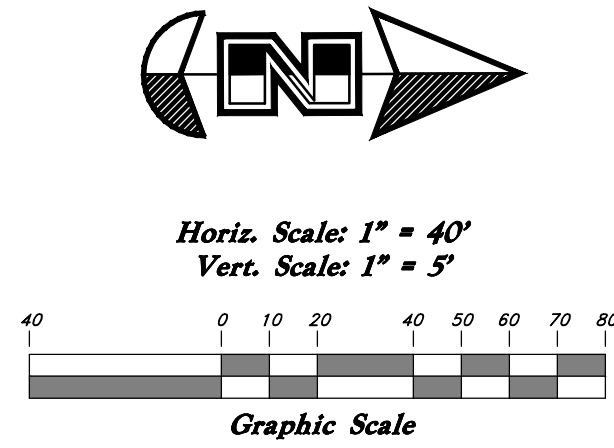
SHEET NO.

C1

02N302

TENTATIVE FINAL





- San. Sewer Manhole
Water Manhole
Storm Drain Manhole
Cleanout
Electrical Manhole
Catch Basins
Exist. Fire Hydrant
Fire Hydrant
Exist. Water Valve
Water Valve
Sanitary Sewer
Culinary Water
Gas Line
Irrigation Line
Storm Drain
Telephone Line
Secondary Waterline
Power Line
Fire Line
Land Drain
Power pole
Power pole w/guy
Light Pole
Fence
Flowline of ditch
Overhead Power line

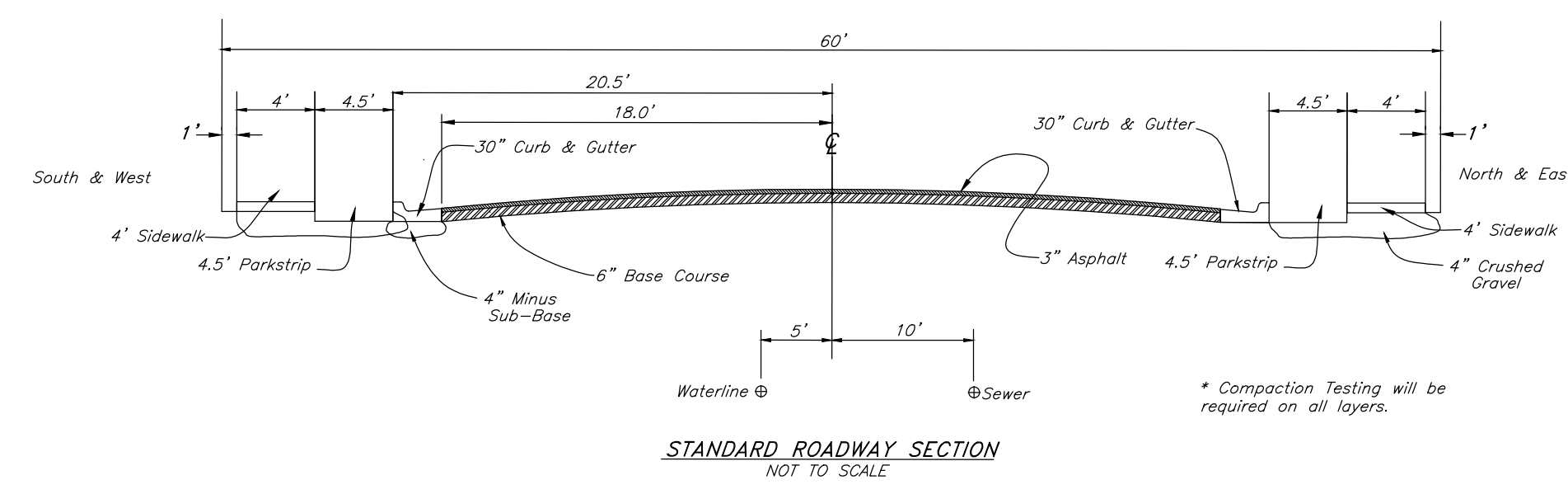
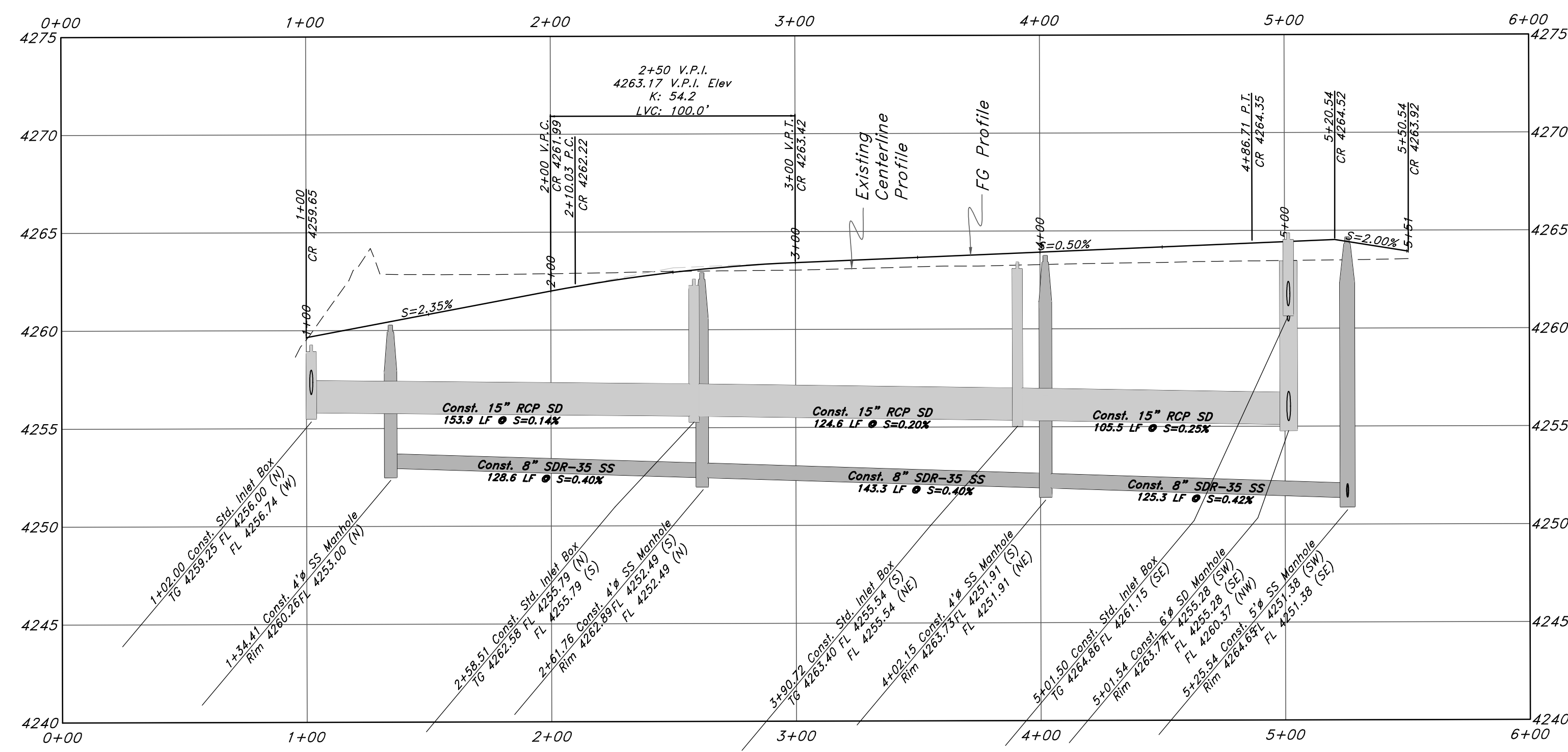
Legend

(Note: All items may not appear on drawing)

- Corrugated Metal Pipe
Concrete Pipe
Reinforced Concrete Pipe
Ductile Iron
Polyvinyl Chloride
Top of Asphalt
Edge of Asphalt
Centerline
Flowline
Finish Floor
Top of Curb
Top of Wall
Top of Walk
Top of Concrete
Natural Ground
Finish Grade
Match Existing
Fire Department Connection
Finish Contour
Exist. Contour
Exist. Grade
Ridge Line

- Existing Asphalt
New Asphalt
Heavy Duty Asphalt
Existing Concrete
New Concrete
Spill Curb & Gutter
Demo Tree

3600 West Street



- GENERAL NOTES:**
- All construction must meet or exceed Weber County Standards.
 - Culinary Water services will be extended 10' beyond Right-of-way line and Centered in Lots.
 - Sanitary Sewer will be extended 10' beyond the Right-of-way line 10.0' on the Downhill side of the Center of Lots.
 - Saw Cut Existing Asphalt to provide a smooth clean edge.
 - Contractor responsible to loop pressurized utility lines to maintain separation between pipes and cover over top of pipe from finished grade.



TENTATIVE FINAL

GREAT BASIN ENGINEERING

5746 SOUTH 1475 EAST, OGDEN, UTAH 84403
MAIN 801.994.4515 FAX 801.992.7544
WWW.GREATBASINENGINEERING.COM

Plan & Profile

Winslow Far Jr. Farm - Phase 1

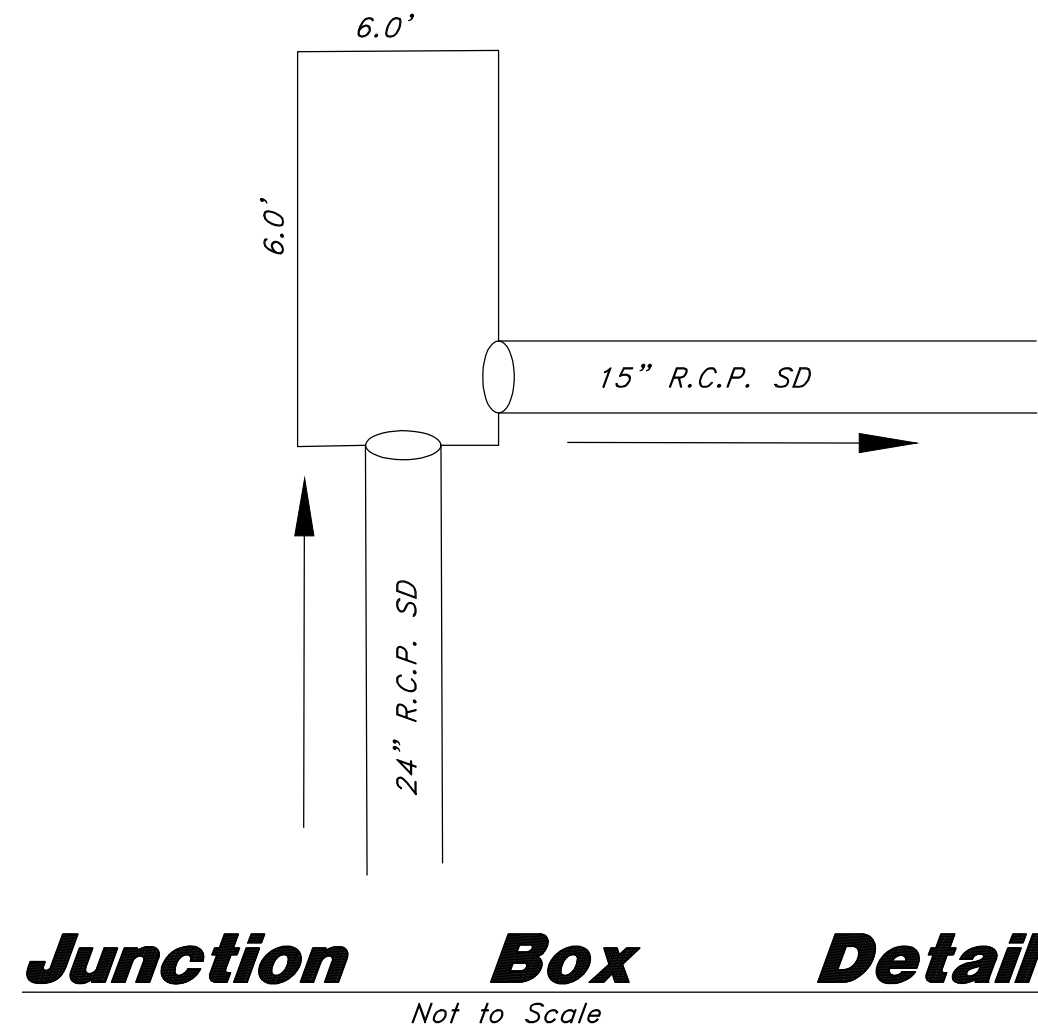
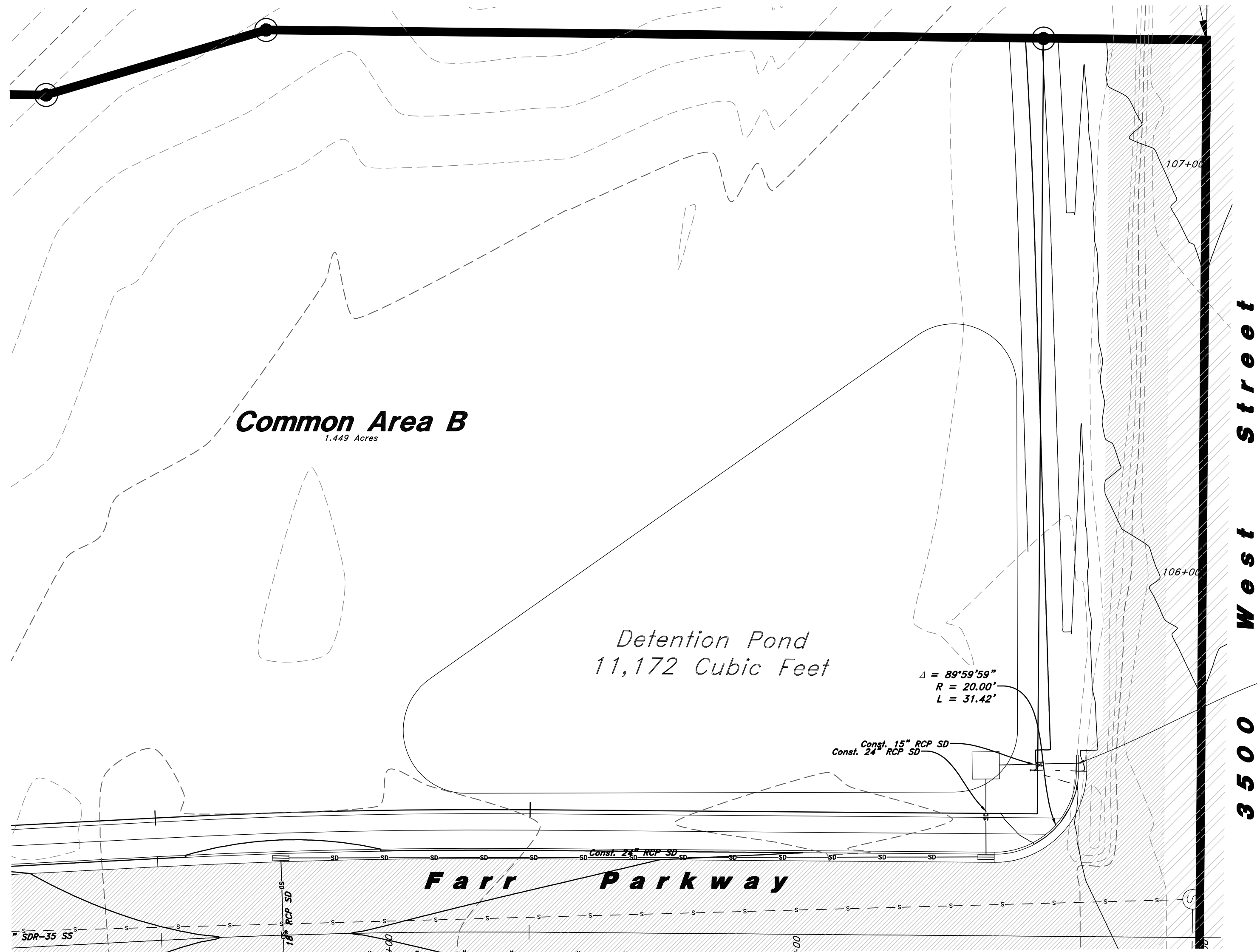
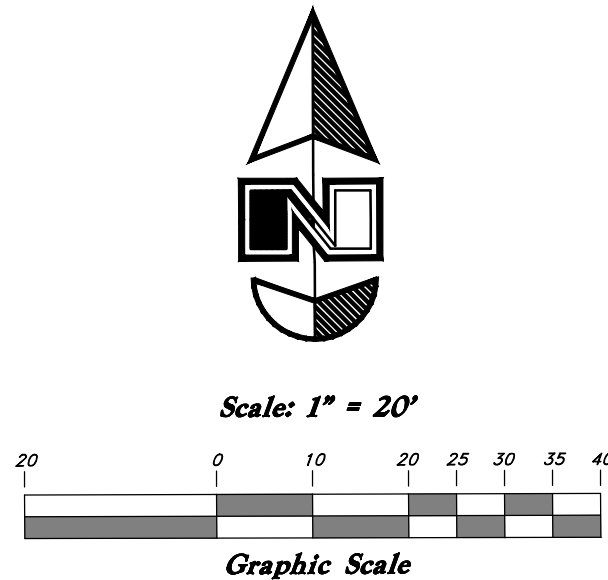
2200 South 3500 West
Weber County, Utah
A part of Section 28, T6N, R2W, SL&M, U.S. Survey

9 Mar, 2015

SHEET NO.

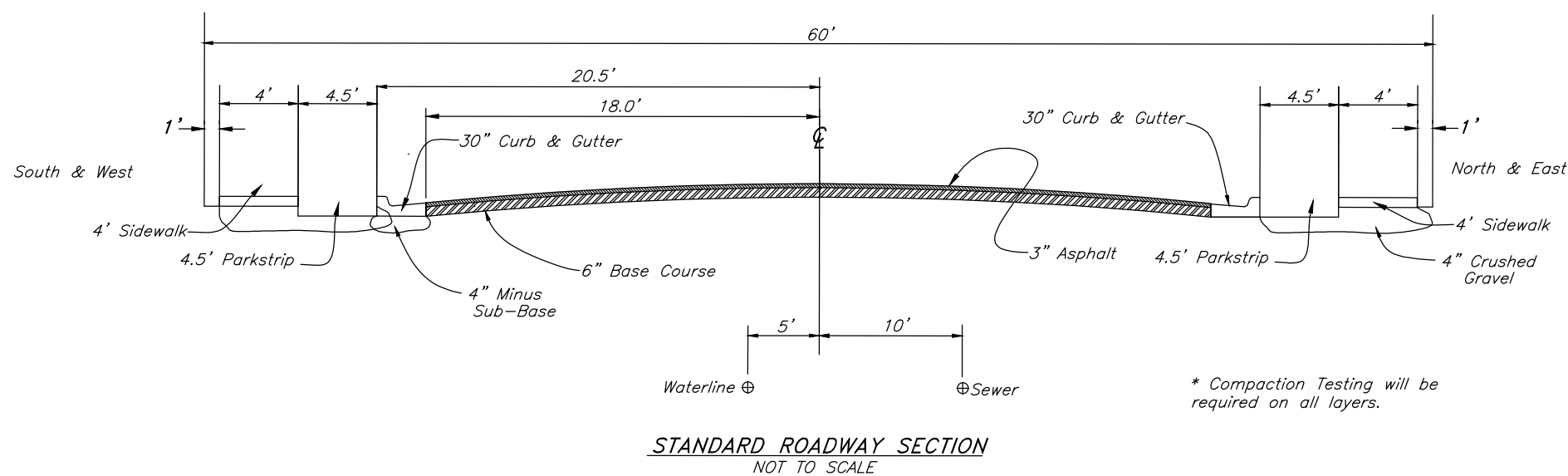
C3

02N302



Detention Pond Detail

- GENERAL NOTES:**
- All construction must meet or exceed Weber County Standards.
 - Culinary Water services will be extended 10' beyond Right-of-way line and Centered in Lots.
 - Sanitary Sewer will be extended 10' beyond the Right-of-way line 10.0' on the Downhill side of the Center of Lots.
 - Saw Cut Existing Asphalt to provide a smooth clean edge.
 - Contractor responsible to loop pressurized utility lines to maintain separation between pipes and cover over top of pipe from finished grade.



- San. Sewer Manhole
Water Manhole
Storm Drain Manhole
Cleanout
Electrical Manhole
Catch Basins
Exist. Fire Hydrant
Exist. Water Valve
Water Valve
Sanitary Sewer
Culinary Water
Gas Line
Irrigation Line
Storm Drain
Telephone Line
Secondary Waterline
Power Line
Fire Line
Land Drain
Power pole
Power pole w/guy
Light Pole
Fence
Flowline of ditch
Overhead Power line

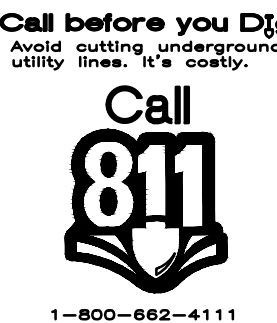
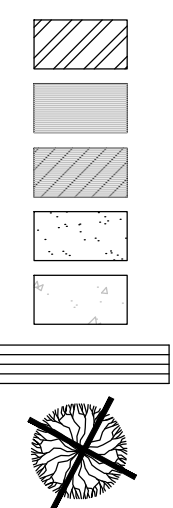


Legend

(Note: All items may not appear on drawing)

- Corrugated Metal Pipe
Concrete Pipe
Reinforced Concrete Pipe
Ductile Iron
Polyvinyl Chloride
Top of Asphalt
Edge of Asphalt
Centerline
Flowline
Finish Floor
Top of Curb
Top of Wall
Top of Walk
Top of Concrete
Natural Ground
Finish Grade
Match Existing
Fire Department Connection
Finish Contour
Exist. Contour
Finish Grade
Exist. Grade
Ridge Line

- Existing Asphalt
New Asphalt
Heavy Duty Asphalt
Existing Concrete
New Concrete
Spill Curb & Gutter
Demo Tree



Detention Pond Detail

Winslow Far Jr. Farm - Phase 1
2200 South 3500 West
Weber County, Utah
A part of Section 28, T6N, R2W, SL&M, U.S. Survey

9 Mar, 2015

SHEET NO. **C4**

02N302

GREAT BASIN ENGINEERING

5746 SOUTH 1475 EAST, Ogden, Utah 84403
MAIN 8019445155, CELL 80152110222, FAX 8019927544
WWW.GREATBASINENGINEERING.COM

REV	DATE	DESCRIPTION