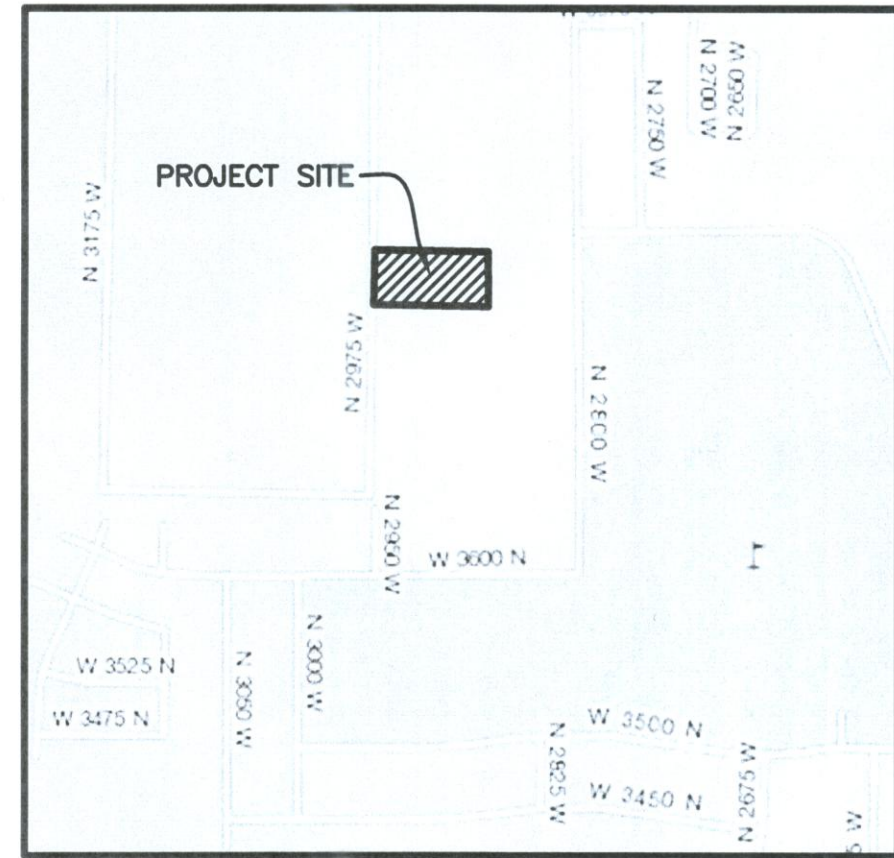


# ORTBERG SUBDIVISION

PART OF THE NORTHEAST QUARTER OF SECTION 22, TOWNSHIP 7 NORTH, RANGE 2 WEST, SALT LAKE BASE AND MERIDIAN, U.S. SURVEY  
WEBER COUNTY, UTAH  
MARCH, 2015



VICINITY MAP  
NO SCALE

## BASIS OF BEARINGS

THE BASIS OF BEARINGS FOR THIS PLAT IS THE SECTION LINE BETWEEN A FOUND WEBER COUNTY 3" BRASS CAP MONUMENT AT THE NORTHEAST CORNER AND A FOUND WEBER COUNTY 3" BRASS CAP MONUMENT AT THE NORTH QUARTER CORNER OF SECTION 22, TOWNSHIP 7 NORTH, RANGE 2 WEST, SALT LAKE BASE AND MERIDIAN, U.S. SURVEY, SHOWN HEREON AS N89°40'08"W.

## NARRATIVE

THE PURPOSE OF THIS PLAT IS TO CREATE A ONE LOT SUBDIVISION. BOUNDARY CORNERS WERE SET WITH A 5/8" REBAR AND PLASTIC CAP STAMPED "REEVE & ASSOCIATES". THE SOUTH AND EAST BOUNDARIES WERE FIXED BY THE ADJOINING SUBDIVISION AND MATCHED EXISTING OCCUPATION. THE NORTH BOUNDARY WAS FIXED BY DEED, WHICH MATCHES OCCUPATION. THE CENTERLINE OF 2975 WEST STREET WAS DETERMINED BY EXTENDING THE LINE USED BY J & L NELSON SUBDIVISION 1ST AMENDMENT, AS RECORDED WITH THE WEBER COUNTY RECORDER.

## BOUNDARY DESCRIPTION

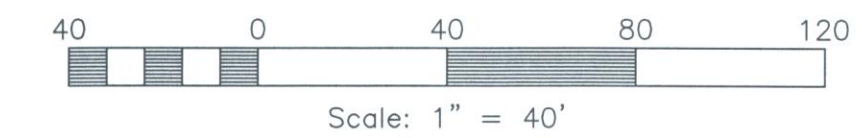
PART OF THE NORTHEAST QUARTER OF SECTION 22, TOWNSHIP 7 NORTH, RANGE 2 WEST, SALT LAKE BASE AND MERIDIAN, U.S. SURVEY, DESCRIBED AS FOLLOWS:

BEGINNING AT A POINT ON THE WEST LINE OF REMUDA SUBDIVISION AND GOLF COURSE PHASE 1, SAID POINT BEING N89°40'08"W ALONG THE SECTION LINE 1090.59 FEET AND S00°19'52"W 1516.30 FEET FROM THE NORTHEAST CORNER OF SAID SECTION 22; THENCE S00°15'00"E ALONG SAID WEST LINE OF REMUDA SUBDIVISION AND GOLF COURSE PHASE 1 327.50 FEET TO THE NORTH LINE OF J & L NELSON SUBDIVISION 1ST AMENDMENT; THENCE N89°02'28"W ALONG SAID NORTH LINE OF J & L NELSON SUBDIVISION 1ST AMENDMENT 681.87 FEET TO THE CENTERLINE OF 2975 WEST STREET (A PRIVATE ROAD); THENCE N00°57'32"E ALONG SAID CENTERLINE 327.43 FEET TO THE SOUTH LINE OF THE GOUGH PROPERTY; THENCE S89°02'28"E ALONG SAID SOUTH LINE OF THE GOUGH PROPERTY 674.97 FEET TO THE WEST LINE OF SAID REMUDA SUBDIVISION AND GOLF COURSE PHASE 1 ALSO THE POINT OF BEGINNING.

CONTAINING 222,134 SQUARE FEET, 5.099 ACRES

## LEGEND

- = SECTION CORNER
- = SET 5/8" X 24" REBAR AND PLASTIC CAP STAMPED "REEVE & ASSOCIATES"
- = FOUND REBAR & CAP MARKED "REEVE & ASSOCIATES"
- = BOUNDARY LINE
- = ADJOINING PROPERTY
- = EASEMENTS
- = SECTION TIE LINE
- = ROAD CENTERLINE
- = EXISTING FENCELINE
- = EXISTING DITCH
- = PRIVATE STREET EASEMENT
- = EXISTING STRUCTURE
- = PUBLIC UTILITY EASEMENT



## SURVEYOR'S CERTIFICATE

I, ROBERT D. KUNZ, DO HEREBY CERTIFY THAT I AM A PROFESSIONAL LAND SURVEYOR, AND THAT I HOLD LICENSE NO. 150228, AS PRESCRIBED UNDER LAWS OF THE STATE OF UTAH. I FURTHER CERTIFY THAT BY AUTHORITY OF THE OWNERS, I HAVE MADE A SURVEY OF THE TRACT OF LAND SHOWN ON THIS PLAT AND DESCRIBED HEREON, AND HAVE SUBDIVIDED SAID TRACT OF LAND INTO LOTS AND STREETS, TOGETHER WITH EASEMENTS, HEREAFTER TO BE KNOWN AS ORTBERG SUBDIVISION IN WEBER COUNTY, UTAH, AND THAT THE SAME HAS BEEN CORRECTLY SURVEYED AND MONUMENTED ON THE GROUND AS SHOWN ON THIS PLAT.

SIGNED THIS \_\_\_\_\_ DAY OF \_\_\_\_\_, 20\_\_\_\_.

150228  
UTAH LICENSE NUMBER ROBERT D. KUNZ



## OWNERS DEDICATION AND CERTIFICATION

WE THE UNDERSIGNED OWNERS OF THE HEREIN DESCRIBED TRACT OF LAND, DO HEREBY SET APART AND SUBDIVIDE THE SAME INTO LOTS AND STREETS (PRIVATE STREETS, PRIVATE RIGHTS-OF-WAY) AS SHOWN ON THE PLAT AND NAME SAID TRACT ORTBERG SUBDIVISION, AND DO HEREBY DEDICATE AND RESERVE UNTO THEMSELVES, THEIR HEIRS, THEIR GRANTEEES AND ASSIGNS, A RIGHT-OF-WAY TO BE USED IN COMMON WITH ALL OTHERS WITHIN SAID SUBDIVISION (AND THOSE ADJOINING SUBDIVISIONS THAT MAY BE SUBDIVIDED BY THE UNDERSIGNED OWNERS, THEIR SUCCESSORS, OR ASSIGNS) ON, OVER AND ACROSS ALL THOSE PORTIONS OR PARTS OF SAID TRACT OF LAND DESIGNATED ON SAID PLAT AS PRIVATE STREET (PRIVATE RIGHTS-OF-WAY) AS ACCESS TO THE INDIVIDUAL LOTS, TO BE MAINTAINED BY A LOT (UNIT) OWNERS ASSOCIATION WHOSE MEMBERSHIP CONSISTS OF SAID OWNERS, THEIR GRANTEEES, SUCCESSOR, OR ASSIGNS AND ALSO TO GRANT AND DEDICATE A PERPETUAL RIGHT AND EASEMENT OVER, UPON AND UNDER THE LANDS DESIGNATED HEREON AS PUBLIC UTILITY, STORM WATER DETENTION PONDS DRAINAGE EASEMENTS AND CANAL MAINTENANCE EASEMENT, THE SAME TO BE USED FOR THE INSTALLATION MAINTENANCE AND OPERATION OF PUBLIC UTILITY SERVICE LINE, STORM DRAINAGE FACILITIES, IRRIGATION CANALS OR FOR THE PERPETUAL PRESERVATION OF WATER CHANNELS IN THEIR NATURAL STATE WHICHEVER IS APPLICABLE AS MAY BE AUTHORIZED BY THE GOVERNING AUTHORITY, WITH NO BUILDINGS OR STRUCTURES BEING ERECTED WITHIN SUCH EASEMENTS

SIGNED THIS \_\_\_\_\_ DAY OF \_\_\_\_\_, 20\_\_\_\_.

JAMES ORTBERG  
JEANNINE K. ORTBERG

## ACKNOWLEDGMENT

STATE OF UTAH )  
COUNTY OF \_\_\_\_\_ ) ss.  
ON THE \_\_\_\_\_ DAY OF \_\_\_\_\_, 20\_\_\_\_, PERSONALLY APPEARED BEFORE ME, THE UNDERSIGNED NOTARY PUBLIC, \_\_\_\_\_ (AND) \_\_\_\_\_ SIGNERS OF THE ABOVE OWNER'S DEDICATION AND CERTIFICATION, WHO BEING BY ME DULY SWORN, DID ACKNOWLEDGE TO ME \_\_\_\_\_ SIGNED IT FREELY, VOLUNTARILY, AND FOR THE PURPOSES THEREIN MENTIONED.

COMMISSION EXPIRES \_\_\_\_\_ NOTARY PUBLIC \_\_\_\_\_

## ACKNOWLEDGMENT

STATE OF UTAH )  
COUNTY OF \_\_\_\_\_ ) ss.  
ON THE \_\_\_\_\_ DAY OF \_\_\_\_\_, 20\_\_\_\_, PERSONALLY APPEARED BEFORE ME, THE UNDERSIGNED NOTARY PUBLIC, \_\_\_\_\_ (AND) \_\_\_\_\_ BEING BY ME DULY SWORN, ACKNOWLEDGED TO ME THEY ARE \_\_\_\_\_ AND \_\_\_\_\_ OF SAID CORPORATION AND THAT THEY SIGNED THE ABOVE OWNER'S DEDICATION AND CERTIFICATION FREELY, VOLUNTARILY, AND IN BEHALF OF SAID CORPORATION FOR THE PURPOSES THEREIN MENTIONED.

COMMISSION EXPIRES \_\_\_\_\_ NOTARY PUBLIC \_\_\_\_\_

## Project Info.

Surveyor: R. KUNZ  
Designer: E. ROCHE  
Begin Date: 02-27-15  
Name: ORTBERG SUBDIVISION  
Number: 6475-01  
Revision:  
Scale: 1"=40'  
Checked:



**Reeve & Associates, Inc.**  
4155 S. HARRISON BLVD., SUITE 310, OGDEN, UTAH 84403  
TEL: (801) 621-3100 FAX: (801) 621-2666 www.reeve-associ.com

## NOTE

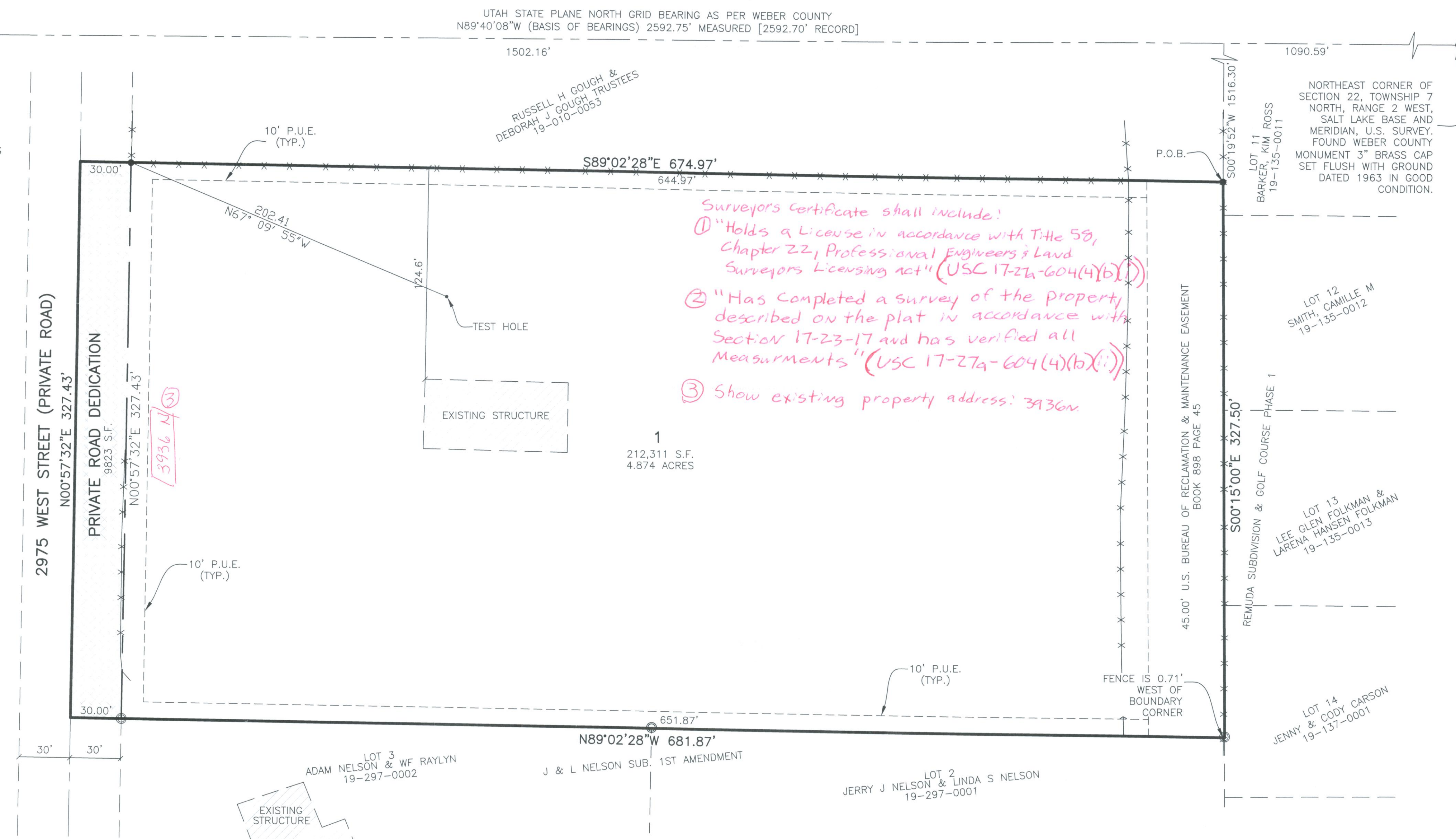
ALL U.S. BUREAU OF RECLAMATION EASEMENTS WILL BECOME WEBER COUNTY DRAINAGE EASEMENTS AT THE SAME TIME WHEN THE U.S. BUREAU OF RECLAMATION EITHER ABANDONS OR SHARES THE DRAINS WITH WEBER COUNTY, AND/OR OTHER GOVERNING AUTHORITIES.

## A-1 ZONE NOTE

AGRICULTURE IS THE PREFERRED USE IN THE AGRICULTURAL ZONES. AGRICULTURAL OPERATIONS AS SPECIFIED IN THE ZONING ORDINANCE FOR A PARTICULAR ZONE ARE PERMITTED AT ANY TIME INCLUDING THE OPERATION OF FARM MACHINERY AND NO ALLOWED AGRICULTURAL USE SHALL BE SUBJECT TO RESTRICTION ON THE BASIS THAT IT INTERFERES WITH ACTIVITIES OF FUTURE RESIDENTS OF THIS SUBDIVISION. (AMD. ORD. #3-82, JANUARY 26, 1982)

## DEVELOPER

JIM ORTBERG  
1170 WEST 700 SOUTH  
CLEARFIELD, UTAH 84015  
801-682-6598



## WEBER COUNTY PLANNING COMMISSION APPROVAL

THIS IS TO CERTIFY THAT THIS SUBDIVISION PLAT WAS DULY APPROVED BY THE WEBER COUNTY PLANNING COMMISSION. SIGNED THIS \_\_\_\_\_ DAY OF \_\_\_\_\_, 20\_\_\_\_.

CHAIRMAN, WEBER COUNTY PLANNING COMMISSION

## WEBER COUNTY ENGINEER

I HEREBY CERTIFY THAT THE REQUIRED PUBLIC IMPROVEMENT STANDARDS AND DRAWINGS FOR THIS SUBDIVISION CONFORM WITH THE COUNTY STANDARDS AND THE AMOUNT OF THE FINANCIAL GUARANTEE IS SUFFICIENT FOR THE INSTALLATION OF THESE IMPROVEMENTS.

WEBER COUNTY ENGINEER

## WEBER COUNTY COMMISSION ACCEPTANCE

THIS IS TO CERTIFY THAT THIS SUBDIVISION PLAT, THE DEDICATION OF STREETS AND OTHER PUBLIC WAYS AND FINANCIAL GUARANTEE OF PUBLIC IMPROVEMENTS ASSOCIATED WITH THIS SUBDIVISION, THEREON ARE HEREBY APPROVED AND ACCEPTED BY THE COMMISSIONERS OF WEBER COUNTY, UTAH. SIGNED THIS \_\_\_\_\_ DAY OF \_\_\_\_\_, 20\_\_\_\_.

CHAIRMAN, WEBER COUNTY COMMISSION

ATTEST

## WEBER COUNTY SURVEYOR

I HEREBY CERTIFY THAT THE WEBER COUNTY SURVEYOR'S OFFICE HAS REVIEWED THIS PLAT FOR MATHEMATICAL CORRECTNESS, SECTION CORNER DATA, AND FOR HARMONY WITH LINES AND MONUMENTS ON RECORD IN COUNTY OFFICES. THE APPROVAL OF THIS PLAT BY THE WEBER COUNTY SURVEYOR DOES NOT RELIEVE THE LICENSED LAND SURVEYOR WHO EXECUTED THIS PLAT FROM THE RESPONSIBILITIES AND/OR LIABILITIES ASSOCIATED THEREWITH. SIGNED THIS \_\_\_\_\_ DAY OF \_\_\_\_\_, 20\_\_\_\_.

WEBER COUNTY SURVEYOR

## WEBER COUNTY ATTORNEY

I HAVE EXAMINED THE FINANCIAL GUARANTEE AND OTHER DOCUMENTS ASSOCIATED WITH THIS SUBDIVISION PLAT, AND IN MY OPINION THEY CONFORM WITH THE COUNTY ORDINANCE APPLICABLE THERETO AND NOW IN FORCE AND AFFECT. SIGNED THIS \_\_\_\_\_ DAY OF \_\_\_\_\_, 20\_\_\_\_.

WEBER COUNTY ATTORNEY

## WEBER-MORGAN HEALTH DEPARTMENT

I HEREBY CERTIFY THAT THE SOILS, PERCOLATION RATES, AND SITE CONDITIONS FOR THIS SUBDIVISION HAVE BEEN INVESTIGATED BY THIS OFFICE AND ARE APPROVED FOR ON-SITE WASTEWATER DISPOSAL SYSTEMS. SIGNED THIS \_\_\_\_\_ DAY OF \_\_\_\_\_, 20\_\_\_\_.

WEBER-MORGAN HEALTH DEPARTMENT

## Weber County Recorder

Entry No. \_\_\_\_\_ Fee Paid \_\_\_\_\_  
Filed For Record \_\_\_\_\_  
And Recorded, \_\_\_\_\_  
At \_\_\_\_\_ In Book \_\_\_\_\_  
Of The Official Records, Page \_\_\_\_\_  
Recorded For: \_\_\_\_\_  
Weber County Recorder \_\_\_\_\_  
Deputy: \_\_\_\_\_