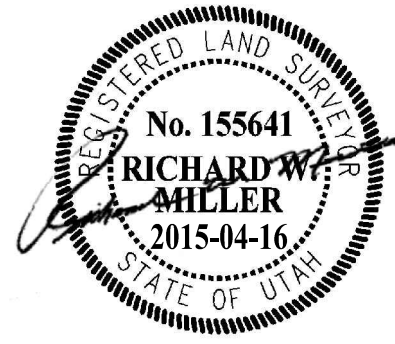


PHASE 1A AMENDED LDWG  
Layout  
2014-1-16 NONE  
N:\SEB0703\CADD\PHASE 1A AMENDMENTS\PHASE 1A AMENDMENTS\PLAT\FINAL

**SURVEYOR'S CERTIFICATE**

I, RICHARD W. MILLER, DO HEREBY CERTIFY THAT I AM A REGISTERED PROFESSIONAL LAND SURVEYOR IN THE STATE OF UTAH IN ACCORDANCE WITH TITLE 58, CHAPTER 22, PROFESSIONAL ENGINEERS AND LAND SURVEYORS ACT; AND THAT I HAVE COMPLETED A SURVEY OF THE PROPERTY DESCRIBED ON THIS PLAT IN ACCORDANCE WITH SECTION 17-23-17 AND HAVE VERIFIED ALL MEASUREMENTS AND HAVE PLACED MONUMENTS AS REPRESENTED IN THIS PLAT, AND THAT THIS PLAT, SUMMIT EDEN PHASE 1A AMENDMENT I, IN WEBER COUNTY, UTAH, HAS BEEN DRAWN CORRECTLY TO THE DESIGNATED SCALE AND IS A TRUE AND CORRECT REPRESENTATION OF THE HEREON DESCRIBED LANDS INCLUDING SAID SUBDIVISION, BASED UPON DATA COMPILED FROM RECORDS IN THE WEBER COUNTY RECORDER'S OFFICE AND FROM SAID SURVEY MADE BY ME ON THE GROUND.



RICHARD W. MILLER  
PROFESSIONAL LAND SURVEYOR  
UTAH CERTIFICATE NO. 155641

**SURVEY NARRATIVE:**

1-THIS SURVEY WAS PERFORMED TO AMEND SUMMIT EDEN PHASE 1A AS RECORDED IN THE OFFICE OF THE WEBER COUNTY RECORDERS OFFICE AS ENTRY NO. 2672943 IN BOOK 75 AT PAGES 28-31, AND COMBINE THE THREE PARCELS C1, C2, AND C3 INTO TWO PARCELS.

2-THE BASIS OF BEARINGS FOR THIS PLAT IS NORTH 89°55'51" WEST BETWEEN THE NORTHEAST CORNER OF SECTION 1, TOWNSHIP 7 NORTH, RANGE 1 EAST, SALT LAKE BASE AND MERIDIAN AND A FOUND WEBER COUNTY LINE MONUMENT SET BY THE WEBER COUNTY SURVEYOR'S OFFICE. THIS BEARING DIFFERS FROM WEBER COUNTY SURVEYORS BEARING BY 00°00'14" AS SHOWN ON COUNTY LINE DECLARATION RECORDED PLAT BOOK 74, PAGE 64.

**OWNER'S DEDICATION:**

KNOW ALL MEN BY THESE PRESENT THAT SMHG PHASE I, LLC, THE UNDERSIGNED OWNERS OF THE ABOVE DESCRIBED TRACT OF LAND, HAVING CAUSED THE SAME TO BE SUBDIVIDED INTO LOTS AND STREETS TO BE HEREAFTER KNOWN AS SUMMIT EDEN PHASE 1A, AMENDMENT I.

IN WITNESS WHEREOF, DECLARANT HAS EXECUTED THIS OWNER'S DEDICATION AS OF THE \_\_\_\_ DAY OF \_\_\_\_\_, 2015.

SMHG PHASE I LLC, A DELAWARE LIMITED LIABILITY COMPANY

BY: SMHG INVESTMENTS LLC, A DELAWARE LIMITED LIABILITY COMPANY  
ITS: SOLE MEMBER

BY: \_\_\_\_\_  
NAME: ELLIOTT BISNOW  
TITLE: MANAGER

BY: \_\_\_\_\_  
NAME: GREGORY VINCENT MAURO  
TITLE: MANAGER

**ACKNOWLEDGEMENT:**

STATE OF UTAH }  
COUNTY OF \_\_\_\_\_ } S.S.

THE FOREGOING INSTRUMENT WAS ACKNOWLEDGED BEFORE ME THIS \_\_\_\_ DAY OF \_\_\_\_\_ 2015 BY ELLIOTT BISNOW, MANAGER OF SMHG INVESTMENTS LLC, THE SOLE MEMBER OF SMHG PHASE I LLC.

NOTARY PUBLIC  
MY COMMISSION EXPIRES: \_\_\_\_\_  
RESIDING IN: \_\_\_\_\_

STATE OF UTAH }  
COUNTY OF \_\_\_\_\_ } S.S.

THE FOREGOING INSTRUMENT WAS ACKNOWLEDGED BEFORE ME THIS \_\_\_\_ DAY OF \_\_\_\_\_ 2015 BY GREGORY VINCENT MAURO, MANAGER OF SMHG INVESTMENTS LLC, THE SOLE MEMBER OF SMHG PHASE I LLC.

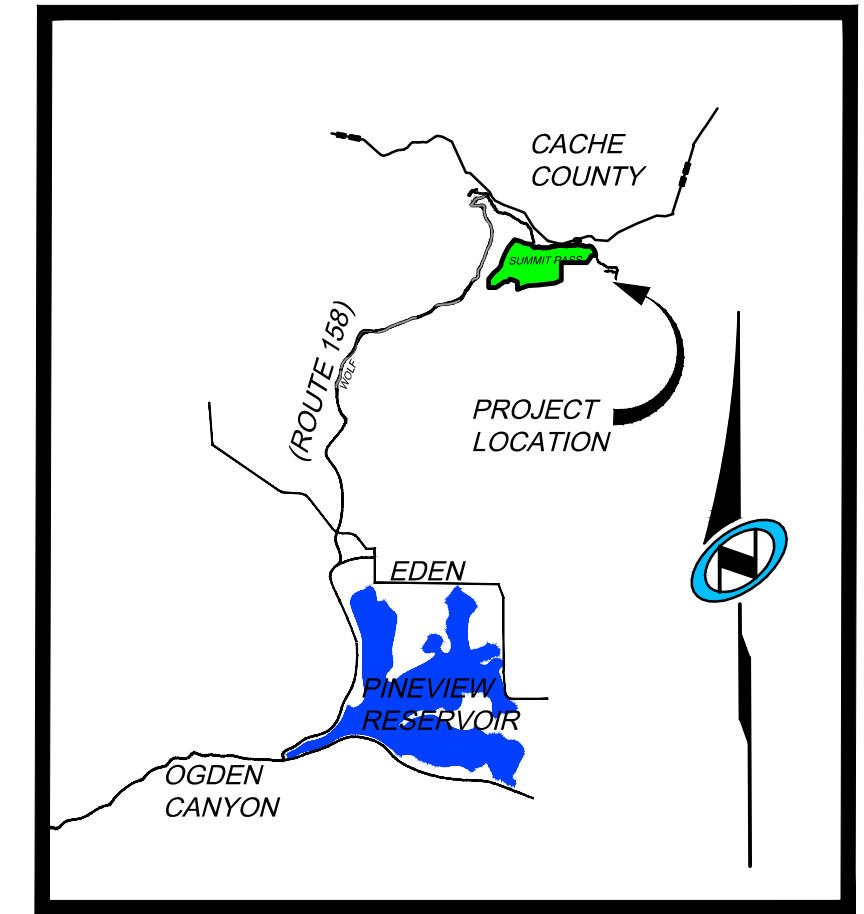
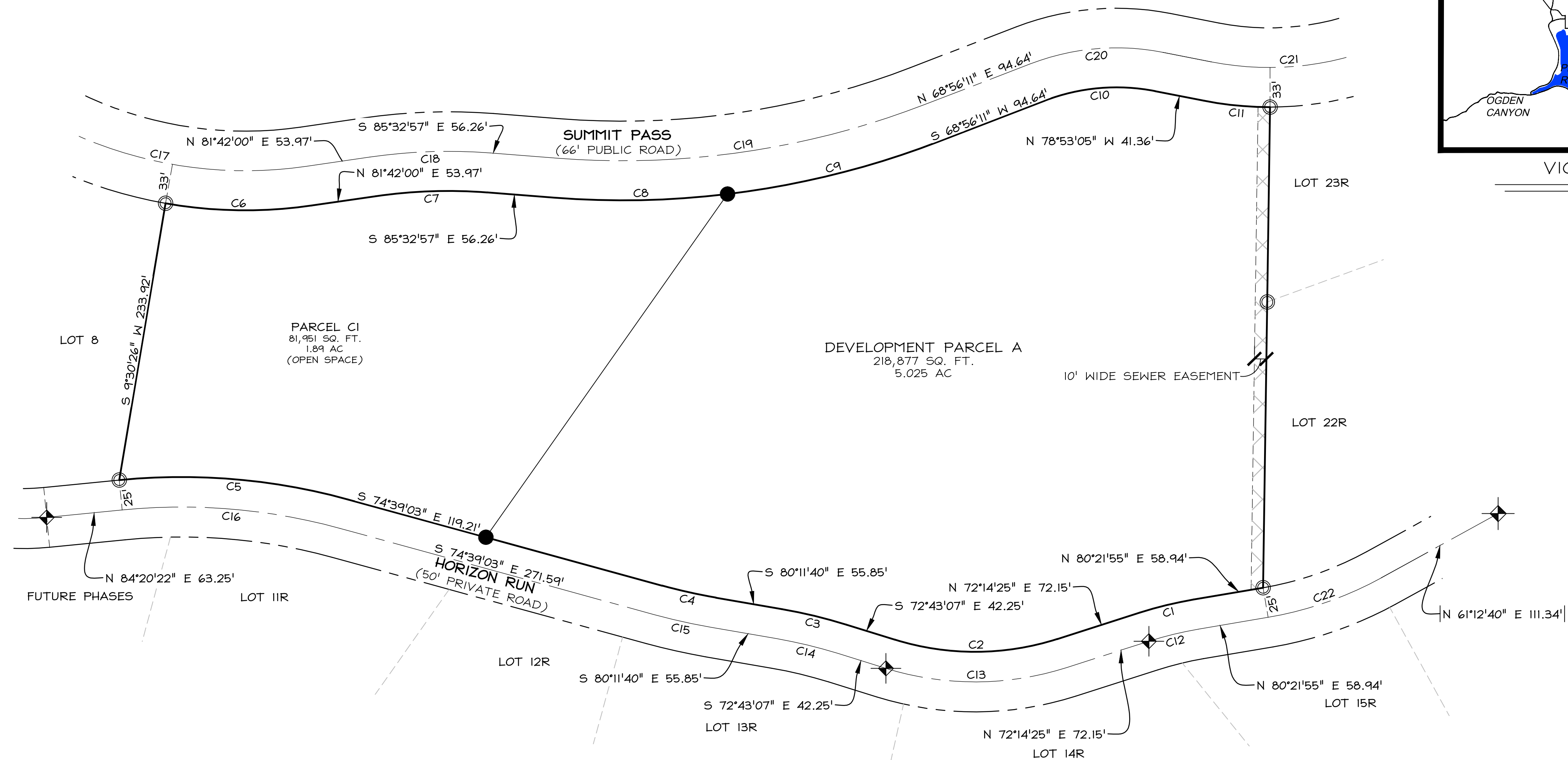
NOTARY PUBLIC  
MY COMMISSION EXPIRES: \_\_\_\_\_  
RESIDING IN: \_\_\_\_\_

**NOTES:**

1-THE AMENDED LOTS SHOWN HEREON ARE SUBJECT TO ALL NOTES, CODES, COVENANTS, RESTRICTIONS, EASEMENTS AND RIGHTS OF WAY AS SHOWN ON SUMMIT EDEN PHASE 1A, AS RECORDED IN THE WEBER COUNTY RECORDERS OFFICE AS ENTRY NUMBER 2672943 IN BOOK 75 AT PAGES 28-31

**SUMMIT EDEN PHASE 1A AMENDMENT I**

THE SOUTHEAST QUARTER OF SECTION 6, TOWNSHIP 7 NORTH, RANGE 2 EAST, SALT LAKE BASE AND MERIDIAN  
WEBER COUNTY, UTAH  
APRIL 2015



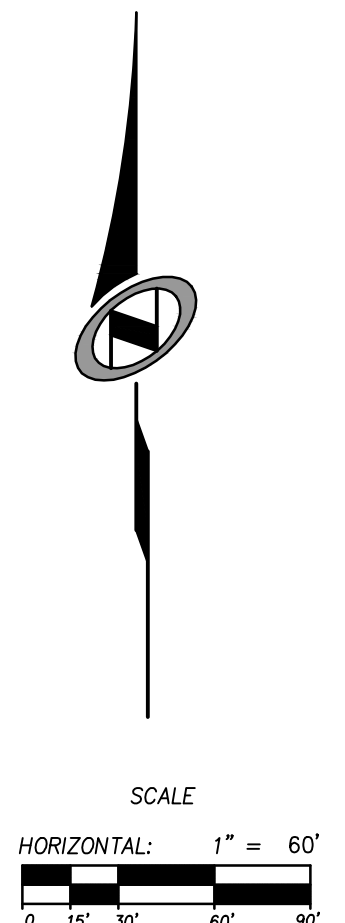
VICINITY MAP  
N.T.S.

CURVE	LENGTH	RADIUS	DELTA	LONG CHORD	LENGTH
C1	46.09'	325.00'	8°07'31"	S 76°18'10" W	46.05'
C2	137.61'	225.00'	35°02'29"	N 89°45'39" E	135.47'
C3	55.45'	425.00'	7°28'33"	N 76°27'23" W	55.41'
C4	45.96'	475.00'	5°32'37"	S 77°25'21" E	45.94'
C5	192.51'	525.00'	21°00'36"	N 85°09'21" W	191.44'
C6	122.41'	383.00'	18°18'42"	S 89°08'39" E	121.89'
C7	93.18'	418.71'	12°45'03"	S 88°04'31" W	92.99'
C8	144.52'	733.00'	11°17'47"	N 88°48'09" E	144.29'
C9	181.89'	733.00'	14°13'04"	N 76°02'43" E	181.43'
C10	93.79'	167.00'	32°10'44"	S 85°10'33" W	92.56'
C11	55.57'	283.00'	11°15'02"	S 84°30'36" E	55.48'

CURVE	LENGTH	RADIUS	DELTA	LONG CHORD	LENGTH
C12	42.54'	300.00'	8°07'31"	S 76°18'10" W	42.51'
C13	152.90'	250.00'	35°02'29"	N 89°45'39" E	150.52'
C14	52.19'	400.00'	7°28'33"	N 76°27'23" W	52.15'
C15	48.38'	500.00'	5°32'37"	S 77°25'21" E	48.36'
C16	183.35'	500.00'	21°00'36"	N 85°09'21" W	182.32'
C17	247.74'	350.00'	40°33'19"	S 78°01'21" E	242.60'
C18	100.53'	451.71'	12°45'03"	S 88°04'31" W	100.32'
C19	311.72'	700.00'	25°30'52"	N 81°41'37" E	309.15'
C20	112.33'	200.00'	32°10'44"	S 85°10'33" W	110.86'
C21	130.00'	250.00'	29°47'36"	N 86°13'07" E	128.54'
C22	100.29'	300.00'	19°09'16"	N 70°47'17" E	99.83'

**LEGEND**

- BOUNDARY LINE
- LOT LINE
- SECTION LINE
- QUARTER SECTION LINE
- ADJOINER DEED LINES
- AREA TIE LINES
- STREET MONUMENTS
- FOUND REBAR WITH PLASTIC CAP STAMPED "NOLTE ASSOC."
- SET REBAR WITH PLASTIC CAP STAMPED "NOLTE ASSOC."
- BUILDING ENVELOPE
- EASEMENT



**SUMMIT EDEN PHASE 1A AMENDMENT I**  
THE SOUTHEAST 1/4 OF SECTION 6 OF TOWNSHIP 7 NORTH, RANGE 2 EAST, SALT LAKE BASE AND MERIDIAN, WEBER COUNTY, UTAH

\_\_\_\_\_  
SIGNATURE

**WEBER COUNTY ATTORNEY**  
I HAVE EXAMINED THE FINANCIAL GUARANTEE AND OTHER DOCUMENTS ASSOCIATED WITH THIS SUBDIVISION PLAT AND IN MY OPINION THEY CONFORM WITH THE COUNTY ORDINANCE APPLICABLE THERETO AND NOW IN FORCE AND AFFECT.  
SIGNED THIS \_\_\_\_ DAY OF \_\_\_\_\_, 20 \_\_\_\_.

\_\_\_\_\_  
SIGNATURE

**WEBER COUNTY SURVEYOR**  
I HEREBY CERTIFY THAT THE WEBER COUNTY SURVEYOR'S OFFICE HAS REVIEWED THIS PLAT FOR MATHEMATICAL CORRECTNESS, SECTION CORNER DATA AND FOR HARMONY WITH LINES AND MONUMENTS ON RECORD IN THE COUNTY OFFICES. THE APPROVAL OF THIS PLAT BY THE WEBER COUNTY SURVEYORS DOES NOT RELIEVE THE LICENSED LAND SURVEYOR WHO EXECUTED THIS PLAT FROM RESPONSIBILITIES AND/OR LIABILITIES ASSOCIATED THEREWITH. SIGNED THIS \_\_\_\_ DAY OF \_\_\_\_\_, 20 \_\_\_\_.

\_\_\_\_\_  
COUNTY SURVEYOR

**WEBER COUNTY ENGINEER**  
I HEREBY CERTIFY THAT THE REQUIRED PUBLIC IMPROVEMENT STANDARDS AND DRAWINGS FOR THIS SUBDIVISION CONFORM WITH COUNTY STANDARDS AND THE AMOUNT OF THE FINANCIAL GUARANTEE IS SUFFICIENT FOR THE INSTALLATION OF THESE IMPROVEMENTS.  
SIGNED THIS \_\_\_\_ DAY OF \_\_\_\_\_, 20 \_\_\_\_.

\_\_\_\_\_  
SIGNATURE

**WEBER COUNTY PLANNING COMMISSION APPROVAL**  
THIS IS TO CERTIFY THAT THIS SUBDIVISION PLAT WAS DULY APPROVED BY THE WEBER COUNTY PLANNING COMMISSION ON THE DAY OF \_\_\_\_.

\_\_\_\_\_  
CHAIRMAN-WEBER COUNTY PLANNING COMMISSION

**WEBER COUNTY COMMISSION ACCEPTANCE**  
THIS IS TO CERTIFY THAT THIS SUBDIVISION PLAT, THE DEDICATION OF STREETS AND OTHER PUBLIC WAYS AND FINANCIAL GUARANTEE OF PUBLIC IMPROVEMENTS ASSOCIATED WITH THIS SUBDIVISION THEREON ARE HEREBY APPROVED AND ACCEPTED BY THE COMMISSIONERS OF WEBER COUNTY, UTAH  
THIS \_\_\_\_ DAY OF \_\_\_\_\_, 20 \_\_\_\_.

\_\_\_\_\_  
CHAIRMAN, WEBER COUNTY COMMISSION

**NIV5**  
5217 SOUTH STATE STREET, SUITE 200 MURRAY, UT 84107  
801.743.1300 TEL. 801.743.0300 FAX WWW.NOLTE.COM

**RECORDED #**  
STATE OF UTAH, COUNTY OF WEBER, RECORDED AND FILED AT THE  
REQUEST OF: \_\_\_\_\_  
ENTRY NO: \_\_\_\_\_  
DATE: \_\_\_\_\_ TIME: \_\_\_\_\_  
BOOK: \_\_\_\_\_ PAGE: \_\_\_\_\_  
FEE \$ \_\_\_\_\_  
WEBER COUNTY RECORDER