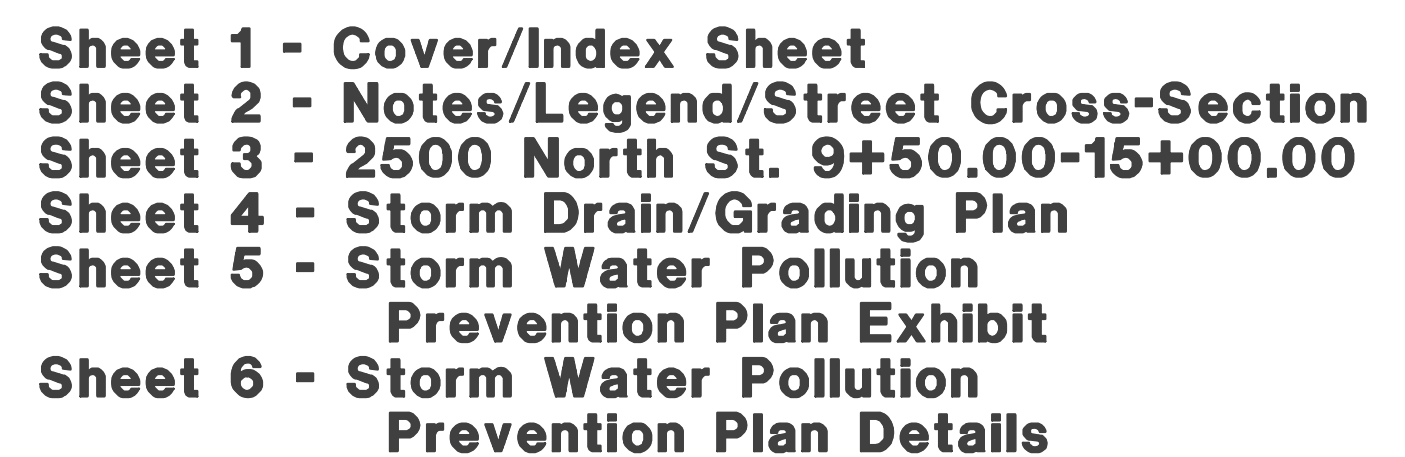


- 1) 2/5/15 RH - COMPLETED DESIGN FOR CLIENT & COUNTY REVIEW.
- 2) 3/2/15 RH - REVISED WATER LOCATION.
- 3) 4/21/15 ST - REVISED PER COUNTY COMMENTS.

EDEN, WEBER COUNTY, UTAH  
FEBRUARY 2015



THE EXISTENCE AND LOCATION OF ANY UNDERGROUND UTILITY LINES OR STRUCTURES SHOWN ON THESE PLANS ARE OBTAINED FROM AVAILABLE INFORMATION PROVIDED BY OTHERS. THE LOCATIONS SHOWN ARE APPROXIMATE AND SHALL BE CONFIRMED IN THE FIELD BY THE CONTRACTOR, SO THAT ANY NECESSARY ADJUSTMENT CAN BE MADE IN ALIGNMENT AND/OR GRADE OF THE PROPOSED IMPROVEMENT. THE CONTRACTOR IS REQUIRED TO CONTACT THE UTILITY COMPANIES AND TAKE DUE PRECAUTIONARY MEASURE TO PROTECT ANY UTILITY LINES SHOWN, AND ANY OTHER LINES OBTAINED BY THE CONTRACTOR'S RESEARCH, AND OTHERS NOT OF RECORD OR NOT SHOWN ON THESE PLANS.

SITE BENCHMARK:  
3" BRASS CAP SET ON TOP SOUTHEAST CORNER  
OF IRRIGATION STRUCTURE.  
NE 1/4 SEC. 34 T7.N., R1E.  
ELEVATION = 4966.925', DATUM = WC-44

**Blake Wahlen**  
2080 East Oakridge Circle  
Layton, UT 84040  
PH: (801) 510-6136

Blue Stakes Location Center  
**Call: Toll Free**  
**1-800-662-4111**  
Two Working Days Before You Dig

DATE	DESCRIPTION
3-2-15	RH City Comments
4-6-15	TP City Comments

Cover/Index Sheet



Engineer: J. NATE REEVE, P.E.  
 Drafter: R. HANSEN  
 Begin Date: FEBRUARY 4, 2015  
 Name: SANDHILL CRANE  
 CLUSTER  
 SUBDIVISION  
 Number: 6460-01

Sheet	<b>6</b>
<b>1</b>	
Sheets	