


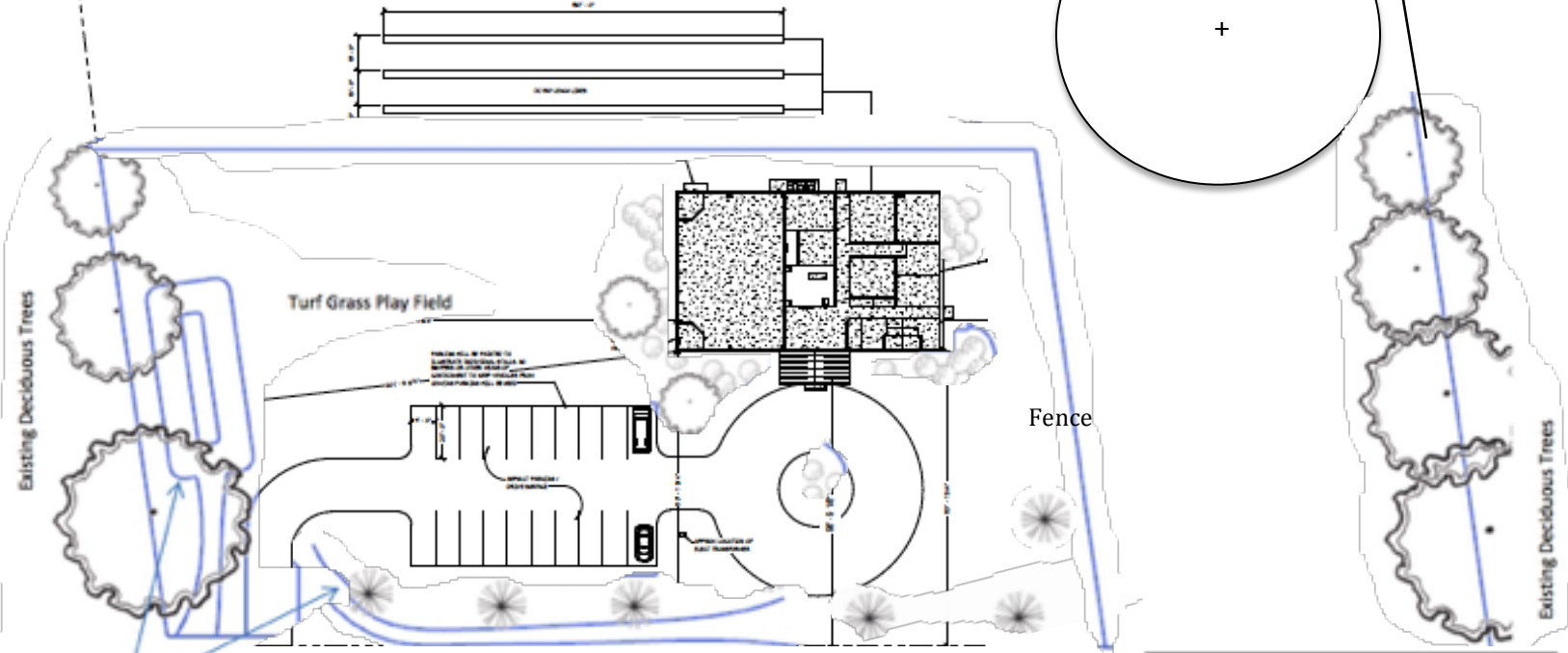


Ogden Valley Community Church Landscape Plan

-  Evergreen Tree
-  Maple Trees, minimum 2" trunk
-  Shrubs, 5 gallon size

Evergreen Trees: Picia Pungens Bacheri (29 ft separation)
 Deciduous Trees: Acer Platanoides
 Shrubs: Spiraea Japonica Magic Carpet, Golden Elf Monhub and
 Potentilla Fruticosa Abbotswood

Areas north and east of building to be fenced and used as horse pasture



Retention basin and grass swales as required by Drainage Plan

- *All areas where shrubbery is shown will have mulch ground cover and decorative river rock borders when not otherwise separated by a walkway or driveway.
- *Walkways will be poured concrete or concrete pavers.
- *Irrigation for shrubs and trees will be via above-ground drip lines connected to secondary water pump.
- *Irrigation for turf grass will be via impact-rotary sprinklers fed by above-ground hoses connected to secondary water pump.
- *Area between the road and the parking lot/driveway to be seeded with natural grass.

| | | |
|---|--------|-------|
| Total Lot Area (approx. excluding road) | 138384 | sq ft |
| Non-developed area (horse pasture) | 70379 | sq ft |
| Developed area: | 68132 | sq ft |
| Pavement Area: | 11219 | sq ft |
| Building Area: | 6250 | sq ft |
| Landscaped Area: | 50663 | sq ft |
| Turf Grass Area: | 25115 | sq ft |
| % Total Lot Landscaped: | 36.6 | % |
| % Developed Area Landscaped: | 71.4 | % |
| % Landscaped Area Turf Grass: | 49.6 | % |