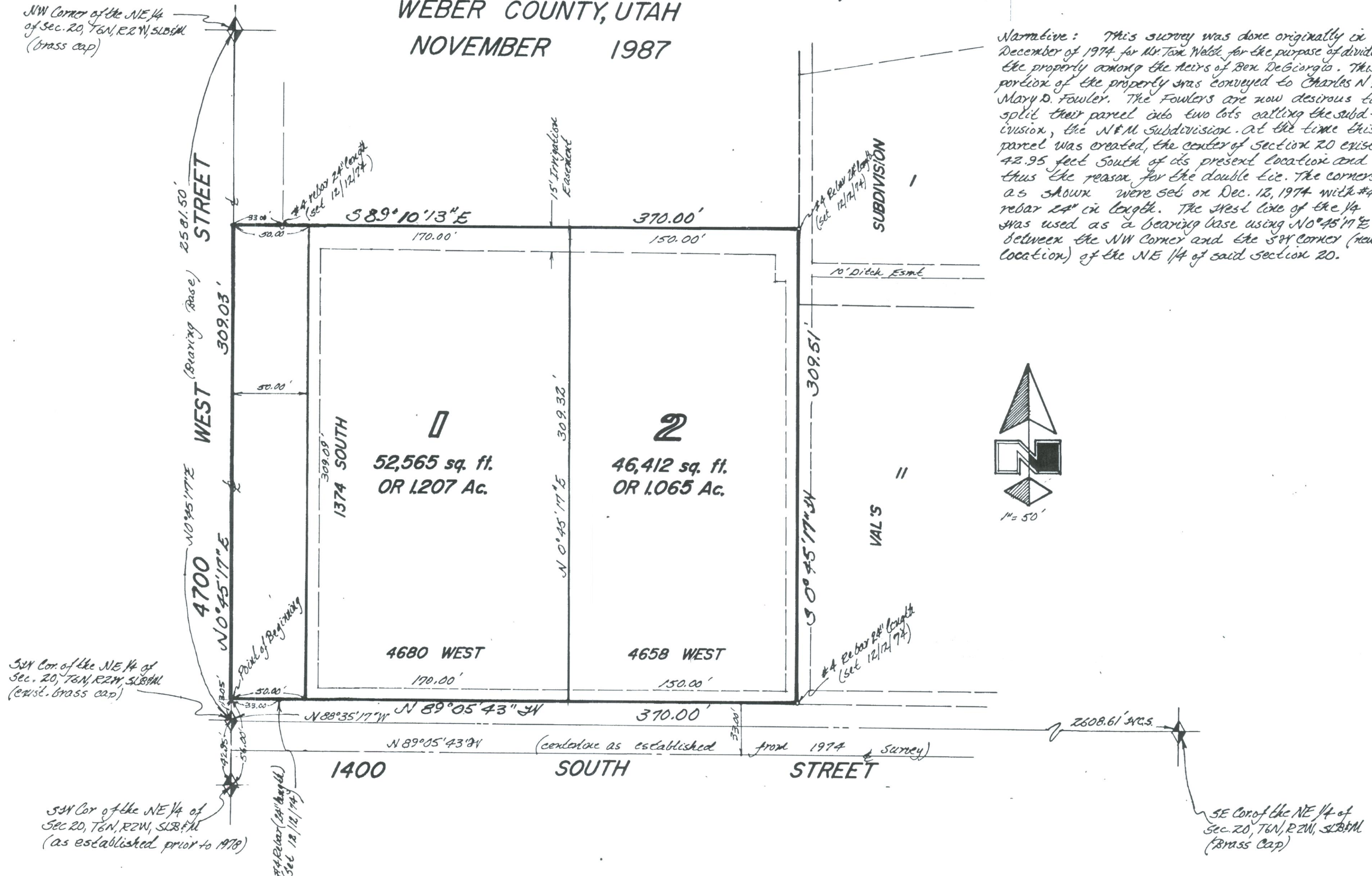


N & M SUBDIVISION

A PART OF THE NE 1/4 OF SECTION 20, T6N, R2W, SLB&M, U.S. SURVEY
WEBER COUNTY, UTAH
NOVEMBER 1987

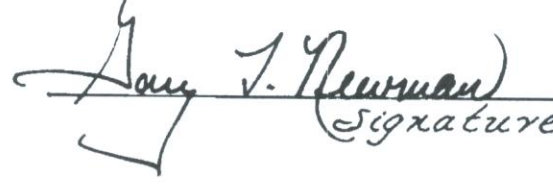


Narrative: This survey was done originally in December of 1974 for Mr. Tom Webb for the purpose of dividing the property among the heirs of Ben DeGiorgio. This portion of the property was conveyed to Charles N. & Mary D. Fowler. The Fowlers are now desirous to split their parcel into two lots calling the subdivision, the N & M Subdivision. At the time this parcel was created, the center of Section 20 existed 42.95 feet south of its present location and thus the reason for the double line. The corners as shown were set on Dec. 12, 1974 with #4 rebar 24" in length. The steel line of the 1/4 was used as a bearing base using No. 45° 17' E between the NW corner and the SW corner (new location) of the NE 1/4 of said section 20.

SURVEYOR'S CERTIFICATE

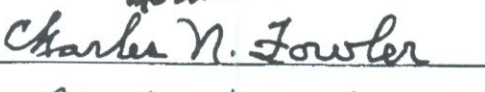

I, Gary L. Newman, a registered land surveyor in the State of Utah, do hereby certify that this plat of N & M Subdivision in Weber County, Utah has been correctly drawn to the designated scale and is a true and correct representation of the following description of lands included in said subdivision, based on data compiled from records in the Weber County Recorder's Office, and of a survey made on the ground.

4778
License No.

Signed this 21st day of October, 1987

 GARY L. NEWMAN
 REGISTERED LAND SURVEYOR
 No. 4778
 STATE OF UTAH

OWNER'S DEDICATION

We, the undersigned owners of the herein described tract of land, do hereby set apart and subdivide the same into lots and streets (Private Streets, Private Rights of Way) as shown on the plat and name said tract N & M Subdivision and do hereby dedicate, grant and convey to Weber County, Utah all those parts or portions of said tract of land designated as streets (parks) the same to be used as public thoroughfares (parks) forever, and also grant and dedicate a perpetual right and easement over, upon and under the lands designated on the plat as public utility, storm water detention ponds and drainage easements, the same to be used for the installation, maintenance and operation of public utility service lines, storm drainage facilities or for the perpetual preservation of water drainage channels in their natural state whichever is applicable as may be authorized by Weber County, Utah, with no buildings or structures being erected within such easements.

Signed this 25th day of October, 1987
 Charles N. Fowler
 Mary D. Fowler
 Norman & wife

ACKNOWLEDGEMENT

State of Utah
 County of Weber
 On the 25th day of October, 1987, personally appeared before me, the undersigned Notary Public, the signers of the above Owners Dedication, 2 in number, who duly acknowledged to me they signed it freely and voluntarily and for the purposes therein mentioned.


September 17, 1988
 Commission Expires
 State of Utah
 County of Weber
 On the _____ day of _____, 1987, personally appeared before me, _____ who being by me duly sworn did say that they are _____ and that said instrument was signed in behalf of said Corporation by a resolution of its Board of Directors, and acknowledged to me that said Corporation executed the same.
 Commission Expires _____ Notary Public _____

BOUNDARY DESCRIPTION

A part of the NE 1/4 of Section 20, T6N, R2W, SLB&M, U.S. Survey in Weber County, Utah: Beginning at a point on the 1/4 section line said point being 56.00 feet N 0° 45' 17" E along said 1/4 section line from the SW corner of said NE 1/4 section as monumented prior to 1978; said point of beginning is now 13.05 feet N 0° 45' 17" E along said 1/4 section line from the Brass Cap now set at the SW corner of said NE 1/4 section, and running thence N 0° 45' 17" E 309.03 feet along said 1/4 section line; thence S 89° 10' 13" E 370.00 feet; thence S 0° 45' 17" E 309.51 feet to the North line of 1400 South Street; thence N 89° 05' 43" W 370.00 feet along said North line to the point of beginning.


Contains 2.63 acres

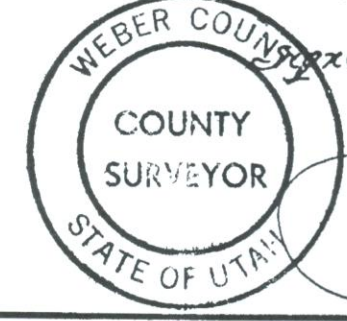
WEBER COUNTY ATTORNEY

I have examined this subdivision plat and in my opinion it conforms with the County Ordinance applicable thereto and now in force and effect.
 Signed this 27th day of JANUARY, 1988

 Signature


NOTE: Utility and Drainage Easements each side of Property Line as indicated by dashed lines, unless otherwise shown.
 PREPARED BY
GREAT BASIN ENGINEERING, INC.
 CONSULTING ENGINEERS & SURVEYORS
 OGDEN & SALT LAKE CITY, UTAH

WEBER COUNTY ENGINEER

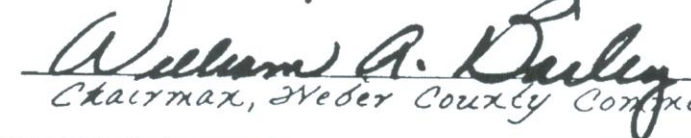
I hereby certify that I have investigated the lines of survey of the foregoing plat and legal description of the land embraced therein, and find them to be correct and to agree with the lines and monuments on record in this office. I also approve the required improvement standards and drawings for this subdivision and the amount of financial guarantee for these improvements.
 Signed this 25th day of JANUARY, 1988

 Signature




WEBER COUNTY PLANNING COMMISSION APPROVAL

This is to certify that this subdivision plat was duly approved by the Weber County Planning Commission on the 26 day of JANUARY, 1988

 Chairman, Weber County Planning Commission

WEBER COUNTY COMMISSION ACCEPTANCE

This is to certify that this subdivision plat, the dedication and the financial guarantee of public improvements thereon are hereby accepted by the Commissioners of Weber County, Utah this 27th day of JANUARY, 1988

 Chairman, Weber County Commission

ATTEST: 
 WEBER COUNTY CLERK
 DATE: JANUARY 27, 1988

WEBER COUNTY RECORDER
 ENTRY NO. 1037346 FEE PAID \$21.00 FILED FOR RECORD AND RECORDED FEBRUARY 2, 1988, AT 4:51 PM IN BOOK 30 OF OFFICIAL RECORDS, PAGE 14 RECORDED FOR CHARLES N. FOWLER
 DOUG CROFTS
 COUNTY RECORDER
 BY: Keann Melts DEPUTY