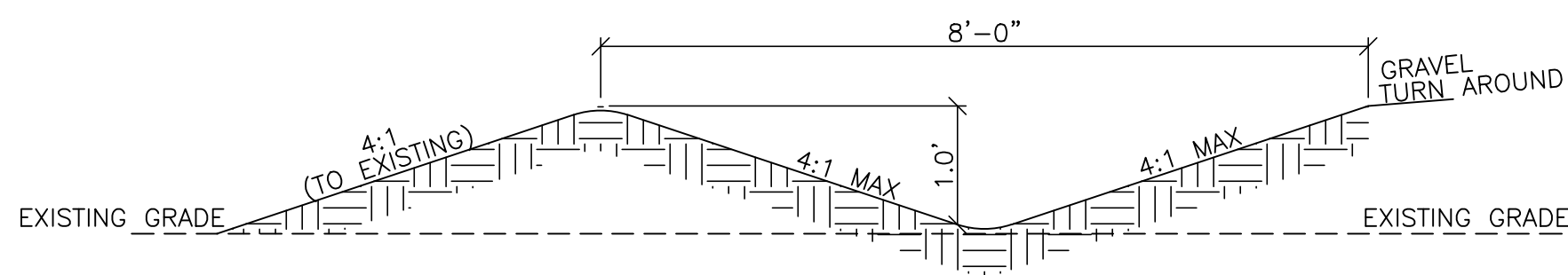
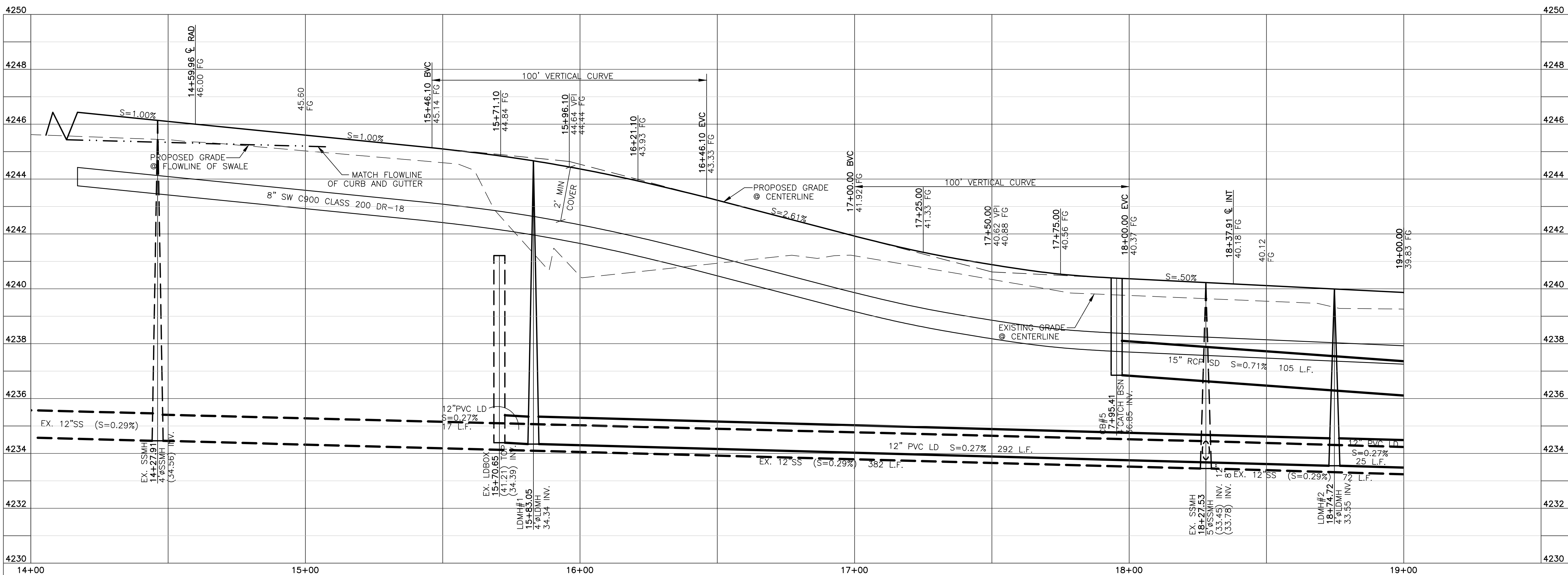
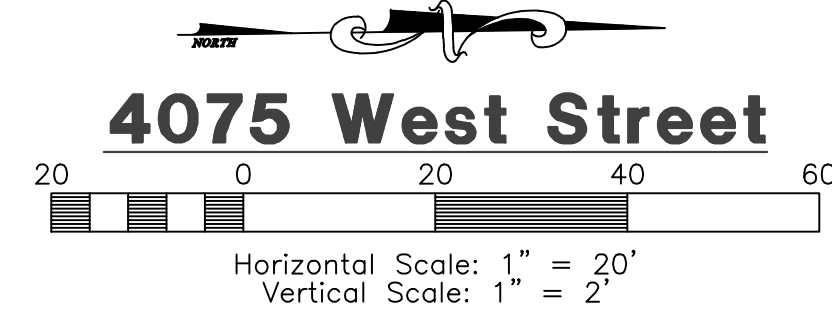


TEMPORARY TURNAROUND TO BE CONSTRUCTED PER WEBER COUNTY PUBLIC WORKS STANDARDS AND SPECIFICATIONS.



Drainage Ditch
SCALE: NONE



Blue Stakes Location Center
Call: Toll Free
1-800-662-4111
Two Working Days Before You Dig

Construction Notes:

- ALL CONSTRUCTION IS TO CONFORM TO THE STANDARD DRAWINGS AND SPECIFICATIONS OF WEBER COUNTY.
- CULINARY WATER**
W/10 - 10" PVC C-900 CLASS 200 WATER
- STORM DRAIN**
SD/15 - 15" RCP STORM DRAIN
SD/15 ARCH - 15" ARCH RCP STORM DRAIN
- SANITARY SEWER**
SS/8 - 8" PVC C-900 SEWER LINE
SS/12 - 12" PVC C-900 SEWER LINE
- SECONDARY WATER**
SW/8 - 8" PVC C-900 SECONDARY WATER LINE
- LAND DRAIN**
LD/12 - 12" PVC C-900 LAND DRAIN LINE

Reeve & Associates, Inc.
920 CHAMBERS STREET, SUITE 14, OGDEN, UTAH 84403
TEL: (801) 621-3100 FAX: (801) 621-2666 www.reeve-assoc.com

IRA
LAND PLANNERS • CIVIL ENGINEERS • LAND SURVEYORS
TRAFFIC ENGINEERS • STRUCTURAL ENGINEERS • LANDSCAPE ARCHITECTS

REVISIONS	DATE	DESCRIPTION
1	3-17-15	TP County Comments
2	3-27-15	TP County Comments
3	6-25-15	RH County Comments
4	7-22-15	RH County Comments
5	9-17-15	RH County Comments
6	11-12-15	RH County Comments
7	11-25-15	RH County Comments

Revised: **11-25-15**

Blue Acres Subdivision Phase-4
WEBER COUNTY, UTAH

4075 West Street
14+00.00 - 19+00.00



Project Info.

Engineer: J. NATE REEVE, P.E.
 Drafter: R. HANSEN
 Begin Date: JUNE 10, 2014
 Name: BLUE ACRES SUBDIVISION PHASE-4
 Number: 5036-01