

Construction Notes:

1) ALL CONSTRUCTION IS TO CONFORM TO THE STANDARD DRAWINGS AND SPECIFICATIONS OF WEBER COUNTY.

CULINARY WATER

W/10 - 10" PVC C-900 CLASS 200 WATER

STORM DRAIN

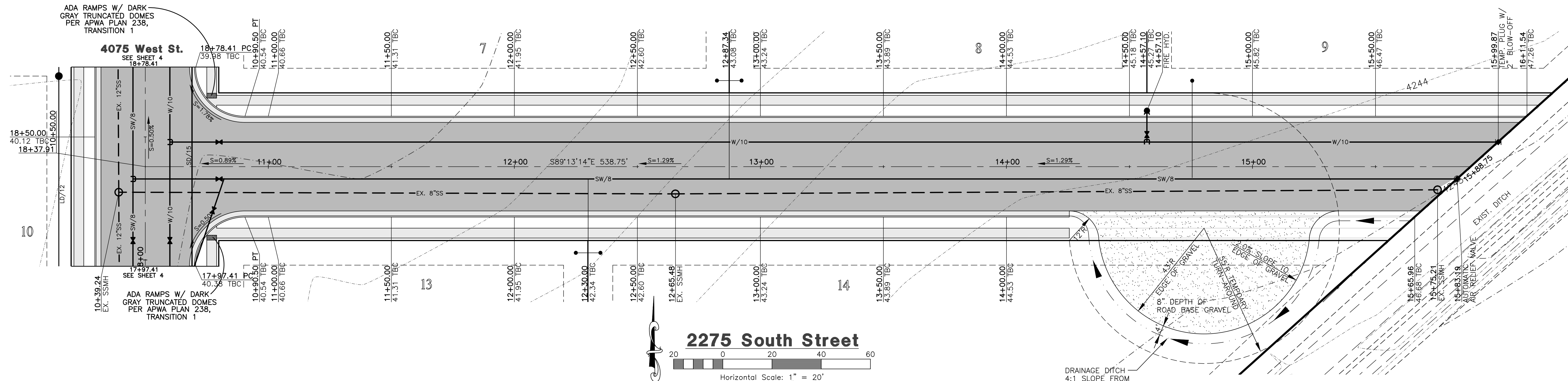
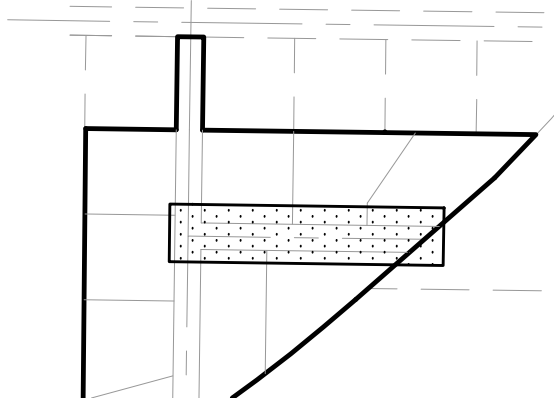
SD/15 - 15" RCP STORM DRAIN
SD/15 ARCH - 15" ARCH RCP STORM DRAIN

SANITARY SEWER

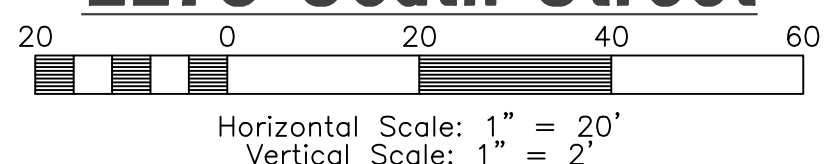
SS/8 - 8" PVC C-900 SEWER LINE
SS/12 - 12" PVC C-900 SEWER LINE

SECONDARY WATER

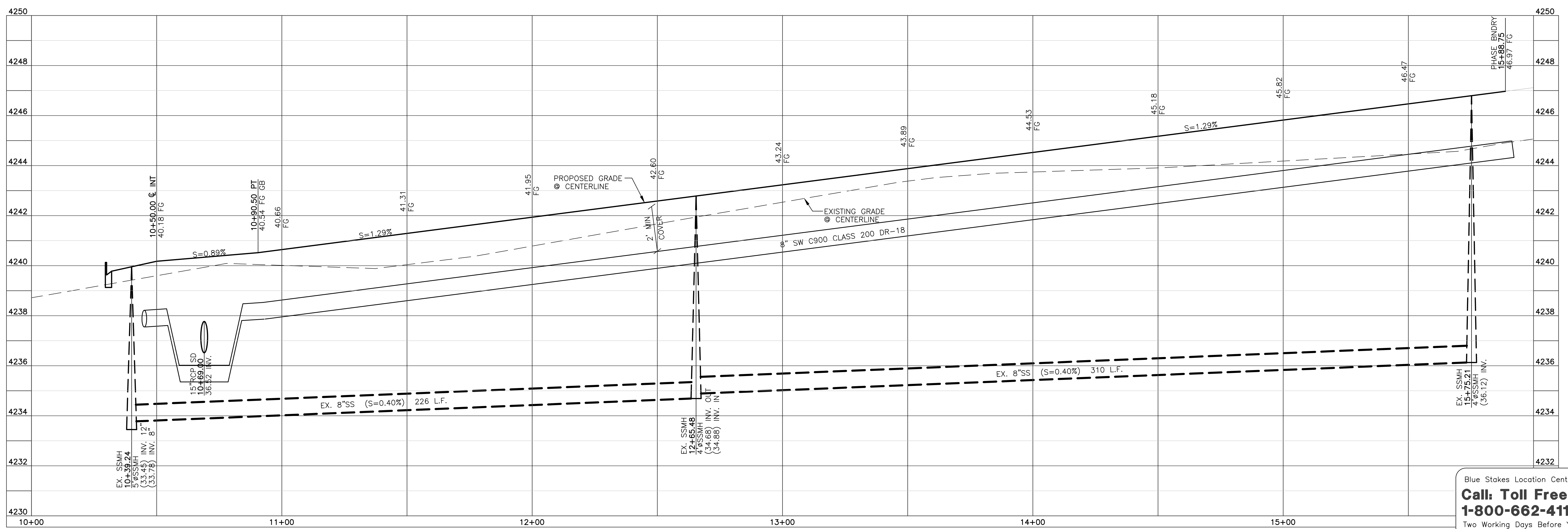
SW/8 - 8" PVC C-900 SECONDARY WATER LINE



2275 South Street



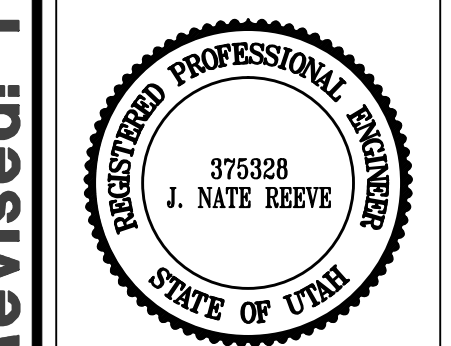
TEMPORARY TURNAROUND TO BE CONSTRUCTED PER WEBER COUNTY PUBLIC WORKS STANDARDS AND SPECIFICATIONS.



Blue Stakes Location Center
Call: Toll Free 1-800-662-4111
Two Working Days Before You Dig

Revised: 11-25-15

Blue Acres Subdivision Phase-4
WEBER COUNTY, UTAH
2275 South Street
10+00.00 - 15+50.00



Project Info.
Engineer: J. NATE REEVE, P.E.
Drafted: R. HANSEN
Begin Date: JUNE 10, 2014
Name: BLUE ACRES SUBDIVISION PHASE-4
Number: 5036-01

Sheet **8**
5 Sheets

Reeve & Associates, Inc.
920 CHAMBERS STREET, SUITE 14, OGDEN, UTAH 84403
TEL: (801) 621-3100 FAX: (801) 621-2666 WWW.REEVE-ASSOC.COM
LAND PLANNERS • CIVIL ENGINEERS • LAND SURVEYORS
TRAFFIC ENGINEERS • STRUCTURAL ENGINEERS • LANDSCAPE ARCHITECTS

DATE	DESCRIPTION
3-17-15	TP County Comments
3-27-15	TP County Comments
6-25-15	RH County Comments
7-22-15	RH County Comments
9-17-15	RH County Comments
11-12-15	RH County Comments
11-25-15	RH County Comments