

Construction Notes:

1) ALL CONSTRUCTION IS TO CONFORM TO THE STANDARD DRAWINGS AND SPECIFICATIONS OF WEBER COUNTY.

CULINARY WATER

W/10 - 10" PVC C-900 CLASS 200 WATER

STORM DRAIN

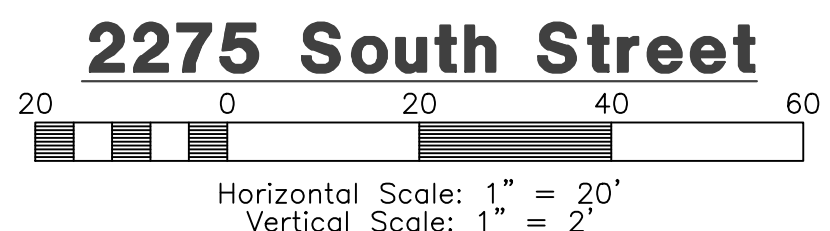
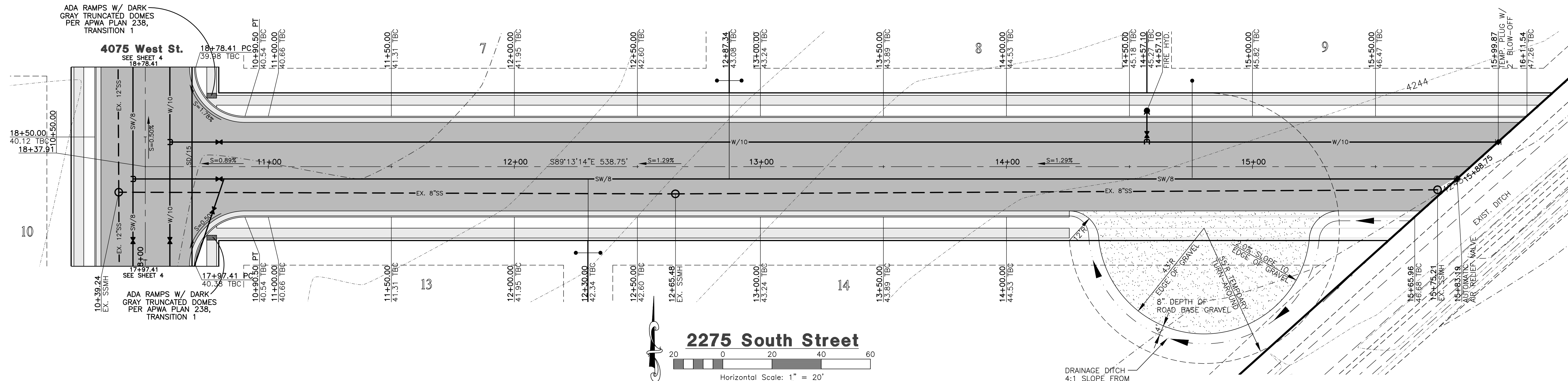
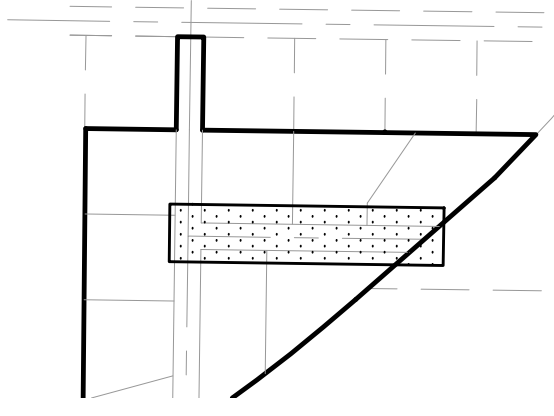
SD/15 - 15" RCP STORM DRAIN
SD/15 ARCH - 15" ARCH RCP STORM DRAIN

SANITARY SEWER

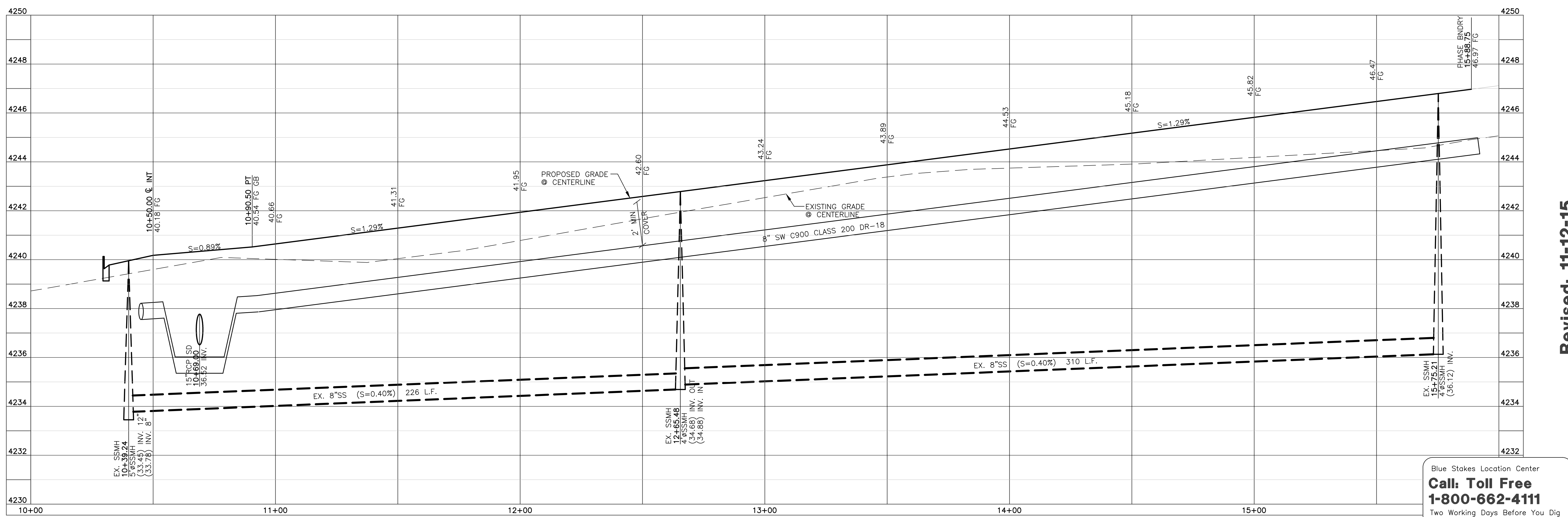
SS/8 - 8" PVC C-900 SEWER LINE
SS/12 - 12" PVC C-900 SEWER LINE

SECONDARY WATER

SW/8 - 8" PVC C-900 SECONDARY WATER LINE



TEMPORARY TURNAROUND TO BE CONSTRUCTED PER WEBER COUNTY PUBLIC WORKS STANDARDS AND SPECIFICATIONS.



Blue Stakes Location Center
Call: Toll Free 1-800-662-4111
Two Working Days Before You Dig

Reeve & Associates, Inc.
920 CHAMBERS STREET, SUITE 14, OGDEN, UTAH 84403
TEL: (801) 621-3100 FAX: (801) 621-2666 WWW.REEVE-ASSOC.COM
LAND PLANNERS • CIVIL ENGINEERS • LAND SURVEYORS
TRAFFIC ENGINEERS • STRUCTURAL ENGINEERS • LANDSCAPE ARCHITECTS

REVISIONS	DATE	DESCRIPTION
2-11-15	RH	Client Changes
3-17-15	TP	County Comments
3-27-15	TP	County Comments
6-25-15	RH	County Comments
7-22-15	RH	County Comments
9-17-15	RH	County Comments
11-12-15	RH	County Comments

Blue Acres Subdivision
Phase-4
WEBER COUNTY, UTAH
2275 South Street
10+00.00 - 15+50.00

Revised: 11-12-15

Project Info.

Engineer:	J. NATE REEVE, P.E.
Drafter:	R. HANSEN
Begin Date:	JUNE 10, 2014
Name:	BLUE ACRES SUBDIVISION PHASE-4
Number:	5036-01

Sheet **8**
5 Sheets