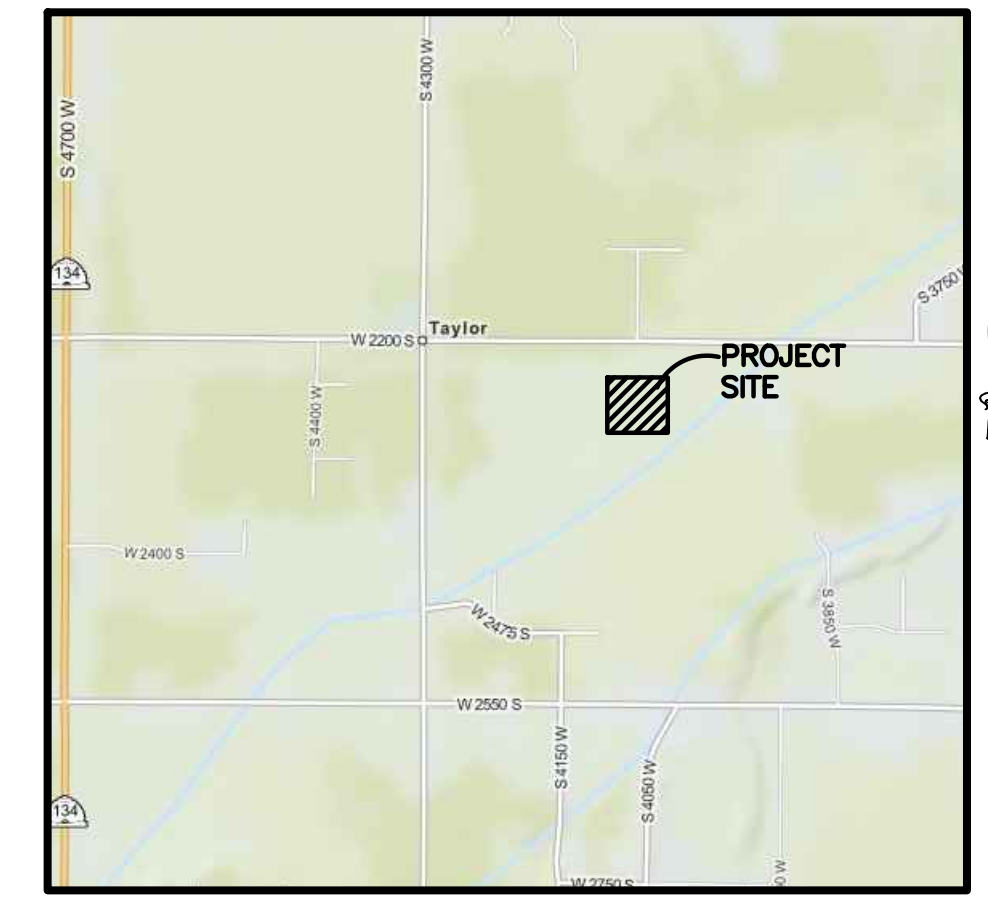
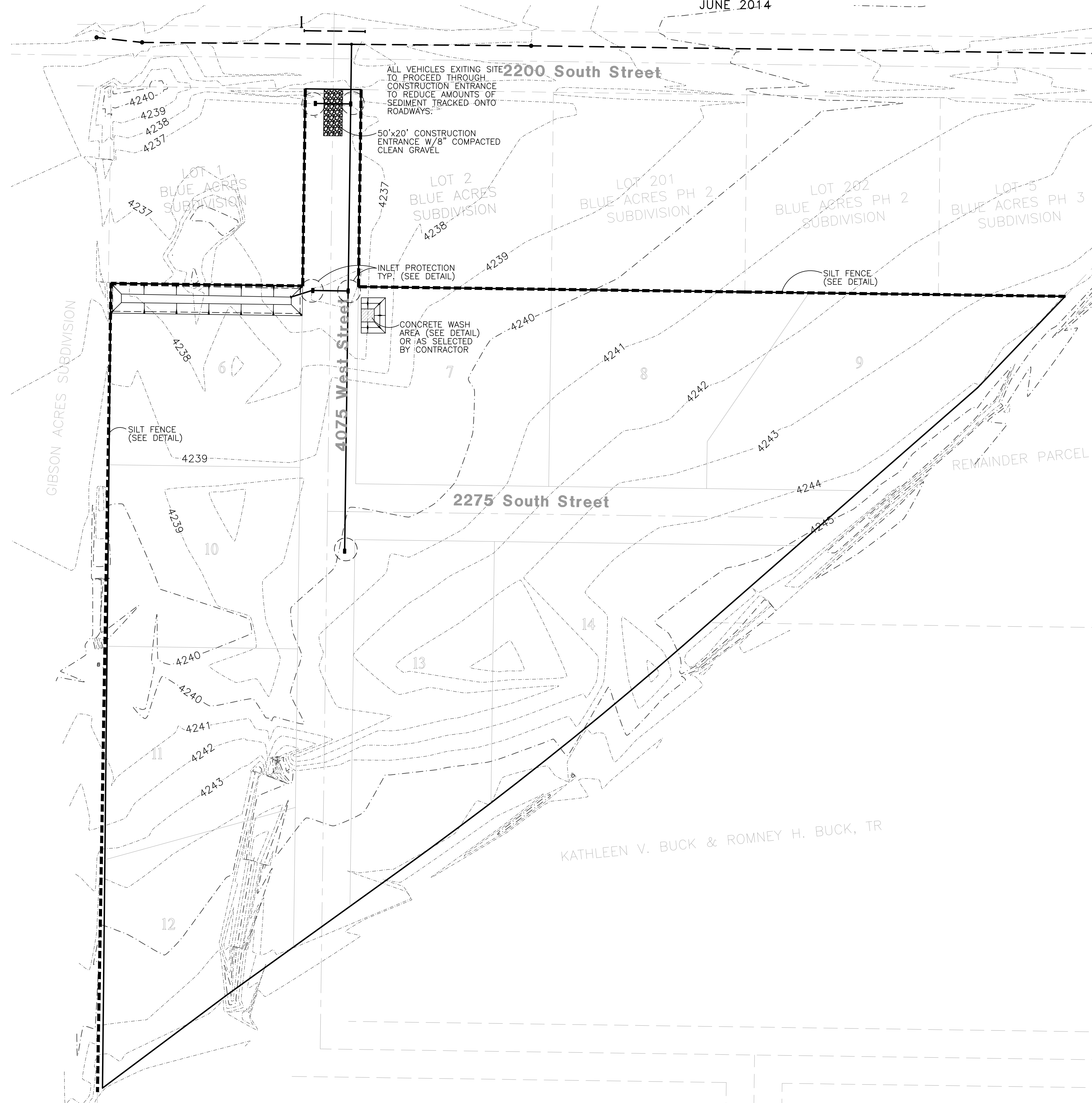


BLUE ACRES SUBDIVISION Phase-4 Storm Water Pollution Prevention Plan Exhibit

WEBER COUNTY, UTAH
JUNE 2014

STREETS TO BE SWEEP WITHIN
1000 FEET OF CONSTRUCTION
ENTRANCE DAILY IF NECESSARY

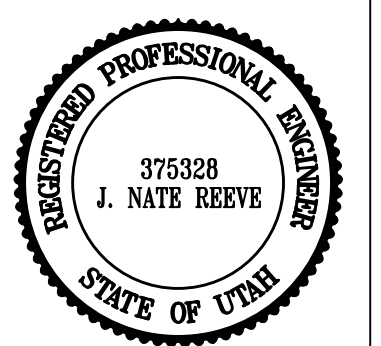


Vicinity Map
NOT TO SCALE

Reeve & Associates, Inc.
920 CHAMBERS STREET, SUITE 14, OGDEN, UTAH 84403
TEL: (801) 621-3100 FAX: (801) 621-2666 www.reeve-assoc.com
LAND PLANNERS • CIVIL ENGINEERS • LAND SURVEYORS
TRAFFIC ENGINEERS • STRUCTURAL ENGINEERS • LANDSCAPE ARCHITECTS

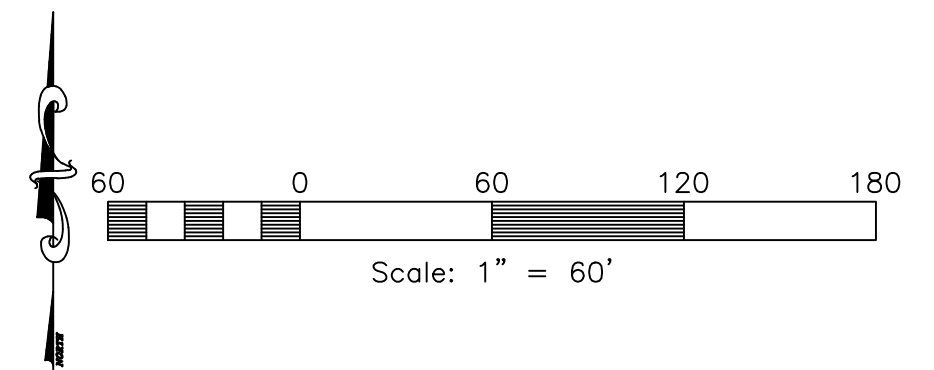
DATE	DESCRIPTION
2-11-15	RH Client Changes
3-17-15	TP County Comments
3-27-15	TP County Comments
6-25-15	RH County Comments
7-22-15	RH County Comments
9-17-15	RH County Comments
11-12-15	RH County Comments

**Blue Acres Subdivision
Phase-4
Storm Water Pollution
Prevention Plan Exhibit**
WEBER COUNTY, UTAH



Project Info.
Engineer: J. NATE REEVE, P.E.
Drafted: R. HANSEN
Begin Date: JUNE 10, 2014
Name: BLUE ACRES SUBDIVISION PHASE-4
Number: 5036-01

Construction Activity Schedule	
- PROJECT LOCATION.....	WEBER COUNTY, UTAH
- PROJECT BEGINNING DATE.....	JUNE 2014
- BMP'S DEPLOYMENT DATE.....	JUNE 2014
- STORM WATER MANAGEMENT CONTACT / INSPECTOR.....	ROMNEY BUCK (801) 540-7235
- SPECIFIC CONSTRUCTION SCHEDULE INCLUDING BMP CONSTRUCTION SCHEDULE TO BE INCLUDED WITH SWPPP BY OWNER/DEVELOPER	



Revised: 11-12-15