

**Project Narrative/Notes/Revisions**

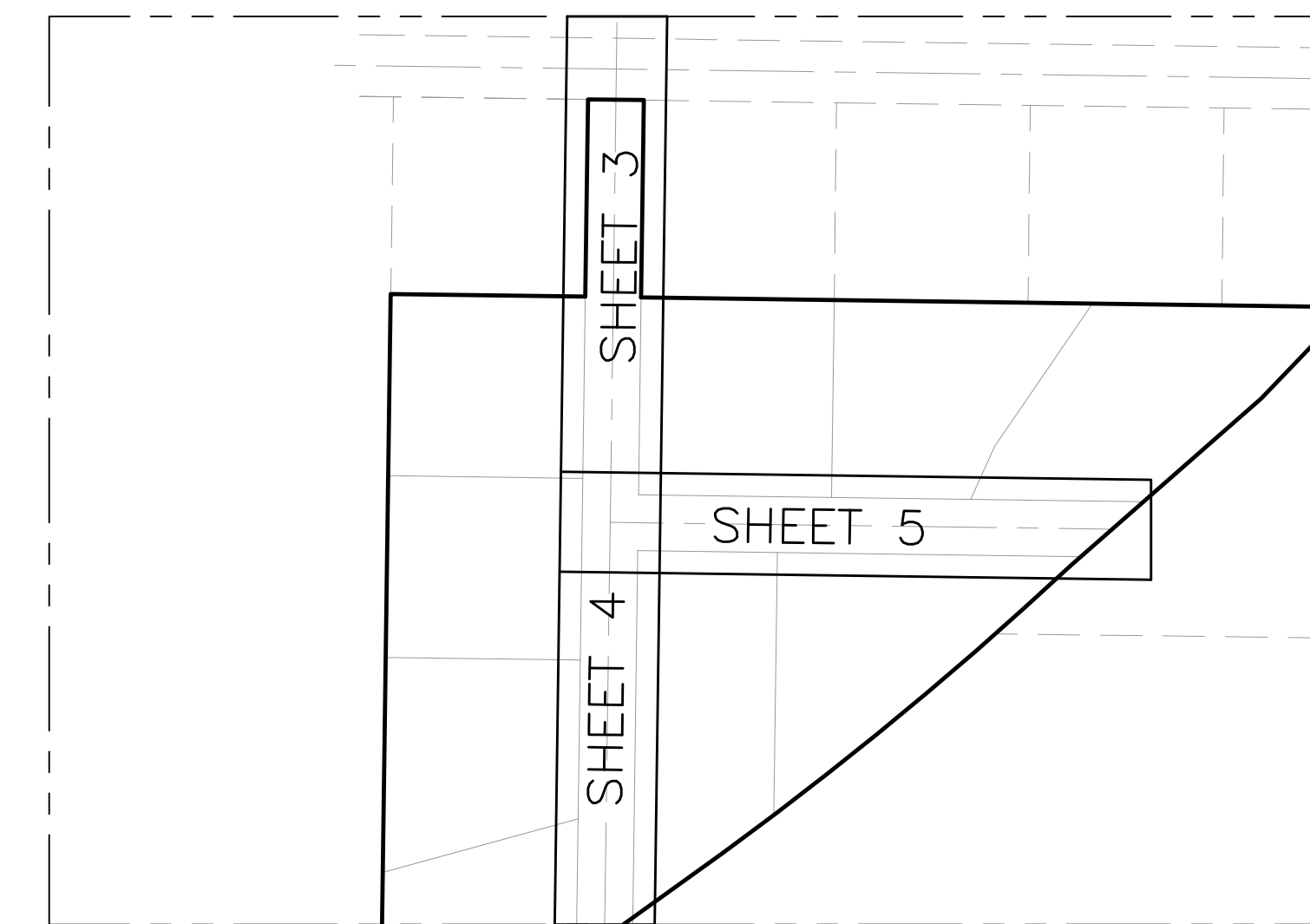
- 1) 6/19/14 RH - COMPLETED DESIGN FOR CLIENT & COUNTY REVIEW.
- 2) 9/3/14 RH - REVISED DESIGN FOR CLIENT CHANGES.
- 3) 1/12/15 RH - REVISED DESIGN PER COUNTY COMMENTS.
- 4) 1/20/15 RH - REVISED DESIGN PER COUNTY COMMENTS.
- 5) 2/11/15 RH - REVISED DESIGN PER CLIENT CHANGES.

# BLUE ACRES SUBDIVISION Phase-4 Improvement Plans

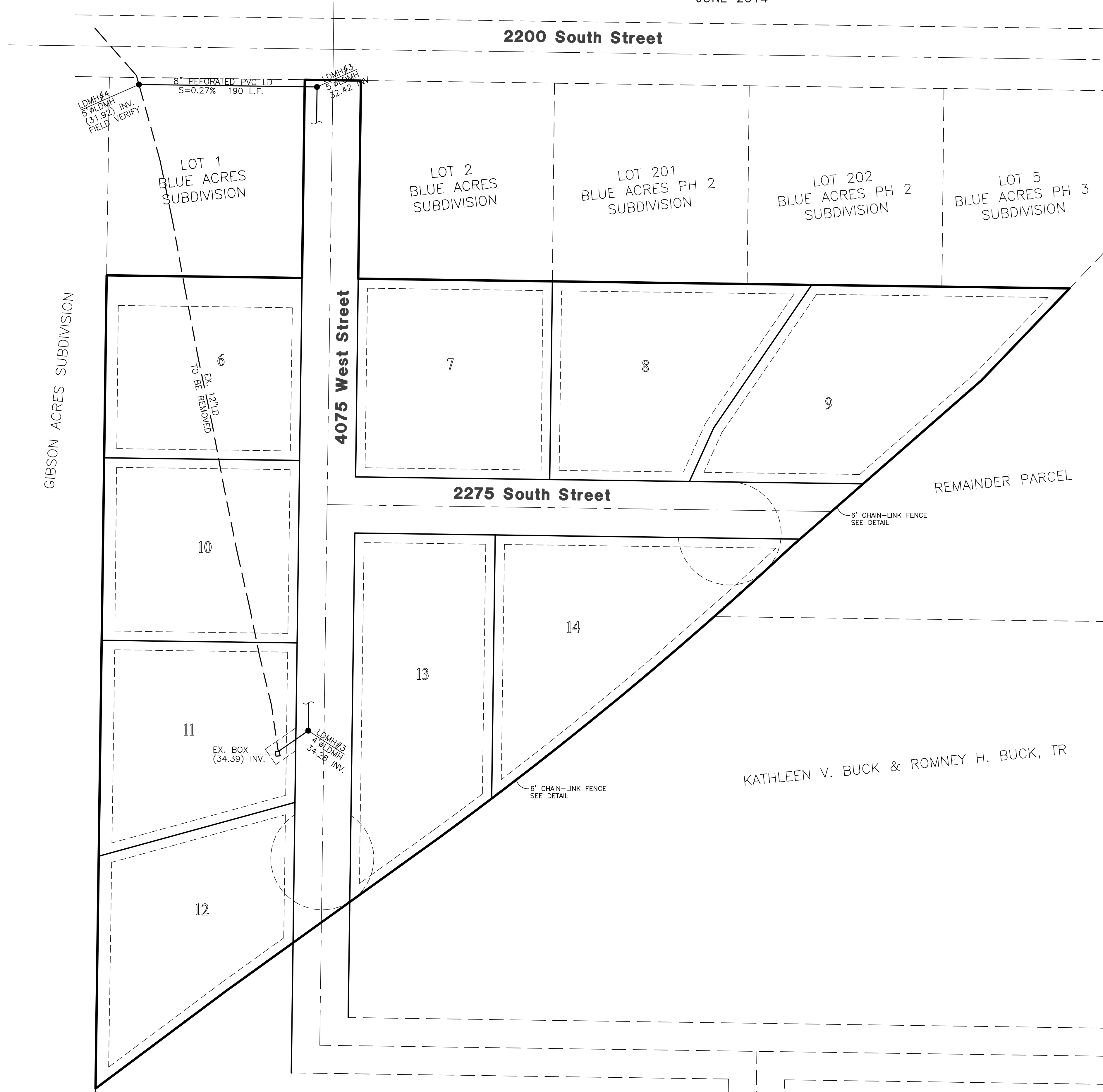
WEBER COUNTY, UTAH  
JUNE 2014



**Vicinity Map**  
NOT TO SCALE

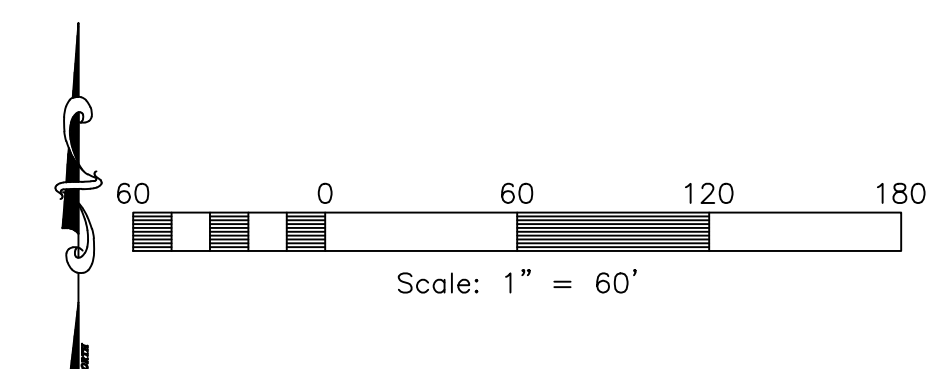


**Sheet Index Key Map**  
NOT TO SCALE



**Sheet Index**

- Sheet 1 - Cover/Index Sheet
- Sheet 2 - Notes/Legend/Street Cross-Section
- Sheet 3 - 4075 West St. 19+00.00 - 23+50.00
- Sheet 4 - 4075 West St. 14+00.00 - 19+00.00
- Sheet 5 - 2275 South St. 10+00.00 - 16+00.00
- Sheet 6 - Detention Basin
- Sheet 7 - Storm Water Pollution Prevention Plan Exhibit
- Sheet 8 - Storm Water Pollution Prevention Plan Details



**Reeve & Associates, Inc.**

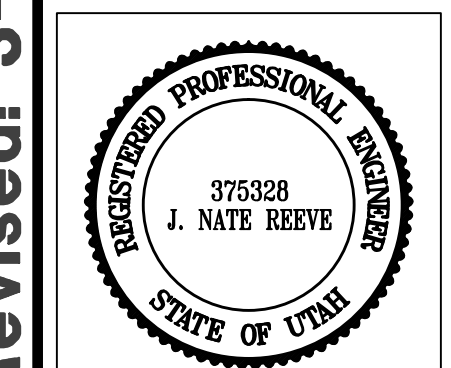
**IRA**

920 CHAMBERS STREET, SUITE 14, OGDEN, UTAH 84403  
TEL: (801) 540-7235 FAX: (801) 540-7236 WWW.REEVE-ASSOC.COM  
LAND PLANNERS • CIVIL ENGINEERS • LAND SURVEYORS  
TRAFFIC ENGINEERS • STRUCTURAL ENGINEERS • LANDSCAPE ARCHITECTS

DATE	DESCRIPTION
9-3-14	RH - Client Changes
1-12-15	RH - County Comments
1-20-15	RH - County Comments
2-11-15	RH - Client Changes
3-17-15	TP - County Comments

**Blue Acres Subdivision  
Phase-4**  
WEBER COUNTY, UTAH

**Cover/Index Sheet**



**Project Info.**

Engineer:	J. NATE REEVE, P.E.
Drafter:	R. HANSEN
Begin Date:	JUNE 10, 2014
Name:	BLUE ACRES SUBDIVISION PHASE-4
Number:	5036-01

Sheet	<b>8</b>
<b>1</b>	Sheets

**Engineer's Notice To Contractors**

THE EXISTENCE AND LOCATION OF ANY UNDERGROUND UTILITY PIPES OR STRUCTURES SHOWN ON THESE PLANS WERE OBTAINED FROM AVAILABLE INFORMATION PROVIDED BY OTHERS. THE LOCATIONS SHOWN ARE APPROXIMATE AND SHALL BE CONFIRMED IN THE FIELD BY THE CONTRACTOR, SO THAT ANY NECESSARY ADJUSTMENT CAN BE MADE IN ALIGNMENT AND/OR GRADE OF THE PROPOSED IMPROVEMENT. THE CONTRACTOR IS REQUIRED TO CONTACT THE UTILITY COMPANIES AND TAKE DUE PRECAUTIONARY MEASURE TO PROTECT ANY UTILITY LINES SHOWN, AND ANY OTHER LINES OBTAINED BY THE CONTRACTOR'S RESEARCH, AND OTHERS NOT OF RECORD OR NOT SHOWN ON THESE PLANS.

**Developer Contact:**  
Romney Buck  
4115 West 2550 South  
Ogden, UT, 84404  
PH: (801) 540-7235

Blue Stakes Location Center  
**Call: Toll Free**  
**1-800-662-4111**  
Two Working Days Before You Dig