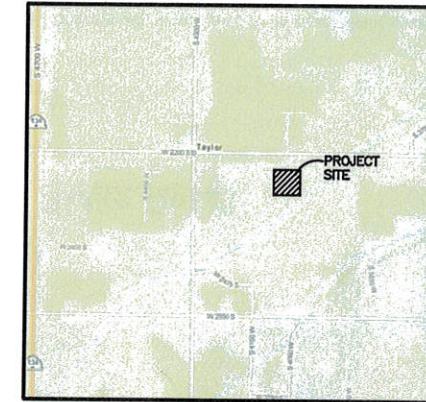


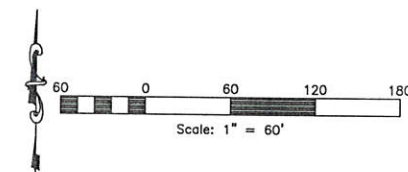
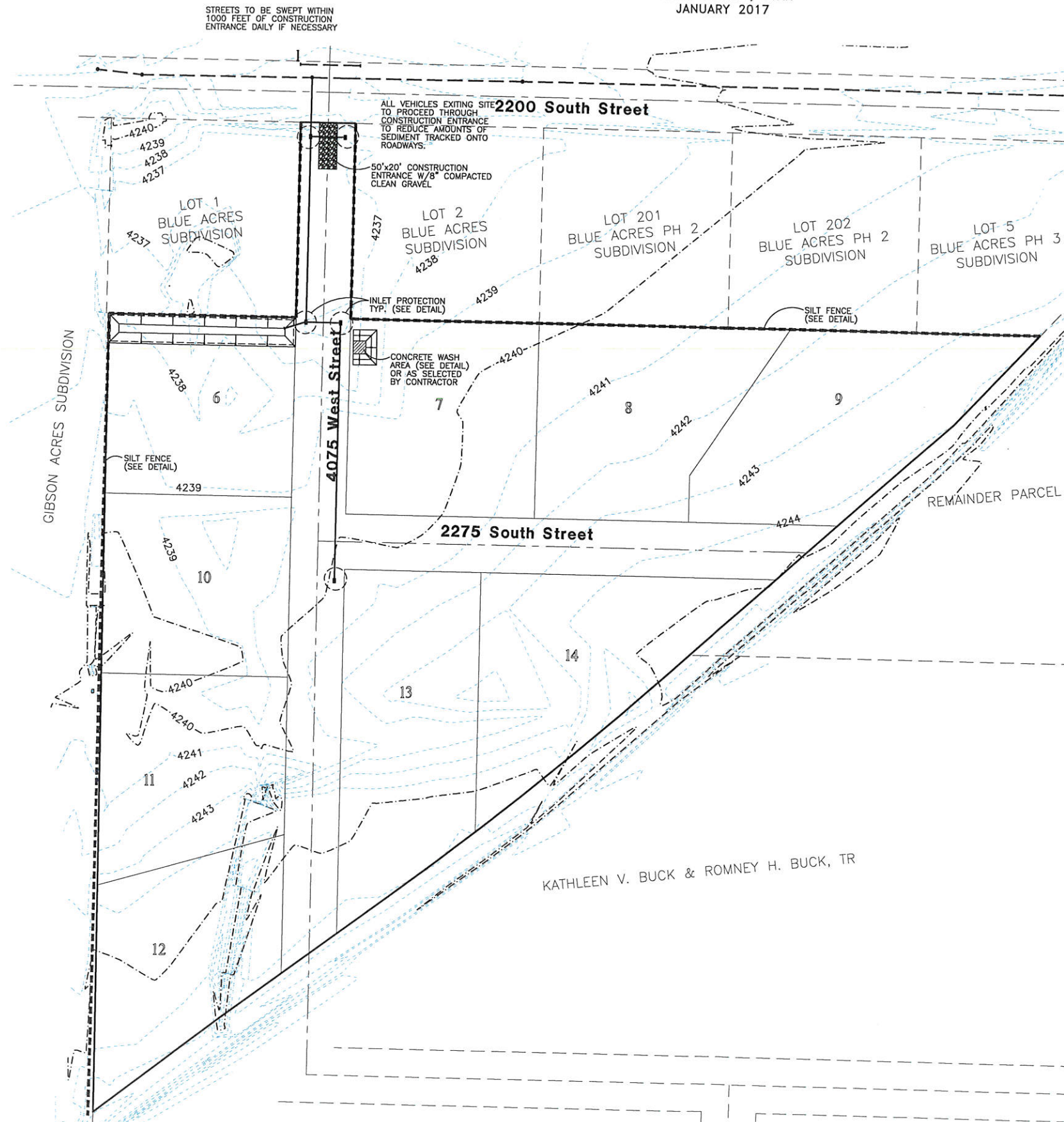
# CAMERON CROSSING SUBDIVISION

## Storm Water Pollution Prevention Plan Exhibit

WEBER COUNTY, UTAH  
JANUARY 2017



**Vicinity Map**  
NOT TO SCALE



Construction Activity Schedule	
- PROJECT LOCATION.....	WEBER COUNTY, UTAH
- PROJECT BEGINNING DATE.....	JANUARY 2017
- BMP'S DEPLOYMENT DATE.....	JANUARY 2017
- STORM WATER MANAGEMENT CONTACT / INSPECTOR.....	DOUG HAMBLIN (801) 725-3782
- SPECIFIC CONSTRUCTION SCHEDULE INCLUDING BMP CONSTRUCTION SCHEDULE TO BE INCLUDED WITH SWPPP BY OWNER/DEVELOPER	

**Reeve & Associates, Inc.**  
920 CHAMBERS STREET, SUITE 114, OGDEN, UTAH 84403  
TEL: (801) 471-0100 FAX: (801) 471-2688 WWW.REEVE-ASSOCIATES.COM  
LAND PLANNERS • CIVIL ENGINEERS • LAND SURVEYORS

DATE	DESCRIPTION
6-28-15	RH County Comments
7-22-15	RH County Comments
9-17-15	RH County Comments
11-12-15	RH County Comments
11-25-15	RH County Comments
12-12-16	RH Proposer Corr. Comments
1-17-17	RH New Owner

**Cameron Crossing Subdivision**  
WEBER COUNTY, UTAH

**Storm Water Pollution Prevention Plan Exhibit**



<b>Project Info.</b>	
Engineer:	J. NATE REEVE, P.E.
Drafter:	R. HANSEN
Begin Date:	JUNE 10, 2014
Name:	CAMERON CROSSING SUBDIVISION
Number:	3442-A47

Sheet	12
11	Sheets

Revised: 1-17-17