

CAMERON CROSSING SUBDIVISION

A PART OF THE SOUTHWEST QUARTER OF SECTION 28, TOWNSHIP 6 NORTH, RANGE 2 WEST, SALT LAKE BASE AND MERIDIAN, U.S. SURVEY
WEBER COUNTY, UTAH
NOVEMBER 2016

BASIS OF BEARINGS

THE BASIS OF BEARINGS FOR THIS PLAT IS THE UTAH COORDINATE SYSTEM (1927) NORTH ZONE, DETERMINED LOCALLY BY THE WEBER COUNTY RECORDS ALONG THE LINE BETWEEN THE WEST QUARTER CORNER AND THE EAST QUARTER CORNER OF SECTION 28, TOWNSHIP 6 NORTH, RANGE 2 WEST, SALT LAKE BASE AND MERIDIAN, U.S. SURVEY, SHOWN HEREON AS: S89°13'14"E

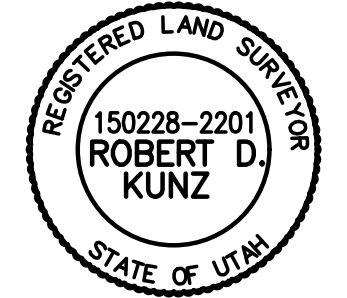
EAST QUARTER CORNER OF SECTION 28, TOWNSHIP 6 NORTH, RANGE 2 WEST, SALT LAKE BASE AND MERIDIAN, U.S. SURVEY, FOUND 3" BRASS CAP SET 1" BELOW ROAD SURFACE (1963)

SURVEYOR'S CERTIFICATE

I, **ROBERT D. KUNZ**, DO HEREBY CERTIFY THAT I AM A REGISTERED PROFESSIONAL LAND SURVEYOR IN THE STATE OF UTAH IN ACCORDANCE WITH TITLE 58, CHAPTER 22, PROFESSIONAL ENGINEERS AND LAND SURVEYORS ACT; AND THAT I HAVE COMPLETED A SURVEY OF THE PROPERTY DESCRIBED ON THIS PLAT IN ACCORDANCE WITH SECTION 17-23-17 AND HAVE VERIFIED ALL MEASUREMENTS, AND HAVE PLACED MONUMENTS AS REPRESENTED ON THIS PLAT, AND THAT THIS PLAT OF **CAMERON CROSSING SUBDIVISION** IN **WEBER COUNTY**, UTAH, HAS BEEN DRAWN CORRECTLY TO THE DESIGNATED SCALE AND IS A TRUE AND CORRECT REPRESENTATION OF THE HEREIN DESCRIBED LANDS INCLUDED IN SAID SUBDIVISION, BASED UPON DATA COMPILED FROM RECORDS IN THE **WEBER COUNTY** RECORDER'S OFFICE AND FROM SAID SURVEY MADE BY ME ON THE GROUND. I FURTHER CERTIFY THAT THE REQUIREMENTS OF ALL APPLICABLE STATUTES AND ORDINANCES OF **WEBER COUNTY** CONCERNING ZONING REQUIREMENTS REGARDING LOT MEASUREMENTS HAVE BEEN COMPLIED WITH.

SIGNED THIS _____ DAY OF _____, 20____.

150228
UTAH LICENSE NUMBER **ROBERT D. KUNZ**



OWNERS DEDICATION AND CERTIFICATION

WE THE UNDERSIGNED OWNERS OF THE HEREIN DESCRIBED TRACT OF LAND, DO HEREBY SET APART AND SUBDIVIDE THE SAME INTO LOTS AND STREETS (PRIVATE STREETS, PRIVATE RIGHTS-OF-WAY) AS SHOWN ON THE PLAT AND NAME SAID TRACT **CAMERON CROSSING SUBDIVISION**, AND DO HEREBY DEDICATE TO PUBLIC USE ALL THOSE PARTS OR PORTIONS OF SAID TRACT OF LAND DESIGNATED AS STREETS, THE SAME TO BE USED AS PUBLIC THROUGHFARES AND ALSO TO GRANT AND DEDICATE A PERPETUAL RIGHT AND EASEMENT OVER, UPON AND UNDER THE LANDS DESIGNATED HEREON AS PUBLIC UTILITY, STORM WATER DETENTION PONDS DRAINAGE EASEMENTS AND CANAL MAINTENANCE EASEMENT, THE SAME TO BE USED FOR THE INSTALLATION MAINTENANCE AND OPERATION OF PUBLIC UTILITY SERVICE LINE, STORM DRAINAGE FACILITIES, IRRIGATION CANALS OR FOR THE PERPETUAL PRESERVATION OF WATER CHANNELS IN THEIR NATURAL STATE WHICHEVER IS APPLICABLE AS MAY BE AUTHORIZED BY THE GOVERNING AUTHORITY, WITH NO BUILDINGS OR STRUCTURES BEING ERRECTED WITHIN SUCH EASEMENTS. AND HEREBY GRANT TEMPORARY TURN AROUND EASEMENTS AS SHOWN HEREON TO BE USED BY THE PUBLIC UNTIL SUCH TIME THAT THE ROAD IS EXTENDED, THE TEMPORARY TURN AROUND EASEMENT SHALL BE REVOKED AND NULLIFIED AT THE EVENT OF THE EXTENSION OF THE ROAD WITHOUT FURTHER WRITTEN DOCUMENT AND THE ENCUMBERED LAND WITHIN THE AFFECTED LOTS SHALL BE RELEASED FOR THE FULL AND EXCLUSIVE USE AND BENEFIT OF THE LOT OWNERS.

SIGNED THIS _____ DAY OF _____, 20____.

ACKNOWLEDGMENT

STATE OF UTAH)
)SS.
COUNTY OF _____)

ON THE _____ DAY OF _____, 20____, PERSONALLY APPEARED BEFORE ME, THE UNDERSIGNED NOTARY PUBLIC, _____ (AND) _____ SIGNER(S) OF THE ABOVE OWNER'S DEDICATION AND CERTIFICATION, WHO BEING BY ME DULY SWORN, DID ACKNOWLEDGE TO ME _____ SIGNED IT FREELY, VOLUNTARILY, AND FOR THE PURPOSES THEREIN MENTIONED.

COMMISSION EXPIRES NOTARY PUBLIC

ACKNOWLEDGMENT

STATE OF UTAH)
)SS.
COUNTY OF _____)

ON THE _____ DAY OF _____, 20____, PERSONALLY APPEARED BEFORE ME, THE UNDERSIGNED NOTARY PUBLIC, _____ (AND) _____ BEING BY ME DULY SWORN, ACKNOWLEDGED TO ME THEY ARE _____ AND _____ OF SAID CORPORATION AND THAT THEY SIGNED THE ABOVE OWNER'S DEDICATION AND CERTIFICATION FREELY, VOLUNTARILY, AND IN BEHALF OF SAID CORPORATION FOR THE PURPOSES THEREIN MENTIONED.

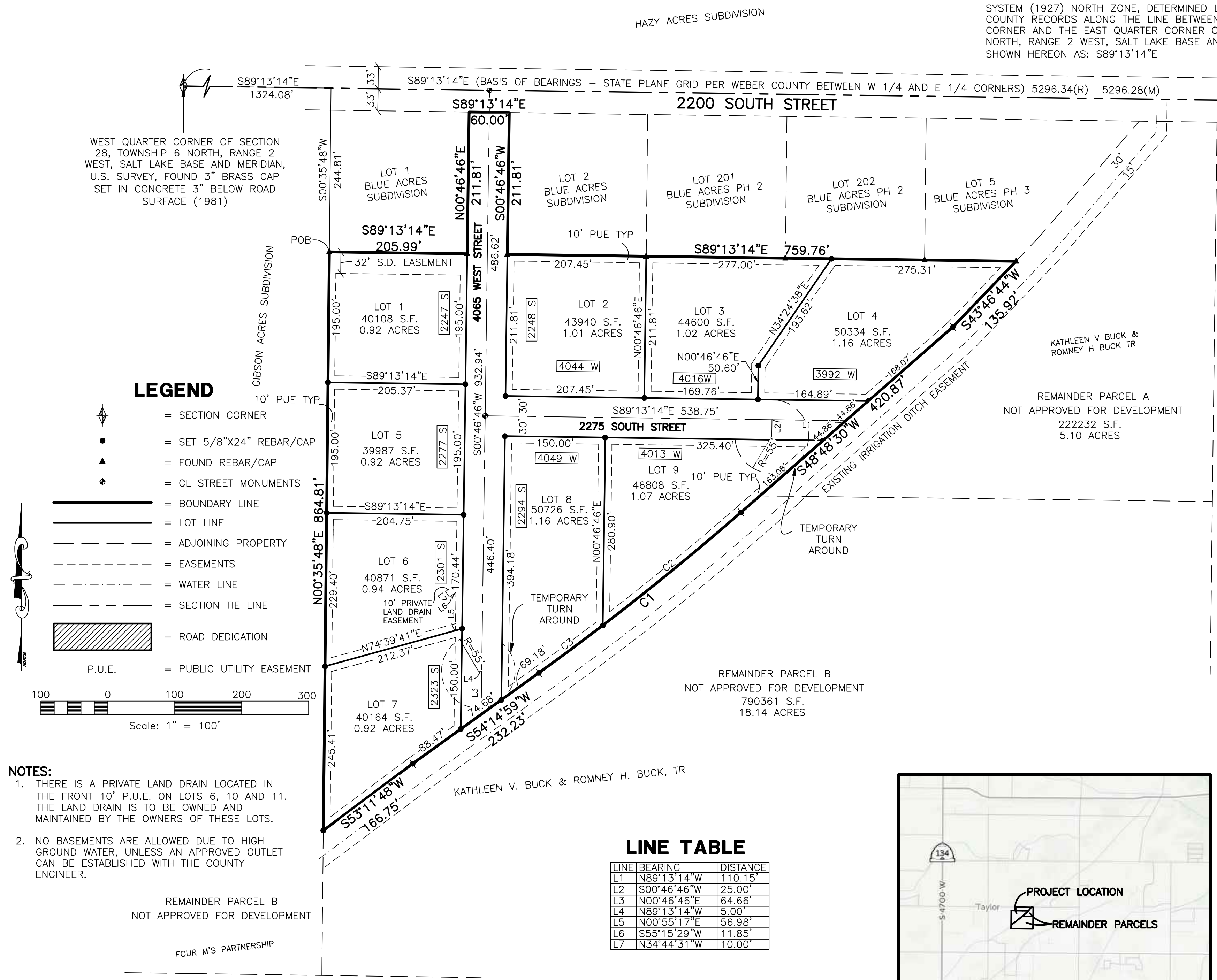
COMMISSION EXPIRES NOTARY PUBLIC

Project Info.

Surveyor: **R. KUNZ**
Designer: **R. KUNZ**
Begin Date: **10-01-13**
Name: **BLUE ACRES SUBDIVISION PHASE 4**
Number: **5036-01**
Revision: _____
Scale: **1"=100'**
Checked: _____



920 CHAMBERS STREET, SUITE 14, OGDEN, UTAH 84403
TEL: (801) 621-3100 FAX: (801) 621-2666 www.reeve-assoc.com



LEGEND

- SECTION CORNER
- SET 5/8"x24" REBAR/CAP
- FOUND REBAR/CAP
- CL STREET MONUMENTS
- BOUNDARY LINE
- LOT LINE
- ADJOINING PROPERTY
- EASEMENTS
- WATER LINE
- SECTION TIE LINE
- ROAD DEDICATION
- P.U.E. = PUBLIC UTILITY EASEMENT

Scale: 1" = 100'

NOTES:

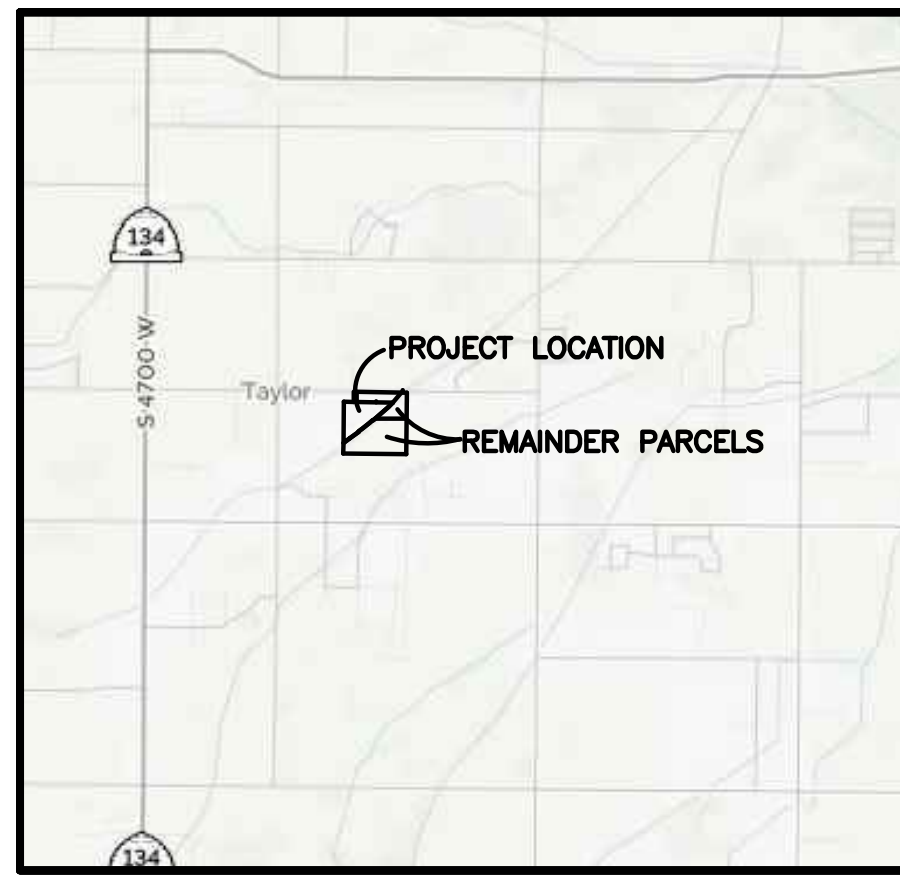
- THERE IS A PRIVATE LAND DRAIN LOCATED IN THE FRONT 10' P.U.E. ON LOTS 6, 10 AND 11. THE LAND DRAIN IS TO BE OWNED AND MAINTAINED BY THE OWNERS OF THESE LOTS.
- NO BASEMENTS ARE ALLOWED DUE TO HIGH GROUND WATER, UNLESS AN APPROVED OUTLET CAN BE ESTABLISHED WITH THE COUNTY ENGINEER.

LINE TABLE

LINE	BEARING	DISTANCE
L1	N89°13'14"W	110.15'
L2	S00°46'46"W	25.00'
L3	N00°46'46"E	64.66'
L4	N89°13'14"W	5.00'
L5	N00°55'17"E	58.98'
L6	S55°15'29"W	11.85'
L7	N34°44'31"W	10.00'

CURVE TABLE

#	RADIUS	ARC LENGTH	CHD LENGTH	TANGENT	CHD BEARING	DELTA
C1	4062.12'	385.78'	385.64'	193.04'	S5°13'45"W	5°26'29"
C2	4062.12'	266.90'	266.85'	133.50'	N50°41'26"E	3°45'52"
C3	4062.12'	118.88'	118.88'	59.45'	N53°24'41"E	1°40'37"



WEBER COUNTY PLANNING COMMISSION APPROVAL

THIS IS TO CERTIFY THAT THIS SUBDIVISION PLAT WAS DULY APPROVED BY THE WEBER COUNTY PLANNING COMMISSION. SIGNED THIS _____ DAY OF _____, 20____.

CHAIRMAN, WEBER COUNTY PLANNING COMMISSION

WEBER COUNTY ENGINEER

I HEREBY CERTIFY THAT THE REQUIRED PUBLIC IMPROVEMENT STANDARDS AND DRAWINGS FOR THIS SUBDIVISION CONFORM WITH THE COUNTY STANDARDS AND THE AMOUNT OF THE FINANCIAL GUARANTEE IS SUFFICIENT FOR THE INSTALLATION OF THESE IMPROVEMENTS.

WEBER COUNTY ENGINEER

WEBER COUNTY COMMISSION ACCEPTANCE

THIS IS TO CERTIFY THAT THIS SUBDIVISION PLAT, THE DEDICATION OF STREETS AND OTHER PUBLIC WAYS AND FINANCIAL GUARANTEE OF PUBLIC IMPROVEMENTS ASSOCIATED WITH THIS SUBDIVISION, THEREON ARE HEREBY APPROVED AND ACCEPTED BY THE COMMISSIONERS OF WEBER COUNTY, UTAH. SIGNED THIS _____ DAY OF _____, 20____.

CHAIRMAN, WEBER COUNTY COMMISSION

ATTEST

TITLE

WEBER COUNTY SURVEYOR

I HEREBY CERTIFY THAT THE WEBER COUNTY SURVEYOR'S OFFICE HAS REVIEWED THIS PLAT AND ALL CONDITIONS FOR APPROVAL BY THIS OFFICE HAVE BEEN SATISFIED. THE APPROVAL OF THIS PLAT BY THE WEBER COUNTY SURVEYOR DOES NOT RELIEVE THE LICENSED LAND SURVEYOR WHO EXECUTED THIS PLAT FROM THE RESPONSIBILITIES AND/OR LIABILITIES ASSOCIATED THEREWITH.

SIGNED THIS _____ DAY OF _____, 20____.

WEBER COUNTY SURVEYOR

WEBER COUNTY ATTORNEY

I HAVE EXAMINED THE FINANCIAL GUARANTEE AND OTHER DOCUMENTS ASSOCIATED WITH THIS SUBDIVISION PLAT, AND IN MY OPINION THEY CONFORM WITH THE COUNTY ORDINANCE APPLICABLE THERETO AND NOW IN FORCE AND AFFECT.

SIGNED THIS _____ DAY OF _____, 20____.

WEBER COUNTY ATTORNEY

DEVELOPER/OWNER

HAMLIN INVESTMENT
DOUG HAMLIN
P. O. BOX 625
ROY, UTAH 84067
801-725-3782

Weber County Recorder

Entry No. _____ Fee Paid _____
And Recorded, _____
At _____ in Book _____
Of The Official Records, Page _____
Recorded For: _____

Weber County Recorder

Deputy.