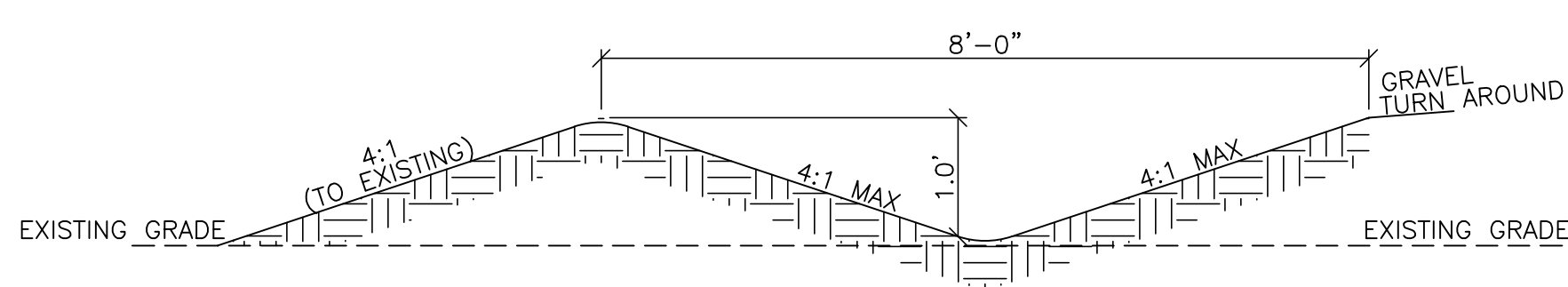
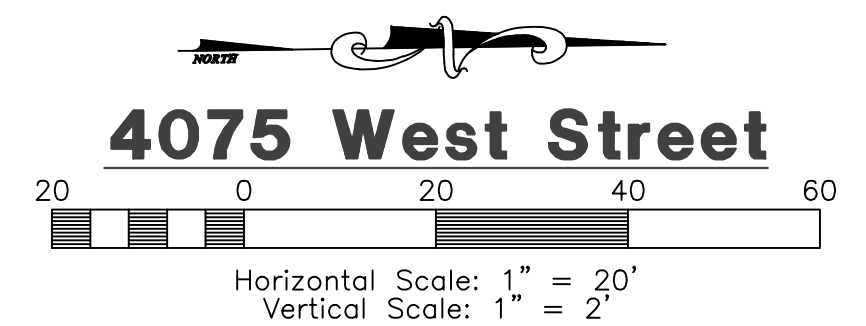


TEMPORARY TURNAROUND TO BE CONSTRUCTED PER WEBER COUNTY PUBLIC WORKS STANDARDS AND SPECIFICATIONS.



**Drainage Ditch**  
SCALE: NONE

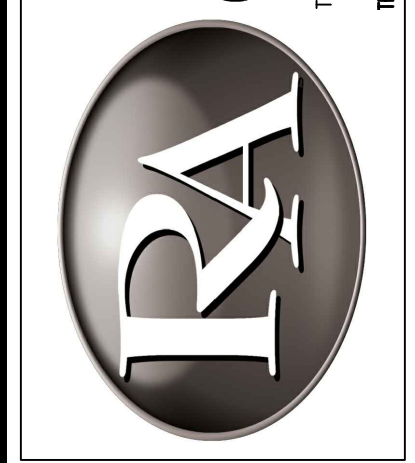


**4075 West Street**

**Construction Notes:**

- 1) ALL CONSTRUCTION IS TO CONFORM TO THE STANDARD DRAWINGS AND SPECIFICATIONS OF WEBER COUNTY.
- CULINARY WATER**  
W/10 - 10" PVC C-900 CLASS 200 WATER
- STORM DRAIN**  
SD/15 - 15" RCP STORM DRAIN  
SD/15 ARCH - 15" ARCH RCP STORM DRAIN
- SANITARY SEWER**  
SS/8 - 8" PVC C-900 SEWER LINE  
SS/12 - 12" PVC C-900 SEWER LINE
- SECONDARY WATER**  
SW/8 - 8" PVC C-900 SECONDARY WATER LINE
- LAND DRAIN**  
LD/12 - 12" PVC C-900 LAND DRAIN LINE

**Reeve & Associates, Inc.**  
920 CHAMBERS STREET, SUITE 14, OGDEN, UTAH 84403  
TEL: (801) 621-3100 FAX: (801) 621-2666 www.reeve-assoc.com  
LAND PLANNERS • CIVIL ENGINEERS • LAND SURVEYORS  
TRAFFIC ENGINEERS • STRUCTURAL ENGINEERS • LANDSCAPE ARCHITECTS



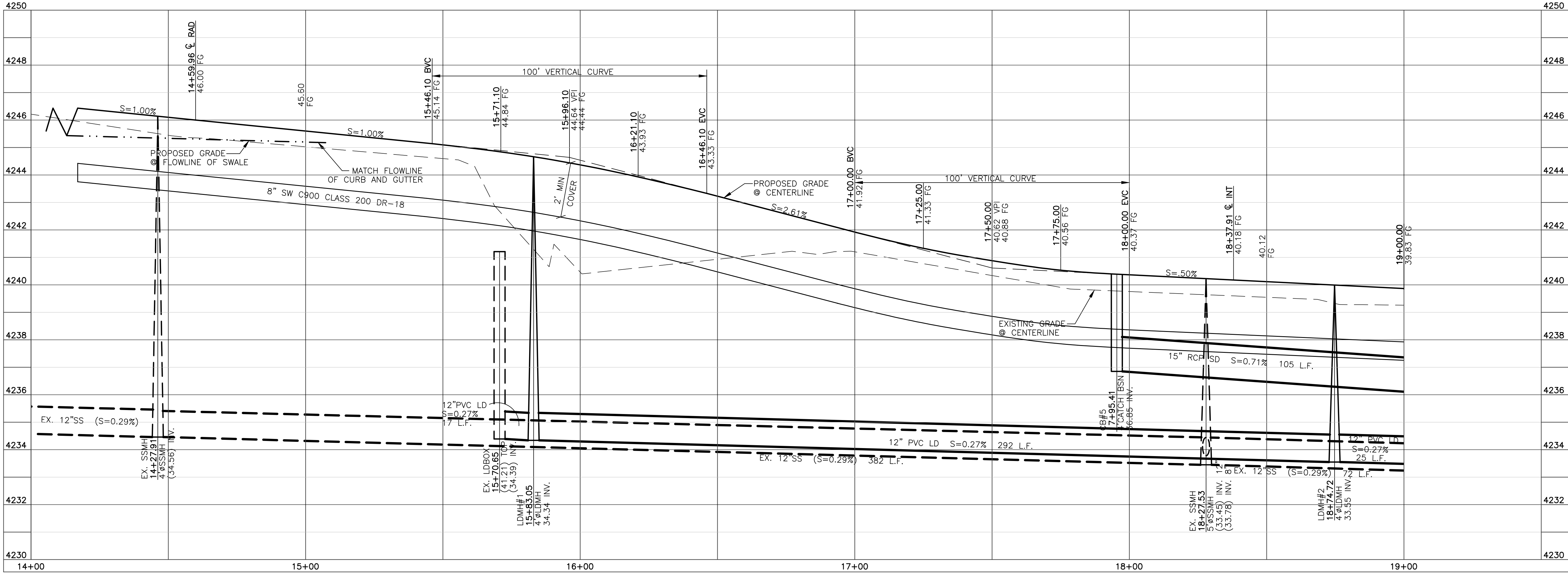
REVISIONS	DATE	DESCRIPTION
6-23-15	RH	County Comments
7-22-15	RH	County Comments
9-17-15	RH	County Comments
11-12-15	RH	County Comments
11-25-15	RH	County Comments
12-12-16	RH	Hooper, Irr. Cmmnt
1-17-17	RH	New Owner

**Cameron Crossing Subdivision**  
WEBER COUNTY, UTAH  
**4075 West Street**  
**14+00.00 - 19+00.00**

**Revised: 1-17-17**

**Project Info.**  
Engineer: J. NATE REEVE, P.E.  
Drafted: R. HANSEN  
Begin Date: JUNE 10, 2014  
Name: CAMERON CROSSING SUBDIVISION  
Number: 3442-A47

Blue Stakes Location Center  
**Call: Toll Free 1-800-662-4111**  
Two Working Days Before You Dig



Reeve & Associates, Inc. - Solutions You Can Build On

Reeve & Associates, Inc. - Solutions You Can Build On