

each sq = 5ft.

33

Bed 156
Kitchen-80
hall-60
Front rooms 204
50 bath=100

600^{sq ft}

+ shared utility

45

exterior stairs



45

33

45

UPSTAIRS
1850sq ft

58

PART OF THE S.W. 1/4 OF SECTION 22, T.7N., R.1E., S.L.B. & M.

PATIO SPRINGS UNIT NO. 1

LOTS 11 TO 26, 39, & A TO C

IN WEBER COUNTY

SCALE 1" = 80'

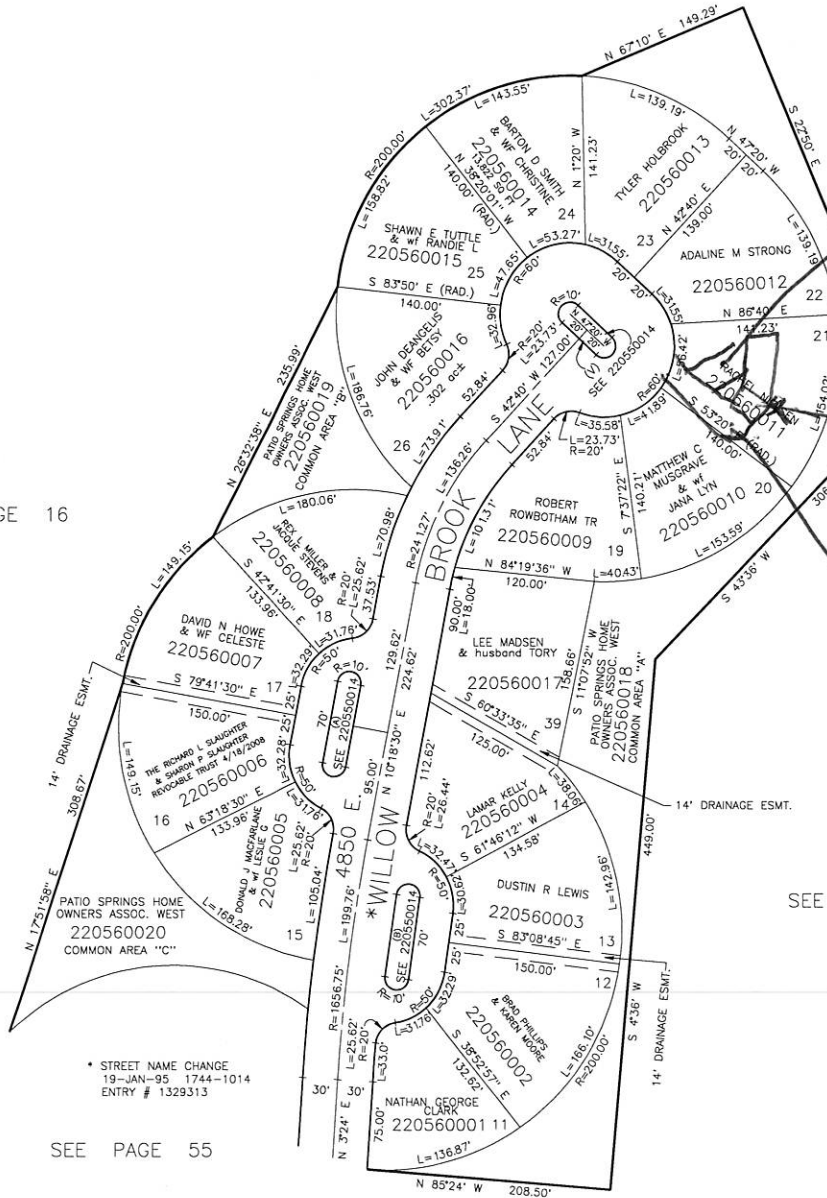
TAXING UNIT: 203

SEE PAGE 16

SEE PAGE 16

* STREET NAME CHANGE
19-JAN-95 1744-1014
ENTRY # 1329313

SEE PAGE 55



apartment parking space for 2-3 cars

garage

2 car space parking for owner at side of house