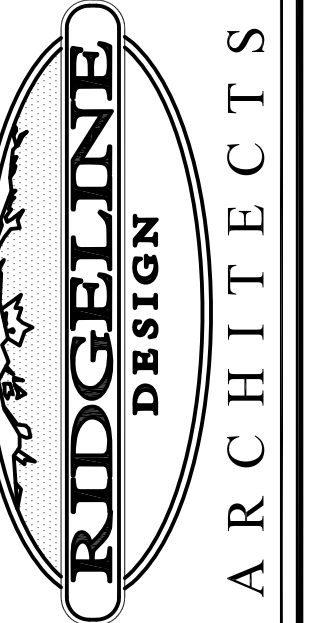


# DOG

## SHELL BUILDING

### 3500 EAST LIBERTY, UTAH

RIDGELINE DESIGN ARCHITECTS  
 1708 EAST 5550 SOUTH #20  
 SOUTH OGDEN, UT 84403  
 PHONE: 801-392-6882 FAX: 801-621-1494  
 www.ridgeline-design.com



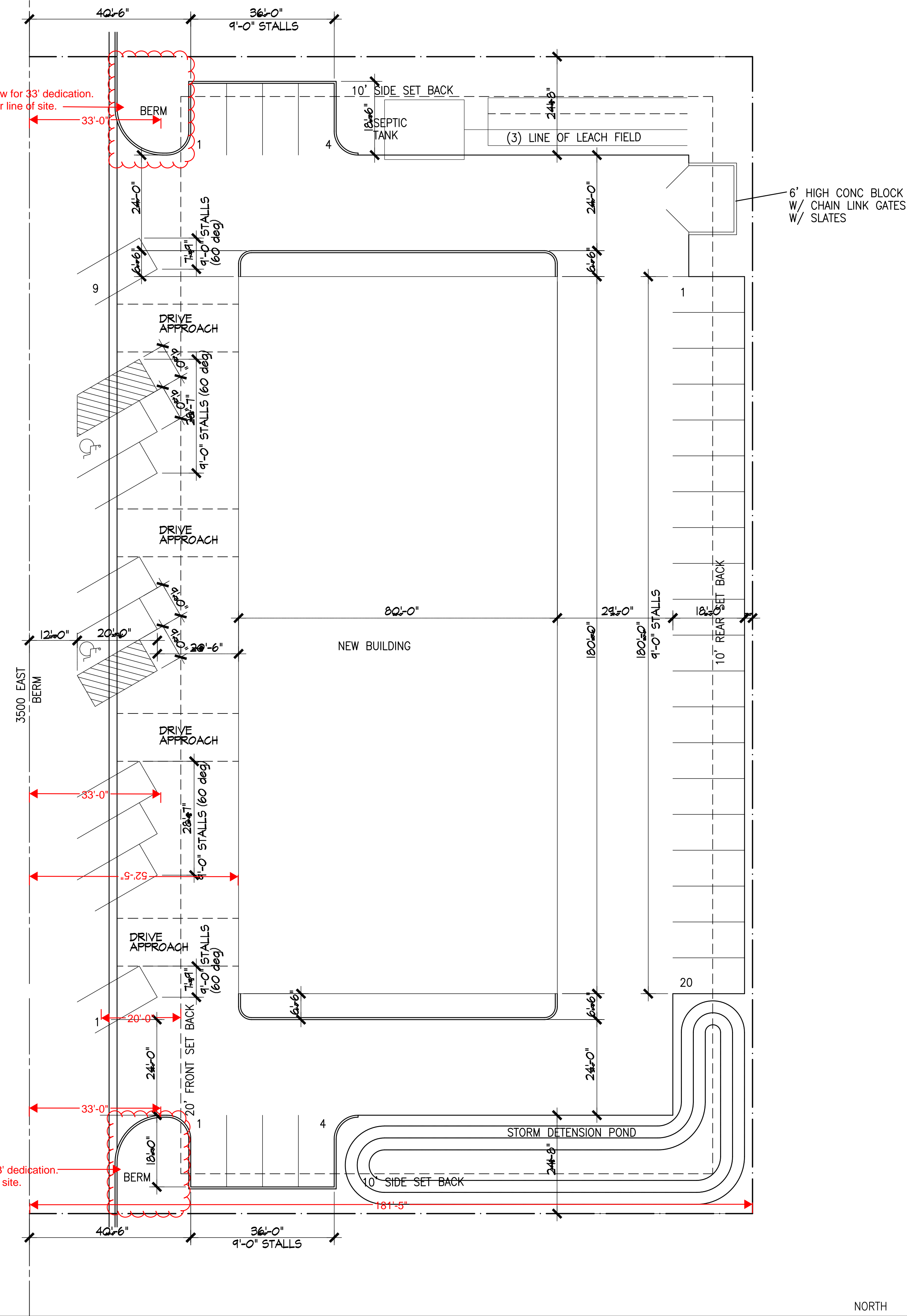
Stamp:  
 Date:  
 9/11/2014  
 Revisions:

DOG  
 BUILDING SHELL  
 3500 EAST LIBERTY, UTAH

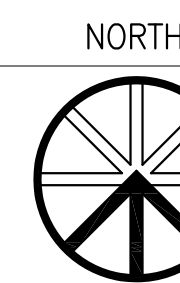
Project Number:  
 1444

Sheet Title:  
 COVER SHEET

Sheet:  
 C-0



SITE PLAN  
 SCALE 1"=10'-0"



#### CODE SUMMARY

OCCUPANCY TYPE:	B/S-1
CONSTRUCTION TYPE:	V B
MAXIMUM NO. STORIES:	2
MAXIMUM HEIGHT:	40 FT
ALLOWABLE AREA:	9,000 SQ FT
SPRINKLERED:	NO
YARD INCREASE:	YES ALLOWABLE INCREASE .75 9,000 SQ FT X .75 = 6,750
MAX ALLOWABLE AREA:	9,000 + 6750 = 15750 SQ FT
STRUCTURAL FRAME:	0
BEARING WALL EXTERIOR:	0
INTERIOR:	0
NONBEARING WALL:	0
FLOOR /CEILING:	0
ROOF/CEILING:	0

#### BUILDING SUMMARY

NO. STORIES:	1 STORY
MAXIMUM HEIGHT:	35'-0" REQUIRED
MAXIMUM HEIGHT:	35'-0" PROVIDED
FLOOR PLAN AREA:	12,600 SQ FT
LANDSCAPE AREA 20%:	10,492 SQ FT REQUIRED
LANDSCAPE AREA:	10,645 SQ FT PROVIDED
PARKING:	30 REQUIRED 4 CLIENTS 46 PROVIDED 6 EMPLOYEES
SNOW LOAD:	30#/SQ FT
WIND LOAD:	90#/SQ FT

#### APPLICABLE CODE

- 2012 INTERNATIONAL BUILDING CODE
- 2012 INTERNATIONAL PLUMBING CODE
- 2012 INTERNATIONAL MECHANICAL CODE
- 2012 INTERNATIONAL FUEL GAS CODE
- 2011 NATIONAL ELECTRICAL CODE
- 2012 INTERNATIONAL FIRE CODE
- 2012 INTERNATIONAL ENERGY CONSERVATION CODE
- 1997 UNIFORM CODE FOR BUILDING CONSERVATION