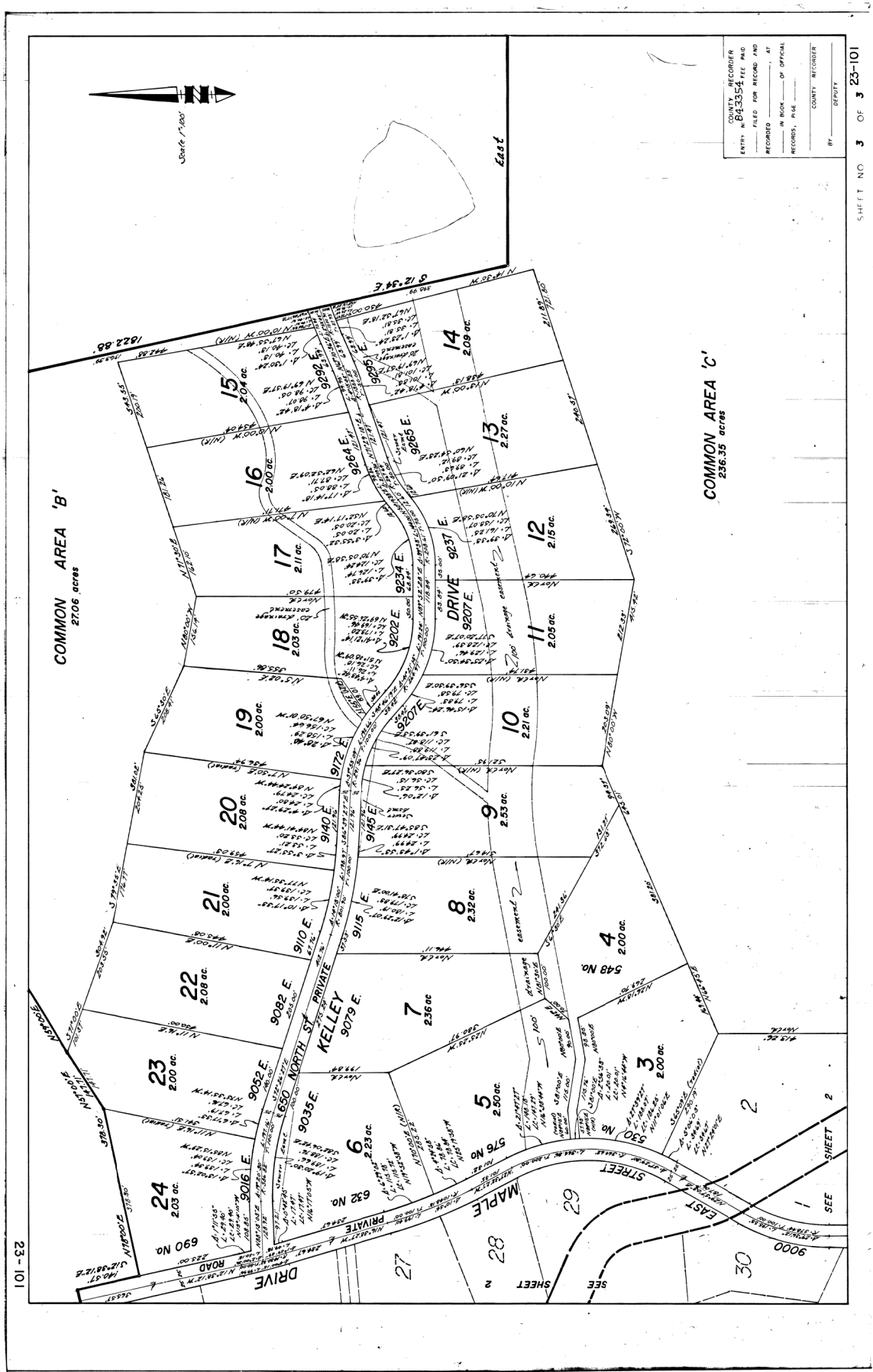






# Exhibit A-Original Plat



COUNTY RECORDER  
 ENTRY N. BE3354  
 FILED FOR RECORD AND  
 RECORDED AT  
 IN BOOK OF OPTICAL  
 RECORDS, PAGE  
 COUNTY RECORDER  
 BY DEPUTY

SHEET NO 3 OF 3 23-101

23-101



