

## Ewert, Charles

---

**From:** Jason Thomas [jthomas@snowbasin.com]  
**Sent:** Thursday, October 16, 2014 11:31 AM  
**To:** Ewert, Charles  
**Subject:** Snowbasin Guidance sign application addendum  
**Attachments:** Snowbasin guidance sign location.jpg; Sign engineered design.pdf; Guidance sign concept 1.jpg; From Centerline perspective.JPG; End of State Maintenance Perspective.JPG; Across the road perspective.JPG

Please disregard the original request for the Monument sign, (#1) on the application. We would like to instead put a guidance sign at this location. The guidance sign will be 8 feet wide and 9 feet tall. It will be installed in a log and masonry frame that is 18 feet high and 12 feet wide. There will be no lighting and natural landscaping. The sign location is marked with a purple dot beside the #1 on the sign location plot. The nearest corner of the sign would be 40 feet from the edge of the asphalt east of Snowbasin road on a 5 foot high natural terraced area. This puts it 60 feet from the centerline. I have attached the concept drawing, an engineered plan, photos of the perspective from the road and an overview of the layout.

PS. Would you please forward this to Chad. I am having trouble getting his email to go through.

Thank you for your consistent help with this project,  
JT  
801-436-4961

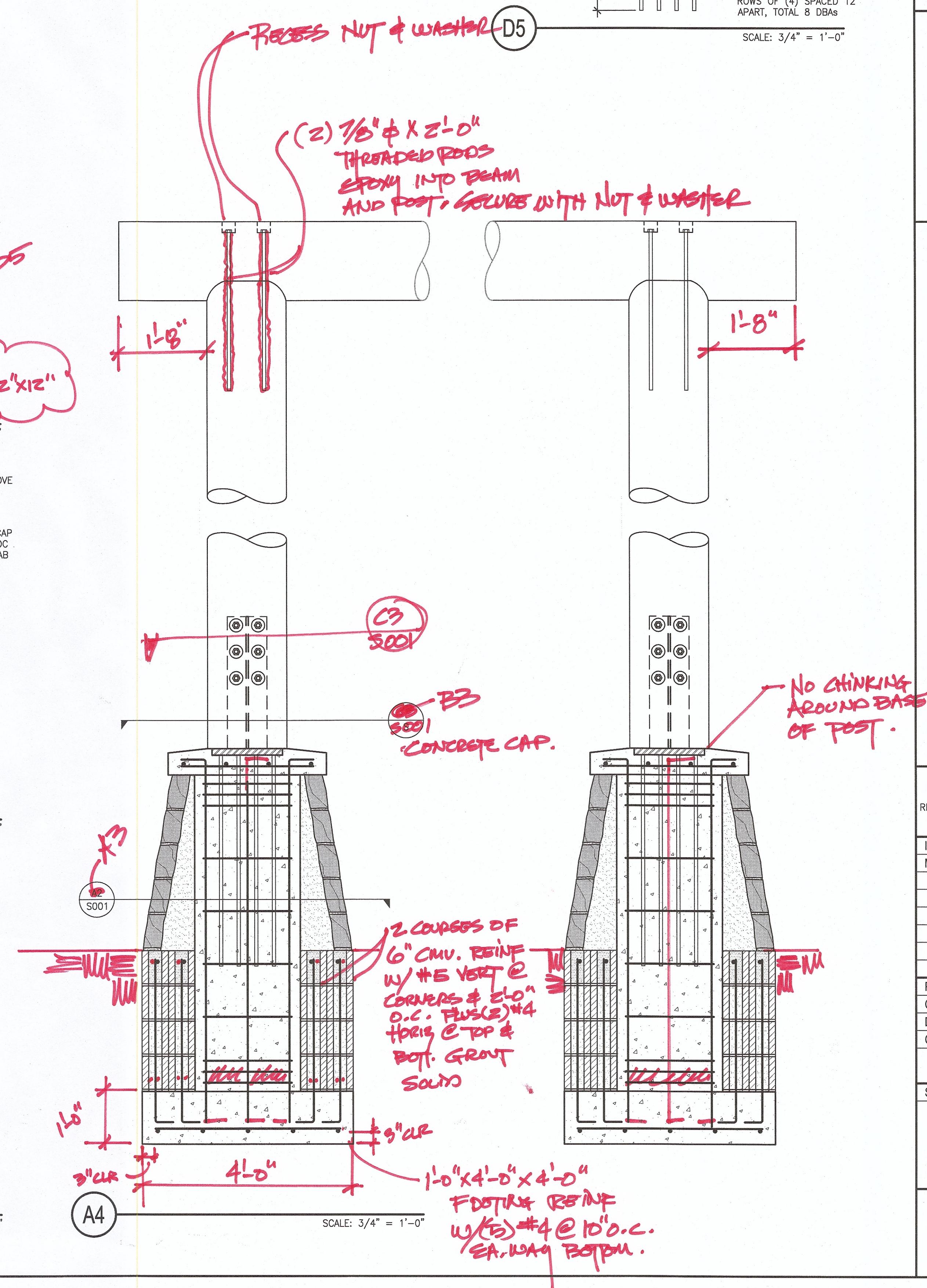




snowbasin







ALL DRAWINGS, PLANS AND DETAILS ARE INSTRUMENTS OF SERVICE AND SHALL REMAIN THE PROPERTY OF CALDER RICHARDS CONSULTING ENGINEERS AND ARE NOT SUITABLE FOR REUSE OR INTENDED FOR ANY OTHER PROJECT.

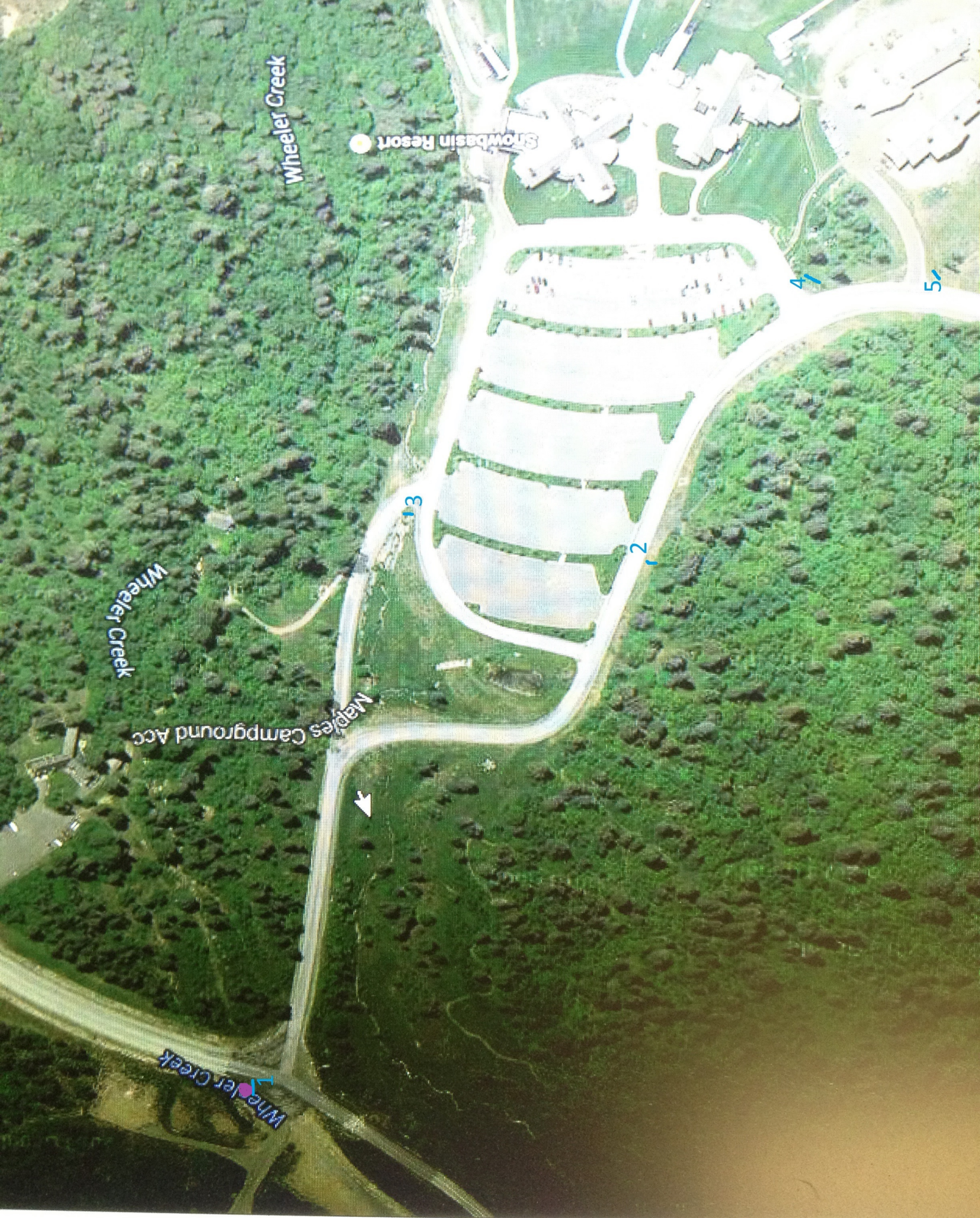
<b>ISSUE:</b>		
AUGUST 27, 2014		
<b>MARK</b>	<b>DATE</b>	<b>DESCRIPTION</b>
<b>PROJECT NO.:</b> 14010.40		
<b>CAD DWG FILE:</b> S001.DWG		
<b>DRAWN BY:</b>		DRAWN
<b>CHECKED BY:</b>		CHECKED

1	SHEET TITLE
---	-------------

## NON-STRUCTURAL SEISMIC BRACING DETAILS

S001





Wheeler Creek

Snowbasin Resort

Wheeler Creek

Maples Campground Acc.

Wheeler Creek

1

2

4

5









END  
STATE  
MAINTENANCE



