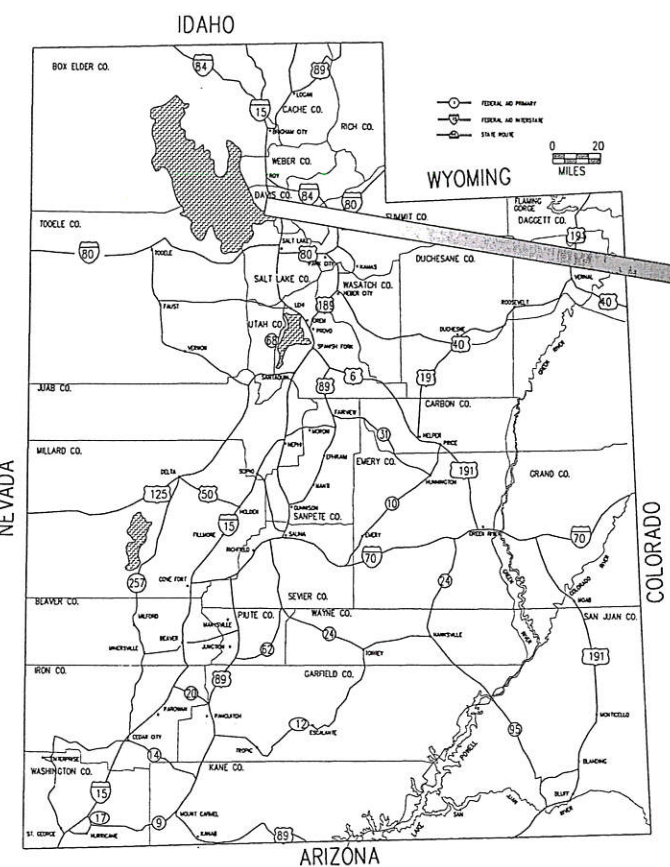
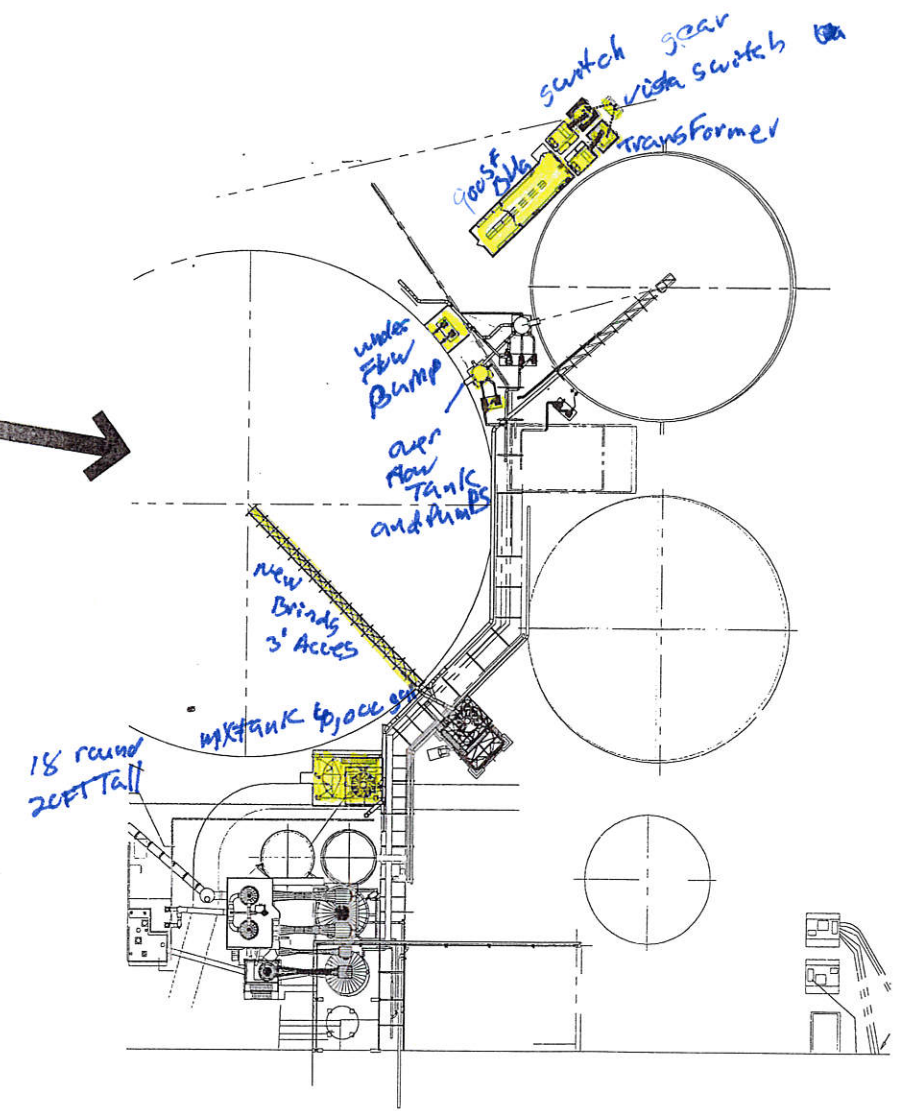


REVISION HISTORY				
REV	ZONE	DESCRIPTION	DATE	APPROVED
0		ISSUED FOR CONSTRUCTION	9/23/2014	

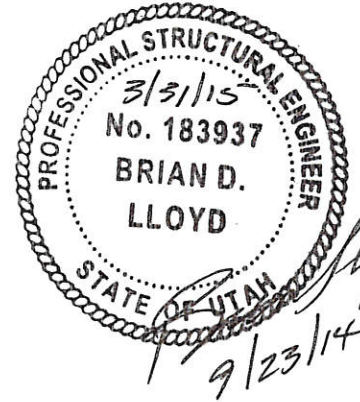
DRAWING INDEX	
DWG NO.	TITLE
C-100	FOUNDATION LAYOUT
C-101	F-1 FOUNDATION
C-103	F-3 FOUNDATION
C-104	F-4 FOUNDATION
C-105	CY1201 FOUNDATION
C-106	CONC. DEMO & REPAIR
C-107	MCC BUILDING FOUNDATIONS
C-108	MCC BUILDING FOUNDATIONS
C-109	TRANSFORMER & SWITCHGEAR CONC.
C-110	SWITCHGEAR & VISTA SWITCH VAULT
C-111	MCC GRADING & ASPHALT LAYOUT
G-101	CY1201 ARRANGEMENT
G-102	CY1201 ARRANGEMENT
M-100	TANK 1220 LAYOUT
M-101	TANK 1220 LAYOUT
M-102	TANK 1220 NOZZLES
M-200	TANK 1201 LAYOUT
M-201	TANK 1201 BOTTOM PLATES
M-202	TANK 1201 BAFFLES
M-203	TANK 1201 MANWAY
M-205	TANK 1201 ANCHOR CHAIR
M-206	TANK 1201 LAYOUT
S-100	GENERAL NOTES
S-101	CY1201 STRUCTURAL FRAME
S-102	CY1201 STRUCTURAL FRAME
S-103	CY1201 STRUCTURAL FRAME
S-104	CY1201 STRUCTURAL FRAME
S-106	CY1201 STRUCTURAL FRAME
S-107	CY1201 STRUCTURAL FRAME
S-108	CY1201 STRUCTURAL FRAME
S-200	MCC BUILDING DOOR, FINISH, CEILING
S-201	MCC BUILDING
S-202	MCC BUILDING



UTAH VICINITY MAP



PROJECT SITE



ISSUED FOR CONSTRUCTION

IRISUN TECHNOLOGIES
 357 WEST 6160 SOUTH
 SALT LAKE CITY, UTAH 84107 Ph (801)281-2929

Compass Minerals 765 NORTH 10300 WEST, OGDEN UT 84404
 PH (801)731-3100 FX (801)731-4551

TITLE
THICKENER TH001 UPGRADE COVER SHEET

NEXT HIGHER ASSEMBLY	TOLERANCE UNLESS OTHERWISE INDICATED	DRAWN BY	DATE
	FRACTIONS: ± 1/16	J. PARKER	2/25/14
	.X ± .1	CHECKED BY	DATE
	.XX ± .05	B. LLOYD	9/11/14
	.XXX ± .010	GSL ENG/SUPV	DATE
	.XXXX ± .0005	G. HYDE	9/19/14
	ANGLES: ± 5'	PROJECT ENGINEER	DATE
		P. HEUN	9/11/14

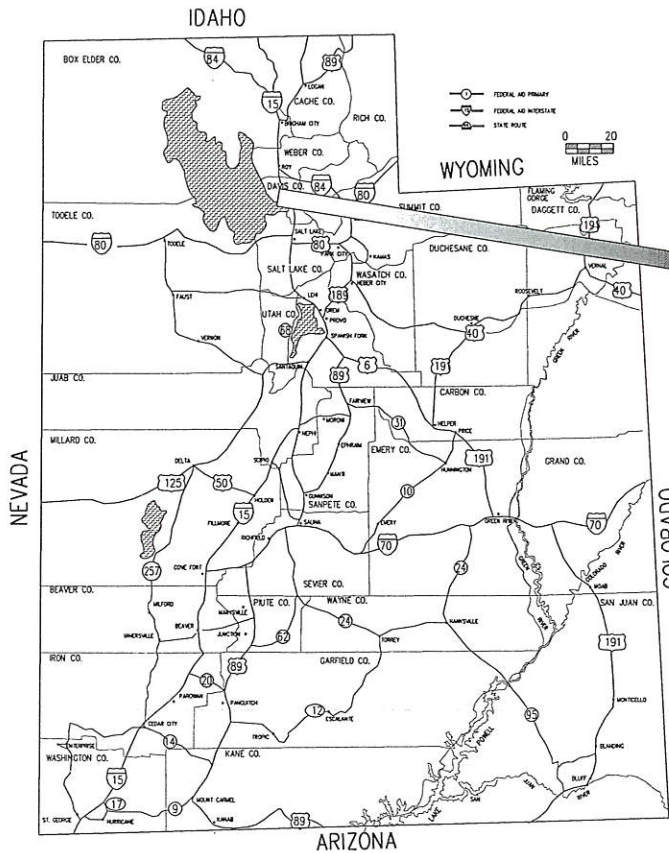
SIZE	DWG NO	REV
D	140209-G-001	0
SCALE AS NOTED	CAR#	SHEET 1 OF 1

THIS DRAWING IS THE PROPERTY OF GREAT SALT LAKE MINERALS, A DIVISION OF COMPASS MINERALS INTERNATIONAL, INC. MAY NOT BE COPIED OR DISTRIBUTED WITHOUT WRITTEN PERMISSION FROM COMPASS MINERALS.

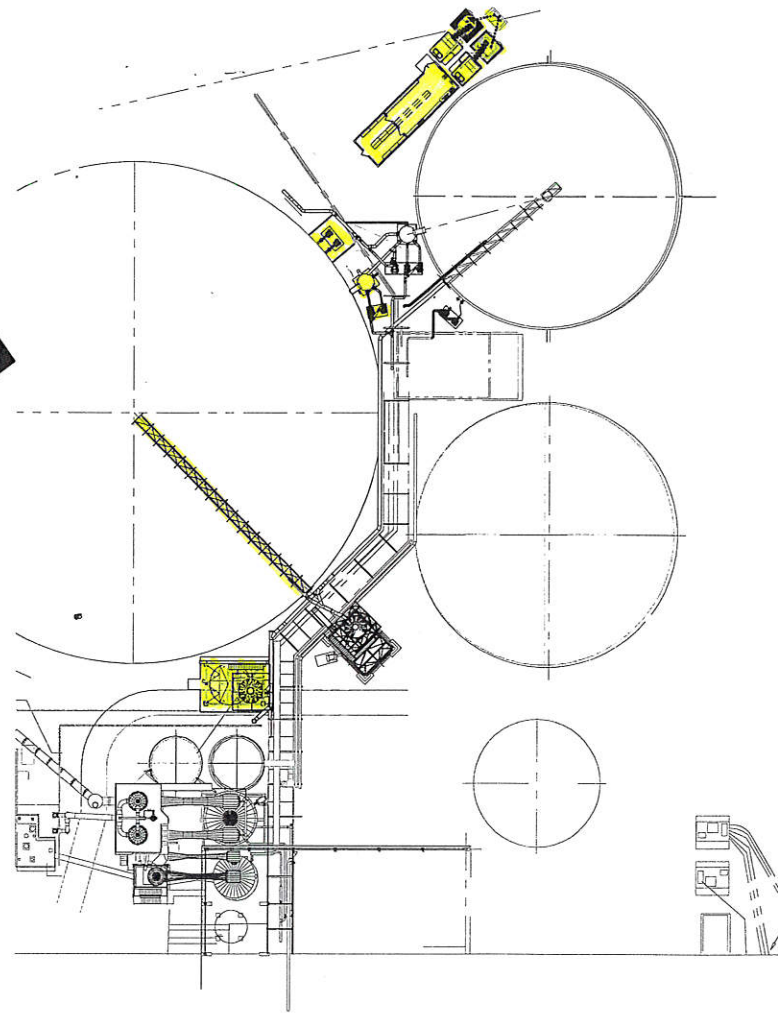


REVISION HISTORY				
REV	ZONE	DESCRIPTION	DATE	APPROVED
0		ISSUED FOR CONSTRUCTION	9/23/2014	

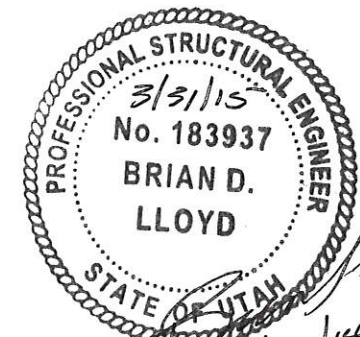
DRAWING INDEX	
DWG NO.	TITLE
C-100	FOUNDATION LAYOUT
C-101	F-1 FOUNDATION
C-103	F-3 FOUNDATION
C-104	F-4 FOUNDATION
C-105	CY1201 FOUNDATION
C-106	CONC. DEMO & REPAIR
C-107	MCC BUILDING FOUNDATIONS
C-108	MCC BUILDING FOUNDATIONS
C-109	TRANSFORMER & SWITCHGEAR CONC.
C-110	SWITCHGEAR & VISTA SWITCH VAULT
C-111	MCC GRADING & ASPHALT LAYOUT
G-101	CY1201 ARRANGEMENT
G-102	CY1201 ARRANGEMENT
M-100	TANK 1220 LAYOUT
M-101	TANK 1220 LAYOUT
M-102	TANK 1220 NOZZLES
M-200	TANK 1201 LAYOUT
M-201	TANK 1201 BOTTOM PLATES
M-202	TANK 1201 BAFFLES
M-203	TANK 1201 MANWAY
M-205	TANK 1201 ANCHOR CHAIR
M-206	TANK 1201 LAYOUT
S-100	GENERAL NOTES
S-101	CY1201 STRUCTURAL FRAME
S-102	CY1201 STRUCTURAL FRAME
S-103	CY1201 STRUCTURAL FRAME
S-104	CY1201 STRUCTURAL FRAME
S-106	CY1201 STRUCTURAL FRAME
S-107	CY1201 STRUCTURAL FRAME
S-108	CY1201 STRUCTURAL FRAME
S-200	MCC BUILDING DOOR, FINISH, CEILING
S-201	MCC BUILDING
S-202	MCC BUILDING



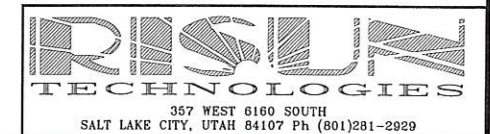
UTAH VICINITY MAP



PROJECT SITE



ISSUED FOR CONSTRUCTION



Compass Minerals 765 NORTH 10500 WEST, OGDEN UT 84404
PH (501)731-3100 FX (501)731-6531

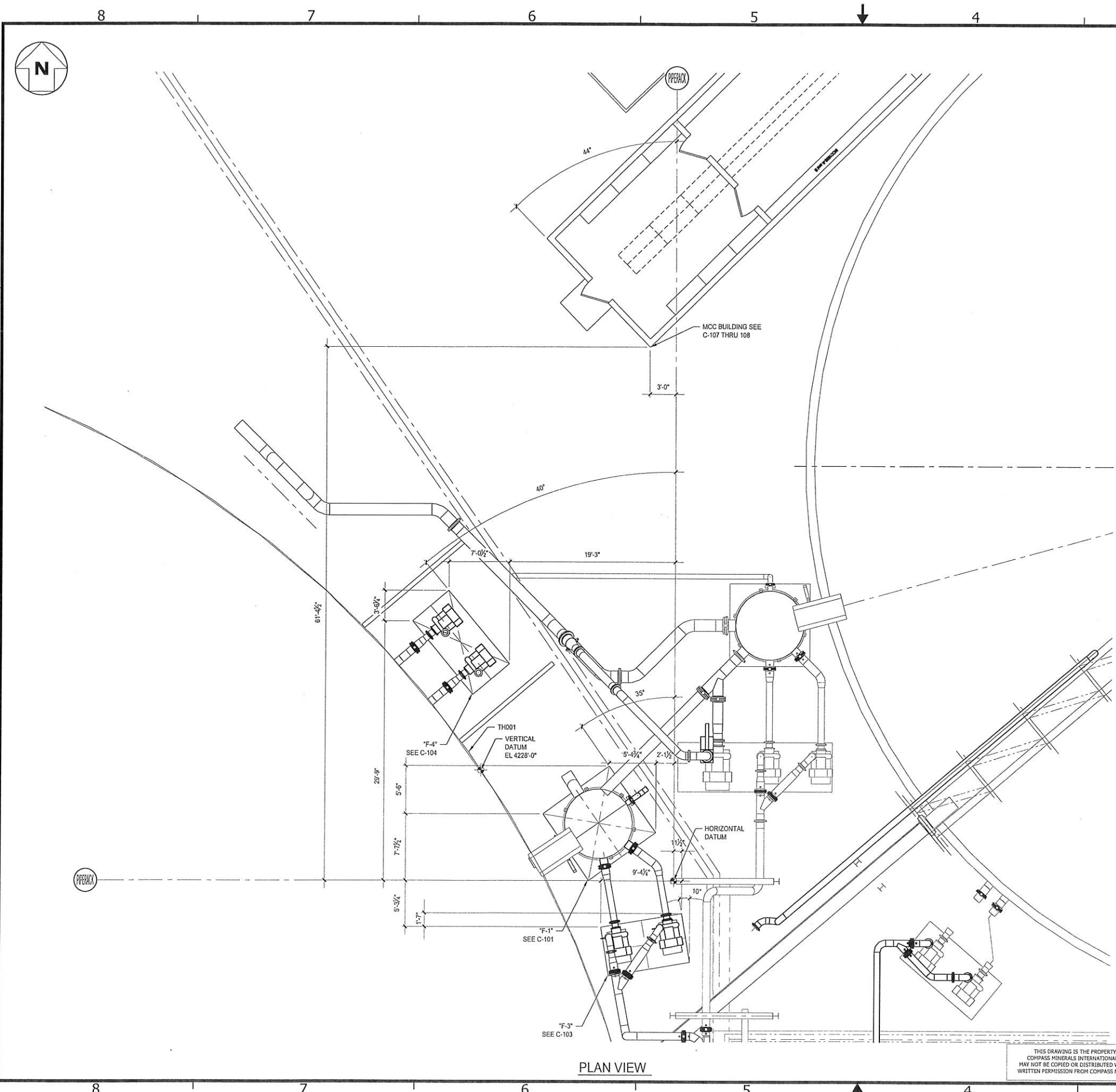
TITLE
**THICKENER TH001 UPGRADE
COVER SHEET**

SIZE DWG NO
D 140209-G-001

SCALE AS NOTED CAR# SHEET 1 OF 1

NEXT HIGHER ASSEMBLY	TOLERANCE UNLESS OTHERWISE INDICATED	DRAWN BY	DATE
	FRACTIONS: ± 1/16	J. PARKER	2/25/14
	.X = ± .1	CHECKED BY	DATE
	.XX = ± .05	B. LLOYD	9/11/14
	.XXX = ± .010	GSL ENG/SUPV	DATE
	.XXXX = ± .0005	G. HYDE	9/19/14
	ANGLES: ± .5	PROJECT ENGINEER	DATE
		P. HEUN	9/11/14

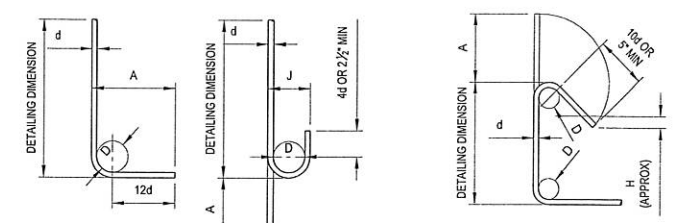
THIS DRAWING IS THE PROPERTY OF GREAT SALT LAKE MINERALS, A DIVISION OF COMPASS MINERALS INTERNATIONAL, INC. MAY NOT BE COPIED OR DISTRIBUTED WITHOUT WRITTEN PERMISSION FROM COMPASS MINERALS.



REVISION HISTORY				
REV	ZONE	DESCRIPTION	DATE	APPROVED
0		ISSUED FOR CONSTRUCTION	9/23/2014	

BAR SIZE	$f'c = 5,000 \text{ psi}$						$f_y = 60,000 \text{ psi}$		HOOKED DEVELOPMENT (USING STD 90° HOOKS)
	STRAIGHT DEVELOPMENT		SPICES				COMPRESSION		
	OTHER BARS (U)	TOP BARS (U L)	CLASS A		CLASS B		DEVELOP	SPLICE	
#3	12"	12"	12"	12"	12"	15"	8"	12"	6"
#4	12"	15"	12"	15"	15"	20"	10"	16"	7"
#5	15"	19"	15"	19"	19"	25"	12"	19"	9"
#6	18"	23"	18"	23"	23"	29"	15"	23"	10"
#7	25"	33"	25"	33"	33"	43"	17"	27"	12"
#8	29"	37"	29"	37"	37"	49"	19"	30"	14"
#9	33"	42"	33"	42"	42"	55"	22"	34"	15"
#10	37"	48"	37"	48"	48"	62"	25"	39"	17"
#11	45"	58"	45"	58"	58"	75"	27"	43"	19"

DEVELOPMENT & SPLICE LENGTHS



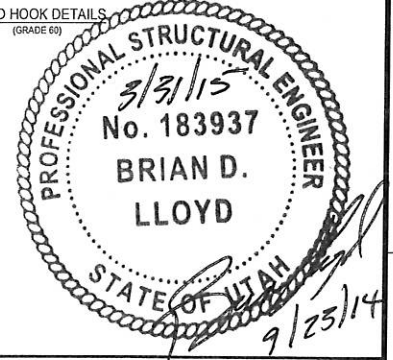
BAR SIZE	D	90° HOOK S			180° HOOKS	
		90° HOOK S		180° HOOKS		
		A	J	A	J	
#3	2 1/2"	6"	3"	5"	5"	
#4	3"	8"	4"	6"	6"	
#5	3 1/2"	10"	5"	7"	7"	
#6	4 1/2"	11-0"	6"	8"	8"	
#7	5 1/2"	11-2"	7"	10"	10"	
#8	6"	11-4"	8"	11"	11"	
#9	9 1/2"	11-7"	11 1/2"	11-3"	11-3"	
#10	10 1/2"	11-10"	11-10"	11-5"	11-5"	
#11	12"	12-0"	11-2 1/2"	11-7"	11-7"	

BAR SIZE	D	90° HOOK S			135° HOOKS	
		90° HOOK S		135° HOOKS		
		A	A	H	H	
#3	1 1/2"	4"	5"	3 1/2"	3 1/2"	
#4	2"	4 1/2"	6 1/2"	4 1/2"	4 1/2"	
#5	2 1/2"	6"	8"	5 1/2"	5 1/2"	
#6	3 1/2"	8"	11"	6 1/2"	6 1/2"	
#7	4 1/2"	10"	14"	8 1/2"	8 1/2"	
#8	5 1/2"	12"	16"	10 1/2"	10 1/2"	

STANDARD HOOK DETAILS (GRADE 60)

NOTES:

- FOR GENERAL STRUCTURAL STEEL NOTES, SEE DRAWING S-100.
- ALL STEEL AND ANCHOR BOLTS SHALL BE G-60 GALVANIZED. REPAIR ALL DEFECTS OR DAMAGED AREAS WITH COLD GALVANIZING SPRAY TO G-60 LEVEL AS INDICATED BY SPRAY MANUFACTURE.
- TANK TH001 FOUNDATION UNDER WALKWAY ASSUMED TO BE 4228'-0" AS INDICATED IN EXISTING DRAWINGS.
- ALL REBAR TO BE EPOXY COATED.
- ALL TANK ANCHOR BOLTS SHALL BE 3/4" Ø WITH 9" MIN EMBED CAST IN PLACE OR POST INSTALLED ANCHORS MAY BE USED AT CONTRACTORS OPTION. SEE GSM FOR ACCEPTABLE POST INSTALLED ANCHORS. CONTRACTOR TO COORDINATE ANCHOR BOLT LENGTH W TANK.
- FRAMING MEMBERS SHALL HAVE CLIP ANGLES (5/16" MIN THICK) OR END PLATES (3/8" MIN THICK).
- DETAILS SHOWN ON THIS DRAWING SHALL PREVAIL UNLESS NOTED OTHERWISE ON DESIGN DRAWINGS.
- REFER TO AIC318-08 FOR ADDITIONAL REQUIREMENT AND CLARIFICATIONS.



ISSUED FOR CONSTRUCTION

NEXT HIGHER ASSEMBLY	TOLERANCE UNLESS OTHERWISE INDICATED	DRAWN BY	DATE
	FRACTIONS: ± 1/16 .X = ± .1 .XX = ± .05 .XXX = ± .010 .XXXX = ± .0005	J. PARKER	2/25/14
	ANGLES: ± .5	CHECKED BY	DATE
		B. LLOYD	8/19/2014
		GSL ENG/SUPV	DATE
		G. HYDE	9/19/14
		PROJECT ENGINEER	DATE
		P. HEUN	8/18/2014

RISUN TECHNOLOGIES
357 WEST 6160 SOUTH
SALT LAKE CITY, UTAH 84107 Ph (801)281-2929

Compass Minerals 765 NORTH 10300 WEST, OGDEN UT 84404
PH (801) 731-3100 FX (801) 731-4551

TITLE: THICKENER TH001 UPGRADE FOUNDATION LAYOUT PLAN

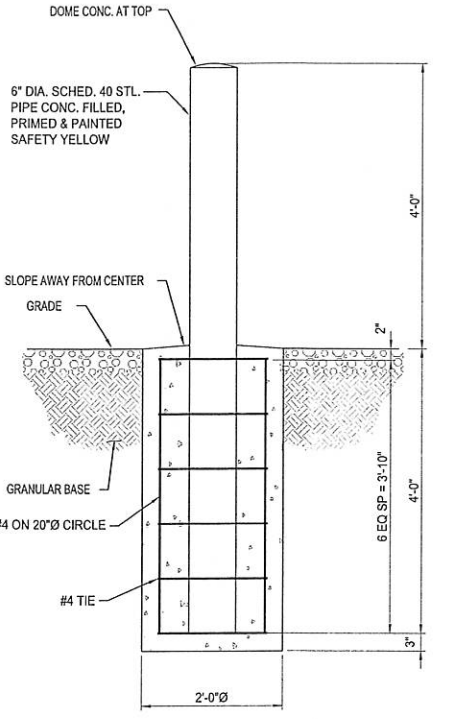
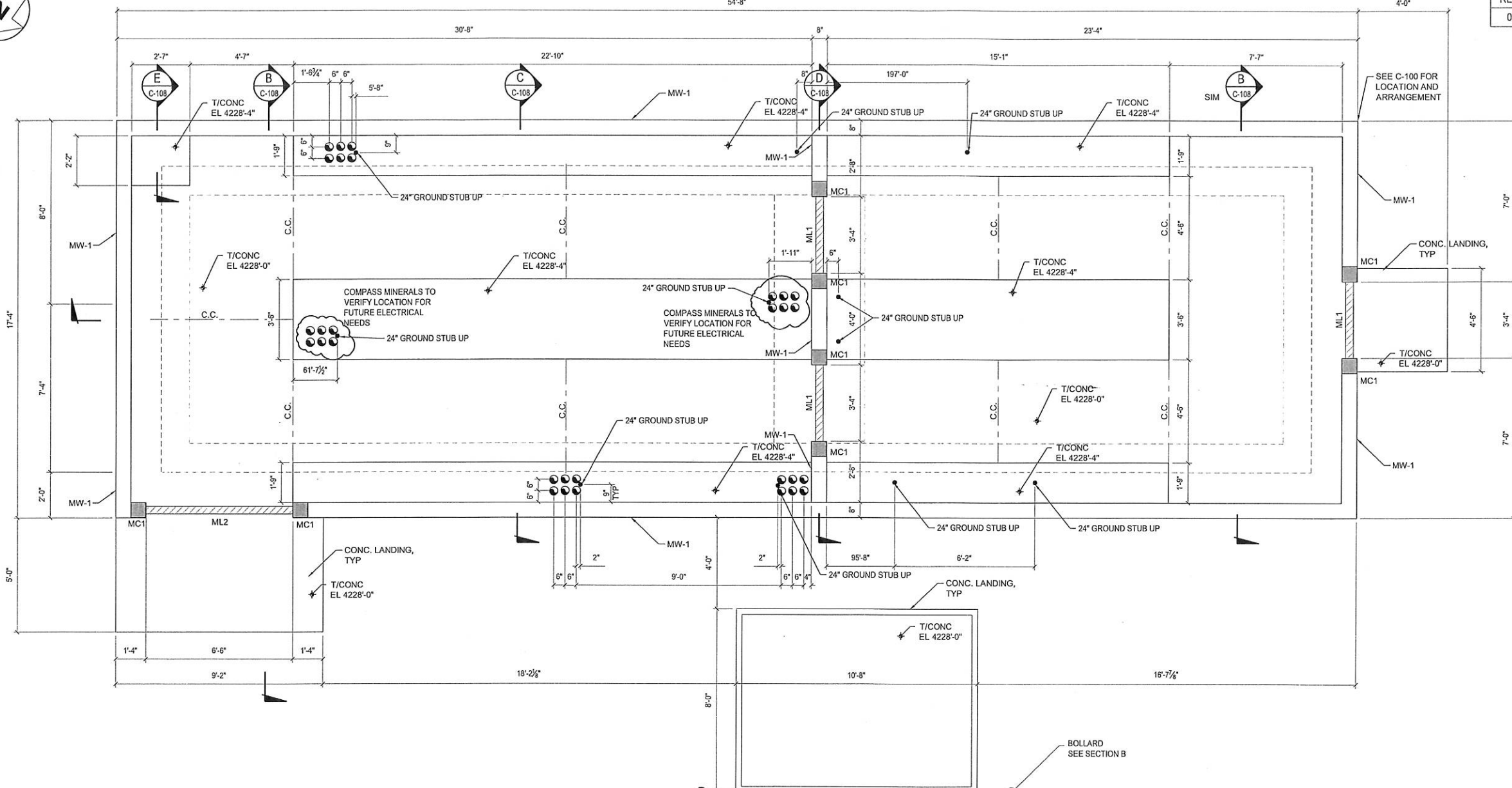
SIZE: DWG NO. D 140209-C-100 REV 0

SCALE: AS NOTED CAR# SHEET 1 OF 1

THIS DRAWING IS THE PROPERTY OF COMPASS MINERALS INTERNATIONAL, INC. MAY NOT BE COPIED OR DISTRIBUTED WITHOUT WRITTEN PERMISSION FROM COMPASS MINERALS.

REVISION HISTORY				
REV	ZONE	DESCRIPTION	DATE	APPROVED
0		ISSUED FOR CONSTRUCTION	9/23/2014	

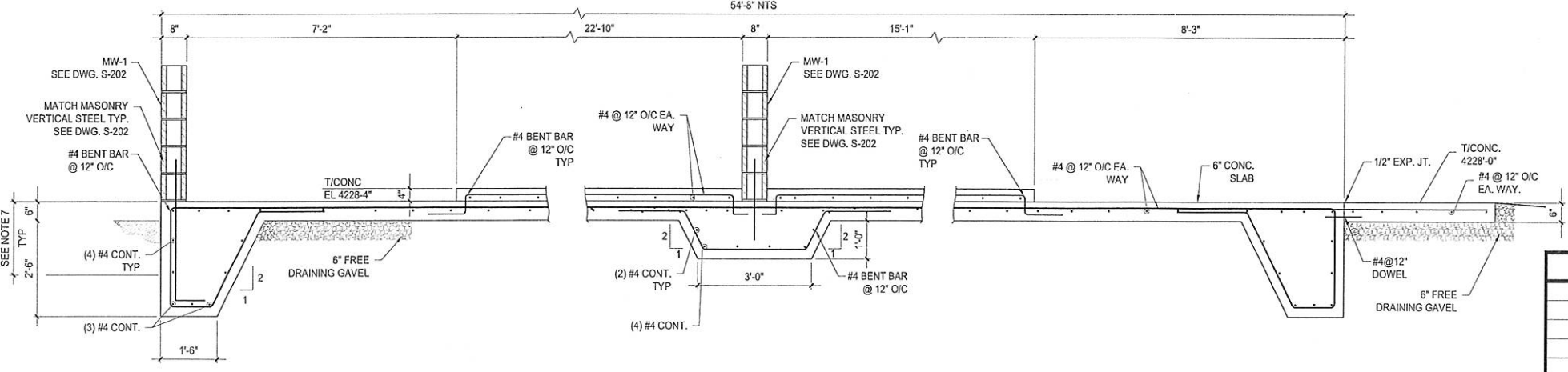
- NOTES:**
- CONTRACTOR TO FIELD VERIFY ALL DIMENSIONS.
 - PROVIDE 2/0 COPPER CABLE GROUND WIRE. ATTACH TO SITE GROUNDING SYSTEM.(SEE DWG E-800/801)
 - SEE C-100 FOR LOCATION



SECTION B
SCALE: 1/2" = 1'-0"

9/23/14

MCC BUILDING FOOTING/FOUNDATION PLAN
SCALE: 3/8" = 1'-0"
C.C. = CRACK CONTROL



- NOTES:**
- VERTICAL SURFACES BELOW GRADE FOUNDATION SHALL BE COATED WITH "COAL TAR EPOXY" 22189903, BLACK 2 PART EPOXY OR EQUAL.
 - INTERIOR AND EXTERIOR HORIZONTAL FOUNDATION SURFACES SHALL RECEIVE CONCRETE SEALANT, BLOCK LOCK OR MICRO SEAL, COATING THICKNESS AS SPECIFIED BY MANUFACTURER.
 - DRILL AND EPOXY, USE HILTI HIT RESO0 EPOXY OR EQUAL
 - SEE GENERAL NOTES FOR PAINT O ALL STRUCTURES AND EQUIPMENT.
 - CONDUIT LENGTHS HORIZONTAL LENGTH ONLY STUB UP 1'-0" MIN.
 - REFER TO S-200 FOR DOOR SCHEDULE AND CEILING PLAN.

ISSUED FOR CONSTRUCTION

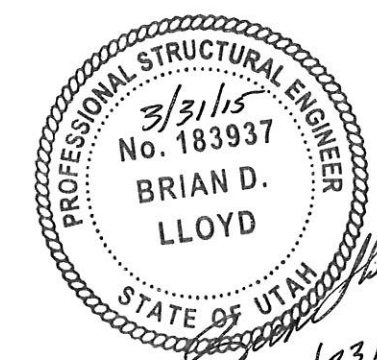
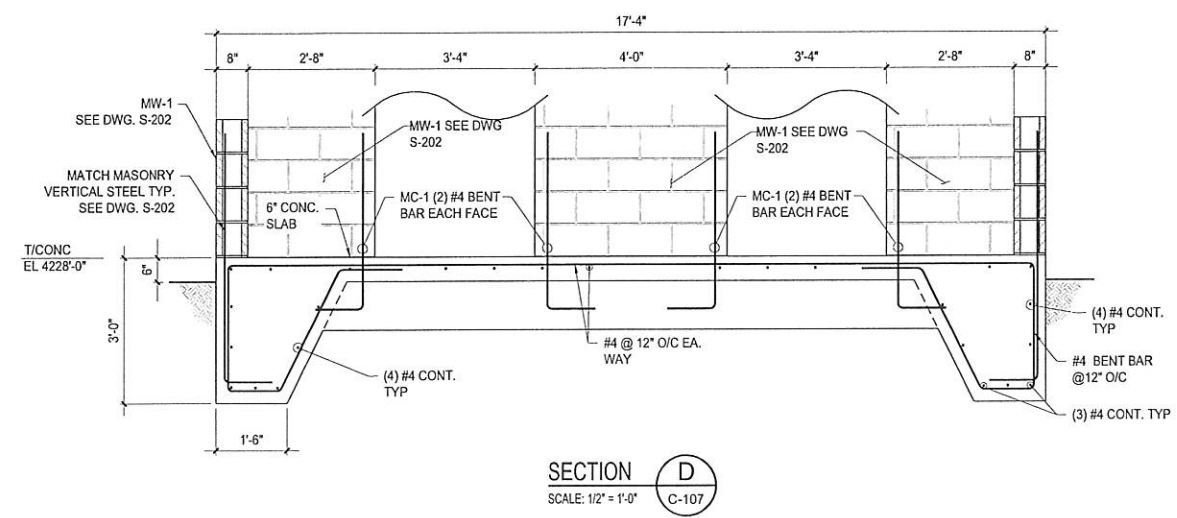
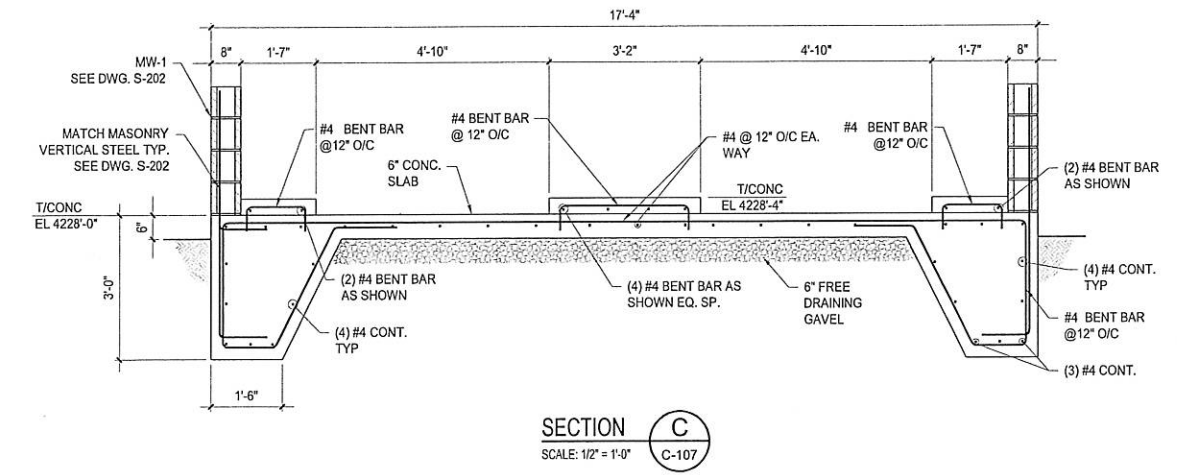
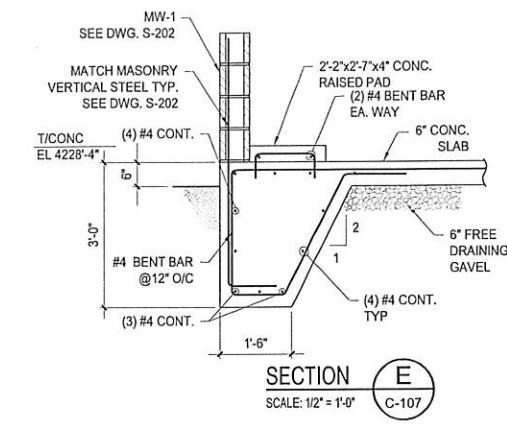
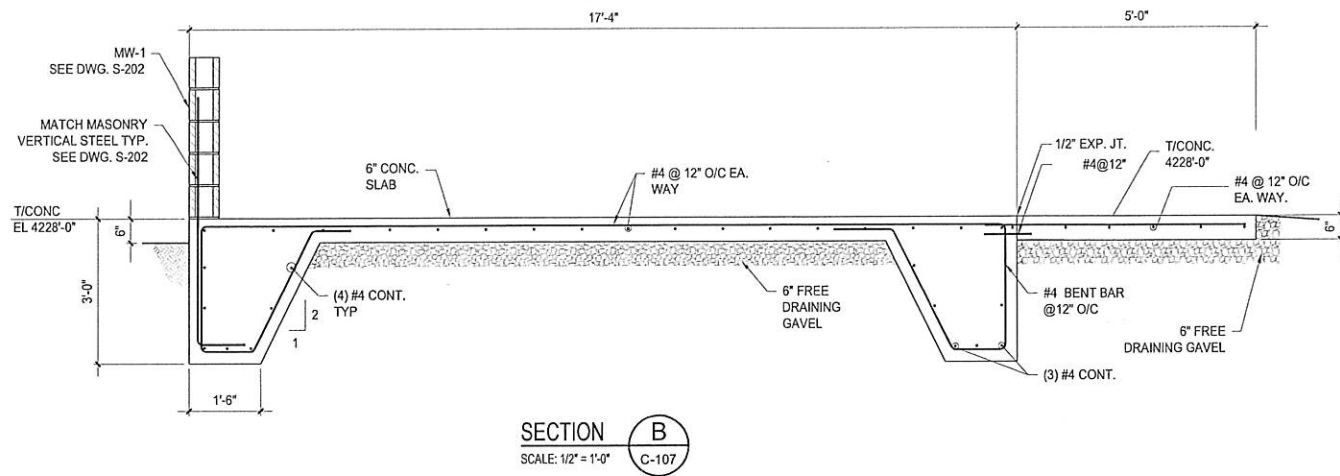
RISUN TECHNOLOGIES
357 WEST 6160 SOUTH
SALT LAKE CITY, UTAH 84107 Ph (801)281-2929

NEXT HIGHER ASSEMBLY	TOLERANCE UNLESS OTHERWISE INDICATED	DRAWN BY	DATE
	FRACTIONS: ± 1/16	J. PARKER	2/25/14
	.X = ± .1	CHECKED BY	DATE
	.XX = ± .05	B. LLOYD	9/11/14
	.XXX = ± .010	GSL ENG/SUPV	DATE
	.XXXX = ± .0005	G. HYDE	9/19/14
	ANGLES: ± .5°	PROJECT ENGINEER	DATE
		P. HEUN	9/15/14

Compass Minerals		765 NORTH 10500 WEST, OGDEN UT 84404 PH (801) 731-3100 FX (801) 731-4531	
TITLE THICKENER TH001 UPGRADE MCC BUILDING FOUNDATIONS PLAN			
SIZE	DWG NO	REV	
D	140209-C-107	0	
SCALE AS NOTED		CAR#	SHEET 1 OF 1

THIS DRAWING IS THE PROPERTY OF COMPASS MINERALS INTERNATIONAL, INC. MAY NOT BE COPIED OR DISTRIBUTED WITHOUT WRITTEN PERMISSION FROM COMPASS MINERALS.

REVISION HISTORY				
REV	ZONE	DESCRIPTION	DATE	APPROVED
0		ISSUED FOR CONSTRUCTION	9/23/2014	



- NOTES:
- TRUSS CONNECTION PLATES TO BE 304 STAINLESS STEEL.
 - EXTERIOR COATING SHALL BE:
PRIMER: DEVOE BAR-RUST 235
FINISH COAT: DEVTHANE 379, GSL GREEN
 - VERTICAL SURFACES BELOW GRADE FOUNDATION SHALL BE COATED WITH "COAL TAR EPOXY" 221B9903, BLACK 2 PART EPOXY OR EQUAL.
 - INTERIOR AND EXTERIOR HORIZONTAL FOUNDATION SURFACES SHALL RECEIVE CONCRETE SEALANT, BLOCK LOK OR MICRO SEAL, COATING THICKNESS AS SPECIFIED BY MANUFACTURER.
 - DRILL AND EPOXY, USE HILTI HIT RES500-SD EPOXY OR EQUAL
 - SEE STANDARD DETAIL FOR REINFORCING BAR BENDS U.N.O.
 - SEE STANDARD DETAIL FOR DEVELOPMENT LENGTH U.N.O.
 - WATER STOP TO BE SYNKO - FLEX PREFORMED PLASTIC ADHESIVE OR EQUAL.

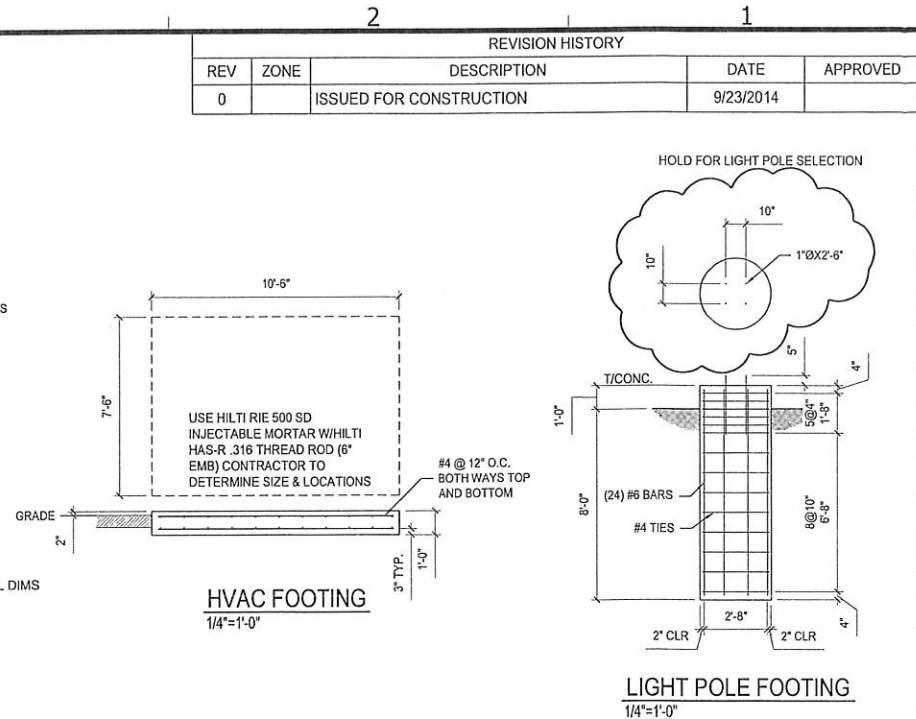
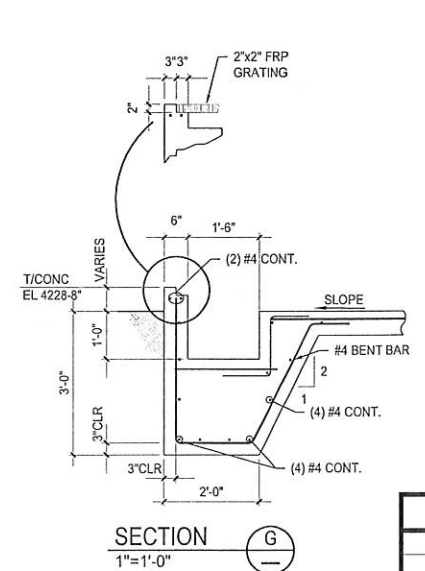
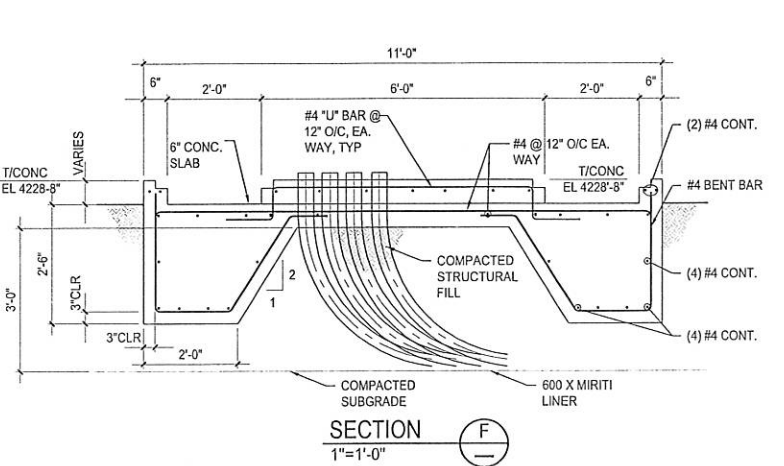
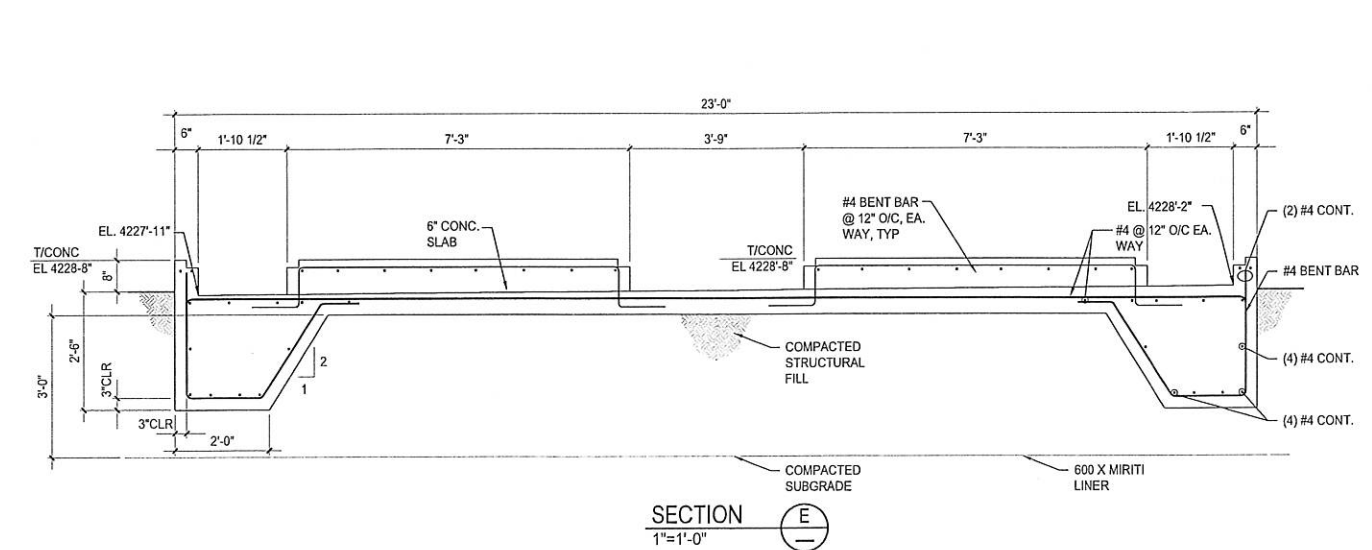
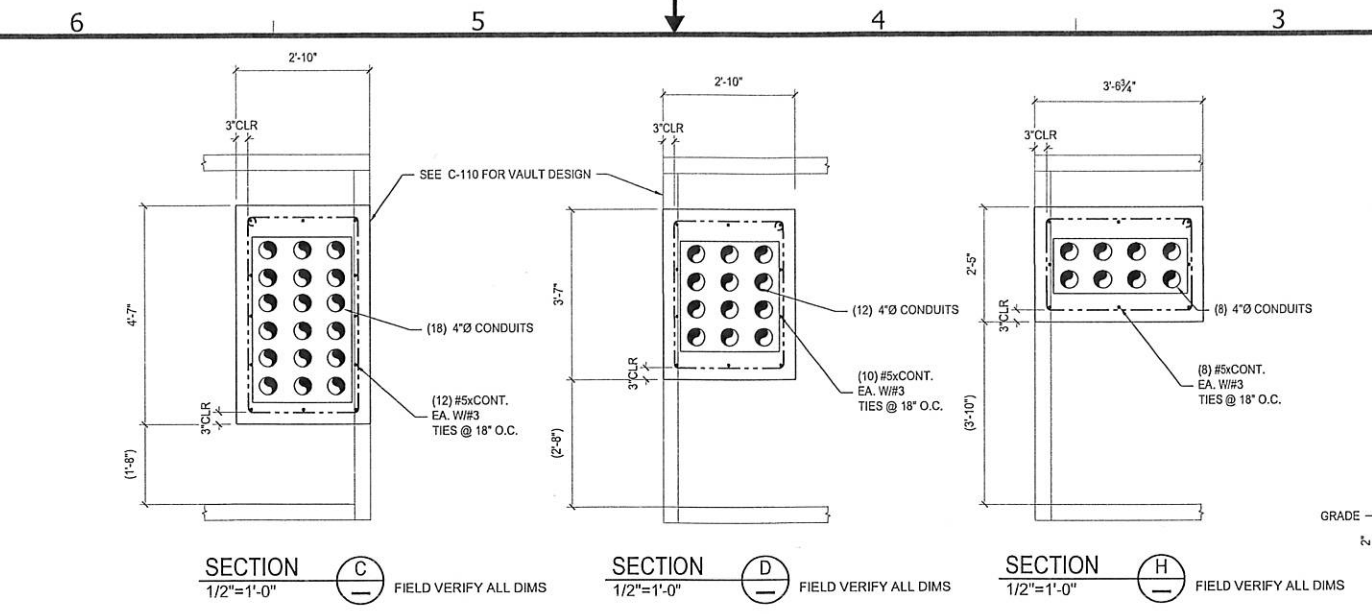
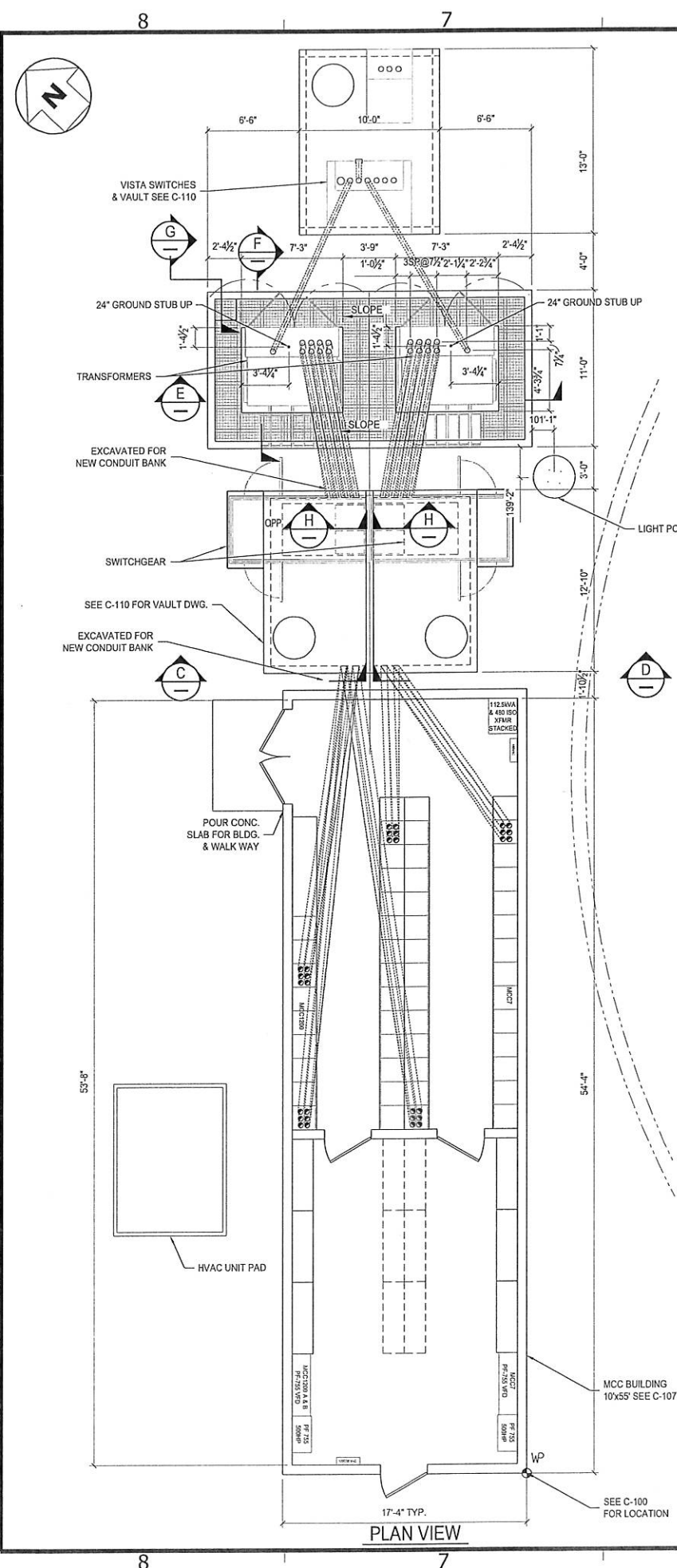
ISSUED FOR CONSTRUCTION

NEXT HIGHER ASSEMBLY	TOLERANCE UNLESS OTHERWISE INDICATED	DRAWN BY J.PARKER	DATE 2/25/14
	FRACTIONS: ± 1/16	CHECKED BY B.LLOYD	DATE 9/19/14
	.X = ± .1	GSL ENG/SUPV G.HYDE	DATE
	.XX = ± .05	PROJECT ENGINEER B.LLOYD	
	.XXX = ± .010		
	.XXXX = ± .0005		
	ANGLES: ± .5°		

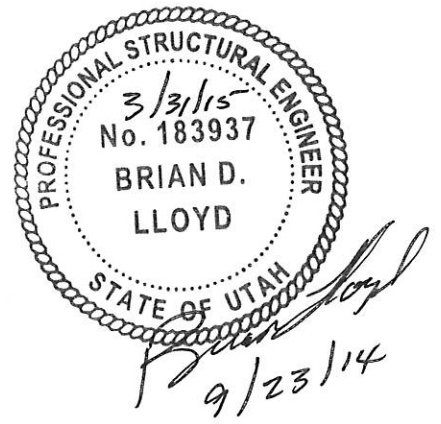
TRISUN TECHNOLOGIES
357 WEST 6160 SOUTH
SALT LAKE CITY, UTAH 84107 Ph (801)281-2929

Compass Minerals		765 NORTH 10500 WEST, OGDEN UT 84404 PH (801) 731-3100 FX (801) 731-4881
TITLE THICKENER TH001 UPGRADE MCC BUILDING FOUNDATIONS SECTIONS & DETAILS		
SIZE	DWG NO	REV
D	140209-C-108	0
SCALE AS NOTED	CAR#	SHEET 1 OF 1

THIS DRAWING IS THE PROPERTY OF COMPASS MINERALS INTERNATIONAL, INC. MAY NOT BE COPIED OR DISTRIBUTED WITHOUT WRITTEN PERMISSION FROM COMPASS MINERALS.



REVISION HISTORY				
REV	ZONE	DESCRIPTION	DATE	APPROVED
0		ISSUED FOR CONSTRUCTION	9/23/2014	



ISSUED FOR CONSTRUCTION

NEXT HIGHER ASSEMBLY	TOLERANCE UNLESS OTHERWISE INDICATED	DRAWN BY	DATE
	FRACTIONS: ± 1/16 .X = ± .1 .XX = ± .05 .XXX = ± .010 .XXXX = ± .0005	J. PARKER	6/30/14
	ANGLES: ± .5	CHECKED BY	DATE
		B. LLOYD	9/11/14
		GSL ENG/SUPV	DATE
		G. HYDE	9/19/14
		PROJECT ENGINEER	DATE
		P. HEUN	9/15/14

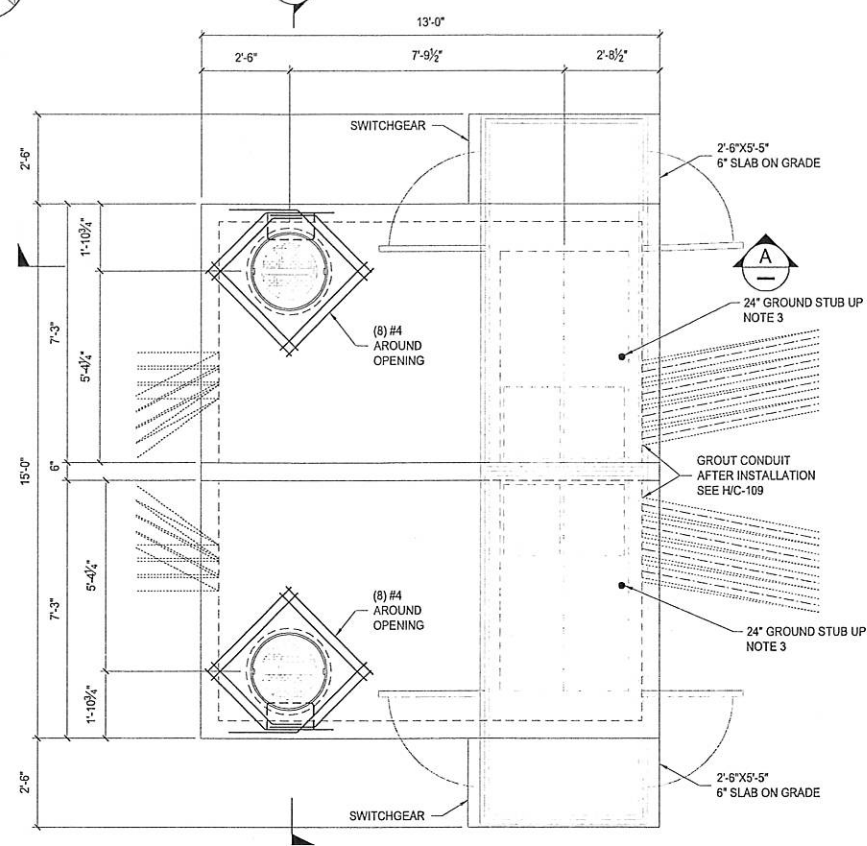
RISUN TECHNOLOGIES
357 WEST 6160 SOUTH
SALT LAKE CITY, UTAH 84107 Ph (801)281-2929

Compass Minerals 763 NORTH 10500 WEST, OGDEN UT 84404 PH (501)731-3100 FX (501)731-4331	
TITLE THICKENER TH001 UPGRADE TRANSFORMER & SWITCHGEAR CONC. PLAN & SECTIONS	
SIZE DWG NO D 140209-C-109	REV 0
SCALE AS NOTED CAR#	SHEET 1 OF 1

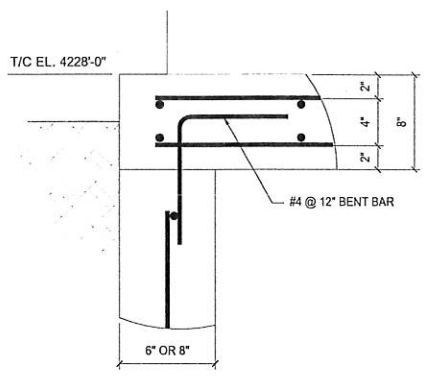
THIS DRAWING IS THE PROPERTY OF GREAT SALT LAKE MINERALS, A DIVISION OF COMPASS MINERALS INTERNATIONAL, INC. MAY NOT BE COPIED OR DISTRIBUTED WITHOUT WRITTEN PERMISSION FROM COMPASS MINERALS.

REVISION HISTORY				
REV	ZONE	DESCRIPTION	DATE	APPROVED
0		ISSUED FOR CONSTRUCTION	9/23/2014	

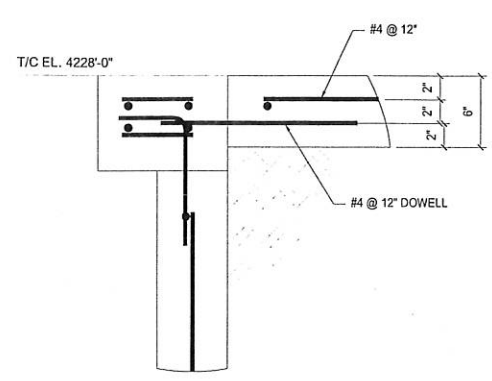
NOTES:
 1. SEE C-109 FOR SITE LOCATIONS FOR VAULTS.
 2. FIELD ANCHOR W/ HILTI HIT-RE500-SD PLUS HAS RODS
 3. PROVIDE 2/0 COPPER CABLE GROUND WIRE. ATTACH TO SITE GROUNDING SYSTEM.(SEE DWG E-800/801)



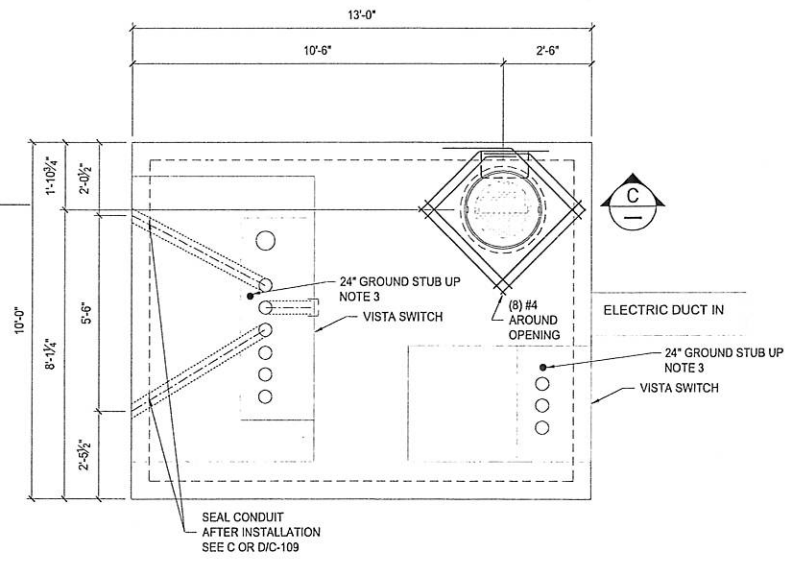
PLAN VIEW OF SWITCHGEAR VAULT
3/8"=1'-0"



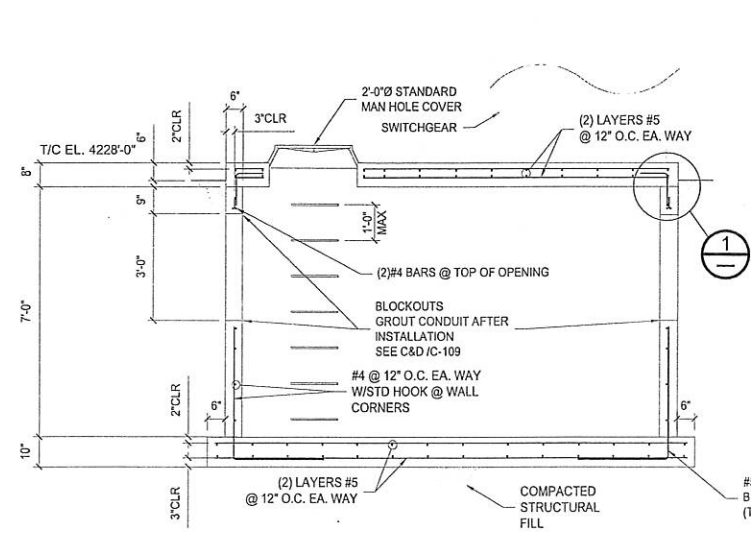
DETAIL 1
1 1/2"=1'-0"



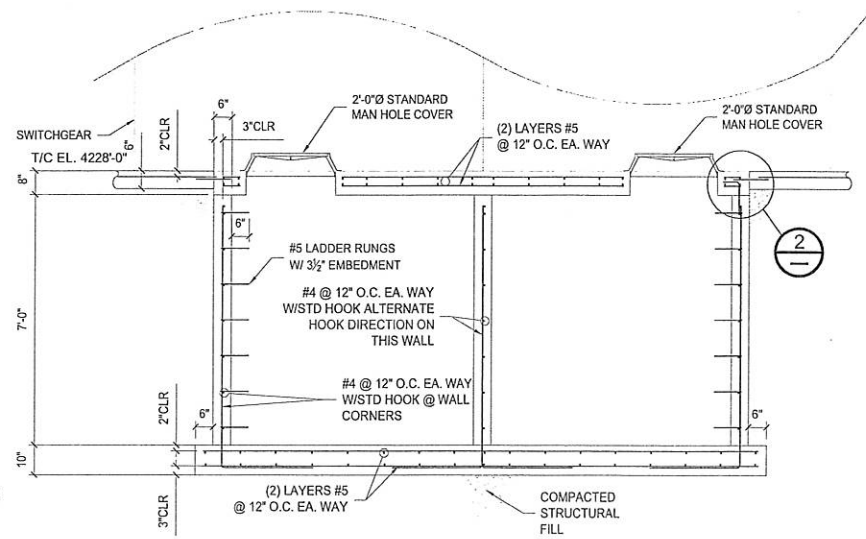
DETAIL 2
1 1/2"=1'-0"



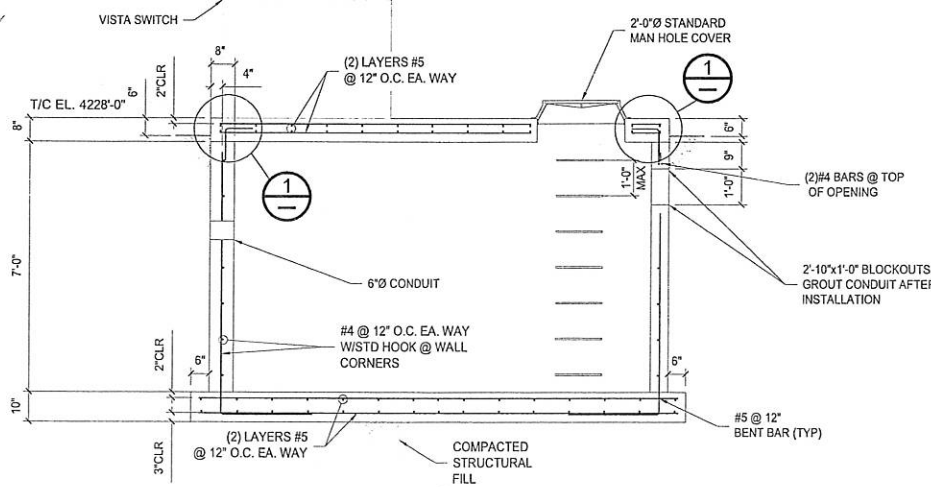
PLAN VIEW OF VISTA SWITCH VAULT
3/8"=1'-0"



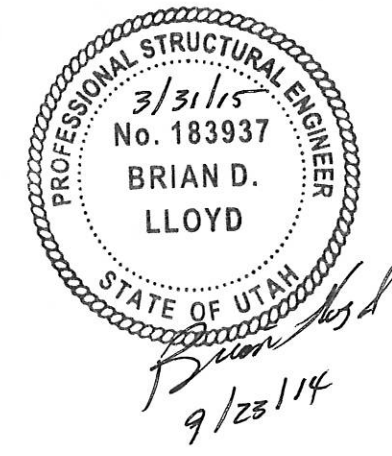
SECTION A
3/8"=1'-0"



SECTION B
3/8"=1'-0"



SECTION C
3/8"=1'-0"



ISSUED FOR CONSTRUCTION

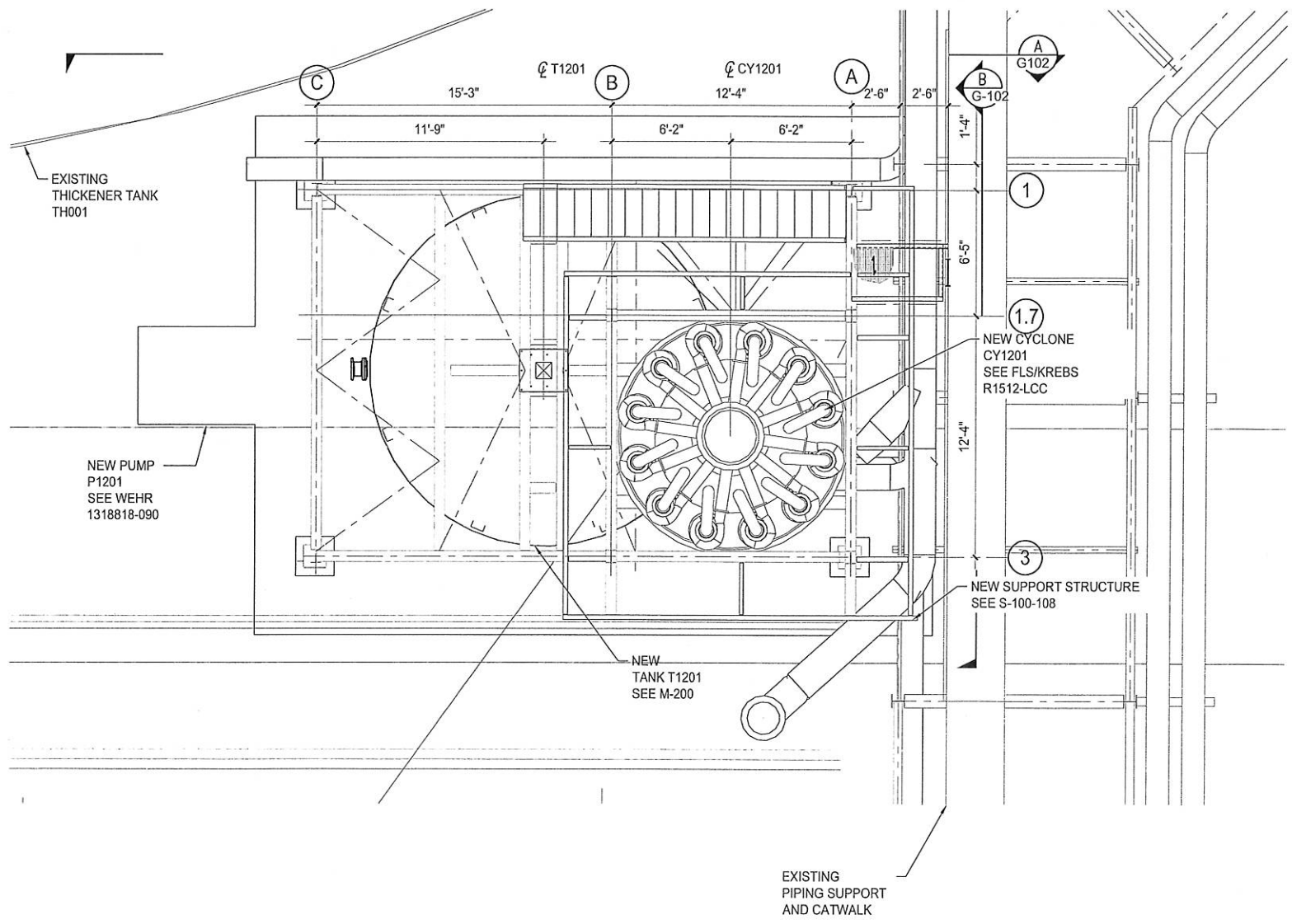
NEXT HIGHER ASSEMBLY	TOLERANCE UNLESS OTHERWISE INDICATED FRACTIONS: ± 1/16 .X = ± .1 .XX = ± .05 .XXX = ± .010 .XXXX = ± .0005	DRAWN BY J.PARKER CHECKED BY B.LLOYD GSL ENG/SUPV G.HYDE PROJECT ENGINEER P.HEUN	DATE 8/28/14 DATE 9/11/14 DATE 9/19/14 DATE 9/11/14
----------------------	---	---	--

THIS DRAWING IS THE PROPERTY OF COMPASS MINERALS INTERNATIONAL, INC. MAY NOT BE COPIED OR DISTRIBUTED WITHOUT WRITTEN PERMISSION FROM COMPASS MINERALS.

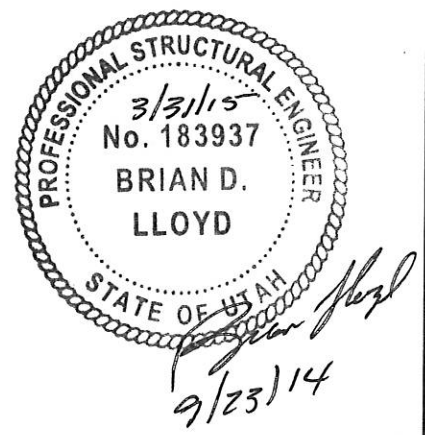
COMPASS MINERALS	765 NORTH 10500 WEST, OGDEN UT 84404 PH (801) 731-3100 FX (801) 731-4531
TITLE	THICKENER TH001 UPGRADE SWITCHGEAR & VISTA SWITCH VAULT PLAN & SECTIONS
SIZE	DWG NO D 140209-C-110
SCALE	AS NOTED CAR#
SHEET	1 OF 1



REVISION HISTORY				
REV	ZONE	DESCRIPTION	DATE	APPROVED
0		ISSUED FOR CONSTRUCTION	9/23/2014	



CY1201 STRUCTURE PLAN VIEW
1/4"=1'-0"



ISSUED FOR CONSTRUCTION

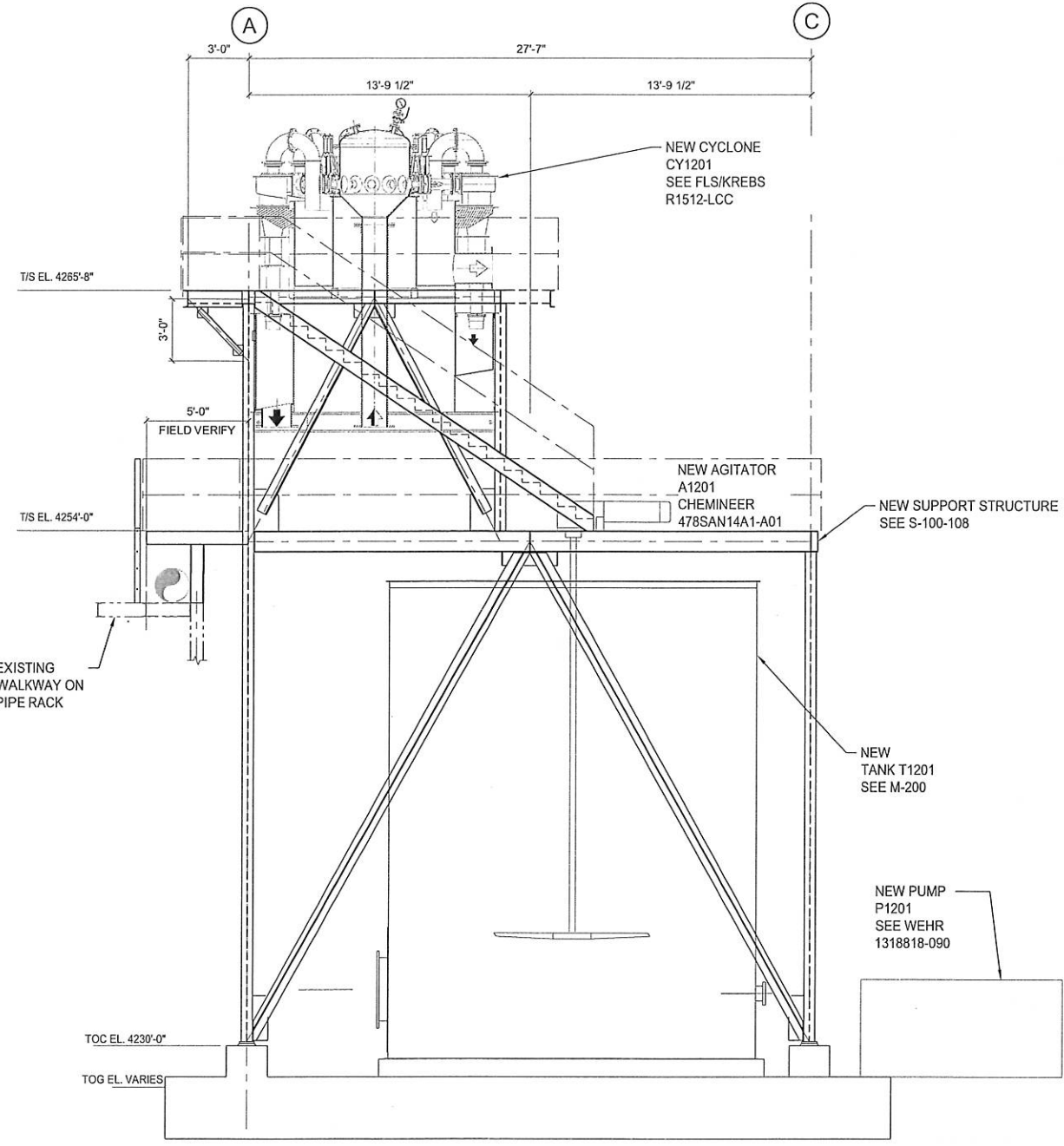


THIS DRAWING IS THE PROPERTY OF
COMPASS MINERALS INTERNATIONAL, INC.
MAY NOT BE COPIED OR DISTRIBUTED WITHOUT
WRITTEN PERMISSION FROM COMPASS MINERALS.

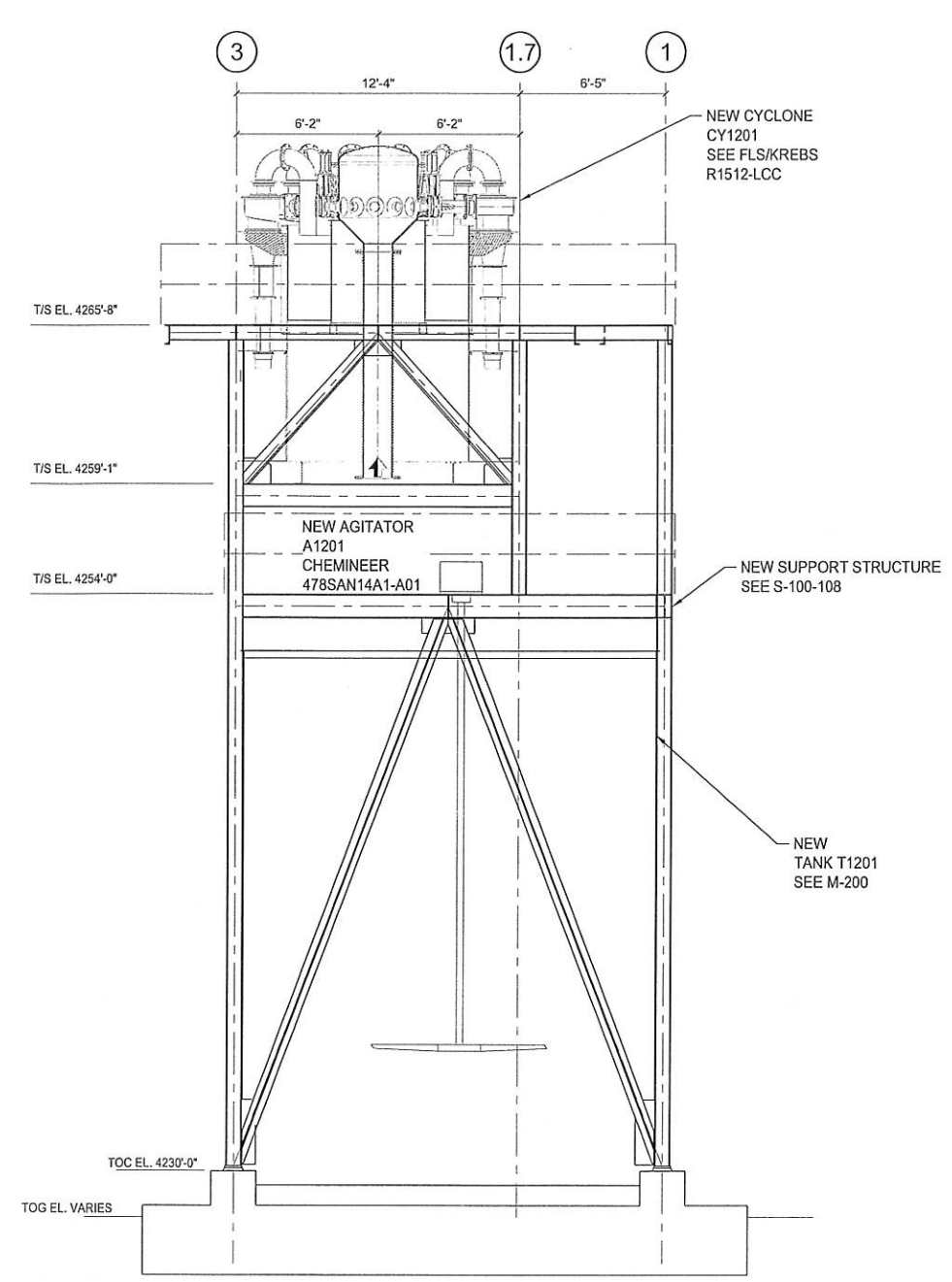
NEXT HIGHER ASSEMBLY	TOLERANCE UNLESS OTHERWISE INDICATED	DRAWN BY	DATE
	FRACTIONS: ± 1/16	J. PARKER	8/25/14
	.X = ± .1	CHECKED BY	DATE
	.XX = ± .05	B. LLOYD	9/11/14
	.XXX = ± .010	GSL ENG/SUPV	DATE
	.XXXX = ± .0005	G. HYDE	9/19/14
	ANGLES: ± .5°	PROJECT ENGINEER	DATE
		P. HEUN	9/11/14

Compass Minerals		765 NORTH 10500 WEST, OGDEN UT 84404 PH (801) 731-3100 FX (801) 731-6531	
TITLE THICKENER TH001 UPGRADE CY1201 ARRANGEMENT SITE			
SIZE	DWG NO	REV	
D	140209-G-101	0	
SCALE AS NOTED CAR#		SHEET 1 OF 1	

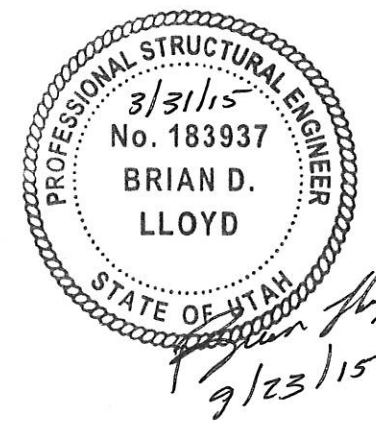
REVISION HISTORY				
REV	ZONE	DESCRIPTION	DATE	APPROVED
0		ISSUED FOR CONSTRUCTION	9/23/2014	



SECTION A
1/4"=1'-0"



SECTION B
1/4"=1'-0"



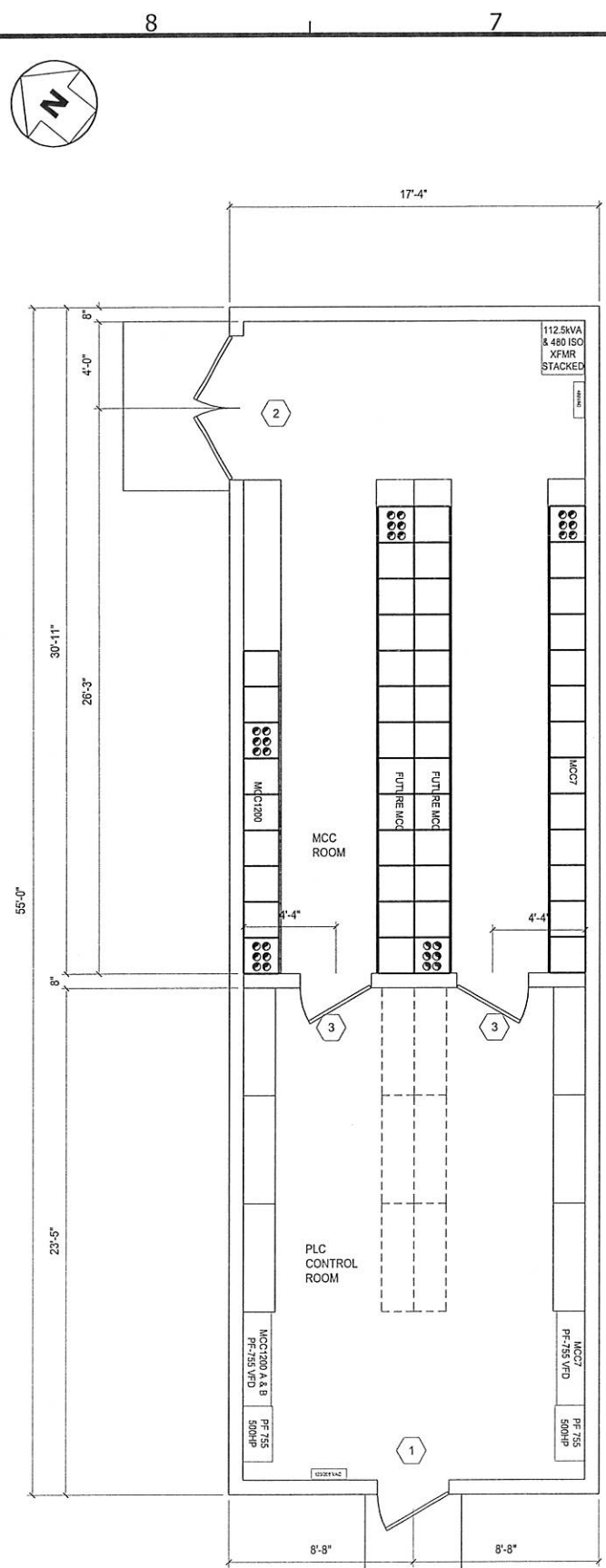
ISSUED FOR CONSTRUCTION

RISUN TECHNOLOGIES
357 WEST 6160 SOUTH
SALT LAKE CITY, UTAH 84107 Ph (801)281-2929

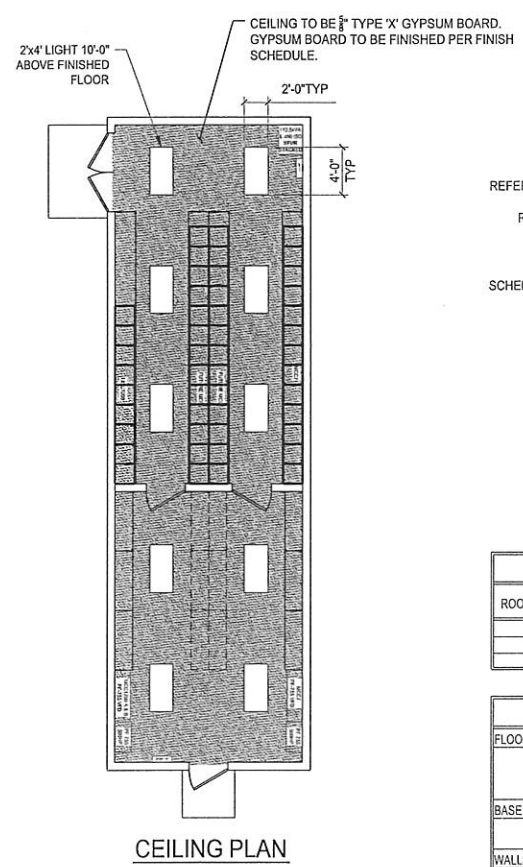
NEXT HIGHER ASSEMBLY	TOLERANCE UNLESS OTHERWISE INDICATED	DRAWN BY	DATE
	FRACTIONS: ± 1/16	J. PARKER	8/25/14
	.X = ± .1	CHECKED BY	DATE
	.XX = ± .05	B. LLOYD	9/11/14
	.XXX = ± .010	GSL ENG/SUPV	DATE
	.XXXX = ± .0005	G. HYDE	9/19/14
	ANGLES: ± .5°	PROJECT ENGINEER	DATE
		P. HEUN	8/18/14

Compass Minerals 765 NORTH 10300 WEST, OGDEN UT 84404 PH (801) 731-3100 FX (801) 731-4881	
TITLE THICKENER TH001 UPGRADE CY1201 ARRANGEMENT ELEVATIONS	
SIZE DWG NO D 140209-G-102	REV 0
SCALE AS NOTED CAR#	SHEET 1 OF 1

THIS DRAWING IS THE PROPERTY OF COMPASS MINERALS INTERNATIONAL, INC. MAY NOT BE COPIED OR DISTRIBUTED WITHOUT WRITTEN PERMISSION FROM COMPASS MINERALS.



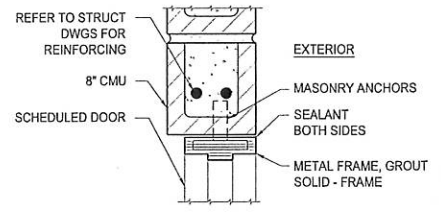
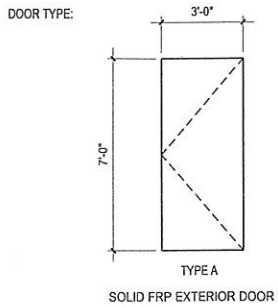
PLAN VIEW



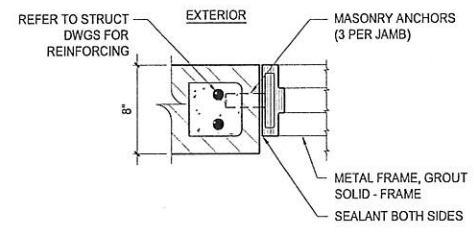
CEILING PLAN

DOOR SCHEDULE											
DOOR NO.	DOOR SIZE	DOOR TYPE	DOOR FINISH	FRAME TYPE	FRAME FINISH	DETAILS			HRDWR GROUP	FIRE RATING	NOTES
						HEAD	JAMB	SILL			
(1)	1 3/4" X 3'-0" X 7'-0"	A	FRP	HOLLOW METAL	PAINTED	1	2	3	1	-	REMOVABLE TRANSOM
(2)	(2) 1 3/4" X 3'-0" X 7'-0"	A	FRP	HOLLOW METAL	PAINTED	1	2	3	2	-	REMOVABLE TRANSOM NO CENTER POST
(3)	1 3/4" X 3'-0" X 7'-0"	A	FRP	HOLLOW METAL	PAINTED	1	2	3	1	-	

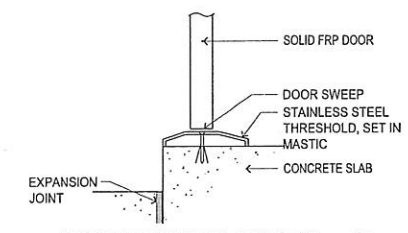
NOTES:
1. DOOR TO HAVE A 24" HIGH X DOOR WIDTH, REMOVABLE TRANSOM FOR EQUIPMENT LOADING.



HEAD DETAIL 1
SCALE: 1 1/2" = 1'-0"



JAMB DETAIL 2
SCALE: 1 1/2" = 1'-0"



DOOR THRESHOLD DETAIL 3
SCALE: 3" = 1'-0"

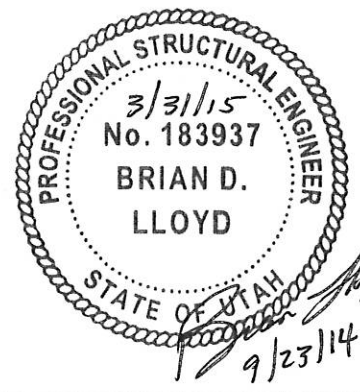
FINISH SCHEDULE									
ROOM NO.	ROOM NAME	FLOOR	BASE	WALLS				CEILING	REMARKS
				NORTH	SOUTH	EAST	WEST		
	MCC ROOM	F-1	B-1	W-1	W-1	W-1	W-1	C-2	
	PLC CONTROL ROOM	F-1	B-1	W-1	W-1	W-1	W-1	C-2	
	BLD EXTERIOR	-	-	W-1	W-1	W-1	W-1		

FINISH LEGEND			
FLOOR	MARK No.	DESCRIPTION	NOTES
	F-1	SEALED CONCRETE	-
	F-2	STAINED & SEALED CONCRETE	-
BASE	MARK No.	DESCRIPTION	NOTES
	B-1	NO BASE REQUIRED	-
WALLS	MARK No.	DESCRIPTION	NOTES
	W-1	CMU - PAINTED	1
	W-2	GYPSUM BOARD - PAINTED	-
	W-3	GYPSUM BOARD - TAPED & SEALED	-
	W-4	UNPAINTED, EXPOSED CONCRETE	-
	W-6	NO FINISH - OPEN TO STRUCTURE	-
CEILINGS	MARK No.	DESCRIPTION	NOTES
	C-1	GYPSUM BOARD - PAINTED	-
	C-2	GYPSUM BOARD - TAPED & SEALED	-
	C-3	Z-07X4-0" LAY-IN ACOUSTICAL TILE	-
	C-4	NO CEILING REQ'D - OPEN TO STRUCTURE	-

NOTE:
1. PRIMER: DEVOE BAR RUST 235.
FINISH COAT: DEVVRAN 224HS, COLOR AS SPECIFIED BY OWNER.

HARDWARE GROUPS				
GROUP ONE:				
* 1 1/2 PAIR	STAINLESS STEEL BUTT HINGES			
* 1 EA.	3/8" STAINLESS STEEL THRESHOLD - MRF'S STD. ADA APPROVED			
* 1 EA.	STAINLESS STEEL DOOR STOP			
* 1 SET	WEATHERSTRIP			
* 1 EA.	PANIC DEVICE			
* 1 EA.	STAINLESS STEEL CLOSER			
GROUP TWO:				
* 2 PAIR	STAINLESS STEEL BUTT HINGES			
* 1 EA.	7/2" STAINLESS STEEL THRESHOLD - MRF'S STD. ADA APPROVED			
* 2 EA.	STAINLESS STEEL DOOR STOP			
* 1 SET	WEATHERSTRIP			
* 2 EA.	STAINLESS STEEL CLOSER			
* 1 EA.	PANIC DEVICE			
* 1 SET	AUTO FLUSH BOLTS			
* 1 EA.	CYLINDER			

- EXIT ACCESS DOORWAYS SHALL BE OPERABLE FROM THE INSIDE WITHOUT THE USE OF A KEY, SPECIAL KNOWLEDGE OR EFFORT. BUILDING EXIT DOORS SHALL HAVE PANIC EXIT DEVICE HARDWARE MEETING THIS REQUIREMENT. MANUAL FLUSH BOLTS SHALL BE PROHIBITED ON DOUBLE DOORS.
- ALL THRESHOLDS AT THE DOORWAYS SHALL BE NO MORE THAN 1/2" HIGHER THAN THE FLOOR ON BOTH SIDES OF THE DOORS.
- MATERIAL:
EXTERIOR FRAME: FRP
- HARDWARE GROUPS: CORBIN RUSSWIN ML2000 SERIES.
- NON REMOVABLE PINS ARE REQUIRED ON DOORS WITH BUTTS THAT ARE EXTERIOR OUTWARD SWINGING
- NO KEYING REQ'D
- FINISH OF NEW CLOSERS TO MATCH LEVERS AND OTHER HARDWARE. CORBIN RUSSWIN DC2200
- PROVIDE MANEUVERING CLEARANCES AT DOORS TO MEET ICC/ANSI A117.1-1998 404.2.4.1 AS SHOWN.
- SUBMIT PAINT COLORS TO OWNER FOR APPROVAL.
- OTHER HARDWARE MANUF. APPROVED IF EQUAL AND OF HEAVIER DUTY, EXCEPT LEVER LOCKSETS: CORBIN RUSSWIN & SCHLAGE ONLY APPROVED EQUALS. AMWELD DOORS AND/OR FRAMES ARE NOT APPROVED.
- CAULK BOTH SIDES OF ALL DOOR FRAMES. SOLID GROUT EXTERIOR HOLLOW METAL FRAMES. HOLLOW METAL FRAMES ARE 3/4" FROM EXTERIOR FACE OF BRICK.



ISSUED FOR CONSTRUCTION

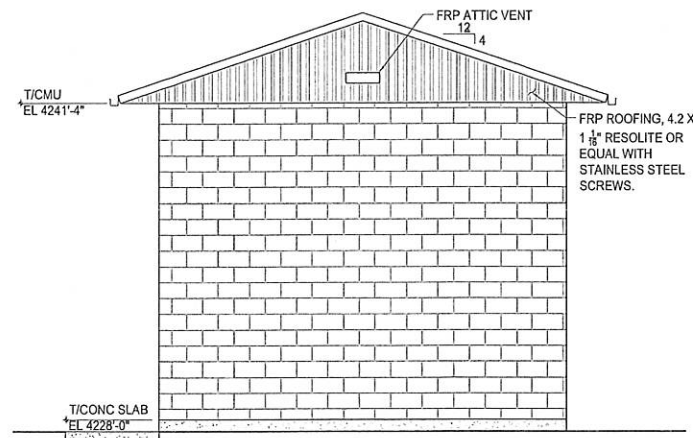
NEXT HIGHER ASSEMBLY	TOLERANCE UNLESS OTHERWISE INDICATED	DRAWN BY	DATE
	FRACTIONS: ± 1/16	J. PARKER	2/25/14
	.X = ± .1	CHECKED BY	DATE
	.XX = ± .05	B. LLOYD	9/11/14
	.XXX = ± .010	GSL ENG/SUPV	DATE
	.XXXX = ± .0005	G. HYDE	9/19/14
	ANGLES: ± .5	PROJECT ENGINEER	DATE
		P. HEUN	9/15/14



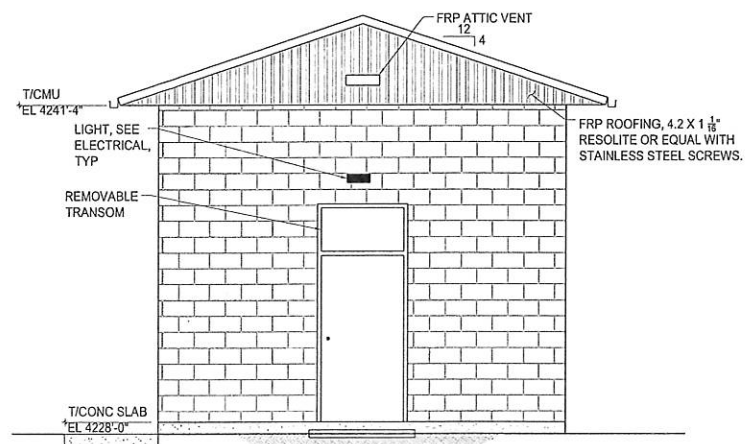
Compass Minerals 765 NORTH 10500 WEST, OGDEN UT 84404 PH (801) 731-3100 FX (801) 731-4551	
TITLE THICKENER TH001 UPGRADE MCC BUILDING DOOR, FINISH, CEILING PLAN & SCHEDULES	
SIZE D 140209-S-200	REV 0
SCALE AS NOTED	SHEET 1 OF 1

THIS DRAWING IS THE PROPERTY OF COMPASS MINERALS INTERNATIONAL, INC. MAY NOT BE COPIED OR DISTRIBUTED WITHOUT WRITTEN PERMISSION FROM COMPASS MINERALS.

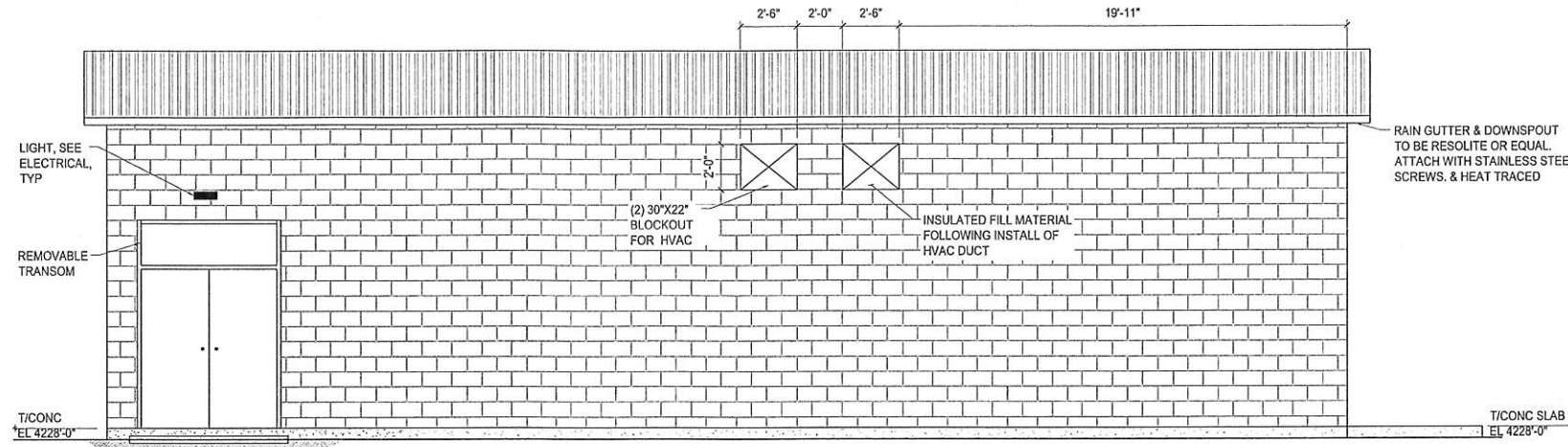
REVISION HISTORY				
REV	ZONE	DESCRIPTION	DATE	APPROVED
0		ISSUED FOR CONSTRUCTION	9/23/2014	



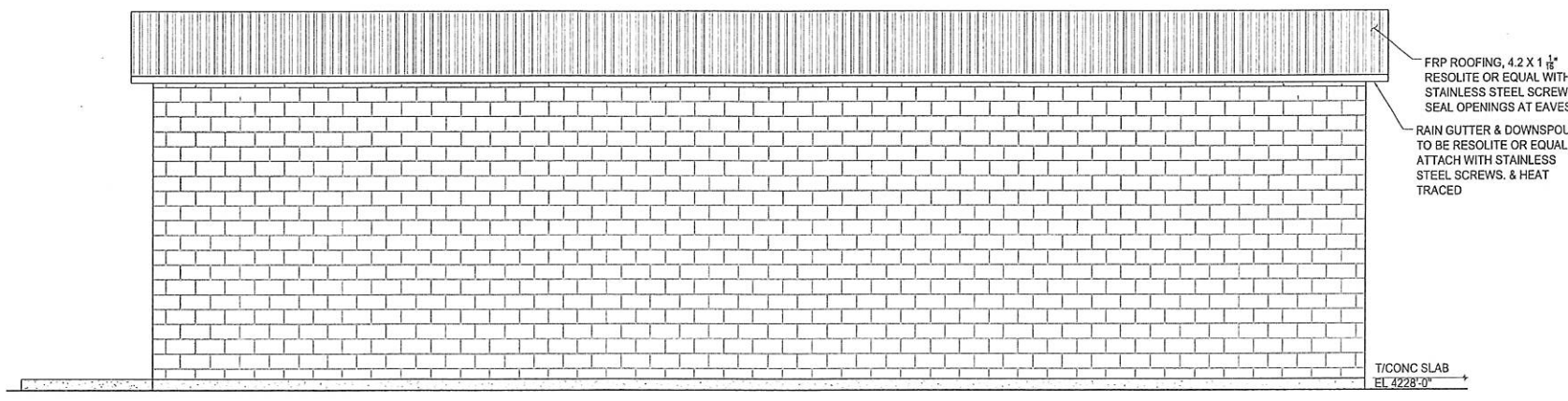
NORTH SIDE ELEVATION
SCALE: 3/8" = 1'-0"



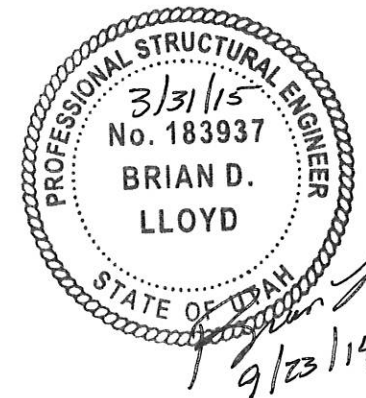
SOUTH SIDE ELEVATION
SCALE: 3/8" = 1'-0"



WEST ELEVATION
SCALE: 3/8" = 1'-0"

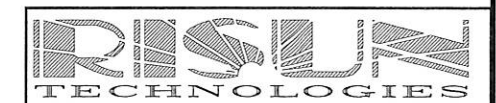


EAST ELEVATION
SCALE: 3/8" = 1'-0"



ISSUED FOR CONSTRUCTION

NEXT HIGHER ASSEMBLY	TOLERANCE UNLESS OTHERWISE INDICATED	DRAWN BY	DATE
	FRACTIONS: ± 1/16	J. PARKER	2/25/14
	.X = ± .1	CHECKED BY	DATE
	.XX = ± .05	B. LLOYD	9/11/14
	.XXX = ± .010	GSL ENG/SUPV	DATE
	.XXXX = ± .0005	G. HYDE	9/19/14
	ANGLES: ± .5°	PROJECT ENGINEER	DATE
		P. HEUN	9/17/14



Compass Minerals 763 NORTH 10500 WEST, OGDEN UT 84404
PH (801) 731-3100 FX (801) 731-4881

TITLE
**THICKENER TH001 UPGRADE
MCC BUILDING
ELEVATIONS**

SIZE	DWG NO	REV
D	140209-S-201	0
SCALE	AS NOTED	CAR#

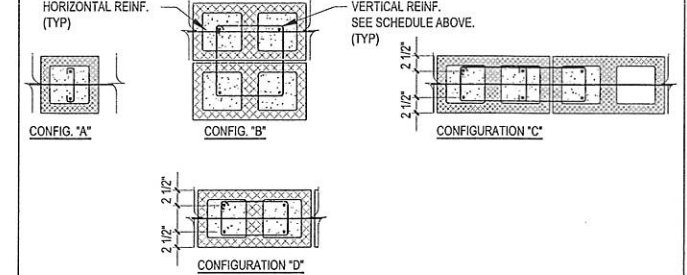
THIS DRAWING IS THE PROPERTY OF COMPASS MINERALS INTERNATIONAL, INC. MAY NOT BE COPIED OR DISTRIBUTED WITHOUT WRITTEN PERMISSION FROM COMPASS MINERALS.

REVISION HISTORY				
REV	ZONE	DESCRIPTION	DATE	APPROVED
0		ISSUED FOR CONSTRUCTION	9/23/2014	

MASONRY LINTEL SCHEDULE				
MK#	DEPTH	MAX SPAN	REINFORCING	
			HORIZONTAL	STIRRUPS
ML-1	16"	3'-6"	(1) #4 CONT., TOP & BOTTOM	#4 @ 16" O/C
ML-2	24"	6'-6"	(2) #4 CONT., TOP & BOTTOM	(2) #4 @ 16" O/C
ML-3	16"	2'-0"	(1) #4 CONT., BOTTOM	NONE

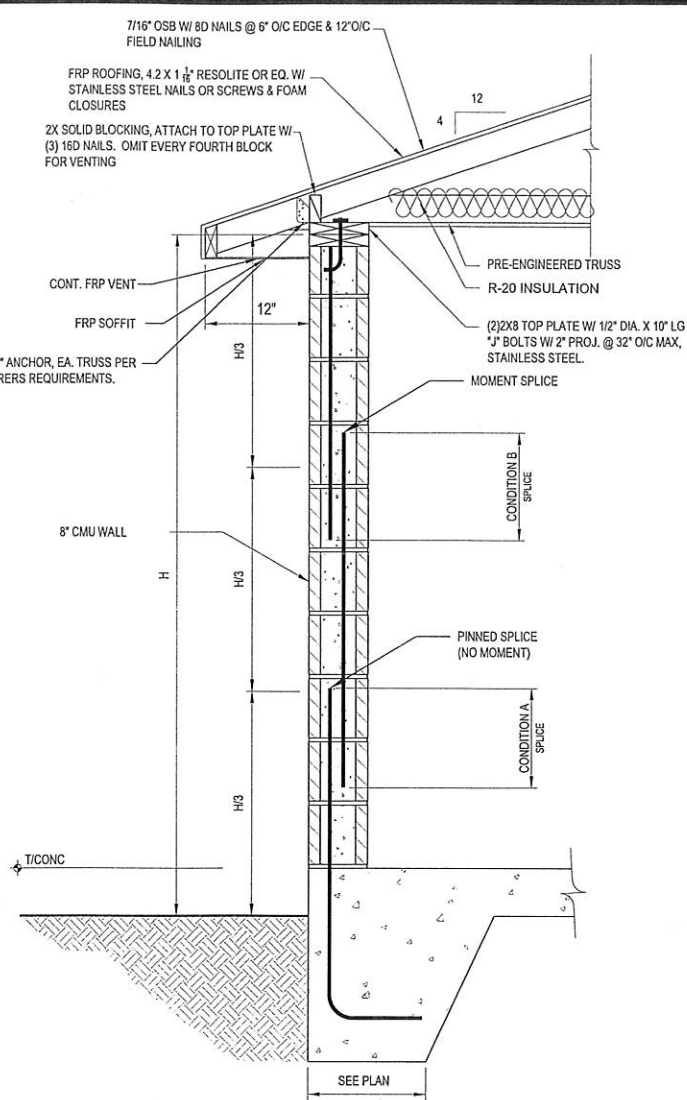
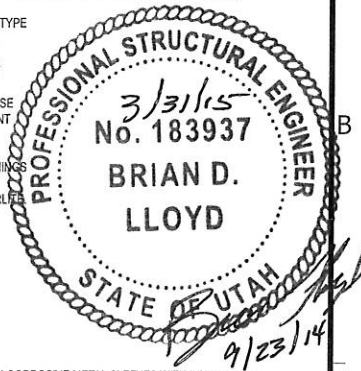
MASONRY SCHEDULE							
MK#	THK	MTL	SOLID GROUT	VERTICAL REINF.	HORIZONTAL REINF.	SPECIAL INSPECTION	NOTES
MW-1	8"	CMU	NO	#5 @ 32" O/C, CENTERED	(2) #4 @ 48" O/C	YES	NOTE 7 & 8

MASONRY COLUMN SCHEDULE				
MK#	COL. SIZE	REINFORCING		NOTES
		VERTICAL	CONFIGURATION	
MC-1	8" X 8"	(2) #4 EA. FACE	#3 @ 16" O/C	A



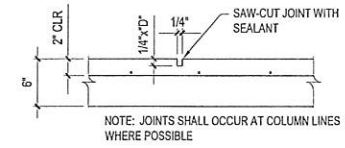
- NOTES:
- LOCATE THE CENTERLINE OF VERTICAL BARS 2" FROM THE FACE OF THE MASONRY. LOCATE HORIZONTAL WALL REINFORCEMENT INSIDE OF VERTICAL BARS.
 - EXTEND VERTICAL REINFORCING AND TIES FULL HEIGHT OF WALL, U.N.O.
 - EXTEND VERTICAL MASONRY COLUMN REINFORCING INTO THE FOOTING AND TERMINATE WITH A STANDARD 90° DOWEL VERTICAL COLUMN REINFORCING 4'-0" INTO CONCRETE FOUNDATION WALLS TALLER THAN 5'-0".
 - IN CONCRETE FOUNDATION WALLS, VERTICAL MASONRY COLUMN REINFORCING SHALL BE TIED WITH #3 TIES AT THE SAME SPACING AND CONFIGURATION AS MASONRY COLUMNS ABOVE.
 - SEE GENERAL STRUCTURAL NOTES FOR ALL OTHER REQUIREMENTS.
 - PROVIDE (2) #4 TIES IN TOP 5" OF COLUMN.
 - HORIZONTAL REINFORCEMENT SHALL BE ANCHORED AROUND VERTICAL REINFORCING WITH A STANDARD 90° HOOK.
 - SEE MASONRY LAP SPLICE & DEVELOPMENT LENGTH STANDARD DETAIL.

- NOTES:
- COORDINATE WITH ARCHITECTURAL DRAWINGS, MASONRY WALL FINISHES, TYPE OF MATERIAL COURSING ETC.
 - CENTER VERTICAL REINFORCEMENT IN WALLS UNLESS NOTED OTHERWISE.
 - PLACE HORIZONTAL WALL REINFORCEMENT BETWEEN VERTICAL MASONRY COLUMN REINFORCING BARS.
 - CONTINUE HORIZONTAL WALL REINFORCEMENT THRU MASONRY TIEINS, USE LARGER REINFORCEMENT WHERE HORIZONTAL BARS & LINTEL REINFORCEMENT OCCURS IN THE SAME COURSE.
 - SEE GENERAL STRUCTURAL NOTES FOR ADDITIONAL REQUIREMENTS.
 - HOOK ALL HORIZONTAL BARS AROUND VERTICAL REINFORCEMENT AT OPENINGS & CORNERS.
 - CMU BLOCK TO BE INSULATED. FILL EACH OPEN VERTICAL CELL W/ BULK PERITE.

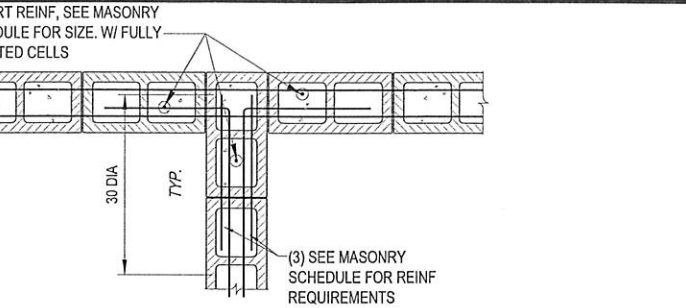


LAP SPLICE & DEVELOPMENT LENGTH SCH.		
SIZE	CONDITION A	CONDITION B
#3	18"	27"
#4	24"	36"
#5	30"	45"
#6	36"	54"
#7	42"	63"
#8	48"	72"

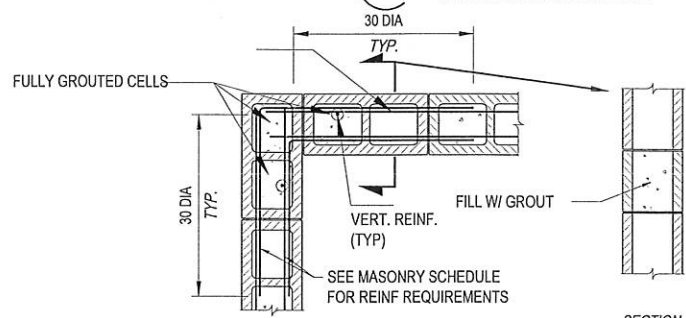
STANDARD MASONRY LAP SPLICE (6)



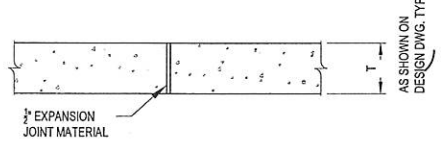
CRACK CONTROL JOINT (CC) (2)



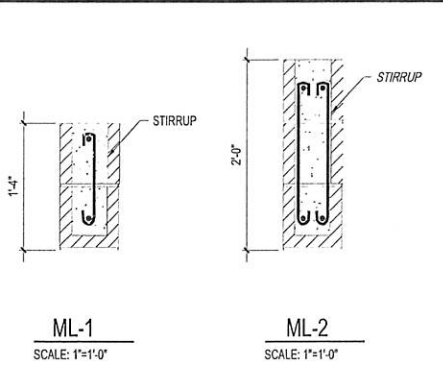
8" CMU BOND BEAM AT INTERSECTION (8)



8" CMU BOND BEAM AT CORNER (3)

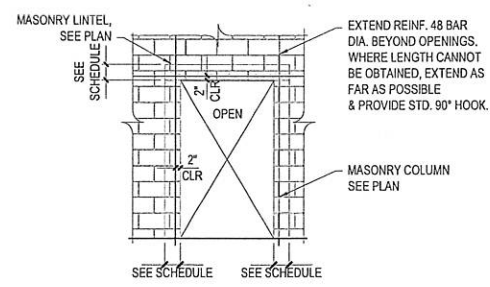


TYPICAL SLAB CONSTRUCTION DETAILS (4)



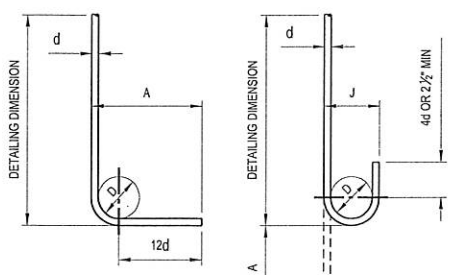
MASONRY LINTELS

NOTE: BOND BEAM REINFORCING NOT SHOWN FOR CLARITY



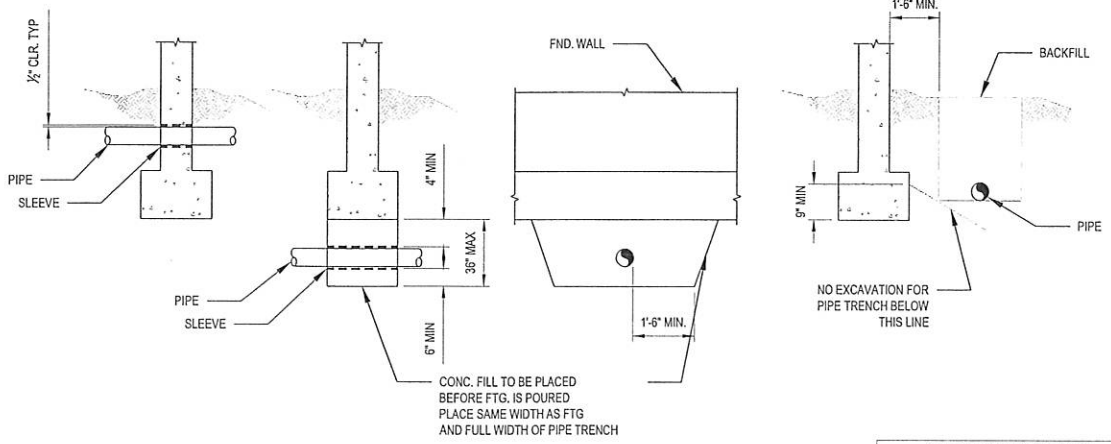
DOOR CMU FRAMING SECTION (1)

- NOTES:
- TYPICAL HORIZONTAL AND VERTICAL WALL REINFORCING NOT SHOWN FOR CLARITY.
 - USE OPEN END LIMITS AT INTERSECTIONS OF LINTELS AND JAMBS.



MAIN STEEL				
BAR SIZE	D	90° HOOKS		180° HOOKS
		A	J	A
#3	2 1/2"	6"	3"	5"
#4	3"	8"	4"	6"
#5	3 1/2"	10"	5"	7"
#6	4 1/2"	1'-0"	6"	8"
#7	5 1/2"	1'-2"	7"	10"
#8	6"	1'-4"	8"	11"
#9	6 1/2"	1'-7"	11 1/2"	1'-3"
#10	10 1/2"	1'-10"	1'-10 1/2"	1'-5"
#11	12"	2'-0"	1'-2 1/2"	1'-7"

TIES/STIRRUP				
BAR SIZE	D	90° HOOKS		135° HOOKS
		A	A	H
#3	1 1/2"	4"	5"	3 1/2"
#4	2"	4 1/2"	6 1/2"	4 1/2"
#5	2 1/2"	6"	8"	5 1/2"
#6	4 1/2"	1'-0"	11"	6 1/2"
#7	5 1/2"	1'-2"	1'-0 1/2"	7 1/2"
#8	6"	1'-4"	1'-2 1/2"	9"



STANDARD PIPE SLEEVE THRU FOOTING (7)

STANDARD HOOK DETAILS (5) (GRADE 60)

ISSUED FOR CONSTRUCTION

NEXT HIGHER ASSEMBLY	TOLERANCE UNLESS OTHERWISE INDICATED	DRAWN BY	DATE
	FRACTIONS: ± 1/16 X = ± 1 XX = ± .05 XXX = ± .010 XXXX = ± .0005	J. PARKER CHECKED BY B. LLOYD GSL ENG/SUPV G. HYDE PROJECT ENGINEER P. HEUN	2/25/14 9/11/14 9/19/14 9/17/14



Compass Minerals	765 NORTH 10500 WEST, OGDEN UT 84404 PH (801) 731-3100 FX (801) 731-4531
THICKENER TH001 UPGRADE MCC BUILDING SECTIONS & DETAILS	
SIZE DWG NO D 140209-S-202	REV 0
SCALE AS NOTED CAR#	SHEET 1 OF 1

THIS DRAWING IS THE PROPERTY OF COMPASS MINERALS INTERNATIONAL, INC. MAY NOT BE COPIED OR DISTRIBUTED WITHOUT WRITTEN PERMISSION FROM COMPASS MINERALS.