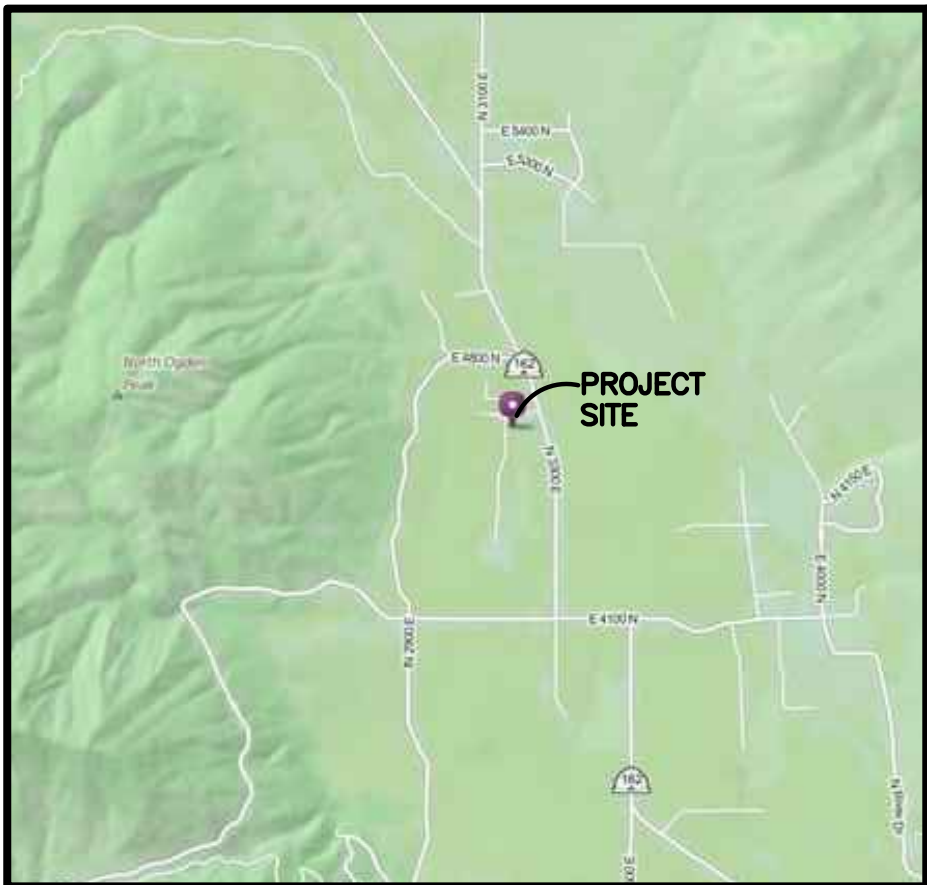
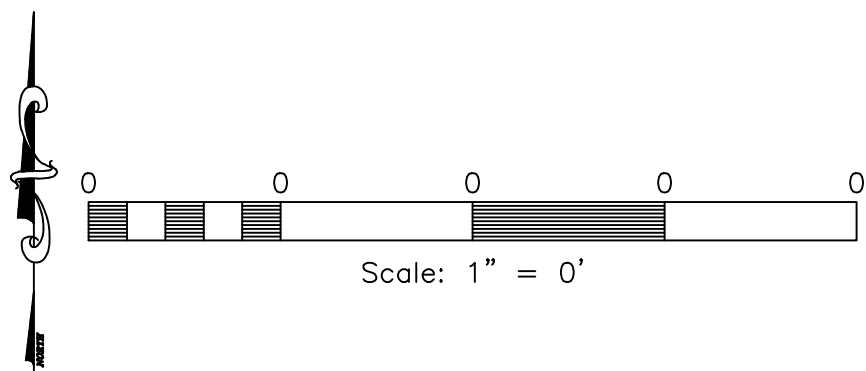
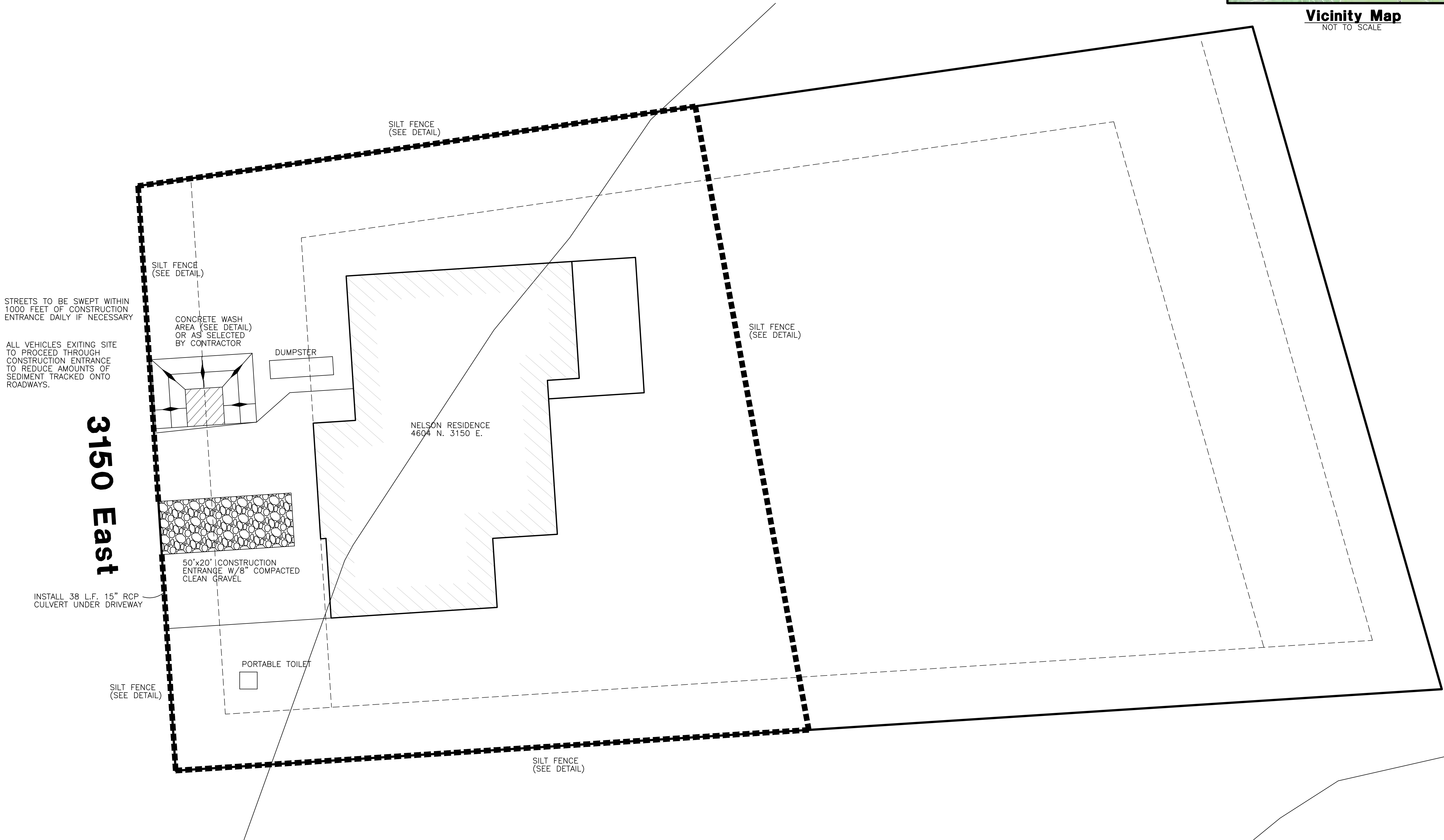


KEITH & LANETE NELSON
4604 North 3150 East, Liberty UT
Storm Water Pollution Prevention Plan Exhibit
LIBERTY CITY, WEBER COUNTY, UTAH
OCTOBER, 2014



Vicinity Map
NOT TO SCALE



Construction Activity Schedule	
- PROJECT LOCATION.....	LIBERTY CITY, WEBER COUNTY, UT
- PROJECT BEGINNING DATE.....	OCTOBER 2014
- BMP'S DEPLOYMENT DATE.....	OCTOBER 2014
- STORM WATER MANAGEMENT CONTACT / INSPECTOR.....	TRAVIS ARGYLE (801) 644-0277
- SPECIFIC CONSTRUCTION SCHEDULE INCLUDING BMP CONSTRUCTION SCHEDULE TO BE INCLUDED WITH SWPPP BY OWNER/DEVELOPER	

Reeve & Associates, Inc.

IRA

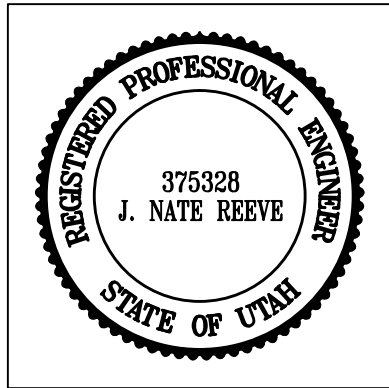
920 CHAMBERS STREET, SUITE 14, OGDEN, UTAH 84403
TEL: (801) 621-3100 FAX: (801) 621-2666 www.reeve-assoc.com
LAND PLANNERS • CIVIL ENGINEERS • LAND SURVEYORS
TRAFFIC ENGINEERS • STRUCTURAL ENGINEERS • LANDSCAPE ARCHITECTS

REVISIONS	DESCRIPTION
DATE	

Keith & Lanete Nelson

LIBERTY CITY, WEBER COUNTY, UTAH

Storm Water Pollution Prevention Plan Exhibit



Project Info.	
Engineer:	J. NATE REEVE, P.E.
Drafter:	S. TAGGART
Begin Date:	OCTOBER 7, 2014
Name:	KEITH & LANETE NELSON
	4604 N. 3150 E.
	LIBERTY, UTAH
Number:	5663-44

Sheet	2
1	Sheets