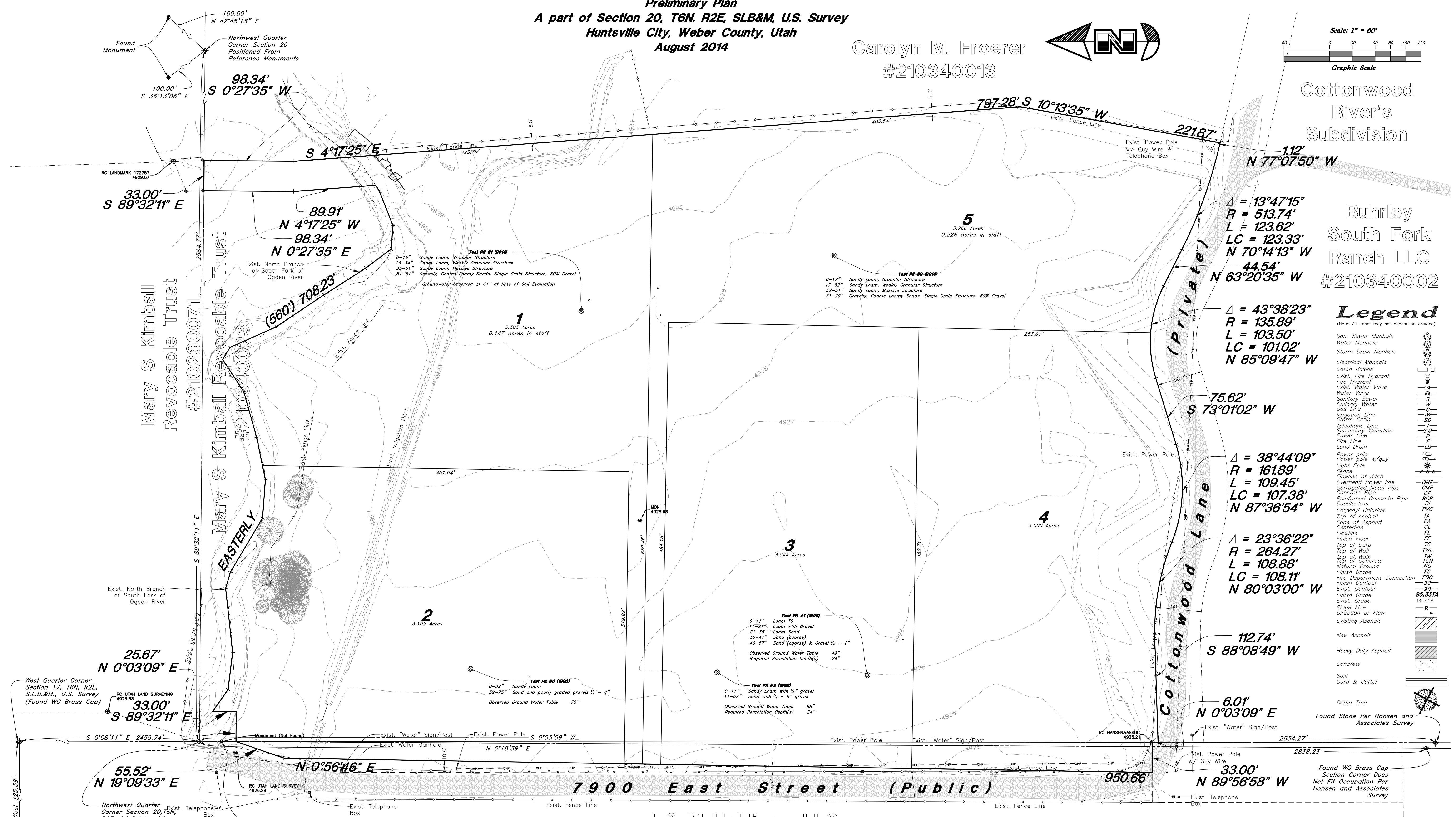
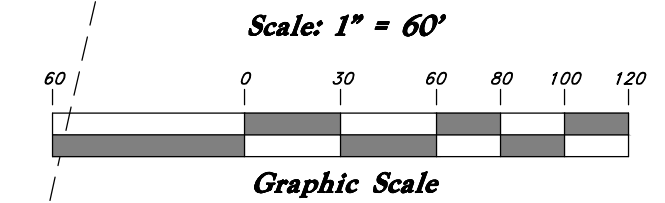
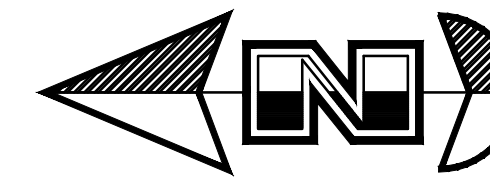


# Satterthwaite Southfork Estates

Preliminary Plan  
A part of Section 20, T6N, R2E, SLB&M, U.S. Survey  
Huntsville City, Weber County, Utah  
August 2014

Carolyn M. Froerer  
#210340013



Cottonwood River's Subdivision

Buhrley South Fork Ranch LLC  
#210340002

### Legend

- (Note: All items may not appear on drawing)
- San. Sewer Manhole
  - Water Manhole
  - Storm Drain Manhole
  - Electrical Manhole
  - Catch Basins
  - Exist. Fire Hydrant
  - Fire Hydrant
  - Exist. Water Valve
  - Water Valve
  - Sanitary Sewer
  - Culinary Water
  - Gas Line
  - Irrigation Line
  - Storm Drain
  - Telephone Line
  - Secondary Waterline
  - Power Line
  - Fire Line
  - Land Drain
  - Power pole
  - Power pole w/guy
  - Light Pole
  - Fence
  - Flowline of ditch
  - Overhead Power line
  - Corrugated Metal Pipe
  - Concrete Pipe
  - Reinforced Concrete Pipe
  - Ductile Iron
  - Rayway Chloride
  - Top of Asphalt
  - Edge of Asphalt
  - Centerline
  - Flowline
  - Finish Floor
  - Top of Curb
  - Top of Wall
  - Top of Walk
  - Top of Concrete
  - Natural Ground
  - Finish Grade
  - Fire Department Connection
  - Finish Contour
  - Exist. Contour
  - Finish Grade
  - Exist. Grade
  - Ridge Line
  - Direction of Flow
  - Existing Asphalt
  - New Asphalt
  - Heavy Duty Asphalt
  - Concrete
  - Spill Curb & Gutter
  - Demo Tree
  - Found Stone Per Hansen and Associates Survey

$\Delta = 13^{\circ}47'15''$   
 $R = 513.74'$   
 $L = 123.62'$   
 $LC = 123.33'$   
 $N 70^{\circ}14'13'' W$   
 $44.54'$   
 $N 63^{\circ}20'35'' W$

$\Delta = 43^{\circ}38'23''$   
 $R = 135.89'$   
 $L = 103.50'$   
 $LC = 101.02'$   
 $N 85^{\circ}09'47'' W$

$\Delta = 38^{\circ}44'09''$   
 $R = 161.89'$   
 $L = 109.45'$   
 $LC = 107.38'$   
 $N 87^{\circ}36'54'' W$

$\Delta = 23^{\circ}36'22''$   
 $R = 264.27'$   
 $L = 108.88'$   
 $LC = 108.11'$   
 $N 80^{\circ}03'00'' W$

$112.74'$   
 $S 88^{\circ}08'49'' W$

$6.01'$   
 $N 0^{\circ}03'09'' E$

1. Show Scale
2. Give boundary description with bearings and distances
3. Show width of 7900 East Street

J & M Holdings, LLC  
#210300004

**BOUNDARY DESCRIPTION**  
Part of the Northwest Quarter of Section 20, Township 6 North, Range 2 East, Salt Lake Meridian, U.S. Survey:  
Beginning 40 feet South of the Northwest Corner of Section 20, thence East to the centerline of the North branch of the South fork of the Ogden River, thence Easterly along said centerline 560 feet, more or less, thence North 4d45' West 20 feet, thence North 1.49 chains to section line, thence East 33 feet, thence South 1.49 chains, thence south 4d45' East 12.08 chains, thence South 9d46' West 246 feet to the North line of Cottonwood Lane, thence Westerly along the North line of road to the West line of said quarter section, thence North 1003 feet to beginning. Also part of the Northeast Quarter Section 19, Township 6 North, Range 2 East, Salt Lake Meridian, U.S. Survey:  
Beginning 40 feet South of the Northeast corner of said quarter section, thence South 18d West 55.42 feet, thence South 0'14'29" East parallel to section line 943.20 feet, thence North 89d12' East 33 feet to section line, thence North 0'14'29" West 1003 feet along line to beginning.

ENGINEER:  
Great Basin Engineering North  
c/o Andy Hubbard  
5746 South 1475 East Suite 200 Ogden, Utah 84405  
(801) 394-4515

DEVELOPER:  
Dale Satterthwaite  
1405 North 7425 East  
Huntsville, Utah 84317  
(801) 430-0455

GREAT BASIN ENGINEERING  
5746 SOUTH 1475 EAST, OGDEN, UTAH 84403  
MAIN (801) 394-4515, S.L.C. (801) 521-0222, FAX (801) 392-7544  
WWW.GREATBASINENGINEERING.COM

Preliminary Plan  
Satterthwaite Southfork Estates  
950 South 7900 East Huntsville, Weber County, Utah  
A part of Section 20, T6N, R2E, SLB&M, U.S. Survey

17 Dec, 2012

SHEET NO.

C1

12N913